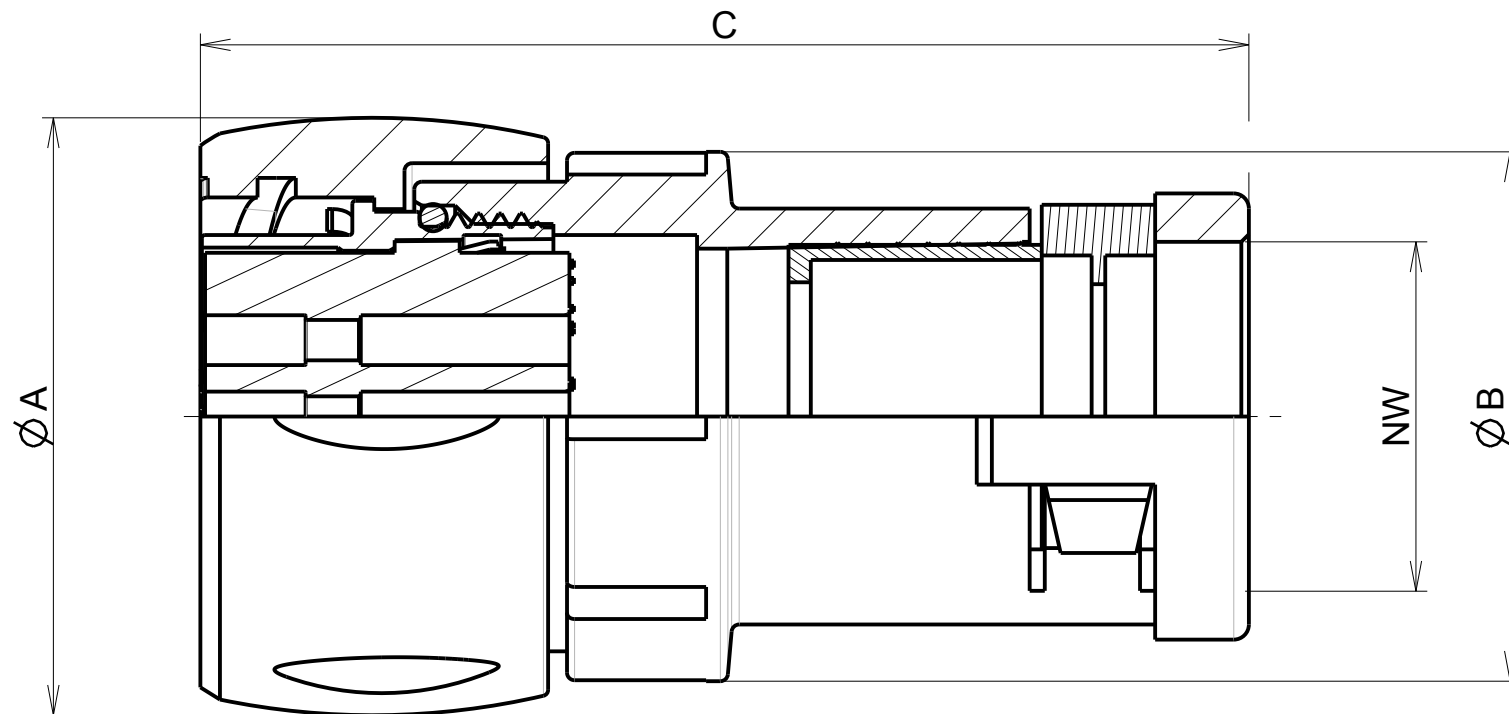
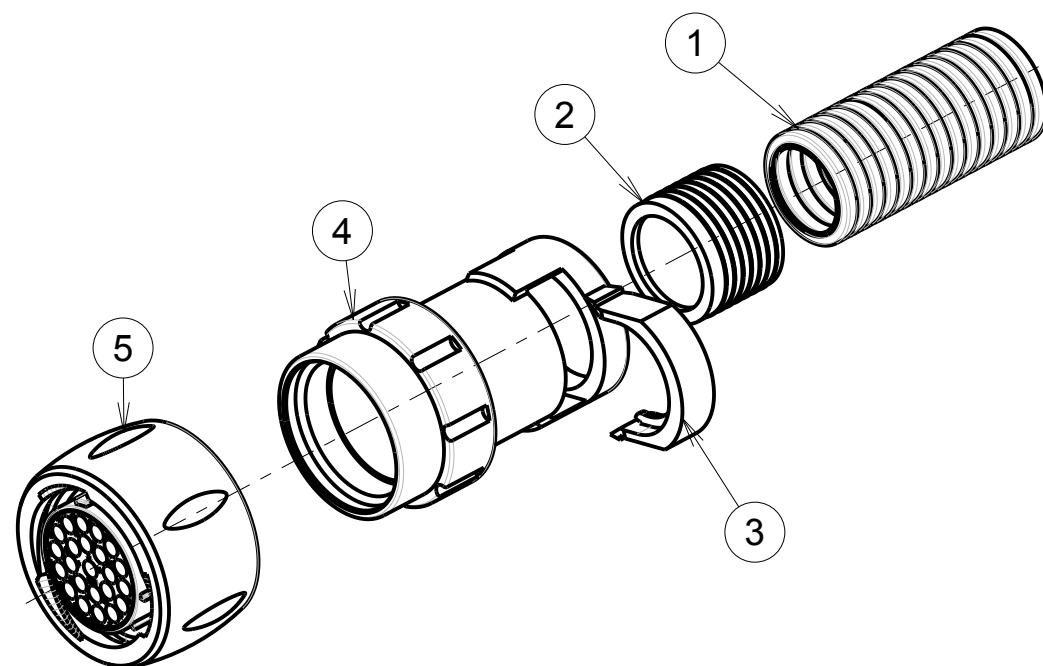


b ; 0 ; RL



ASSEMBLED VIEW

P/N	CONNECTOR SIZE	FLEX SIZE CONDUIT (see note 5)	Ø A Maxi	Ø B ±0.3	C ± 0.6
UTS6FC12XXP/S	12	NW12	30.15	24	61
UTS6FC14XXS	14	NW12	35.1	26.5	61
UTS6FC18XXS	18	NW17	42	35	69.2



MATERIAL :

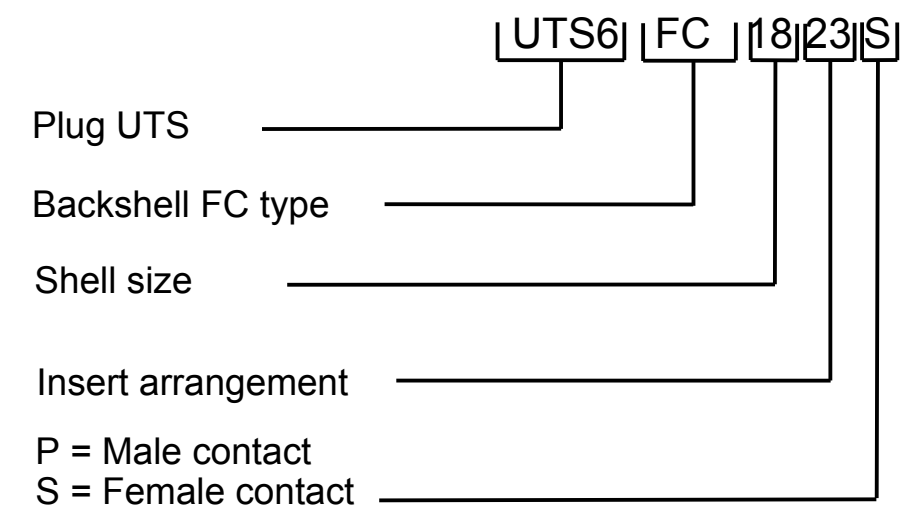
- ④ Backshell body :Polyamid
- ② Seal : Elastomer
- ③ Retaining clip : Polyamid
- ⑤ Coupling Nut:Polyamid
- Insert:Polyamid
- Shell : Polyamid
- Coupling spring : stainless steal
- O'seal : NBR

PERFORMANCE CHARACTERISTICS :

Operating temperature:-40°C up to 105°C  
Corrosion salt spray:500 hours  
Sealing in assembly conditions: (with an UTS connector)  
-IP68 compliant ; 1 bars/30 min  
-IP69K as per DIN40050  
Insulation resistance: 5000 M min  
Test potential : 2000Vrms for #16 layout  
Durability: 250 matings and unmatings  
Flammability: Polyamid material classified UL94 V-0

NOTES :

- 1-Contact to be ordered separately :refer to UTS catalog
- 2-Insert arrangements refer to BT 297 see drawing for information: C142-UTS1-A
- For male plug, only layout size 12
- 3-Polarization of connector: refer to :  
-UT0-POLARIZATION-C01  
-UT0W-POLARIZATION-C01
- 4-Delivered as a kit in a plastic bag (individual): with parts 2, 3, 4 and 5
- 5-Recommended flexible conduit :PMAFLEX
- 6-For assembly instruction, see BT297



P/N : UTS6FC12\*\*P  
UTS6FC\*\*\*\*S

b	07/06/13	—	Modification notes	22523A
ISS	DATE	Latest modification - by:	J.FEURPRIER	MOD N°
Designed by:	J.FEURPRIER	Date:	02/04/13	CUSTOMER DRAWING
TITLE	ASSEMBLY BACKSHELL AND UTS PLUG CONNECTOR UTS CONNECTOR			
Scale	1/2	General linear Tolerances: ± 0.2	NPRDS / PROJECT IC124509A	
SOURIAU		WWW.SOURIAU.COM		This document is the property of SOURIAU It must not be reproduced or communicated without permission
FORMAT	A3	SOURIAU DRG N° C186-UTS1-A		
NOT EXPORT CONTROLLED				1/1

# Mouser Electronics

Authorized Distributor

Click to View Pricing, Inventory, Delivery & Lifecycle Information:

Souriau:

[UTS6FC128S](#) [UTS6FC128P](#) [UTS6FC1210P](#) [UTS6FC1412S](#) [UTS6FC1210S](#) [UTS6FC1823S](#) [UTS6FC124P](#)  
[UTS6FC124S](#) [UTS6FC1832S](#) [UTS6FC1419S](#) [UTS6FC142G1S](#) [UTS6FC147S](#) [UTS6FC128PW](#)