

SHELL SIZE	A $\pm 0.25$	B $\pm 0.25$	C Maxi	D $\pm 0.15$	$\varnothing E \pm 0.15$	F Maxi	G $\pm 0.25$	H $\pm 0.10$	Thread
8	21.00	15.10	21.50	2.30	11.90	11.70	15.10	12.50	7/16 28 UNEF Class 2A
10	23.80	18.30	21.50	2.30	14.90	11.70	18.30	15.10	9/16 24 UNEF Class 2A
12	26.20	20.60	21.50	2.30	18.95	11.70	20.60	18.20	11/16 24 UNEF Class 2A
14	28.60	23.00	21.50	2.30	22.15	11.70	23.00	21.40	13/16 20 UNEF Class 2A

## MATERIAL :

Shell:PBT UL94 V-0 Black color  
Insert:Polychloroprene  
Seal gasket :Sealing IP68/69K : Silicone  
O'seal : Nitril  
Contact: brass + gold plated

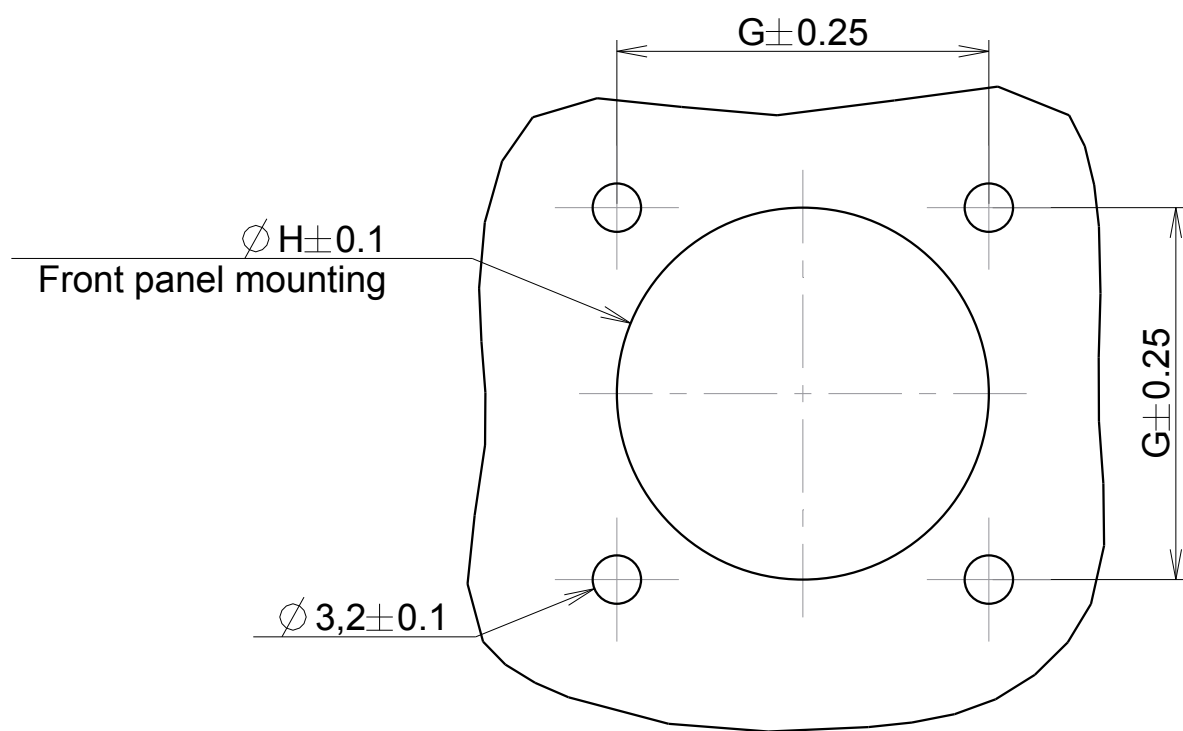
## PERFORMANCE CHARACTERISTICS :

Operating temperature:-40° C up to 105° C  
Insulation resistance:5000 M $\Omega$  min  
Test potential:1500Vrms for #20 layout  
Corrosion salt spray:500 hours  
Durability:250 matings and unmatings  
Sealing in mated and unmated conditions:  
-IP68 1 bar during 1 week : immersion under 10 m of water.  
(IEC 60529)  
-IP69K : exposure to high pressure water of cleaning  
equipement(DIN 40050)

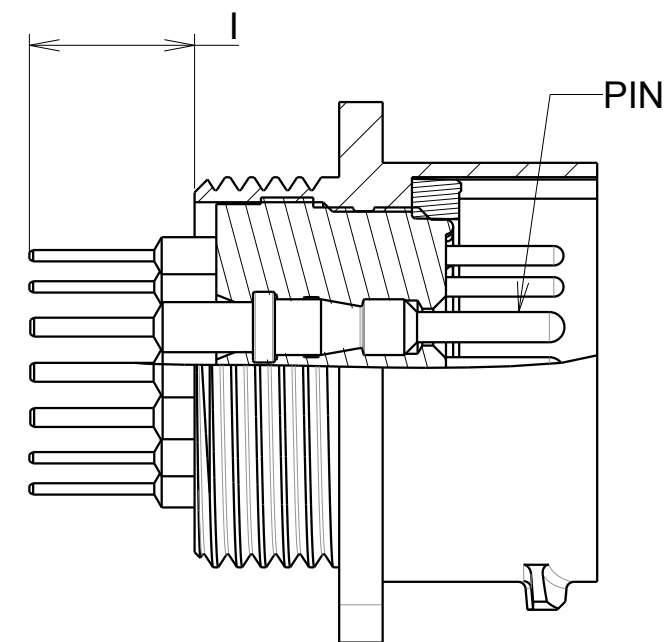
## NOTE:

Insert arrangements : refer to C144-UTS1-A

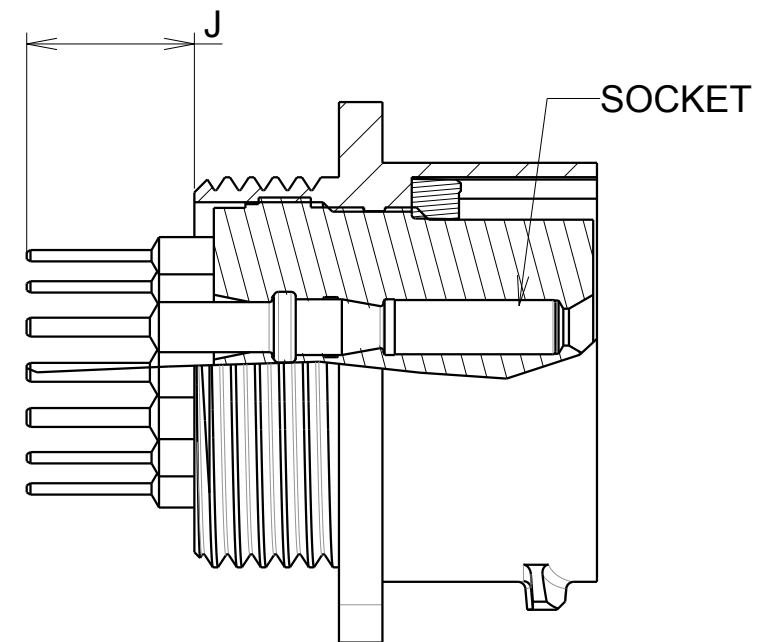
## CUT PANEL



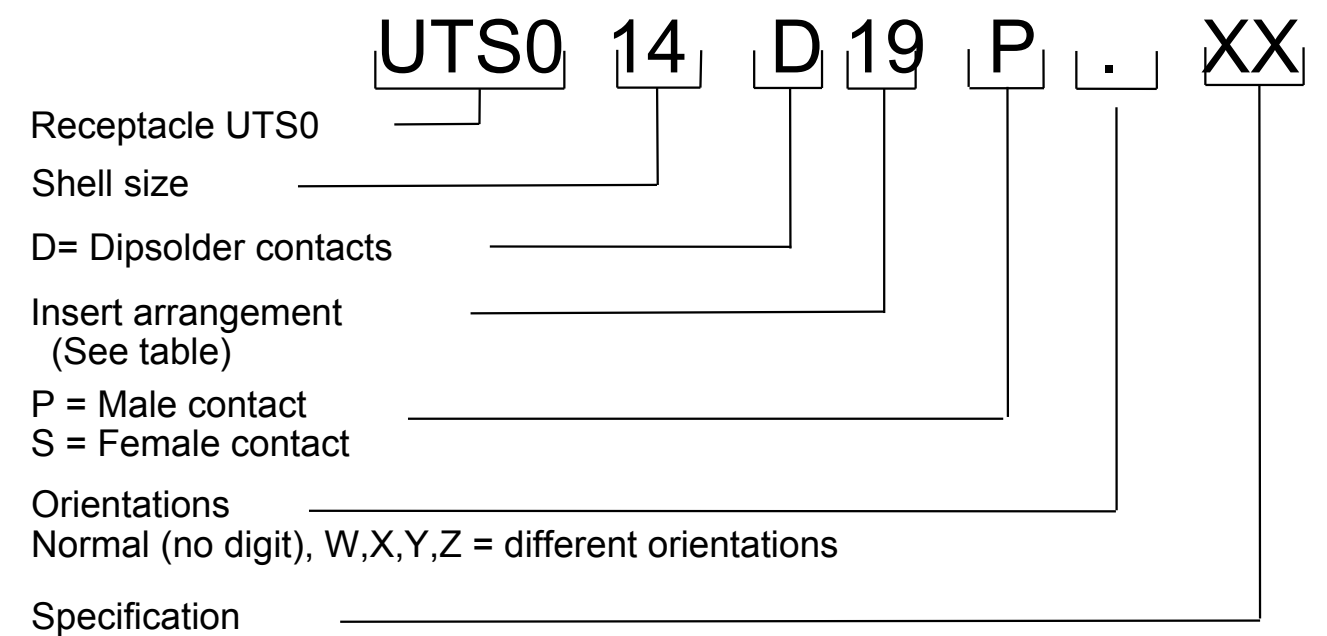
## MALE CONNECTOR



## FEMALE CONNECTOR



Shell size	I (male connector)	J (female connector)
8	9.76/11.86 for layout 8-2/8-3/8-4 10.78/13.09 for layout 8-3A/8-98/8-33	9.55/11.71 for layout 8-2/8-3/8-4 10.82/12.79 for layout 8-3A/8-98/8-33
10	8.1/10.5	8.15/10.15
12	8.1/10.5 7.2/9.3 for layout 12-14	8.15/10.15 7.3/9.3 for layout 12-14
14	8.1/10.5	8.15/10.15



Country	Jurisdiction & Control List
FR	NOT LISTED

P/N : SEE TABLE

B	02/11/2017	Updating shell material	21774A
ISS	DATE	Latest modification - by: COURTOIS L.	MOD N°
Designed by: J. FEURPRIER Date: 11/05/11 CUSTOMER DRAWING			
TITLE		RECEPTACLE WITH DIPSOLDER CONTACTS UTS HI SEAL	
Scale		General linear Tolerances: $\pm 0.1$	NPRDS / PROJECT UTS
SOURIAU		WWW.SOURIAU.COM	
FORMAT		SOURIAU DRG N° C143-UTS1-A	
A2		SHEET 1 / 1	

# Mouser Electronics

Authorized Distributor

Click to View Pricing, Inventory, Delivery & Lifecycle Information:

## Souriau:

[UTS014D7P](#) [UTS014D7S](#) [UTS010D6P](#) [UTS010D6S](#) [UTS012D10P](#) [UTS012D10S](#) [UTS014D19P](#) [UTS014D19S](#)  
[UTS08D4P](#) [UTS08D4S](#) [UTS010D7P](#) [UTS010D7S](#) [UTS012D14P](#) [UTS012D14S](#) [UTS012D2P](#) [UTS012D2S](#)  
[UTS012D3P](#) [UTS012D3S](#) [UTS012D4P](#) [UTS012D4S](#) [UTS012D8P](#) [UTS012D8S](#) [UTS014D12P](#) [UTS014D12S](#)  
[UTS014D15P](#) [UTS014D15S](#) [UTS014D18P](#) [UTS014D18S](#) [UTS014D5P](#) [UTS014D5S](#) [UTS08D2P](#) [UTS08D2S](#)  
[UTS08D33P](#) [UTS08D33S](#) [UTS08D3P](#) [UTS08D3S](#) [UTS08D98P](#) [UTS014D19PX](#) [UTS08D98S](#) [UTS010D98P](#)  
[UTS010D98S](#) [UTS014D19SX](#) [UTS010D6SW](#) [UTS012D10SW](#) [UTS012D10SX](#) [UTS08D3AP](#) [UTS08D3AS](#)  
[UTS08D3SW](#) [UTS018D32P](#) [UTS018D32S](#)