

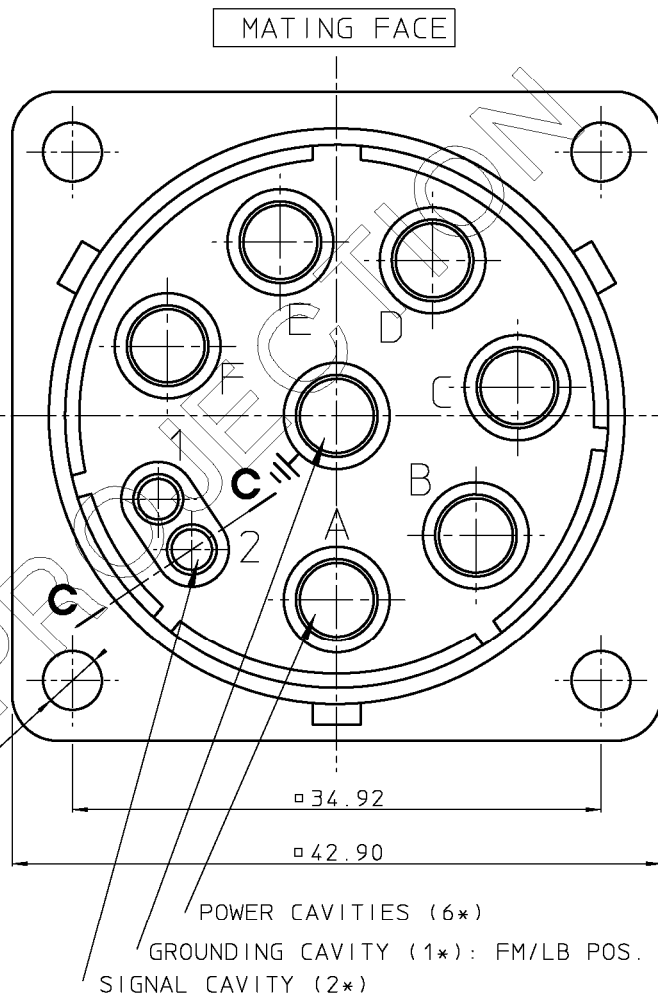
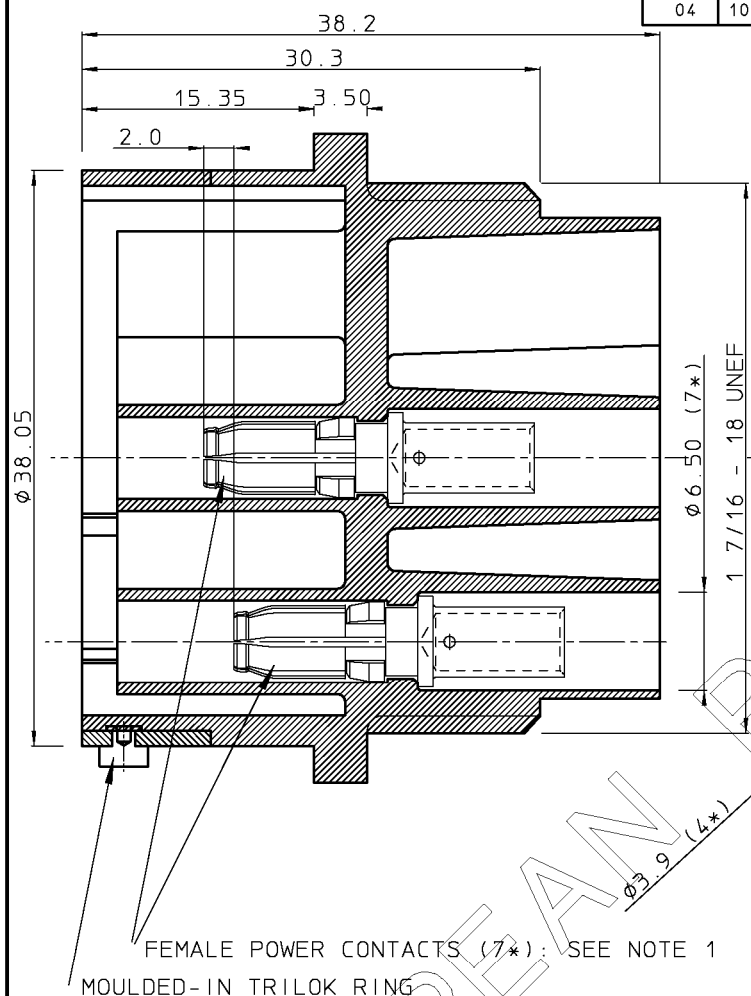
DIT IS ONZE EIGENDOM EN MAG NOCH NAGEMAAKT, HERDRUKT, OVERGEMAAKT AAN DERDEN, NOCH VOOR FABRIKATIE GEBRUIKT WORDEN, ZONDER ONZE SCHRIFTELIJKE TOELATING. BIJ NIET GEBRUIK IS DE TERUGZENDING VERPLICHT.

THIS IS OUR EXCLUSIVE PROPERTY. IT IS NOT TO BE COPIED, REPRINTED OR DISCLOSED TO A THIRD PARTY, NOR USED FOR MANUFACTURING WITHOUT OUR WRITTEN CONSENT, AND HAS TO BE RETURNED TO US IN CASE OF NO USAGE

04

BS,A , 201178,002

REV.	DATE	DESCRIPTION	BY	C'K'D'
01	6-2-91	BEC 9.3036: DIM 30.3 WAS 38.2	M B	
02	03-09-92	CAV. DIA. ENLARGED	Y.D.	
03	10-03-99	CONVERSION ME10	K.N.	
04	10-03-99	TEMPERATURE RANGE -55C INSTEAD OF -25C	K.N.	



PERFORMANCE CHARACTERISTICS

- OPERATING TEMPERATURE : -55 °C TO +125 °C.
- INSULATION RESISTANCE : 5000 MΩ MIN.
- TEST POTENTIAL : 2000 V EFF.
- CONNECTOR AS PER VDE 0110 GROUPE 660V

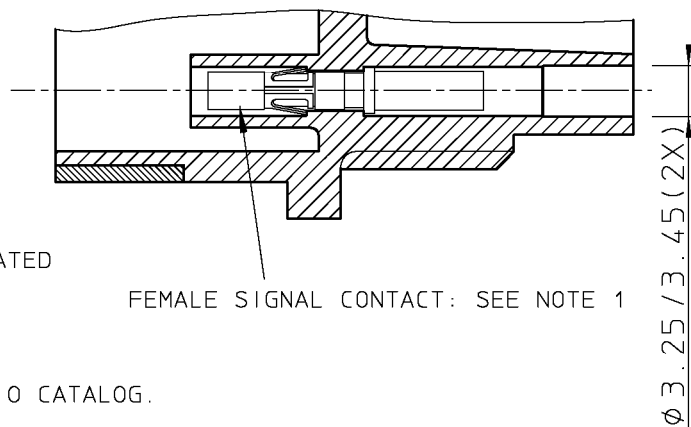
MATERIAL

- BODY : GLASS-FILLED POLYESTER UL94-V0.
COLOUR : BLACK.
- TRILOK RING: HIGH STRENGTH CUZN ALLOY, NI PLATED


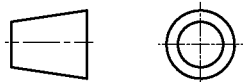
NOTES

1. CONTACTS TO BE ORDERED SEPARATELY
2. FOR ADDITIONAL INFORMATION REFER TO TRIM-TRIO CATALOG.
3. CONNECTOR TO BE MATED WITH UTG6247PN

FEMALE SIGNAL CONTACT: SEE NOTE 1



GEN. ST.	01		02		03		04		05		06		07		08		0D		50		60		70		80		90				
INT. ST.	10	11	12	13	14	18	20	31	32	33	34	38	39	40	42	43	44	45	46	48	56	70	72	73	75	76	81	82	83	84	88

1DEC ±0,2 1DEC 2DEC ±0,1 2DEC ANGLES ±1° HOEKEN	APPR.	DATE	SIGN.	FEMALE RECEPTACLE	
WE RESERVE THE RIGHT TO CHANGE DIMENSIONS OR REQUIREMENTS WITHOUT PRIOR NOTICE.	DRAFT	26-9-90	M BUEDS	CAT. No. UTG0247S	
	CHECKED			<div> SOURIAU Connection Technology</div> <div>SOURIAU Route Nationale 23 72470 CHAMPAGNE</div>	
	PROD. MGR.				
ALL DIMENSIONS IN MM 	PR.ENG. MGR.			SCALE	
	PR. MGT. MGR.			Route Nationale 23 72470 CHAMPAGNE	
ALLE AFMETINGEN IN MM	REFERENCES / REFERENTIES			BS , A , 201178,002 04	
				NOT EXPORT CONTROLLED	
				DRAWING NR.	CUSTOMER DRAWING
				REVISION	

Mouser Electronics

Authorized Distributor

Click to View Pricing, Inventory, Delivery & Lifecycle Information:

Souriau:

[UTG0247S](#) [UTG0247SH](#)