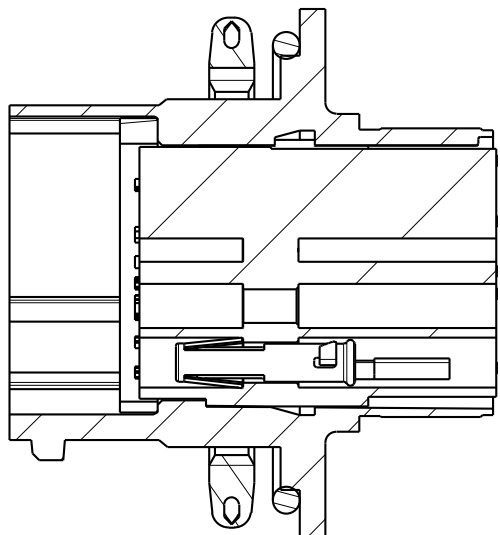
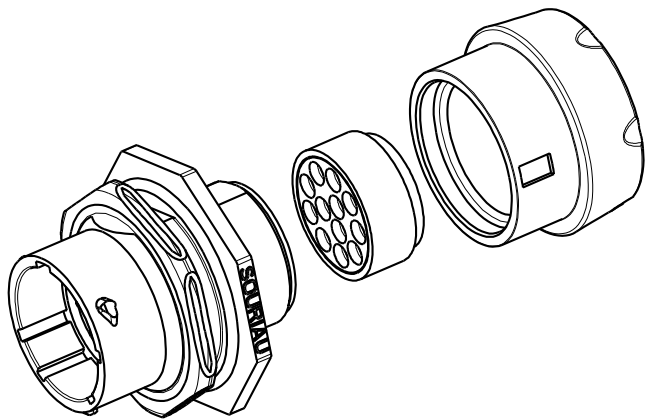


SHELL SIZE	LAYOUT	THREAD I	$\phi A \pm 0.15$	$B \pm 0.2$	C MIN.	D MAX.	$E \pm 0.25$	$F \pm 0.3$	$G \pm 0.20$	$\phi H \pm 0.2$	$\phi J \pm 0.2$
14	See note 4	1"20 UNEF CLASS 2A	22.20	19.30	43	3.20	34.90	30.20	24.30	25.70	29.75
12	See note 4	7/8 20 UNEF CLASS 2A	19	19.3	40.75	3.20	31.80	27.00	21.20	22.50	25.5
10	See note 4	11/16 24 UNEF CLASS 2A	14.9	19.3	41	3.20	27.00	22.2	16.5	17.70	22

MALE CONNECTOR
(detail 1)



COUPE A-A



MATERIAL :

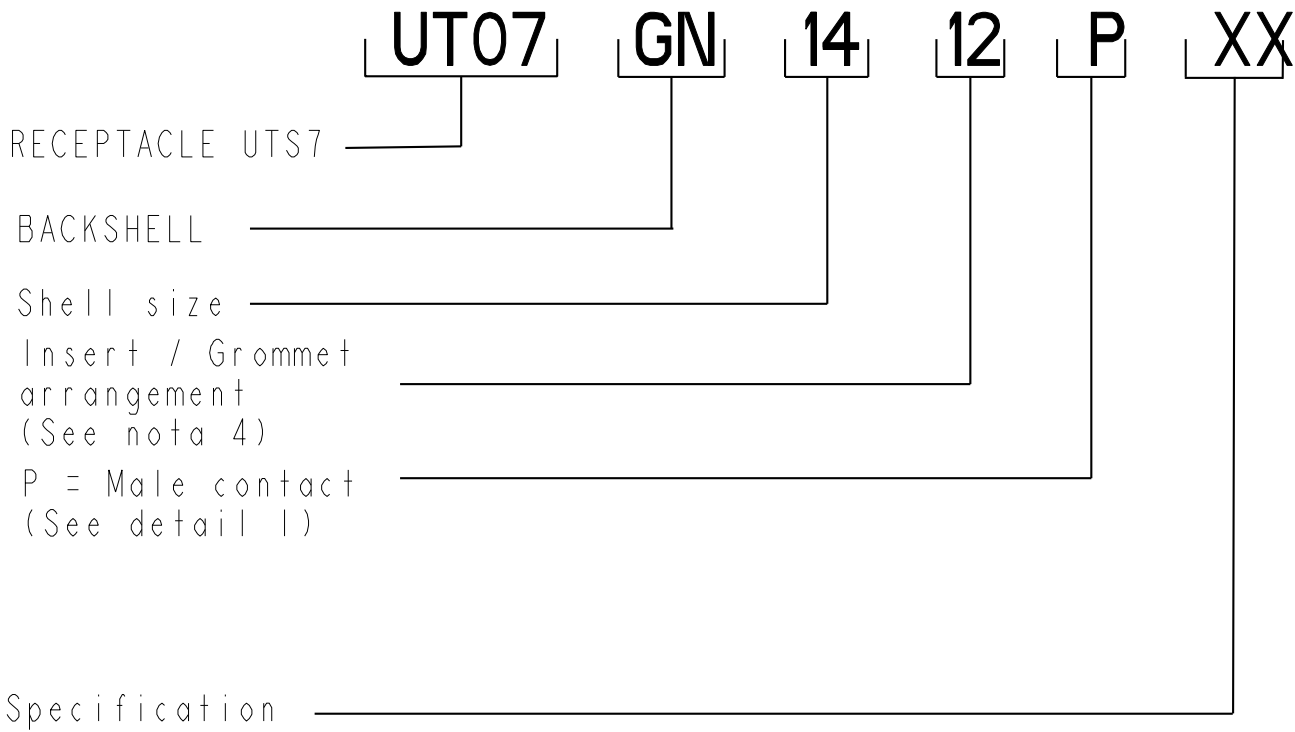
Shell:Aluminium alloy
Insert:Polyamid UL94 V-0
Seal gasket : Sealing IP68/69K : Silicone
O'ring:nitril
Nut:Aluminium alloy
Backshell body :Aluminium alloy
O'seal : Nitril

PERFORMANCE CHARACTERISTICS :

Operating temperature:-40°C up to 105°C
Insulation resistance:5000 M Ω min
Test potential:2000 Vrms for #16 layout and 1500Vrms for #20 layout
Corrosion salt spray:500 hours
Durability:250 matings and unmatings
Sealing in mated conditions:
-IP68 1 bar during 1 week : immersion under 10 m of water.
(IEC 60529)
-IP69K : exposure to high pressure water of cleaning
equipement(DIN 40050)

NOTES :

- 1-Receptacle, backshell and the reducing seal are delivered as a kit
The backshell already includes the standard seal.
- 2-Contact to be ordered separately :refer to TRIM TRIO catalog
- 3-Colored ring to be orderd separately refer to customer drawing
C006-UTSI-A
- 4-developed Grommet arrangements : refer to C042-UTSI-A



CUSTOMER DRAWING

a	07/02/08	--	--
ISS	DATE	Latest modification - by:	MOD N°
Designed by:	RAGAINEM.	Date: 31/05/07	CUSTOMER DRAWING
TITLE	JAM NUT RECEPTACLE + BACKSHELL NUT UTS CONNECTOR		
Scale	2/1	General linear Tolerances: ± 0.1	NPRDS / PROJECT UTSI
FORMAT	A2	SOURIAU DRG N° UT07GNXXXXP-C	SHEET
NOT EXPORT CONTROLLED			

Mouser Electronics

Authorized Distributor

Click to View Pricing, Inventory, Delivery & Lifecycle Information:

Souriau:

UT07GN147PH6