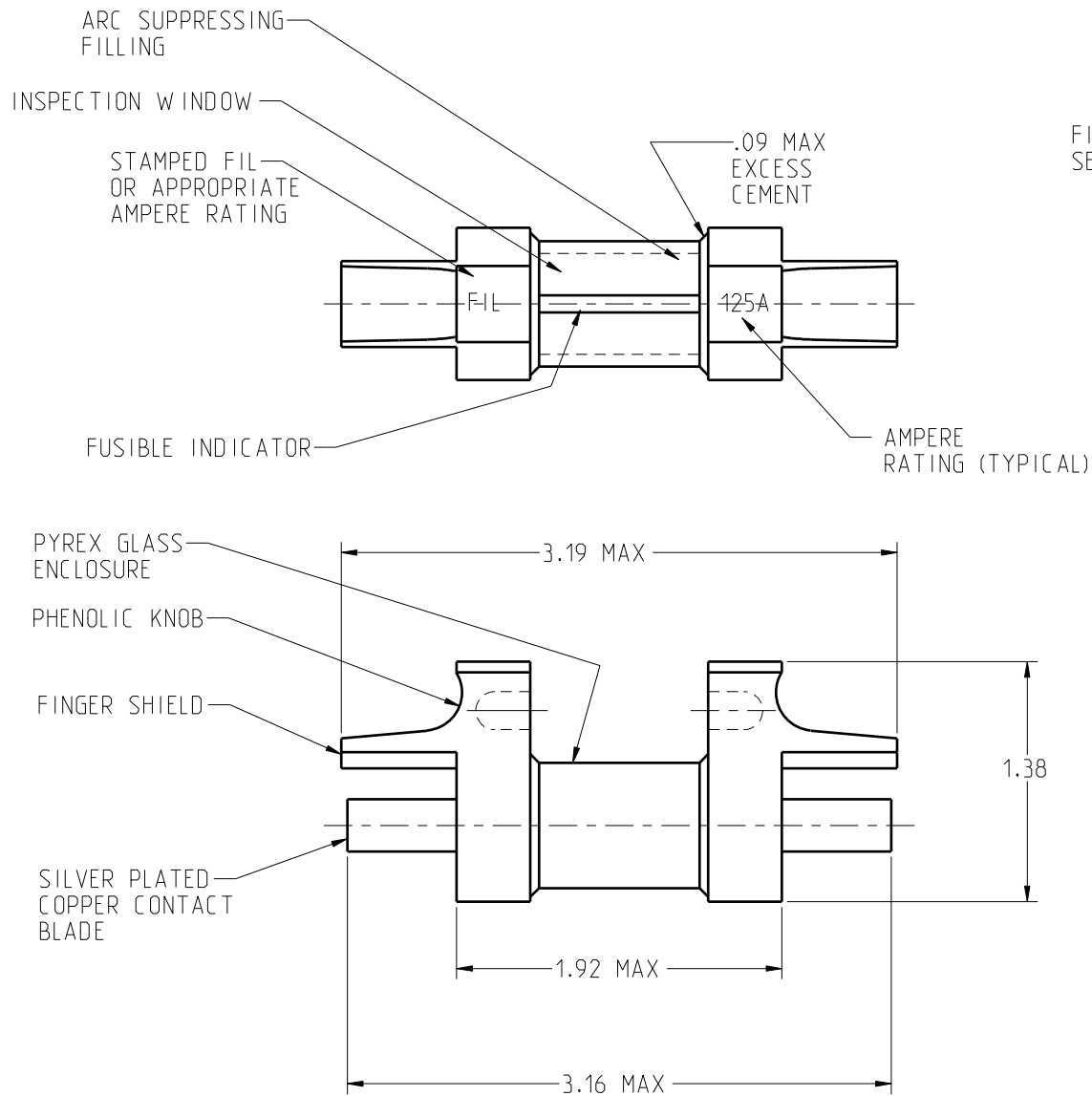


THIS DRAWING IS A CONTROLLED DOCUMENT FOR SOURIAU USA, INC.
IT IS SUBJECT TO CHANGE WITHOUT NOTIFICATION.
CONTACT THE DOCUMENT CONTROL CENTER FOR THE LATEST REVISION.

THE INFORMATION CONTAINED IN THIS DRAWING IS CONFIDENTIAL AND MAY NOT BE
DISCLOSED WITHOUT WRITTEN CONSENT FROM SOURIAU USA, INC.

DWG. NO.
SA20635

AMPERE RATING	CATALOG NUMBER
80	FIL80
100	FIL100
125	FIL125



APPLICATION:

120/208 VOLT 400 CYCLE
ALTERNATING CURRENT


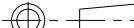
REFERENCES:

LIMITER BASE F3H3 - SC20636
LIMITER ASS'Y - FC21634

MATERIAL:

AS NOTED.

K	REVISED PER ECN 10894	RKD 07-07-09	SDH 07-07-09
J	REVISED PER ECN10186	GRB 03-06-07	FLR 03-06-07
8	ADDED CORE HOLE PER ECW 1410	SE 8-12-83	CEB 8-12-83
7	DWG REACTIVATED SEE REV. REF PRINT ECC3817	LH 12-15-79	PP 12-15-79
6	OBSOLETE PER ECC3484	LH 1-24-78	SFP 1-24-78
5	REDRAWN WITHOUT CHANGE	BB 11-14-60	CRS 11-14-60
REV	DESCRIPTION	BY DATE	CHKD DATE

LINEAR MEASURE:			INCH [mm]
THIRD ANGLE PROJECTION			
			
TOLERANCES UNLESS OTHERWISE SPECIFIED			
No. OF PLACES	INCH [mm]		
ONE PLACE	±.1 [±3]		
TWO PLACES	±0.02 [±.5]		
THREE PLACES	±0.010 [±.25]		
ANGLES ±1°			

DRAWING TITLE			
LIMITER AIRCRAFT FUSE			
CAT NO.			
FILL --- (SEE TABLE)			
CAGE NO: 09922		SIZE: B	
CUSTOMER		 www.souriau.com	APPROVAL
			DRAWN: GRB 03-06-07 CHKD : FLR 03-06-07 DSGN : GRB 03-06-07 MFG : DW/H 03-06-07 QC : DK 03-06-07
INTERPRET THIS DRAWING IN ACCORDANCE WITH ASME Y14.5M - 1994.			DRAWING SCALE: 1:1
			DRAWING NO. REV
		SA20635 K	
		1 OF 1	

PRO-E

Mouser Electronics

Authorized Distributor

Click to View Pricing, Inventory, Delivery & Lifecycle Information:

Souriau:

[FIL100](#) [FIL125](#)