

THIS IS OUR EXCLUSIVE PROPERTY. IT IS NOT TO BE COPIED, REPRINTED OR DISCLOSED TO A THIRD PARTY, NOR USED FOR MANUFACTURING WITHOUT OUR WRITTEN CONSENT, AND HAS TO BE RETURNED TO US IN CASE OF NO USAGE

Technical drawing of a mechanical part, showing two views: a top view and a side view.

Top View Dimensions:

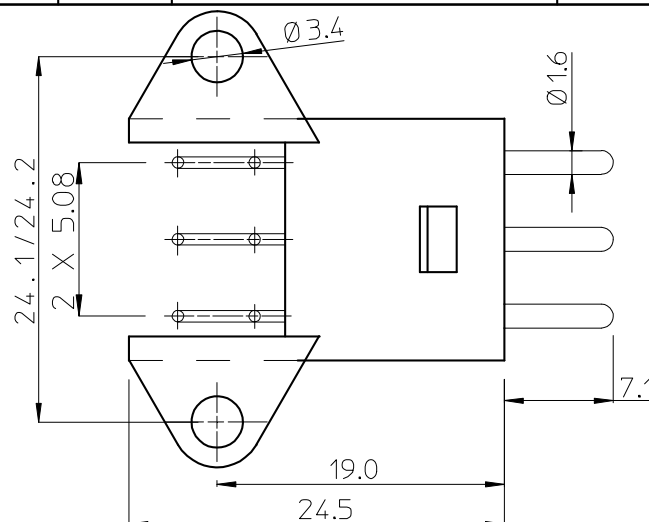
- Overall width: 30.2
- Overall height: 16.0
- Central hole diameter: $\varnothing 0.8$
- Top surface width: 4.0
- Top surface height: 5.08
- Dimension: $5.0^{+0.50}_0$

Side View Dimensions:

- Overall height: 16.5
- Top surface width: 5.08

Top View Features:


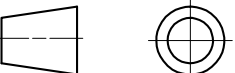
- Six circular features labeled 1 through 6, arranged in a 3x2 grid.
- Two vertical slots on the left side, each containing a cross-hatched feature.
- Two vertical slots on the right side, each containing a cross-hatched feature.



HOUSING : GLASS FILLED POLYESTER UL94-V0, BLACK
CONTACTS : BRASS, GOLD OR TIN PLATED.

| | | | |
|-------------------------|-------------------|----------------------|---------------|
| - OPERATING TEMPERATURE | : -55°C TO 125°C. | - CURRENT RATING | : 5 A. |
| - INSULATING RESISTANCE | : 5000 MΩ MIN. | - CONTACT RESISTANCE | : 6 mΩ MAX. |
| - TEST POTENTIAL | : 2000 VAC | - DURABILITY | : 500 CYCLES. |

1. CONNECTOR SUPPLIED FULLY LOADED WITH MACHINED PIN CONTACTS.
SMS6GE61M0 = 26 Ni MIN. ON CONTACT SIDE, 2.36 Au MAX. ALL OVER.
SMS6GE61M9 = 26 Ni MIN. AND 2.36 Au MAX. ON CONTACT SIDE, 5 μ SnAgCu MIN.
ON TERM. SIDE.
2. MATING PARTS : SMS6P1 (WITHOUT CABLE HOOD)
SMS6PDH1 (WITH INTEGRATED CABLE HOOD)
3. DRILLING HOLE PATTERN : SEE DRAWING BS.C ,201713,000
4. CONNECTOR MUST BE MOUNTED ON THE EDGE OF THE PRINTED CIRCUIT BOARD.

| | | | | |
|---|--|-------------------------|------------------------------|---|
| 1DEC ±0,2 1DEC 2DEC ±0,1 2DEC ANGLES ±1° HOEKEN | APPR. DRAFT CHECKED PROD. MGR. PR.ENG.MGR. PR.MGT.MGR. | DATE 03-04-98 | SIGN. S.Van Dessel | SMS QIKMATE RIGHT ANGLE MALE REC. 6 MACH. CONT. CAT. No. SMS6GE61M* |
| WE RESERVE THE RIGHT TO CHANGE DIMENSIONS OR REQUIREMENTS WITHOUT PRIOR NOTICE. | REFERENCES / REFERENTIES | | | <div>  <div> SOURIAU Connection Technology </div> </div> <div> SOURIAU Route Nationale 23 72470 CHAMPAGNE </div> |
| ALL DIMENSIONS IN MM  ALLE AFMETINGEN IN MM | BS, A , 2021051003, 04 DRAWING NR. CUSTOMER DRAWING | | | SCALE 2 : 1 |

Mouser Electronics

Authorized Distributor

Click to View Pricing, Inventory, Delivery & Lifecycle Information:

Souriau:

[SMS6GE61M9](#)