

Keying Shown as example

-Standard : Based on MIL-DTL-38999 Series III	
-Shell Material	: Aluminium
-Shell Plating	: Olive drab Cadmium
-Insulator	: Thermoplastic
-Contacts	: Copper Alloy
-Seals & Grommet	: Silicon Elastomer
-Contact Plating	: Gold over copper Alloy 0.8µm minimum
-Durability	: 500 Mating cycles
-Delivered with Souriau contacts and Accessories	
-Temperature Range	: -65°C to +175°C
-Salt Spray	: 500 hours
-Mass	: 97.56 g ± 10%

Connector dimension	
Dim	Nominal
A	58.7±0.3
B	42.85+0.1/-0.15
R	32.5Max
S	55.6±0.4
W	3+0.9/-0.1
VV THREAD	M37x1-6g

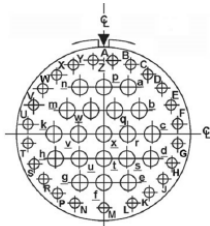
SOURIAU shall not be liable for any non-conformity or damage due to a use of the Products which does not comply with the Specifications issued by either of the Parties or by a third party (professional recommendation, technical notice.)

Country	Jurisdiction & Control List
FR	Not Listed

PN: 8D725W43SB

A	05-10-2016	First Release	
ISS	DATE	Latest modification - by	MOD N
Designed By:		Date:	<b>CUSTOMER DRAWING</b>
<b>TITLE</b>		Aluminium Receptacle 8D series	
SCALE		General linear Tolerances: $\pm--$	NPRDS / PROJECT  <b>859</b>
NA			
<b>SOURIAU</b>	<b>WWW.SOURIAU.COM</b>		This document is the property of SOURIAU it must not be reproduced or communicated without permission
FORMAT	<b>SOURIAU DRG N° 8D725W43SB-C</b>		SHEET  1/2
<b>A3</b>			

Contact Layout

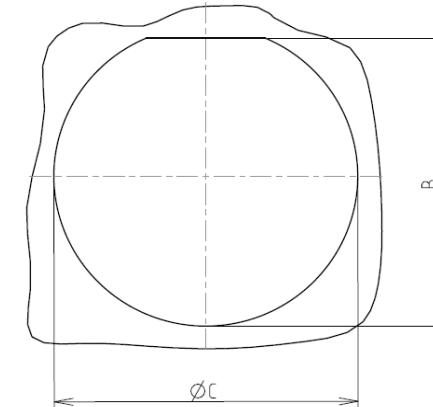


Contacts (Insert arrangement 25-43)					
Contact position ID	Location		Contact position ID	Location	
	X-axis (mm)	Y-axis (mm)		X-axis (mm)	Y-axis (mm)
A	+069 (1.75)	+531 (13.49)	Z	-.069 (1.75)	+531 (13.49)
B	+203 (5.16)	+495 (12.57)	a	+172 (4.37)	+344 (8.74)
C	+324 (8.23)	+425 (10.80)	b	+258 (6.55)	+172 (4.37)
D	+424 (10.77)	+326 (8.28)	c	+344 (8.74)	+000 (0.00)
E	+493 (12.52)	+205 (5.21)	d	+344 (8.74)	-.172 (4.37)
F	+531 (13.49)	+069 (1.75)	e	+172 (4.37)	-.344 (8.74)
G	+531 (13.49)	-.069 (1.75)	f	+000 (0.00)	-.344 (8.74)
H	+493 (12.52)	-.205 (5.21)	g	-.172 (4.37)	-.344 (8.74)
J	+424 (10.77)	-.326 (8.28)	h	-.344 (8.74)	-.172 (4.37)
K	+324 (8.23)	-.425 (10.80)	k	-.344 (8.74)	+000 (0.00)
L	+203 (5.16)	-.495 (12.57)	m	-.258 (6.55)	+172 (4.37)
M	+000 (0.00)	-.531 (13.49)	n	-.172 (4.37)	+344 (8.74)
N	-.203 (5.16)	-.495 (12.57)	p	+000 (0.00)	+344 (8.74)
P	-.324 (8.23)	-.425 (10.80)	q	+086 (2.18)	+172 (4.37)
R	-.424 (10.77)	-.326 (8.28)	r	+172 (4.37)	+000 (0.00)
S	-.493 (12.52)	-.205 (5.21)	s	+172 (4.37)	-.172 (4.37)
T	-.531 (13.49)	-.069 (1.75)	t	+000 (0.00)	-.172 (4.37)
U	-.531 (13.49)	+069 (1.75)	u	-.172 (4.37)	-.172 (4.37)
V	-.493 (12.52)	+205 (5.21)	v	-.172 (4.37)	+000 (0.00)
W	-.424 (10.77)	+326 (8.28)	w	-.086 (2.18)	+172 (4.37)
X	-.324 (8.23)	+425 (10.80)	x	+000 (0.00)	+000 (0.00)
Y	-.203 (5.16)	+495 (12.57)			

Shell size	Arrangement no.	Number of contacts	Size contacts	Service rating	Contact location	Supersedes
25	-43	20	16	I	a.b.c.d.e.f.g.h.k.m. n.p.q.r.s.t.u.v.w.x	MS20057-43
		23	20		All others	

Panel cutout

JAM NUT RECEPTACLE (TYPE 7)

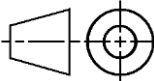


Dim	Nominal
B	43.43+0/-0.25
ØC	44.7+0.25/-0

SOURIAU shall not be liable for any non-conformity or damage due to a use of the Products which does not comply with the Specifications issued by either of the Parties or by a third party (professional recommendation, technical notice.)

Country	Jurisdiction & Control List
FR	Not Listed

PN: 8D725W43SB

A	05-10-2016	First Release		
ISS	DATE	Latest modification - by		MOD N°
Designed By:		Date:	CUSTOMER DRAWING	
TITLE		Aluminium Receptacle 8D series		
SCALE		General linear	NPRDS / PROJECT	
NA		Tolerances: ±--	859	
SOURIAU		WWW.SOURIAU.COM		This document is the property of SOURIAU it must not be reproduced or communicated without permission
FORMAT	SOURIAU DRG N° 8D725W43SB-C			SHEET 2/2
A3				

# Mouser Electronics

Authorized Distributor

Click to View Pricing, Inventory, Delivery & Lifecycle Information:

Souriau:

8D725W43SB