

### Description

The [SiT9367](#) is a 220.000001 MHz to 725 MHz differential MEMS XO engineered for low-jitter applications. Utilizing SiTime's unique DualMEMS® temperature sensing and TurboCompensation® technology, the SiT9367 delivers exceptional dynamic performance by providing resistance to airflow, thermal gradients, shock and vibration. This device also integrates multiple on-chip regulators to filter power supply noise, eliminating the need for a dedicated external LDO.

The SiT9367 can be factory programmed for any combination of frequency, stability, voltage, and output signaling. Programmability enables designers to optimize clock configurations while eliminating long lead times and customization costs associated with quartz devices where each frequency is custom built.

The wide frequency range and programmability makes this device ideal for telecom, networking, and industrial applications that require a variety of frequencies and operate in noisy environments.

Refer to [Manufacturing Notes](#) for proper reflow profile, tape and reel dimension, and other manufacturing related information.

### Features

- Any frequency between 220.000001 MHz and 725 MHz, accurate to 6 decimal places.  
For HCSL output signaling, maximum frequency is 500 MHz. [Contact SiTime](#) for higher frequency options.  
(For additional frequencies, refer to [SiT9366](#) and [SiT9365](#) datasheets)
- LVPECL, Low-swing LVPECL, LVDS and HCSL output signaling
- 0.1ps RMS phase jitter (random) for Ethernet applications
- Frequency stability as low  $\pm 10$  ppm
- Wide temperature range from -40°C to 105°C  
[Contact SiTime](#) for higher temperature range options
- Industry-standard packages: 3.2 x 2.5 mm<sup>2</sup>, 7.0 x 5.0 mm<sup>2</sup> and 5.0 x 3.2 mm<sup>2</sup> package

### Applications

- 100 Gbps Ethernet, SONET, SATA, SAS, Fibre Channel
- Telecom, networking, instrumentation, storage, servers

Related products for [automotive applications](#).

For aerospace and defense applications SiTime recommends using only [Endura™ SiT9347](#).



Order  
samples



Buy at  
SiTimeDirect



Green  
solutions



Lifetime  
warranty

### Block Diagram

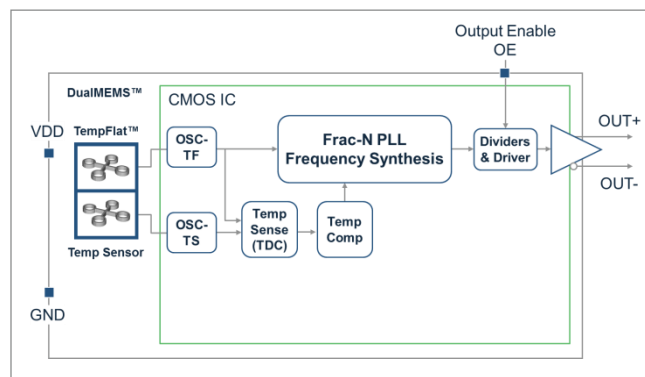


Figure 1. SiT9367 Block Diagram

### Package Pinout

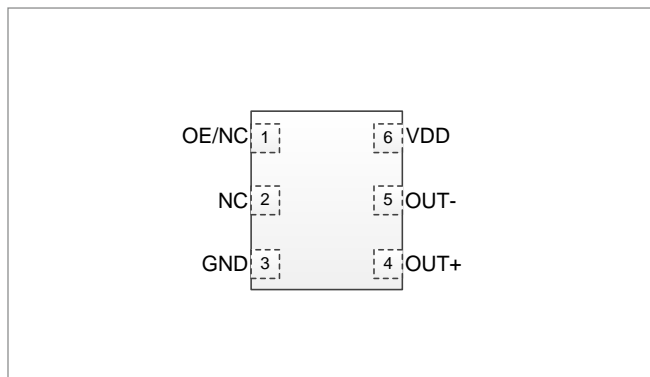
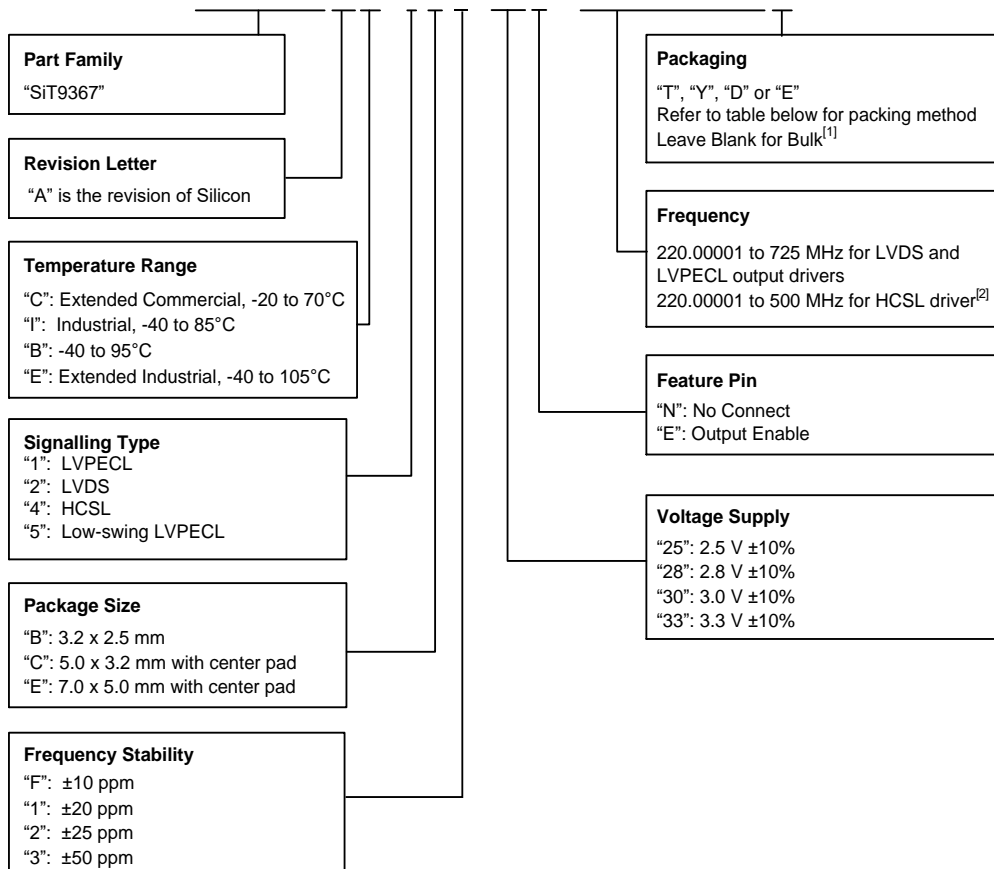


Figure 2. Pin Assignments (Top view)  
(Refer to [Table 6](#) for Pin Descriptions)

## Ordering Information

SiT9367AC-1B2-33E322.265625T



### Notes:

- Bulk is available for sampling only.
- Contact SiTime for higher frequency HCSL options.

**Table 1. Ordering Codes for Supported Tape & Reel Packing Method**

Device Size (mm x mm)	8 mm T&R (3ku)	8 mm T&R (1ku)	12 mm T&R (3ku)	12 mm T&R (1ku)	16 mm T&R (3ku)	16 mm T&R (1ku)
7.0 x 5.0	—	—	—	—	T	Y
5.0 x 3.2			T	Y		
3.2 x 2.5	D	E			—	—

## TABLE OF CONTENTS

Description .....	1
Features .....	1
Applications .....	1
Block Diagram .....	1
Package Pinout .....	1
Ordering Information .....	2
Electrical Characteristics .....	4
Waveform Diagrams .....	9
Timing Diagrams .....	10
Termination Diagrams .....	11
LVPECL and Low-swing LVPECL .....	11
LVDS .....	12
HCSL .....	12
Dimensions and Patterns — 3.2 x 2.5 mm <sup>2</sup> .....	13
Dimensions and Patterns — 5.0 x 3.2 mm <sup>2</sup> .....	13
Dimensions and Patterns — 7.0 x 5.0 mm <sup>2</sup> .....	14
Additional Information .....	15
Revision History .....	16

## Electrical Characteristics

All Min and Max limits in the Electrical Characteristics tables are specified over temperature and rated operating voltage with standard output termination shown in the termination diagrams. Typical values are at 25°C at nominal supply voltage.

**Table 2. Electrical Characteristics – Common to LVPECL, Low-swing LVPECL, LVDS and HCSL**

Parameter	Symbol	Min.	Typ.	Max.	Unit	Condition
Frequency Range						
Output Frequency Range	f	220.000001	–	725	MHz	Accurate to 6 decimal places
Frequency Stability						
Frequency Stability	F_stab	-10	–	+10	ppm	Inclusive of initial tolerance, operating temperature, rated power supply voltage and load variations
		-20	–	+20	ppm	
		-25	–	+25	ppm	
		-50	–	+50	ppm	
First Year Aging	F_1y	-0.7	±0.4	+0.7	ppm	At 85°C
5 Year Aging	F_5y	-1.1	±0.7	+1.1	ppm	At 85°C
10 Year Aging	F_10y	-1.3	±0.8	+1.3	ppm	At 85°C
20 Year Aging	F_20y	-1.5	±1.0	+1.5	ppm	At 85°C
Temperature Range						
Operating Temperature Range	T_use	-20	–	+70	°C	Extended Commercial
		-40	–	+85	°C	Industrial
		-40	–	+95	°C	
		-40	–	+105	°C	Extended Industrial
Supply Voltage						
Supply Voltage	Vdd	2.97	3.30	3.63	V	
		2.70	3.00	3.30	V	
		2.52	2.80	3.08	V	
		2.25	2.50	2.75	V	
Input Characteristics						
Input Voltage High	VIH	70%	–	–	Vdd	Pin 1, OE
Input Voltage Low	VIL	–	–	30%	Vdd	Pin 1, OE
Input Pull-up Impedance	Z_in	–	100	-	kΩ	Pin 1, OE logic high or logic low
Output Characteristics						
Duty Cycle	DC	45	–	55	%	
Startup and OE Timing						
Startup Time	T_start	–	–	3.0	ms	Measured from the time Vdd reaches its rated minimum value.
OE Enable/Disable Time	T_oe	–	–	3.8	μs	f = 322.265625 MHz. Measured from the time OE pin reaches rated VIH and VIL to the time clock pins reach 90% of swing and high-Z. See <a href="#">Figure 8</a> and <a href="#">Figure 9</a>

Table 3. Electrical Characteristics – LVPECL Specific

Parameter	Symbol	Min.	Typ.	Max.	Unit	Condition
Current Consumption						
Current Consumption	I <sub>dd</sub>	–	–	94	mA	Excluding Load Termination Current, V <sub>dd</sub> = 3.3 V or 2.5 V
OE Disable Supply Current	I <sub>OE</sub>	–	–	63	mA	OE = Low
Output Disable Leakage Current	I <sub>leak</sub>	–	0.15	–	μA	OE = Low
Maximum Output Current	I <sub>driver</sub>	–	–	33	mA	Maximum average current drawn from OUT+ or OUT-
Output Characteristics for LVPECL						
Output High Voltage	VOH	V <sub>dd</sub> -1.15	–	V <sub>dd</sub> -0.7	V	See <a href="#">Figure 4</a>
Output Low Voltage	VOL	V <sub>dd</sub> -2.0	–	V <sub>dd</sub> -1.5	V	See <a href="#">Figure 4</a>
Output Differential Voltage Swing	V <sub>Swing</sub>	1.2	1.6	2.0	V	See <a href="#">Figure 5</a>
Rise/Fall Time	Tr, Tf	–	225	330	ps	20% to 80%, see <a href="#">Figure 5</a>
Output Characteristics for Low-swing LVPECL						
Output High Voltage	VOH	V <sub>dd</sub> -1.2	–	V <sub>dd</sub> -0.75	V	See <a href="#">Figure 4</a>
Output Low Voltage	VOL	V <sub>dd</sub> -1.8	–	V <sub>dd</sub> -1.25	V	See <a href="#">Figure 4</a>
Output Differential Voltage Swing	V <sub>Swing</sub>	0.4	1	1.2	V	Output frequency 1 to 220 MHz, See <a href="#">Figure 5</a>
		0.4	1	1.6	V	Output frequency greater than 220 MHz, See <a href="#">Figure 5</a>
Rise/Fall Time	Tr, Tf	–	225	320	ps	20% to 80%. See <a href="#">Figure 5</a>
Jitter – 7.0 x 5.0 mm Package						
RMS Period Jitter <sup>[3]</sup>	T <sub>jitt</sub>	–	1.0	1.6	Ps	f = 100, 156.25 or 212.5 MHz, V <sub>dd</sub> = 3.3 V or 2.5 V
RMS Phase Jitter (random)	T <sub>phj</sub>	–	0.220	0.270	Ps	f = 322.265625 MHz, Integration bandwidth = 12 kHz to 20 MHz, all V <sub>dd</sub> levels, includes spurs. Temperature ranges -20 to 70°C and -40 to 85°C.
		–	0.220	0.300	Ps	f = 322.265625 MHz, Integration bandwidth = 12 kHz to 20 MHz, all V <sub>dd</sub> levels, includes spurs. Temperature ranges -40 to 95°C and -40 to 105°C
		–	0.1	–	Ps	f = 322.265625 MHz, IEEE802.3-2005 10GbE jitter mask integration bandwidth = 1.875 MHz to 20 MHz, Includes spurs, all V <sub>dd</sub> levels
Jitter – 5.0 x 3.2 and 3.2 x 2.5 mm Packages						
RMS Period Jitter <sup>[3]</sup>	T <sub>jitt</sub>	–	1.0	1.6	Ps	f = 100, 156.25 or 212.5 MHz, V <sub>dd</sub> = 3.3 V or 2.5 V
RMS Phase Jitter (random)	T <sub>phj</sub>	–	0.225	0.282	ps	f = 322.265625 MHz, Integration bandwidth = 12 kHz to 20 MHz, all V <sub>dd</sub> levels, includes spurs. Temperature ranges -20 to 70°C and -40 to 85°C.
		–	0.225	0.315	ps	f = 322.265625 MHz, Integration bandwidth = 12 kHz to 20 MHz, all V <sub>dd</sub> levels, includes spurs. Temperature ranges -40 to 95°C and -40 to 105°C
		–	0.1	–	ps	f = 322.265625 MHz, IEEE802.3-2005 10GbE jitter mask integration bandwidth = 1.875 MHz to 20 MHz, Includes spurs, all V <sub>dd</sub> levels

**Notes:**

3. Measured according to JESD65B.

Table 4. Electrical Characteristics – LVDS Specific

Parameter	Symbol	Min.	Typ.	Max.	Unit	Condition
Current Consumption						
Current Consumption	I <sub>dd</sub>	–	–	85	mA	Excluding Load Termination Current, V <sub>dd</sub> = 3.3 V or 2.5 V
OE Disable Supply Current	I <sub>OE</sub>	–	–	63	mA	OE = Low
Output Disable Leakage Current	I <sub>leak</sub>	–	0.15	–	μA	OE = Low
Output Characteristics						
Differential Output Voltage	V <sub>OD</sub>	300	–	450	mV	See Figure 6
V <sub>OD</sub> Magnitude Change	ΔV <sub>OD</sub>	–	–	50	mV	See Figure 6
Offset Voltage	V <sub>OS</sub>	1.125	–	1.375	V	See Figure 6
V <sub>OS</sub> Magnitude Change	ΔV <sub>OS</sub>	–	–	50	mV	See Figure 6
Rise/Fall Time	T <sub>r</sub> , T <sub>f</sub>	–	370	470	ps	Measured with 2 pF capacitive loading to GND, 20% to 80%, see Figure 3
Jitter – 7.0 x 5.0 mm Package						
RMS Period Jitter <sup>[4]</sup>	T <sub>jitt</sub>	–	0.92	1.6	ps	f = 100, 156.25 or 212.5 MHz, V <sub>dd</sub> = 3.3 V or 2.5 V
RMS Phase Jitter (random)	T <sub>phj</sub>	–	0.215	0.265	ps	f = 322.265625 MHz, Integration bandwidth = 12 kHz to 20 MHz, all V <sub>dd</sub> levels, includes spurs. Temperature ranges -20 to 70°C and -40-85°C.
		–	0.215	0.280	ps	f = 322.265625 MHz, Integration bandwidth = 12 kHz to 20 MHz, all V <sub>dd</sub> levels, includes spurs. Temperature ranges are -40 to 95°C and -40 to 105°C.
		–	0.1	–	ps	f = 322.265625 MHz, IEEE802.3-2005 10GbE jitter mask integration bandwidth = 1.875 MHz to 20 MHz. Includes spurs for all V <sub>dd</sub> levels.
Jitter – 5.0 x 3.2 and 3.2 x 2.5 mm Packages						
RMS Period Jitter <sup>[4]</sup>	T <sub>jitt</sub>	–	0.92	1.6	ps	f = 100, 156.25 or 212.5 MHz, V <sub>dd</sub> = 3.3 V or 2.5 V
RMS Phase Jitter (random)	T <sub>phj</sub>	–	0.235	0.282	ps	f = 322.265625 MHz, Integration bandwidth = 12 kHz to 20 MHz, all V <sub>dd</sub> levels, includes spurs. Temperature ranges -20 to 70°C and -40-85°C.
		–	0.235	0.310	ps	f = 322.265625 MHz, Integration bandwidth = 12 kHz to 20 MHz, all V <sub>dd</sub> levels, includes spurs. Temperature ranges are -40 to 95°C and -40 to 105°C.
		–	0.1	–	ps	f = 322.265625 MHz, IEEE802.3-2005 10GbE jitter mask integration bandwidth = 1.875 MHz to 20 MHz. Includes spurs for all V <sub>dd</sub> levels.

**Notes:**

- Measured according to JESD65B.

Table 5. Electrical Characteristics – HCSL Specific

Parameter	Symbol	Min.	Typ.	Max.	Unit	Condition
Current Consumption						
Current Consumption	I <sub>dd</sub>	–	–	97	mA	Excluding Load Termination Current, V <sub>dd</sub> = 3.3 V or 2.5 V
OE Disable Supply Current	I <sub>OE</sub>	–	–	63	mA	OE = Low
Output Disable Leakage Current	I <sub>leak</sub>	–	0.15	–	μA	OE = Low
Maximum Output Current	I <sub>driver</sub>	–	–	35	mA	Maximum average current drawn from OUT+ or OUT-
Output Characteristics						
Output High Voltage	VOH	0.60	–	0.90	V	See Figure 4
Output Low Voltage	VOL	-0.05	–	0.08	V	See Figure 4
Output Differential Voltage Swing	V <sub>Swing</sub>	1.2	1.4	1.9	V	See Figure 5
Rise/Fall Time	Tr, Tf	–	360	505	ps	Measured with 2 pF capacitive loading to GND, 20% to 80%, see Figure 4
Jitter – 7.0 x 5.0 mm Package						
RMS Period Jitter <sup>[5]</sup>	T <sub>jitt</sub>	–	1.0	1.6	ps	f = 100, 156.25 or 212.5 MHz, V <sub>dd</sub> = 3.3 V or 2.5 V
RMS Phase Jitter (random)	T <sub>phj</sub>	–	0.215	0.265	ps	f = 322.265625 MHz, Integration bandwidth = 12 kHz to 20 MHz, all V <sub>dd</sub> levels, includes spurs. Temperature ranges -20 to 70°C and -40 to 85°C
		–	0.215	0.282	ps	f = 322.265625 MHz, Integration bandwidth = 12 kHz to 20 MHz, all V <sub>dd</sub> levels, includes spurs. Temperature range ranges -40 to 95°C and -40 to 105°C
		–	0.1	–	ps	f = 322.265625 MHz, IEEE802.3-2005 10GbE jitter mask integration bandwidth = 1.875 MHz to 20 MHz, Includes spurs, all V <sub>dd</sub> levels
Jitter – 5.0 x 3.2 and 3.2 x 2.5 mm Packages						
RMS Period Jitter <sup>[5]</sup>	T <sub>jitt</sub>	–	1.0	1.6	ps	f = 100, 156.25 or 212.5 MHz, V <sub>dd</sub> = 3.3 V or 2.5 V
RMS Phase Jitter (random)	T <sub>phj</sub>	–	0.235	0.282	ps	f = 322.265625 MHz, Integration bandwidth = 12 kHz to 20 MHz, all V <sub>dd</sub> levels, includes spurs. Temperature ranges -20 to 70°C and -40 to 85°C
		–	0.235	0.305	ps	f = 322.265625 MHz, Integration bandwidth = 12 kHz to 20 MHz, all V <sub>dd</sub> levels, includes spurs. Temperature ranges -40 to 95°C and -40 to 105°C
		–	0.1	–	ps	f = 322.265625 MHz, IEEE802.3-2005 10GbE jitter mask integration bandwidth = 1.875 MHz to 20 MHz, Includes spurs for all V <sub>dd</sub> levels.

**Note:**

5. Measured according to JESD65B

Table 6. Pin Description

Pin	Map	Functionality	
1	OE/NC	Output Enable (OE)	H <sup>[6]</sup> : specified frequency output L: output is high impedance
		Non Connect (NC)	H or L or Open: No effect on output frequency or other device functions.
2	NC	NA	No Connect; Leave it floating or connect to GND for better heat dissipation
3	GND	Power	VDD Power Supply Ground
4	OUT+	Output	Oscillator output
5	OUT-	Output	Complementary oscillator output
6	VDD	Power	Power supply voltage <sup>[7]</sup>

**Notes:**

6. In OE mode, a pull-up resistor of 10 kΩ or less is recommended if pin 1 is not externally driven.  
 7. A capacitor of value 0.1 μF or higher between VDD and GND is required. An additional 10 μF capacitor between VDD and GND is required for the best phase jitter performance.

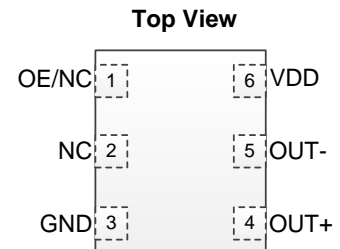


Figure 3. Pin Assignments

**Table 7. Absolute Maximum Ratings**

**Caution:** Attempted operation outside the absolute maximum ratings may cause permanent damage to the part. Actual performance of the IC is only guaranteed within the operational specifications, not at absolute maximum ratings.

Parameter	Min.	Max.	Unit
V <sub>dd</sub>	-0.5	4.0	V
V <sub>IH</sub>		V <sub>dd</sub> + 0.3V	V
V <sub>IL</sub>	-0.3		V
Storage Temperature	-65	150	°C
Maximum Junction Temperature		130	°C
Soldering Temperature (follow standard Pb-free soldering guidelines)		260	°C

**Table 8. Thermal Considerations<sup>[8]</sup>**

Package	$\theta_{JA}$ , 4 Layer Board (°C/W)	$\theta_{JC}$ , Bottom (°C/W)
3225, 6-pin	80	30
5032, 6-pin	53	20
7050, 6-pin	52	19

**Notes:**

8. Refer to JESD51 for  $\theta_{JA}$  and  $\theta_{JC}$  definitions, and reference layout used to determine the  $\theta_{JA}$  and  $\theta_{JC}$  values in the above table.

**Table 9. Maximum Operating Junction Temperature<sup>[9]</sup>**

Max Operating Temperature (ambient)	Maximum Operating Junction Temperature
70°C	95°C
85°C	110°C
95°C	120°C
105°C	130°C

**Notes:**

9. Datasheet specifications are not guaranteed if junction temperature exceeds the maximum operating junction temperature.

**Table 10. Environmental Compliance**

Parameter	Test Conditions	Value	Unit
Mechanical Shock Resistance	MIL-STD-883F, Method 2002	10,000	g
Mechanical Vibration Resistance	MIL-STD-883F, Method 2007	70	g
Soldering Temperature (follow standard Pb free soldering guidelines)	MIL-STD-883F, Method 2003	260	°C
Moisture Sensitivity Level	MSL1 @ 260°C		
Electrostatic Discharge (HBM)	HBM, JESD22-A114	2,000	V
Charge-Device Model ESD Protection	JESD220C101	750	V
Latch-up Tolerance	JESD78 Compliant		



## Waveform Diagrams

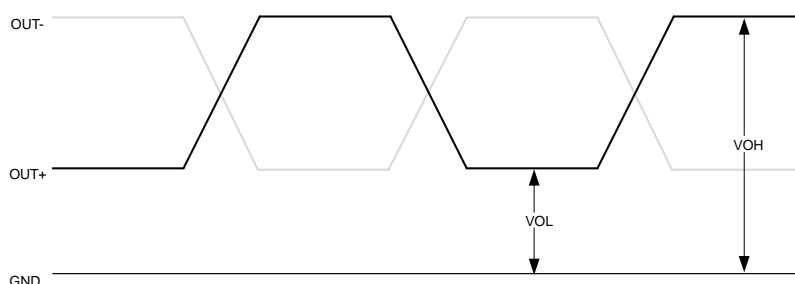


Figure 4. LVPECL, Low-swing LVPECL, and HCSL Voltage Levels per Differential Pin (i.e. OUT+, or OUT-)

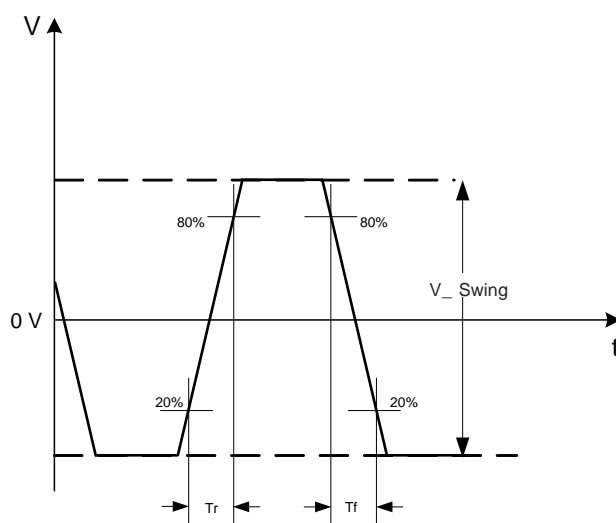


Figure 5. LVPECL, Low-swing LVPECL, and HCSL Voltage Levels Across Differential Pair (i.e. OUT+ minus OUT-)

## Waveform Diagrams (continued)

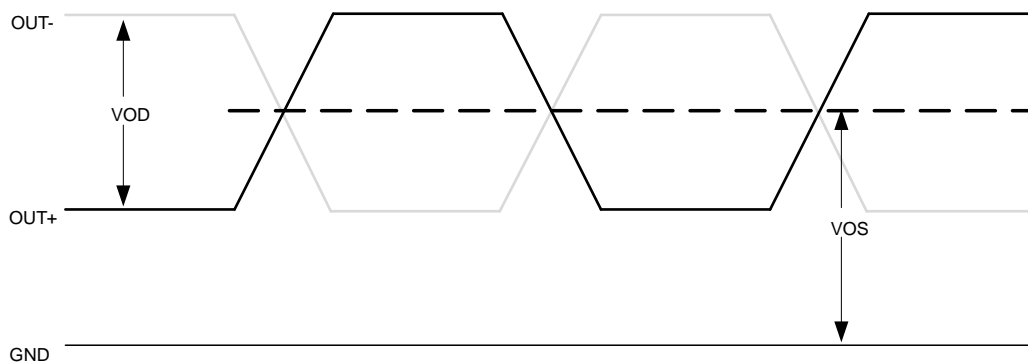


Figure 6. LVDS Voltage Levels per Differential Pin (i.e. OUT+, or OUT-)

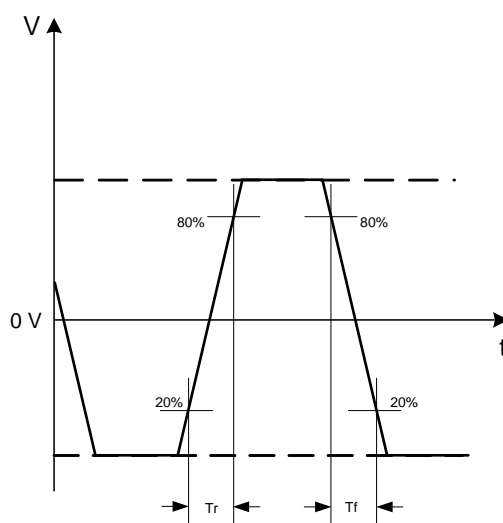


Figure 7. LVDS Differential Waveform (i.e. OUT+ minus OUT-)

## Timing Diagrams

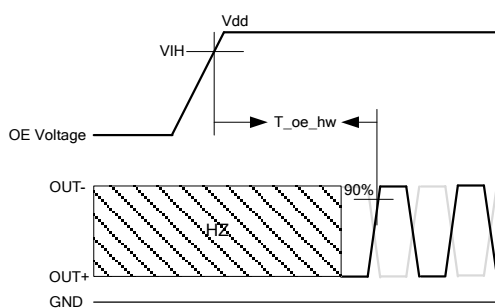


Figure 8. Hardware OE Enable Timing

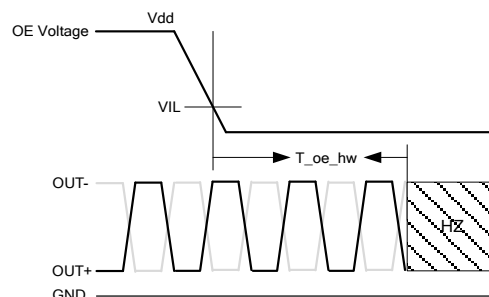
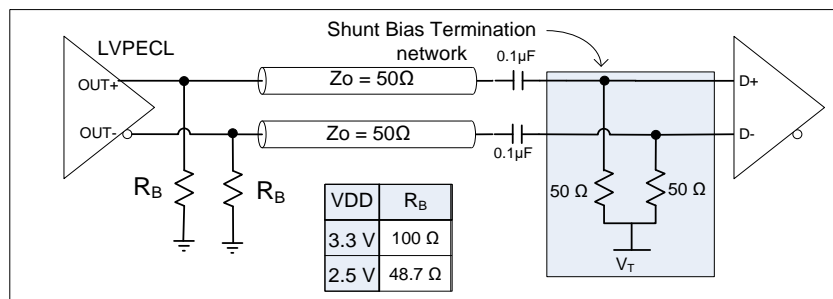


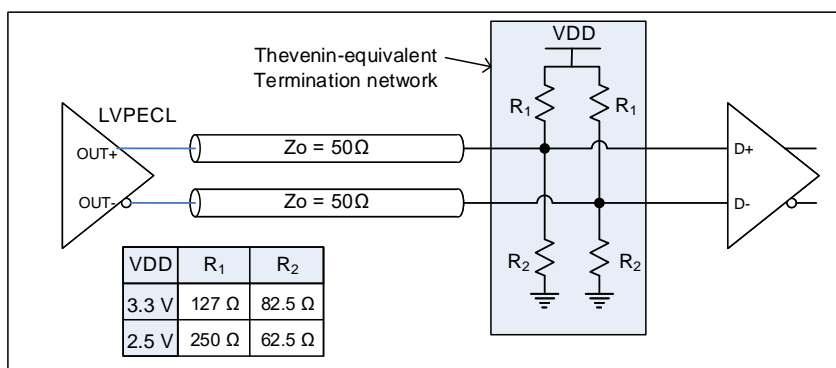
Figure 9. Hardware OE Disable Timing

## Termination Diagrams

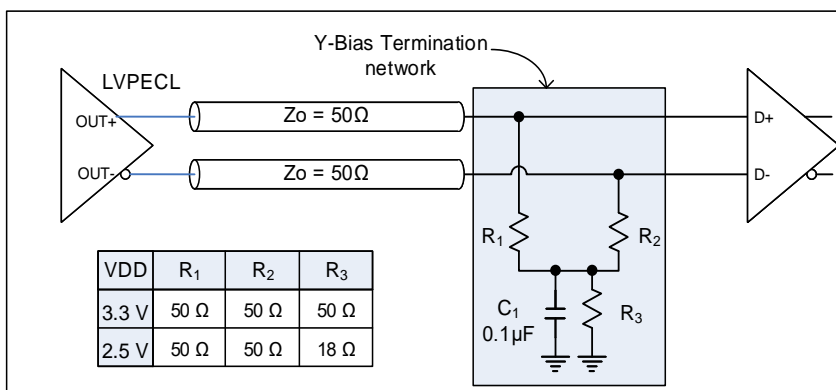
### LVPECL and Low-swing LVPECL



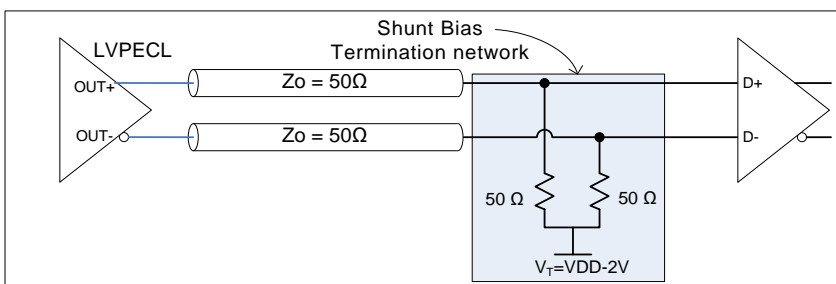
**Figure 10. LVPECL and Low-swing LVPECL with AC-coupled Termination**



**Figure 11. LVPECL and Low-swing LVPECL DC-coupled Load Termination with Thevenin Equivalent Network**



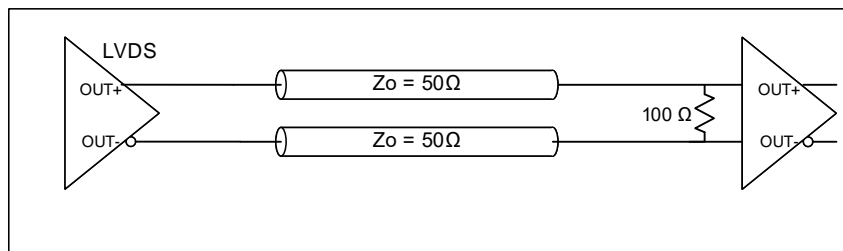
**Figure 12. LVPECL and Low-swing LVPECL with Y-Bias Termination**



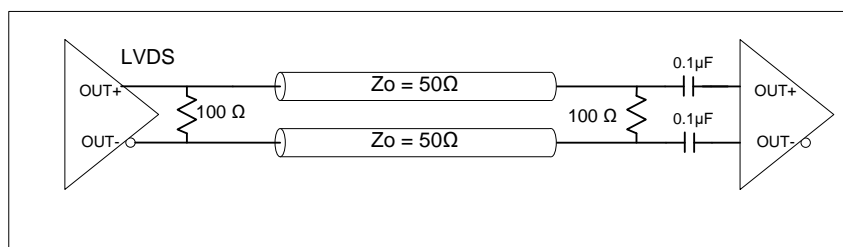
**Figure 13. LVPECL and Low-swing LVPECL with DC-coupled Parallel Shunt Load Termination**

## Termination Diagrams (continued)

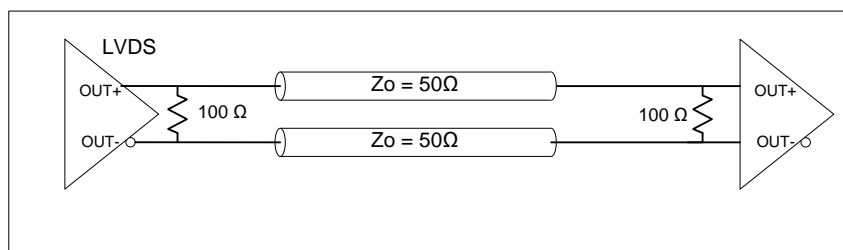
### LVDS



**Figure 14. LVDS Single DC Termination at the Load**

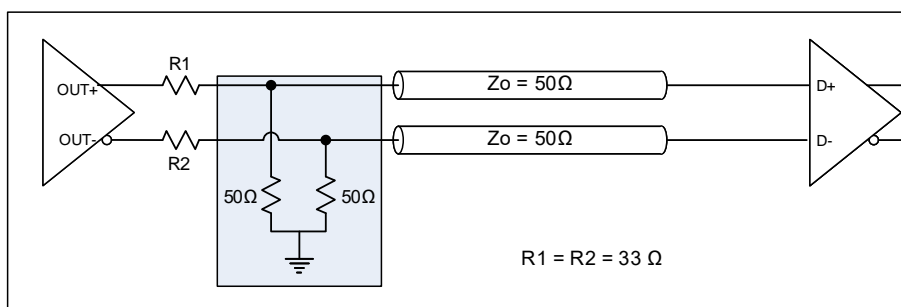


**Figure 15. LVDS double AC Termination with Capacitor Close to the Load**



**Figure 16. LVDS Double DC Termination**

### HCSL



**Figure 17. HCSL Interface Termination**

## Dimensions and Patterns — 3.2 x 2.5 mm<sup>2</sup>

Package Size – Dimensions (Unit: mm) <sup>[10]</sup>		Recommended Land Pattern (Unit: mm) <sup>[11]</sup>																																																																										
3.2 x 2.5 x 0.85 mm		3.2 x 2.5 x 0.85 mm																																																																										
<p>TOP VIEW</p> <p>BOTTOM VIEW</p> <p>SIDE VIEW</p>																																																																												
<table><thead><tr><th></th><th>SYMBOL</th><th>MIN</th><th>NOM</th><th>MAX</th></tr></thead><tbody><tr><td>TOTAL THICKNESS</td><td>A</td><td>0.800</td><td>0.850</td><td>0.900</td></tr><tr><td>STAND OFF</td><td>A1</td><td>0.000</td><td>0.035</td><td>0.050</td></tr><tr><td rowspan="2">BODY SIZE</td><td>X</td><td>D</td><td>3.200 BSC</td><td></td></tr><tr><td>Y</td><td>E</td><td>2.500 BSC</td><td></td></tr><tr><td>LEAD WIDTH</td><td>b</td><td>0.550</td><td>0.600</td><td>0.650</td></tr><tr><td rowspan="2">LEAD LENGTH</td><td>L</td><td>0.650</td><td>0.700</td><td>0.750</td></tr><tr><td>L1</td><td></td><td>0.800 REF</td><td></td></tr><tr><td>LEAD PITCH</td><td>e</td><td></td><td>1.100 BSC</td><td></td></tr><tr><td>PACKAGE TOLERANCE</td><td>aaa</td><td></td><td>0.100</td><td></td></tr><tr><td>MOLD FLATNESS</td><td>bbb</td><td></td><td>0.100</td><td></td></tr><tr><td>COPLANARITY</td><td>ccc</td><td></td><td>0.080</td><td></td></tr><tr><td>DIMPLE WIDTH</td><td>T</td><td></td><td>0.150 REF</td><td></td></tr><tr><td>DIMPLE LENGTH</td><td>P</td><td></td><td>0.150 REF</td><td></td></tr><tr><td>DIMPLE DEPTH</td><td>A2</td><td></td><td>0.100 REF</td><td></td></tr></tbody></table>			SYMBOL	MIN	NOM	MAX	TOTAL THICKNESS	A	0.800	0.850	0.900	STAND OFF	A1	0.000	0.035	0.050	BODY SIZE	X	D	3.200 BSC		Y	E	2.500 BSC		LEAD WIDTH	b	0.550	0.600	0.650	LEAD LENGTH	L	0.650	0.700	0.750	L1		0.800 REF		LEAD PITCH	e		1.100 BSC		PACKAGE TOLERANCE	aaa		0.100		MOLD FLATNESS	bbb		0.100		COPLANARITY	ccc		0.080		DIMPLE WIDTH	T		0.150 REF		DIMPLE LENGTH	P		0.150 REF		DIMPLE DEPTH	A2		0.100 REF		Notes 1. All dimensions are in millimeters	
	SYMBOL	MIN	NOM	MAX																																																																								
TOTAL THICKNESS	A	0.800	0.850	0.900																																																																								
STAND OFF	A1	0.000	0.035	0.050																																																																								
BODY SIZE	X	D	3.200 BSC																																																																									
	Y	E	2.500 BSC																																																																									
LEAD WIDTH	b	0.550	0.600	0.650																																																																								
LEAD LENGTH	L	0.650	0.700	0.750																																																																								
	L1		0.800 REF																																																																									
LEAD PITCH	e		1.100 BSC																																																																									
PACKAGE TOLERANCE	aaa		0.100																																																																									
MOLD FLATNESS	bbb		0.100																																																																									
COPLANARITY	ccc		0.080																																																																									
DIMPLE WIDTH	T		0.150 REF																																																																									
DIMPLE LENGTH	P		0.150 REF																																																																									
DIMPLE DEPTH	A2		0.100 REF																																																																									
<table><thead><tr><th colspan="2">Package Outline</th></tr></thead><tbody><tr><td>6L PQFD</td><td>POD-038-PQFD-006-C03225</td></tr><tr><td>3.200x2.500x0.850 mm</td><td></td></tr><tr><td>2021/07/15 Rev C00</td><td></td></tr></tbody></table>		Package Outline		6L PQFD	POD-038-PQFD-006-C03225	3.200x2.500x0.850 mm		2021/07/15 Rev C00																																																																				
Package Outline																																																																												
6L PQFD	POD-038-PQFD-006-C03225																																																																											
3.200x2.500x0.850 mm																																																																												
2021/07/15 Rev C00																																																																												

## Dimensions and Patterns — 5.0 x 3.2 mm<sup>2</sup>

Package Size – Dimensions (Unit: mm) <sup>[10]</sup>		Recommended Land Pattern (Unit: mm) <sup>[11]</sup>																																																																																			
5.0 x 3.2 x 0.85 mm <sup>[12]</sup>		5.0 x 3.2 x 0.85 mm <sup>[12]</sup>																																																																																			
<p>TOP VIEW</p> <p>BOTTOM VIEW</p> <p>SIDE VIEW</p>																																																																																					
<table><thead><tr><th></th><th>SYMBOL</th><th>MIN</th><th>NOM</th><th>MAX</th></tr></thead><tbody><tr><td>TOTAL THICKNESS</td><td>A</td><td>0.800</td><td>0.850</td><td>0.900</td></tr><tr><td>STAND OFF</td><td>A1</td><td>0.000</td><td>0.035</td><td>0.050</td></tr><tr><td rowspan="2">BODY SIZE</td><td>X</td><td>D</td><td>5.000 BSC</td><td></td></tr><tr><td>Y</td><td>E</td><td>3.200 BSC</td><td></td></tr><tr><td rowspan="2">EP SIZE</td><td>X</td><td>J</td><td>3.100</td><td>3.300</td></tr><tr><td>Y</td><td>K</td><td>0.500</td><td>0.700</td></tr><tr><td>LEAD WIDTH</td><td>b</td><td>0.590</td><td>0.640</td><td>0.690</td></tr><tr><td rowspan="2">LEAD LENGTH</td><td>L</td><td>0.850</td><td>0.900</td><td>0.950</td></tr><tr><td>L1</td><td></td><td>1.000 REF</td><td></td></tr><tr><td>LEAD PITCH</td><td>e</td><td></td><td>1.270 BSC</td><td></td></tr><tr><td>PACKAGE TOLERANCE</td><td>aaa</td><td></td><td>0.100</td><td></td></tr><tr><td>MOLD FLATNESS</td><td>bbb</td><td></td><td>0.100</td><td></td></tr><tr><td>COPLANARITY</td><td>ccc</td><td></td><td>0.080</td><td></td></tr><tr><td>DIMPLE WIDTH</td><td>T</td><td></td><td>0.300 REF</td><td></td></tr><tr><td>DIMPLE LENGTH</td><td>P</td><td></td><td>0.150 REF</td><td></td></tr><tr><td>DIMPLE DEPTH</td><td>A2</td><td></td><td>0.100 REF</td><td></td></tr></tbody></table> <p>Notes</p> <p>1. Dimensioning and tolerancing conform to ASME Y14.5-2009</p> <p>2. All dimensions are in millimeters</p>			SYMBOL	MIN	NOM	MAX	TOTAL THICKNESS	A	0.800	0.850	0.900	STAND OFF	A1	0.000	0.035	0.050	BODY SIZE	X	D	5.000 BSC		Y	E	3.200 BSC		EP SIZE	X	J	3.100	3.300	Y	K	0.500	0.700	LEAD WIDTH	b	0.590	0.640	0.690	LEAD LENGTH	L	0.850	0.900	0.950	L1		1.000 REF		LEAD PITCH	e		1.270 BSC		PACKAGE TOLERANCE	aaa		0.100		MOLD FLATNESS	bbb		0.100		COPLANARITY	ccc		0.080		DIMPLE WIDTH	T		0.300 REF		DIMPLE LENGTH	P		0.150 REF		DIMPLE DEPTH	A2		0.100 REF			
	SYMBOL	MIN	NOM	MAX																																																																																	
TOTAL THICKNESS	A	0.800	0.850	0.900																																																																																	
STAND OFF	A1	0.000	0.035	0.050																																																																																	
BODY SIZE	X	D	5.000 BSC																																																																																		
	Y	E	3.200 BSC																																																																																		
EP SIZE	X	J	3.100	3.300																																																																																	
	Y	K	0.500	0.700																																																																																	
LEAD WIDTH	b	0.590	0.640	0.690																																																																																	
LEAD LENGTH	L	0.850	0.900	0.950																																																																																	
	L1		1.000 REF																																																																																		
LEAD PITCH	e		1.270 BSC																																																																																		
PACKAGE TOLERANCE	aaa		0.100																																																																																		
MOLD FLATNESS	bbb		0.100																																																																																		
COPLANARITY	ccc		0.080																																																																																		
DIMPLE WIDTH	T		0.300 REF																																																																																		
DIMPLE LENGTH	P		0.150 REF																																																																																		
DIMPLE DEPTH	A2		0.100 REF																																																																																		
<table><thead><tr><th colspan="2">Package Outline</th></tr></thead><tbody><tr><td>6L PQFV</td><td>POD-PGFV-006-C05032-039</td></tr><tr><td>5.000x3.200x0.850 mm</td><td></td></tr><tr><td>2019/03/13 Rev B00</td><td></td></tr></tbody></table>		Package Outline		6L PQFV	POD-PGFV-006-C05032-039	5.000x3.200x0.850 mm		2019/03/13 Rev B00																																																																													
Package Outline																																																																																					
6L PQFV	POD-PGFV-006-C05032-039																																																																																				
5.000x3.200x0.850 mm																																																																																					
2019/03/13 Rev B00																																																																																					

### Notes:

- Top Marking: Y denotes manufacturing origin and XXXX denotes manufacturing lot number. The value of “Y” will depend on the assembly location of the device.
- A capacitor of value 0.1  $\mu$ F or higher between VDD and GND is required. An additional 10  $\mu$ F capacitor between VDD and GND is required for the best phase jitter performance.
- The center pad has no electrical function. Soldering down the center pad to the GND is recommended for best thermal dissipation, but is optional.

## Dimensions and Patterns — 7.0 x 5.0 mm<sup>2</sup>

# Package Size – Dimensions (Unit: mm)<sup>[13]</sup>

# Recommended Land Pattern (Unit: mm)<sup>[14]</sup>

7.0 x 5.0 x 0.85 mm<sup>[15]</sup>

7.0 x 5.0 x 0.85 mm<sup>[15]</sup>

	SYMBOL	MIN	NOM	MAX
TOTAL THICKNESS	A	0.800	0.850	0.900
STAND OFF	A1	0.000	0.035	0.050
BODY SIZE	X	D	7.000 BSC	
	Y	E	5.000 BSC	
EP SIZE	X	J	3.400	3.500 3.600
	Y	K	1.400	1.500 1.600
LEAD WIDTH	b	1.350	1.400	1.450
LEAD LENGTH	L	0.850	0.900	0.950
	L1		1.000 REF	
LEAD PITCH	e		2.540 BSC	
PACKAGE TOLERANCE	aaa		0.100	
MOLD FLATNESS	bbb		0.100	
COPLANARITY	ccc		0.080	
DIMPLE WIDTH	T		0.300 REF	
DIMPLE LENGTH	P		0.150 REF	
DIMPLE DEPTH	A2		0.100 REF	

## Notes

1. Dimensioning and tolerancing conform to ASME Y14.5-2009
2. All dimensions are in millimeters

## Note:

Circles in center pad are thermal vias, recommended to improve thermal performance

## Package Outline

6L PQFV	POD-PQFV-006-C07050-037
7.000x5.000x0.850 mm	
2019/03/13 Rev 800	

### Notes:

- Top Marking: Y denotes manufacturing origin and XXXX denotes manufacturing lot number. The value of "Y" will depend on the assembly location of the device.
- A capacitor of value 0.1  $\mu$ F or higher between VDD and GND is required. An additional 10  $\mu$ F capacitor between VDD and GND is required for the best phase jitter performance.
- The center pad has no electrical function. Soldering down the center pad to the GND is recommended for best thermal dissipation, but is optional.

## Additional Information

**Table 11. Additional Information**

Document	Description	Download Link
<b>ECCN #: EAR99</b>	Five character designation used on the commerce Control List (CCL) to identify dual use items for export control purposes.	—
<b>HTS Classification Code: 8542.39.0000</b>	A Harmonized Tariff Schedule (HTS) code developed by the World Customs Organization to classify/define internationally traded goods.	—
<b>Part number Generator</b>	Tool used to create the part number based on desired features.	<a href="https://www.sitime.com/part-number-generator">https://www.sitime.com/part-number-generator</a>
<b>Manufacturing Notes</b>	Tape & Reel dimension, reflow profile and other manufacturing related info	<a href="https://www.sitime.com/sites/default/files/gated/Manufacturing-Notes-for-SiTime-Products.pdf">https://www.sitime.com/sites/default/files/gated/Manufacturing-Notes-for-SiTime-Products.pdf</a>
<b>Qualification Reports</b>	RoHS report, reliability reports, composition reports	<a href="http://www.sitime.com/support/quality-and-reliability">http://www.sitime.com/support/quality-and-reliability</a>
<b>Performance Reports</b>	Additional performance data such as phase noise, current consumption and jitter for selected frequencies	<a href="http://www.sitime.com/support/performance-measurement-report">http://www.sitime.com/support/performance-measurement-report</a>
<b>Termination Techniques</b>	Termination design recommendations	<a href="http://www.sitime.com/support/application-notes">http://www.sitime.com/support/application-notes</a>
<b>Layout Techniques</b>	Layout recommendations	<a href="http://www.sitime.com/support/application-notes">http://www.sitime.com/support/application-notes</a>
<b>Evaluation Boards</b>	SiT6085/6EB rev. 3.0, SiT6085EB rev.3.1 and SiT6097EB rev. 2.0 Evaluation Boards for Differential Oscillators User Manual	<a href="https://www.sitime.com/support/user-guides">https://www.sitime.com/support/user-guides</a>

## Revision History

**Table 12. Revision History**

Revision	Release Date	Change Summary
1.0	21-Jul-2017	Initial draft
1.03		Corrected max frequency in ordering information table. Added 5.0 x 3.2 package. Added preliminary IPJ numbers for 5032 package. Will be updated after characterization. Corrected minor errors. Added Additional Information Table.
1.04	11-May-2018	Performed minor edits and updated Ordering Information.
1.05	25-Oct-2018	Removed "Contact SiTime" for $\pm 10$ ppm
1.06	17-Aug-2019	Updated package Dimensions Drawings Updated Table 8 Thermal Considerations for 5032 package Updated Table 2 specification for First Year Aging Added 5, 10, and 20 year aging specs Added Evaluation Boards SiT6085EB reference in Additional Information Rearranged layout, added Description, Block Diagram and TOC Tightened LVDS minimum VOD specification Added HTS code Added low-swing LVPECL package code and specifications
1.07	9-Mar-2021	Updated L1 and Dimple Width package dimensions for 3.2 x 2.5 mm package Updated trademarks, hyperlinks and changed rev table date format
1.71	15-Jul-2021	Updated pin direction in package dimensions for 3.2 x 2.5 mm package
1.72	1-Jan-2023	Updated company disclaimer, links, references and icons

**SiTime Corporation**, 5451 Patrick Henry Drive, Santa Clara, CA 95054, USA | **Phone:** +1-408-328-4400 | **Fax:** +1-408-328-4439

© SiTime Corporation 2017-2023. The information contained herein is subject to change at any time without notice. SiTime assumes no responsibility or liability for any loss, damage or defect of a Product which is caused in whole or in part by (i) use of any circuitry other than circuitry embodied in a SiTime product, (ii) misuse or abuse including static discharge, neglect or accident, (iii) unauthorized modification or repairs which have been soldered or altered during assembly and are not capable of being tested by SiTime under its normal test conditions, or (iv) improper installation, storage, handling, warehousing or transportation, or (v) being subjected to unusual physical, thermal, or electrical stress.

**Disclaimer:** SiTime makes no warranty of any kind, express or implied, with regard to this material, and specifically disclaims any and all express or implied warranties, either in fact or by operation of law, statutory or otherwise, including the implied warranties of merchantability and fitness for use or a particular purpose, and any implied warranty arising from course of dealing or usage of trade, as well as any common-law duties relating to accuracy or lack of negligence, with respect to this material, any SiTime product and any product documentation. This product is not suitable or intended to be used in a life support application or component, to operate nuclear facilities, in military or aerospace applications, or in other mission critical applications where human life may be involved or at stake. All sales are made conditioned upon compliance with the critical uses policy set forth below.

### CRITICAL USE EXCLUSION POLICY

BUYER AGREES NOT TO USE SITIME'S PRODUCTS FOR ANY APPLICATION OR IN ANY COMPONENTS: USED IN LIFE SUPPORT DEVICES, TO OPERATE NUCLEAR FACILITIES, FOR MILITARY OR AEROSPACE USE, OR IN OTHER MISSION CRITICAL APPLICATIONS OR COMPONENTS WHERE HUMAN LIFE OR PROPERTY MAY BE AT STAKE.

For aerospace and defense applications, SiTime recommends using only [Endura™ ruggedized products](#).

SiTime owns all rights, title and interest to the intellectual property related to SiTime's products, including any software, firmware, copyright, patent, or trademark. The sale of SiTime products does not convey or imply any license under patent or other rights. SiTime retains the copyright and trademark rights in all documents, catalogs and plans supplied pursuant to or ancillary to the sale of products or services by SiTime. Unless otherwise agreed to in writing by SiTime, any reproduction, modification, translation, compilation, or representation of this material shall be strictly prohibited.



# Mouser Electronics

Authorized Distributor

Click to View Pricing, Inventory, Delivery & Lifecycle Information:

## SiTime:

[SiT9367AC-2B2-33E644.531250G](#) [SiT9367AC-2B2-33E285.000000G](#) [SiT9367AC-2B2-25E622.080000G](#)  
[SiT9367AC-2B2-25E500.000000G](#) [SiT9367AC-2B2-25E644.531250G](#) [SiT9367AC-2E2-33E622.080000X](#) [SiT9367AC-](#)  
[2B2-33E312.500000G](#) [SiT9367AE-4CF-25E500.000000X](#) [SIT9367AI-2B1-25E248.675000](#) [SIT9367AI-2B1-](#)  
[25E249.375000](#) [SIT9367AI-2B1-25E250.075000](#) [SIT9367AI-2B2-33E322.265625G](#)