

Features

- 31 standard frequencies from 25 MHz to 212.5 MHz
- LVPECL and LVDS output signaling types
- 0.6 ps RMS phase jitter (random) over 12 kHz to 20 MHz bandwidth
- Frequency stability as low as ± 10 ppm
- Industrial and extended commercial temperature ranges
- Industry-standard packages: 3.2 x 2.5, 5.0 x 3.2 and 7.0 x 5.0 mm x mm
- For any other frequencies between 1 to 625 MHz, refer to [SiT9121](#) and [SiT9122](#) datasheet

Applications

- 10GB Ethernet, SONET, SATA, SAS, Fibre Channel, PCI-Express
- Telecom, networking, instrumentation, storage, server



INSTANT
SAMPLES



SEARCH
INVENTORY



GREEN
SOLUTIONS



LIFETIME
WARRANTY

Electrical Characteristics

Table 1. Electrical Characteristics

Parameters	Symbol	Min.	Typ.	Max.	Unit	Condition
LVPECL and LVDS, Common Electrical Characteristics						
Supply Voltage	V _{dd}	2.97	3.3	3.63	V	
		2.25	2.5	2.75	V	
		2.25	—	3.63	V	Termination schemes in Figures 1 and 2 - XX ordering code
Output Frequency Range	f	25	—	212.5	MHz	See list of standard frequencies
Frequency Stability	F _{stab}	-10	—	+10	ppm	Inclusive of initial tolerance, operating temperature, rated power supply voltage, and load variations
		-20	—	+20	ppm	
		-25	—	+25	ppm	
		-50	—	+50	ppm	
First Year Aging	F _{aging1}	-2	—	+2	ppm	25°C
10-year Aging	F _{aging10}	-5	—	+5	ppm	25°C
Operating Temperature Range	T _{use}	-40	—	+85	°C	Industrial
		-20	—	+70	°C	Extended Commercial
Input Voltage High	V _{IH}	70%	—	—	V _{dd}	Pin 1, OE or \overline{ST}
Input Voltage Low	V _{IL}	—	—	30%	V _{dd}	Pin 1, OE or \overline{ST}
Input Pull-up Impedance	Z _{in}	—	100	250	k Ω	Pin 1, OE logic high or logic low, or \overline{ST} logic high
		2	—	—	M Ω	Pin 1, \overline{ST} logic low
Start-up Time	T _{start}	—	6	10	ms	Measured from the time V _{dd} reaches its rated minimum value.
Resume Time	T _{resume}	—	6	10	ms	In Standby mode, measured from the time \overline{ST} pin crosses 50% threshold.
Duty Cycle	DC	45	—	55	%	Contact SiTime for tighter duty cycle
LVPECL, DC and AC Characteristics						
Current Consumption	I _{dd}	—	61	69	mA	Excluding Load Termination Current, V _{dd} = 3.3V or 2.5V
OE Disable Supply Current	I _{OE}	—	—	35	mA	OE = Low
Output Disable Leakage Current	I _{leak}	—	—	1	μ A	OE = Low
Standby Current	I _{std}	—	—	100	μ A	\overline{ST} = Low, for all V _{dds}
Maximum Output Current	I _{driver}	—	—	30	mA	Maximum average current drawn from OUT+ or OUT-
Output High Voltage	VOH	V _{dd} -1.1	—	V _{dd} -0.7	V	See Figure 1(a)
Output Low Voltage	VOL	V _{dd} -1.9	—	V _{dd} -1.5	V	See Figure 1(a)
Output Differential Voltage Swing	V _{Swing}	1.2	1.6	2.0	V	See Figure 1(b)
Rise/Fall Time	Tr, Tf	—	300	500	ps	20% to 80%, see Figure 1(a)
OE Enable/Disable Time	T _{oe}	—	—	115	ns	f = 212.5 MHz - For other frequencies, T _{oe} = 100ns + 3 period
RMS Period Jitter	T _{jitt}	—	1.2	1.7	ps	f = 100 MHz, VDD = 3.3V or 2.5V
		—	1.2	1.7	ps	f = 156.25 MHz, VDD = 3.3V or 2.5V
		—	1.2	1.7	ps	f = 212.5 MHz, VDD = 3.3V or 2.5V
RMS Phase Jitter (random)	T _{phj}	—	0.6	0.85	ps	f = 156.25 MHz, Integration bandwidth = 12 kHz to 20 MHz, all V _{dds}

Table 1. Electrical Characteristics (continued)

Parameter	Symbol	Min.	Typ.	Max.	Unit	Condition
LVDS, DC and AC Characteristics						
Current Consumption	I _{dd}	–	47	55	mA	Excluding Load Termination Current, V _{dd} = 3.3V or 2.5V
OE Disable Supply Current	I _{OE}	–	–	35	mA	OE = Low
Differential Output Voltage	V _{OD}	250	350	450	mV	See Figure 2
Output Disable Leakage Current	I _{leak}	–	–	1	μA	OE = Low
Standby Current	I _{std}	–	–	100	μA	\overline{ST} = Low, for all V _{dds}
VOD Magnitude Change	ΔV _{OD}	–	–	50	mV	See Figure 2
Offset Voltage	V _{OS}	1.125	1.2	1.375	V	See Figure 2
VOS Magnitude Change	ΔV _{OS}	–	–	50	mV	See Figure 2
Rise/Fall Time	T _r , T _f	–	495	600	ps	20% to 80%, see Figure 2
OE Enable/Disable Time	T _{oe}	–	–	115	ns	f = 212.5 MHz - For other frequencies, T _{oe} = 100ns + 3 period
RMS Period Jitter	T _{jitt}	–	1.2	1.7	ps	f = 100 MHz, V _{DD} = 3.3V or 2.5V
		–	1.2	1.7	ps	f = 156.25 MHz, V _{DD} = 3.3V or 2.5V
		–	1.2	1.7	ps	f = 212.5 MHz, V _{DD} = 3.3V or 2.5V
RMS Phase Jitter (random)	T _{phj}	–	0.6	0.85	ps	f = 156.25 MHz, Integration bandwidth = 12 kHz to 20 MHz, all V _{dds}

Table 2. Pin Description

Pin	Map	Functionality
1	NC	NA No Connect; Leave it floating or connect to GND for better heat dissipation
	OE	Input H or Open: specified frequency output L: output is high impedance
	\overline{ST}	Input H or Open: specified frequency output L: Device goes to sleep mode. Supply current reduces to I _{std} .
2	NC	NA No Connect; Leave it floating or connect to GND for better heat dissipation
3	GND	Power VDD Power Supply Ground
4	OUT+	Output Oscillator output
5	OUT-	Output Complementary oscillator output
6	VDD	Power Power supply voltage

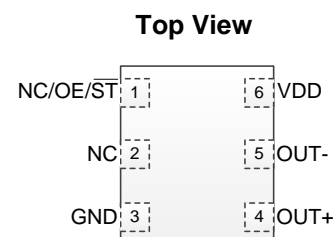

Figure 1. Pin Assignments

Table 3. Absolute Maximum Limits

Attempted operation outside the absolute maximum ratings of the part may cause permanent damage to the part. Actual performance of the IC is only guaranteed within the operational specifications, not at absolute maximum ratings.

Parameter	Min.	Max.	Unit
Storage Temperature	-65	150	°C
VDD	-0.5	4	V
Electrostatic Discharge (HBM)	–	2000	V
Soldering Temperature (follow standard Pb free soldering guidelines)	–	260	°C

Table 4. Thermal Consideration^[1]

Package	θ_{JA} , 4 Layer Board (°C/W)	θ_{JC} , Bottom (°C/W)
7050, 6-pin	142	27
5032, 6-pin	97	20
3225, 6-pin	109	20

Note:

1. Refer to JESD51-7 for θ_{JA} and θ_{JC} definitions, and reference layout used to determine the θ_{JA} and θ_{JC} values in the above table.

Table 5. Maximum Operating Junction Temperature^[2]

Max Operating Temperature (ambient)	Maximum Operating Junction Temperature
70°C	90°C
85°C	105°C

Note:

2. Datasheet specifications are not guaranteed if junction temperature exceeds the maximum operating junction temperature.

Table 6. Environmental Compliance

Parameter	Condition/Test Method
Mechanical Shock	MIL-STD-883F, Method 2002
Mechanical Vibration	MIL-STD-883F, Method 2007
Temperature Cycle	JESD22, Method A104
Solderability	MIL-STD-883F, Method 2003
Moisture Sensitivity Level	MSL1 @ 260°C

Waveform Diagrams

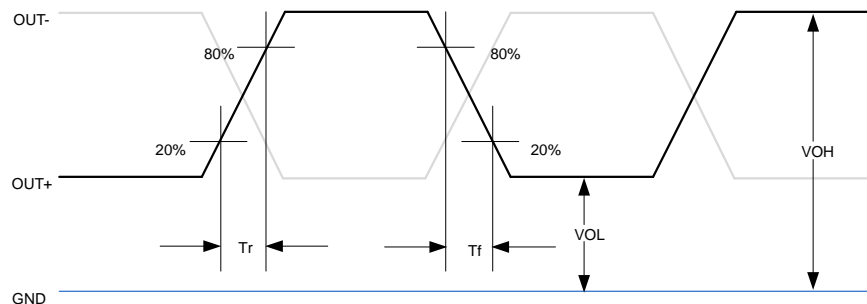


Figure 1(a). LVPECL Voltage Levels per Differential Pin (OUT+/OUT-)

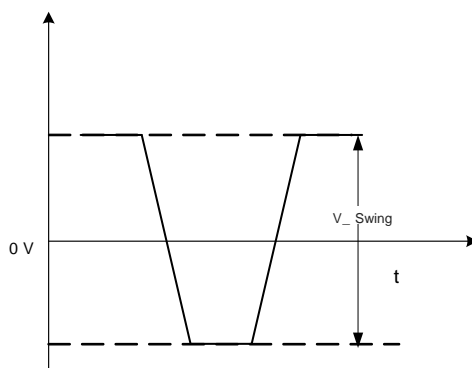


Figure 1(b). LVPECL Voltage Levels Across Differential Pair

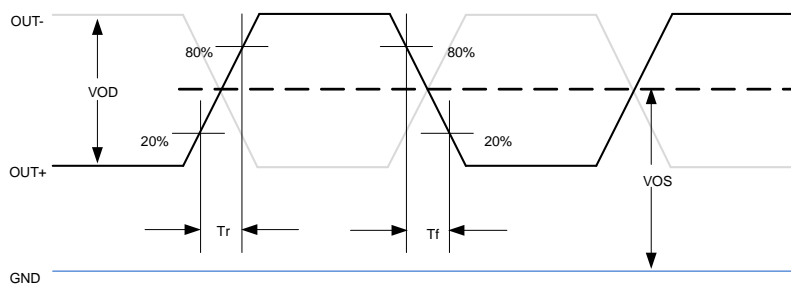


Figure 2. LVDS Voltage Levels per Differential Pin (OUT+/OUT-)

Termination Diagrams

LVPECL

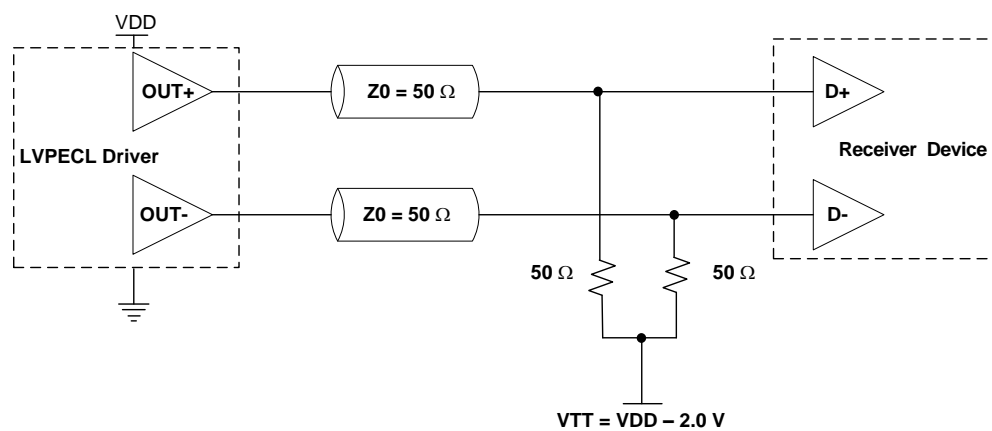


Figure 3. LVPECL Typical Termination

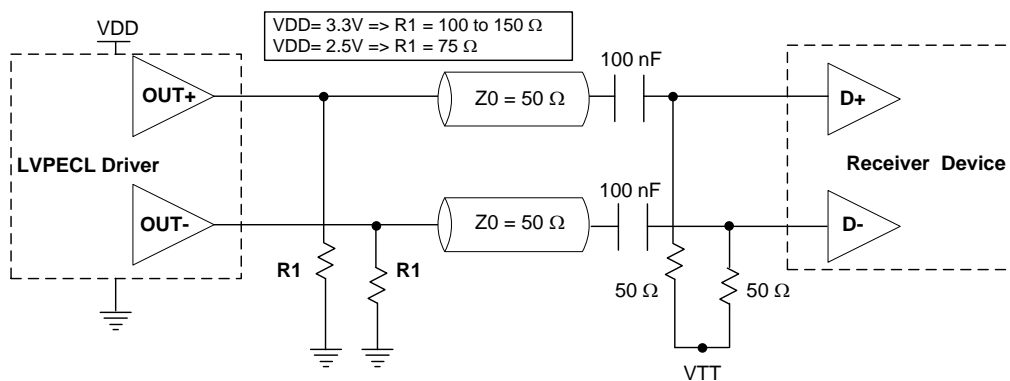


Figure 4. LVPECL AC Coupled Termination

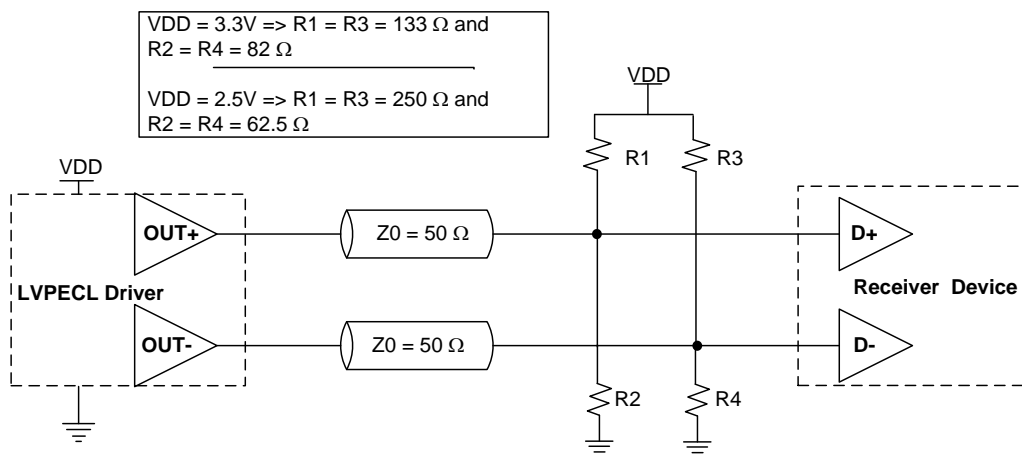
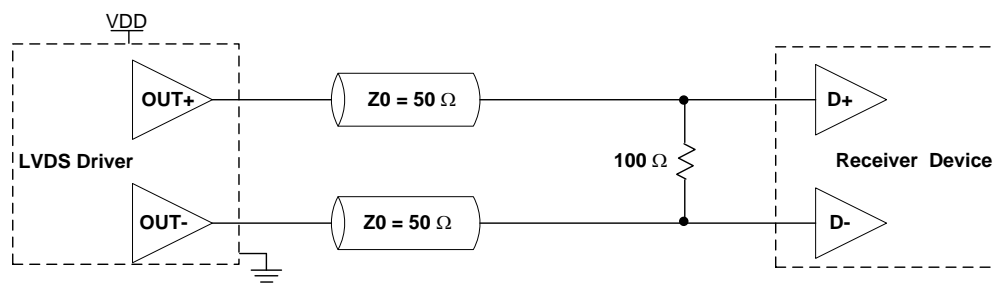


Figure 5. LVPECL with Thevenin Typical Termination

Termination Diagrams (continued)**LVDS****Figure 6. LVDS Single Termination (Load Terminated)**

Dimensions and Patterns

Package Size – Dimensions (Unit: mm) ^[3]	Recommended Land Pattern (Unit: mm) ^[4]
<p>3.2 x 2.5 x 0.75 mm</p>	
<p>5.0 x 3.2 x 0.75 mm</p>	
<p>7.0 x 5.0 x 0.90 mm</p>	

Notes:

- Top Marking: Y denotes manufacturing origin and XXXX denotes manufacturing lot number. The value of "Y" will depend on the assembly location of the device.
- A capacitor of value 0.1 μ F between Vdd and GND is recommended.

Ordering Information

SiT9120AC-1C2-33E125.000000T

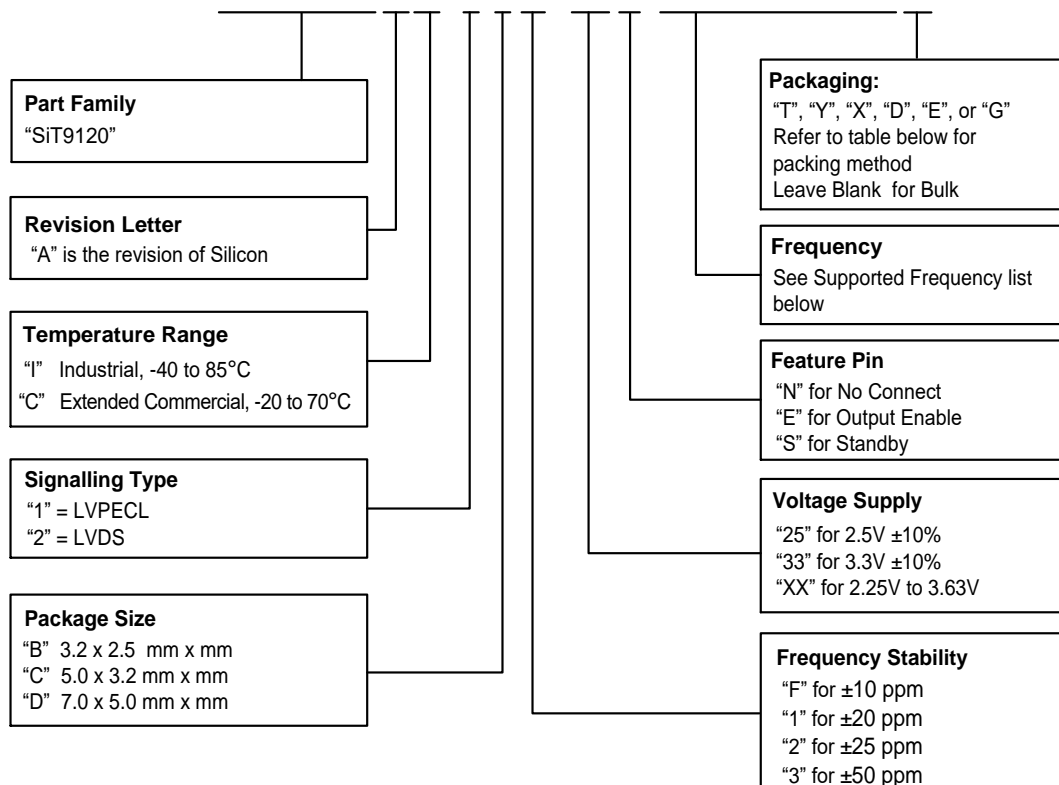


Table 7. List of Supported Frequencies

25.000000 MHz	50.000000 MHz	74.175824 MHz	74.250000 MHz	75.000000 MHz	98.304000 MHz	100.000000 MHz	106.250000 MHz
125.000000 MHz	133.000000 MHz	133.300000 MHz	133.330000 MHz	133.333000 MHz	133.333300 MHz	133.333330 MHz	133.333333 MHz
148.351648 MHz	148.500000 MHz	150.000000 MHz	155.520000 MHz	156.250000 MHz	161.132800 MHz	166.000000 MHz	166.600000 MHz
166.660000 MHz	166.666000 MHz	166.666600 MHz	166.666660 MHz	166.666666 MHz	200.000000 MHz	212.500000 MHz	

Table 8. Ordering Codes for Supported Tape & Reel Packing Method

Device Size	8 mm T&R (3ku)	8 mm T&R (1ku)	8 mm T&R (250u)	12 mm T&R (3ku)	12 mm T&R (1ku)	12 mm T&R (250u)	16 mm T&R (3ku)	16 mm T&R (1ku)	16 mm T&R (250u)
7.0 x 5.0 mm	–	–	–	–	–	–	T	Y	X
5.0 x 3.2 mm	–	–	–	T	Y	X	–	–	–
3.2 x 2.5 mm	D	E	G	T	Y	X	–	–	–

Table 9. Revision History

Revisions	Release Date	Change Summary
1.01	02/20/2013	Original
1.02	11/23/2013	Added input specifications, LVPECL/LVDS waveforms, packaging T&R options
1.03	02/06/2014	Added 8mm T&R option
1.04	03/03/2014	Added ± 10 ppm
1.05	07/23/2014	Include Thermal Consideration Table
1.06	10/03/2014	Modified Thermal Consideration values
1.07	01/09/2017	Included Maximum Operating Junction Temperature Table Added Thermal Consideration Notes to Table Updated logo and company address, other page layout changes
1.08	06/25/2019	Added No Connect feature to Pin 1

SiTime Corporation, 5451 Patrick Henry Drive, Santa Clara, CA 95054, USA | Phone: +1-408-328-4400 | Fax: +1-408-328-4439

© SiTime Corporation 2013-2019. The information contained herein is subject to change at any time without notice. SiTime assumes no responsibility or liability for any loss, damage or defect of a Product which is caused in whole or in part by (i) use of any circuitry other than circuitry embodied in a SiTime product, (ii) misuse or abuse including static discharge, neglect or accident, (iii) unauthorized modification or repairs which have been soldered or altered during assembly and are not capable of being tested by SiTime under its normal test conditions, or (iv) improper installation, storage, handling, warehousing or transportation, or (v) being subjected to unusual physical, thermal, or electrical stress.

Disclaimer: SiTime makes no warranty of any kind, express or implied, with regard to this material, and specifically disclaims any and all express or implied warranties, either in fact or by operation of law, statutory or otherwise, including the implied warranties of merchantability and fitness for use or a particular purpose, and any implied warranty arising from course of dealing or usage of trade, as well as any common-law duties relating to accuracy or lack of negligence, with respect to this material, any SiTime product and any product documentation. Products sold by SiTime are not suitable or intended to be used in a life support application or component, to operate nuclear facilities, or in other mission critical applications where human life may be involved or at stake. All sales are made conditioned upon compliance with the critical uses policy set forth below.

CRITICAL USE EXCLUSION POLICY

BUYER AGREES NOT TO USE SITIME'S PRODUCTS FOR ANY APPLICATION OR IN ANY COMPONENTS USED IN LIFE SUPPORT DEVICES OR TO OPERATE NUCLEAR FACILITIES OR FOR USE IN OTHER MISSION-CRITICAL APPLICATIONS OR COMPONENTS WHERE HUMAN LIFE OR PROPERTY MAY BE AT STAKE.

SiTime owns all rights, title and interest to the intellectual property related to SiTime's products, including any software, firmware, copyright, patent, or trademark. The sale of SiTime products does not convey or imply any license under patent or other rights. SiTime retains the copyright and trademark rights in all documents, catalogs and plans supplied pursuant to or ancillary to the sale of products or services by SiTime. Unless otherwise agreed to in writing by SiTime, any reproduction, modification, translation, compilation, or representation of this material shall be strictly prohibited.

Supplemental Information

The Supplemental Information section is not part of the datasheet and is for informational purposes only.

Best Reliability

Silicon is inherently more reliable than quartz. Unlike quartz suppliers, SiTime has in-house MEMS and analog CMOS expertise, which allows SiTime to develop the most reliable products. Figure 1 shows a comparison with quartz technology.

Why is SiTime Best in Class:

- SiTime's MEMS resonators are vacuum sealed using an advanced EpiSeal™ process, which eliminates foreign particles and improves long term aging and reliability
- World-class MEMS and CMOS design expertise

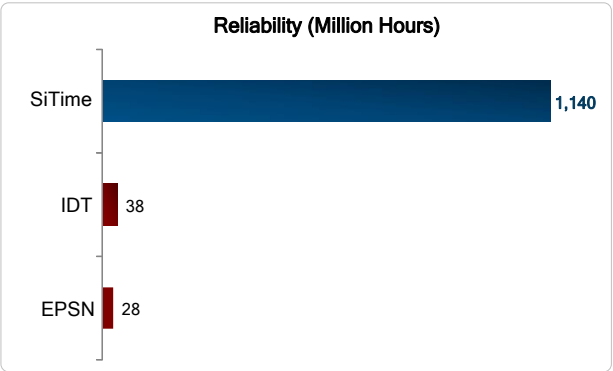


Figure 1. Reliability Comparison^[1]

Best Aging

Unlike quartz, MEMS oscillators have excellent long term aging performance which is why every new SiTime product specifies 10-year aging. A comparison is shown in Figure 2.

Why is SiTime Best in Class:

- SiTime's MEMS resonators are vacuum sealed using an advanced EpiSeal™ process, which eliminates foreign particles and improves long term aging and reliability
- Inherently better immunity of electrostatically driven MEMS resonator

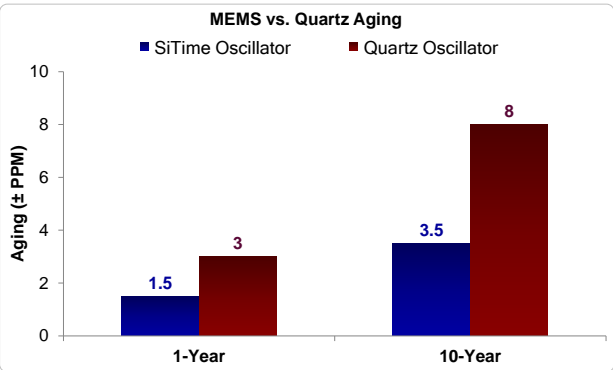


Figure 2. Aging Comparison^[2]

Best Electro Magnetic Susceptibility (EMS)

SiTime's oscillators in plastic packages are up to 54 times more immune to external electromagnetic fields than quartz oscillators as shown in Figure 3.

Why is SiTime Best in Class:

- Internal differential architecture for best common mode noise rejection
- Electrostatically driven MEMS resonator is more immune to EMS

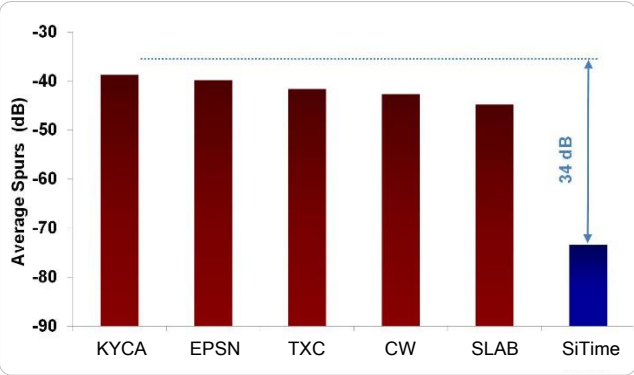


Figure 3. Electro Magnetic Susceptibility (EMS)^[3]

Best Power Supply Noise Rejection

SiTime's MEMS oscillators are more resilient against noise on the power supply. A comparison is shown in Figure 4.

Why is SiTime Best in Class:

- On-chip regulators and internal differential architecture for common mode noise rejection
- MEMS resonator is paired with advanced analog CMOS IC

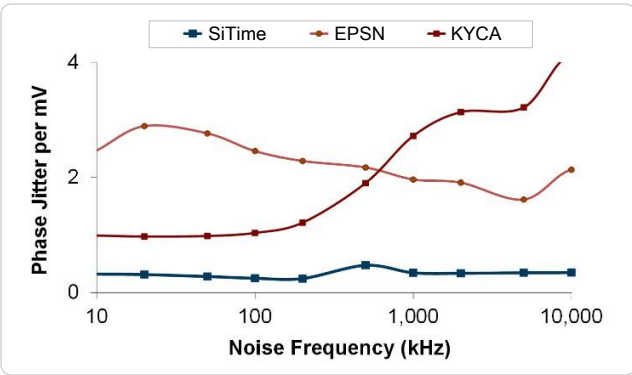


Figure 4. Power Supply Noise Rejection^[4]

Best Vibration Robustness

High-vibration environments are all around us. All electronics, from handheld devices to enterprise servers and storage systems are subject to vibration. Figure 5 shows a comparison of vibration robustness.

Why is SiTime Best in Class:

- The moving mass of SiTime's MEMS resonators is up to 3000 times smaller than quartz
- Center-anchored MEMS resonator is the most robust design

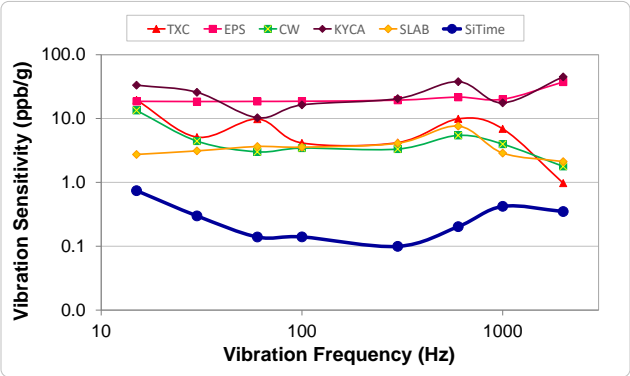


Figure 5. Vibration Robustness^[5]

Best Shock Robustness

SiTime's oscillators can withstand at least 50,000 g shock. They all maintain their electrical performance in operation during shock events. A comparison with quartz devices is shown in Figure 6.

Why is SiTime Best in Class:

- The moving mass of SiTime's MEMS resonators is up to 3000 times smaller than quartz
- Center-anchored MEMS resonator is the most robust design

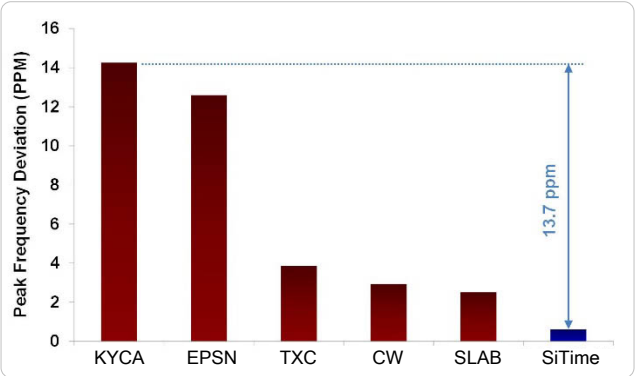


Figure 6. Shock Robustness^[6]

Figure labels:

- TXC = TXC
- Epson = EPSN
- Connor Winfield = CW
- Kyocera = KYCA
- SiLabs = SLAB
- SiTime = EpiSeal MEMS

Notes:

1. Data source: Reliability documents of named companies.
2. Data source: SiTime and quartz oscillator devices datasheets.
3. Test conditions for Electro Magnetic Susceptibility (EMS):
 - According to IEC EN61000-4.3 (Electromagnetic compatibility standard)
 - Field strength: 3V/m
 - Radiated signal modulation: AM 1 kHz at 80% depth
 - Carrier frequency scan: 80 MHz – 1 GHz in 1% steps
 - Antenna polarization: Vertical
 - DUT position: Center aligned to antenna

Devices used in this test:

Label	Manufacturer	Part Number	Technology
EpiSeal MEMS	SiTime	SiT9120AC-1D2-33E156.250000	MEMS + PLL
EPSN	Epson	EG-2102CA156.2500M-PHPAL3	Quartz, SAW
TXC	TXC	BB-156.250MBE-T	Quartz, 3 rd Overtone
CW	Conner Winfield	P123-156.25M	Quartz, 3 rd Overtone
KYCA	AVX Kyocera	KC7050T156.250P30E00	Quartz, SAW
SLAB	SiLab	590AB-BDG	Quartz, 3 rd Overtone + PLL

4. 50 mV pk-pk Sinusoidal voltage.

Devices used in this test:

Label	Manufacturer	Part Number	Technology
EpiSeal MEMS	SiTime	SiT8208AI-33-33E-25.000000	MEMS + PLL
NDK	NDK	NZ2523SB-25.6M	Quartz
KYCA	AVX Kyocera	KC2016B25M0C1GE00	Quartz
EPSN	Epson	SG-310SCF-25M0-MB3	Quartz

5. Devices used in this test:
same as EMS test stated in Note 3.
6. Test conditions for shock test:
 - MIL-STD-883F Method 2002
 - Condition A: half sine wave shock pulse, 500-g, 1ms
 - Continuous frequency measurement in 100 μ s gate time for 10 seconds

Devices used in this test:

same as EMS test stated in Note 3.

7. Additional data, including setup and detailed results, is available upon request to qualified customer. Please contact productsupport@sitime.com.

Mouser Electronics

Authorized Distributor

Click to View Pricing, Inventory, Delivery & Lifecycle Information:

[SiTime:](#)

[SIT9120AI-2C1-25E156.250000X](#) [SIT9120AI-2C2-25E200.000000X](#) [SiT9120AI-2D3-33E156.250000X](#) [SiT9120AI-2C3-25E100.000000X](#) [SIT9120AI-2CF-25E200.000000X](#) [SIT9120AI-2D3-33E200.000000X](#) [SIT9120AI-2C2-33E100.0000X](#) [SIT9120AI-2C3-33E100.000000X](#) [SIT9120AI-2C3-33E125.000000X](#) [SIT9120AI-2C2-25E125.000000X](#) [SIT9120AI-2C3-33E200.000000X](#) [SIT9120AI-2CF-25E100.000000X](#) [SiT9120AI-2B3-XXE100.000000G](#) [SIT9120AI-2C1-25E200.000000X](#) [SIT9120AI-2D3-25E200.000000X](#) [SiT9120AI-2C2-33E100.000000X](#) [SiT9120AC-1D3-33E25.000000X](#) [SiT9120AI-2BF-25E25.000000G](#) [SIT9120AI-2BF-33E125.000000G](#) [SiT9120AI-2B1-33E100.000000E](#) [SiT9120AI-2B1-33E50.000000E](#) [SIT9120AI-2DF-25E125.000000X](#) [SiT9120AC-2C3-33E25.000000X](#) [SIT9120AI-2D3-33E100.000000X](#) [SiT9120AI-2C2-25S125.000000X](#) [SIT9120AI-2C2-33E200.000000X](#) [SiT9120AC-1D2-33E50.000000X](#) [SiT9120AC-2D3-25E156.250000X](#) [SIT9120AC-2D3-33E106.250000X](#) [SiT9120AC-1D3-33E200.000000X](#) [SiT9120AI-1D2-33E125.000000X](#) [SIT9120AI-1D2-33E150.000000X](#) [SIT9120AC-2C2-25E100.000000X](#) [SiT9120AC-1C3-25E156.250000X](#) [SiT9120AI-2C2-33E125.000000X](#) [SiT9120AI-2C2-33E148.500000X](#) [SiT9120AI-1C2-33E150.000000X](#) [SIT9120AC-1B2-25E100.000000x](#) [SIT9120AC-1B2-25E125.000000x](#) [SIT9120AC-1B2-33E100.000000x](#) [SIT9120AC-1B2-33E125.000000x](#) [SIT9120AC-1B2-33E133.333000x](#) [SIT9120AC-1B2-33E156.250000x](#) [SIT9120AC-2B1-XXE50.000000x](#) [SIT9120AC-2B3-25E150.000000x](#) [SIT9120AC-2C2-25E150.000000x](#) [SIT9120AC-2C2-33E125.000000x](#) [SIT9120AC-2D2-33E100.000000x](#) [SIT9120AC-2D3-33E166.666666x](#) [SIT9120AI-1B2-33E155.520000x](#) [SIT9120AI-1C3-33E133.333000x](#) [SIT9120AI-1C3-33E150.000000x](#) [SIT9120AI-1D3-33E156.250000x](#) [SIT9120AI-2B2-25E50.000000x](#) [SIT9120AI-2B2-33E156.250000x](#) [SIT9120AI-2B2-XXE100.000000x](#) [SIT9120AI-2B3-25E125.000000x](#) [SIT9120AI-2B3-XXE100.000000x](#) [SIT9120AI-2C2-33E156.250000x](#) [SIT9120AI-2C3-25E212.500000x](#) [SIT9120AC-1B3-25E100.000000x](#) [SIT9120AI-2BF-33E100.000000G](#) [SIT9120AI-2BF-33E100.000000Y](#) [SIT9120AI-2DF-33E125.000000Y](#) [SIT9120AI-2BF-25E156.250000G](#) [SIT9120AI-2BF-33E100.000000E](#) [SIT9120AI-2BF-33E106.250000G](#) [SiT9120AI-2BF-33E25.000000G](#) [SiT9120AI-2DF-33E125.000000X](#) [SiT9120AI-2DF-33E200.000000X](#) [SiT9120AC-2BF-33E100.000000Y](#) [SIT9120AI-2BF-33E100.000000T](#) [SiT9120AC-2BF-25E200.000000E](#) [SiT9120AC-2BF-33E100.000000D](#) [SIT9120AI-2BF-25E25.000000D](#) [SIT9120AI-2BF-XXE200.000000G](#) [SiT9120AI-2B1-33E50.000000G](#) [SIT9120AI-2B2-25E148.500000Y](#) [SIT9120AI-2B3-25E125.000000Y](#) [SiT9120AI-2C1-33E125.000000T](#) [SIT9120AI-2C2-25E125.000000Y](#) [SIT9120AI-1C2-](#)

25E125.000000Y SiT9120AI-2C2-33E100.000000Y SiT9120AI-2C2-33E100.000000T SiT9120AI-2C2-
33E125.000000Y SiT9120AI-2C2-33E156.250000Y SiT9120AI-2C2-33E200.000000Y SiT9120AI-2C2-
33E200.000000T SiT9120AI-1C2-33S50.000000Y SiT9120AI-2C3-25E100.000000Y SiT9120AI-2C3-33E100.000000Y
SiT9120AI-2C3-33E125.000000Y SiT9120AI-2C3-33E212.500000Y SiT9120AI-2C3-33E212.500000T SiT9120AI-
2D1-33E106.250000X SiT9120AI-2D2-XXE100.000000Y SiT9120AI-2D2-XXE156.250000Y SiT9120AI-2D2-
25E125.000000Y SiT9120AI-2D2-25E156.250000Y SiT9120AI-2D2-25E156.250000X