

UG613: MGM260P Module Explorer Kit

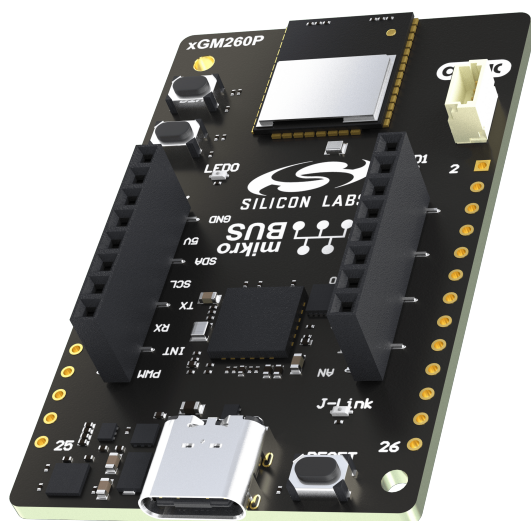
User's Guide



The MGM260P Module Explorer Kit is an ultra-low cost, small form factor development and evaluation platform for the MGM260P Wireless Gecko Module.

The MGM260P Module Explorer Kit is focused on rapid prototyping and concept creation of IoT applications. It is designed around the MGM260P Module, which is an ideal device family for developing energy-friendly connected IoT applications.

The kit features a USB interface, an on-board SEGGER J-Link debugger, two user-LEDs and two buttons, and support for hardware add-on boards via a mikroBus socket and a Qwiic connector. The hardware add-on support allows developers to create and prototype applications using a virtually endless combination of off-the-shelf boards from MIK-ROE, SparkFun, Adafruit, and Seeed Studio.



TARGET DEVICE

- MGM260P Wireless Gecko Module (MGM260PD32VNA2R)
- Built-in Antenna
- 32-bit ARM® Cortex®-M33 with 80 MHz maximum operating frequency
- 3200 kB flash and 512 kB RAM

KIT FEATURES

- 2x User LEDs and push buttons
- 26-pin 2.54 mm breakout pads
- mikroBUS™ socket
- Qwiic® connector
- SEGGER J-Link on-board debugger
- Virtual COM port
- Packet Trace Interface (PTI)
- USB-powered

SOFTWARE SUPPORT

- Simplicity Studio™

ORDERING INFORMATION

- MGM260P-EK2713A

Table of Contents

1. Introduction	3
1.1 Kit Contents	3
1.2 Getting Started	3
1.3 Hardware Content	3
1.4 Kit Hardware Layout	4
2. Specifications	5
2.1 Recommended Operating Conditions	5
2.2 Current Consumption	5
3. Hardware	6
3.1 Block Diagram	6
3.2 Power Supply	7
3.3 MGM260P Reset	7
3.4 Push Button and LED.	7
3.5 On-board Debugger	8
3.6 Connectors	9
3.6.1 Breakout Pads	10
3.6.2 Mini Simplicity Connector	11
3.6.3 MikroBUS Socket	12
3.6.4 Qwiic Connector	13
3.6.5 Debug USB Type-C Connector	13
4. Debugging	14
4.1 On-board Debugger	14
4.2 Virtual COM Port	14
5. Schematics, Assembly Drawings, and BOM	15
6. Kit Revision History and Errata	16
6.1 Revision History	16
6.2 Errata	16
7. Board Revision History and Errata	17
7.1 Revision History	17
7.2 Errata	17
8. Document Revision History	18

1. Introduction

The MGM260P Module Explorer Kit has been designed to inspire customers to make IoT devices with the Silicon Labs MGM260P Wireless Gecko Module. The kit includes a mikroBUS™ socket and Qwiic® connector, allowing users to add features to the kit with a large selection of off-the-shelf boards.

Programming the MGM260P Module Explorer Kit is easily done using a USB Type-C cable and the on-board J-Link debugger. A USB virtual COM port provides a serial connection to the target application, and the Packet Trace Interface (PTI) offers invaluable debug information about transmitted and received packets in wireless links. The MGM260P Module Explorer Kit is supported in Simplicity Studio™ and a Board Support Package (BSP) is provided to give application developers a flying start.

External hardware is connected to the MGM260P Module Explorer Kit by using the 26 breakout pads which present peripherals from the MGM260P Wireless Gecko Module such as I²C, SPI, UART, and GPIOs. The mikroBUS socket allows inserting mikroBUS add-on boards which interface with the MGM260P through SPI, UART, or I²C. The Qwiic connector can be used to connect hardware from the Qwiic Connect System through I²C.

1.1 Kit Contents

The following items are included in the box:

- 1x MGM260P Module Explorer Kit board (BRD2713A)

1.2 Getting Started

Refer to the Silicon Labs webpage, <https://www.silabs.com/dev-tools>, for detailed instructions on how to get started with your new MGM260P Module Explorer Kit.

1.3 Hardware Content

The following key hardware elements are included on the MGM260P Module Explorer Kit:

- MGM260P Wireless Gecko Module with 80 MHz operating frequency, 3200 kB flash, and 512 kB RAM
- Two LEDs and two push buttons
- On-board SEGGER J-Link debugger for easy programming and debugging, which includes a USB virtual COM port and Packet Trace Interface (PTI)
- MikroBUS socket for connecting click boards and other mikroBUS add-on boards
- Qwiic connector for connecting Qwiic Connect System hardware
- Breakout pads for GPIO access and connection to external hardware
- Reset button

1.4 Kit Hardware Layout

MGM260P Module Explorer Kit layout is shown below.

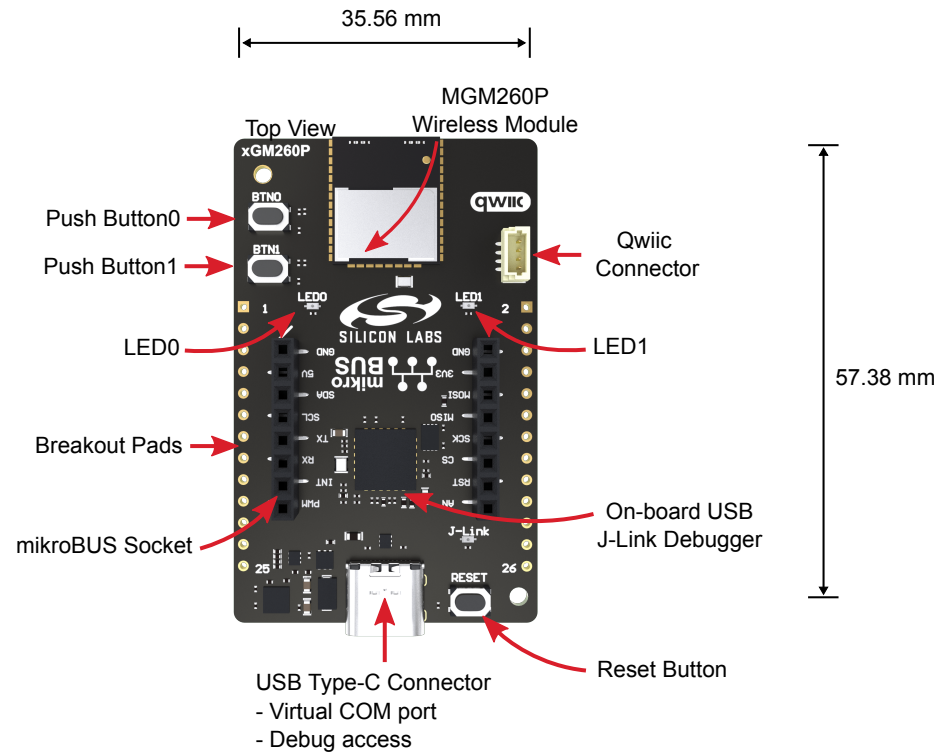


Figure 1.1. MGM260P Module Explorer Kit Hardware Layout

2. Specifications

2.1 Recommended Operating Conditions

Table 2.1. Recommended Operating Conditions

Parameter	Symbol	Min	Typ	Max	Unit
USB Supply Input Voltage	V_{USB}	—	+5.0	—	V
Supply Input Voltage (VMCU supplied externally)	V_{VMCU}	—	+3.3	—	V

2.2 Current Consumption

The operating current of the board greatly depends on the application and the amount of external hardware connected. The table below attempts to give some indication of typical current consumptions for the MGM260P and the on-board debugger. Note that the numbers are taken from the datasheets for the devices. For a full overview of the conditions that apply for a specific number from a datasheet, the reader is encouraged to read the specific datasheet.

Table 2.2. Current Consumption

Parameter	Symbol	Condition	Typ	Unit
MGM260P Current Consumption ¹	I_{MGM260P}	MCU current consumption in EM0 mode with all peripherals disabled (module supply voltage = 3.0 V, VSCALE2, 40 MHz crystal, CPU running Prime from flash at 25 °C)	59.4	μA/MHz
		Radio system current consumption in receive mode, active packet reception (VDD = 3.0 V, MCU in EM1 and all MCU peripherals disabled, HCLK = 40 MHz, 1Mbit/s, 2GFSK, f = 2.4 GHz at 25 °C)	5.7	mA
		Radio system current consumption in transmit mode (VDD = 3.0 V, MCU in EM1 and all MCU peripherals disabled, HCLK = 40 MHz, f = 2.4 GHz, CW, 20 dBm output power at 25 °C)	162	mA
On-board Debugger Sleep Current Consumption ²	I_{DBG}	On-board debugger current consumption when USB cable is not inserted (EFM32GG12 EM4S mode current consumption)	80	nA

¹ From MGM260P datasheet

² From EFM32GG12 datasheet

3. Hardware

The core of the MGM260P Module Explorer Kit is the MGM260P Wireless Gecko Module. Refer to section [1.4 Kit Hardware Layout](#) for placement and layout of the hardware components.

3.1 Block Diagram

An overview of the MGM260P Module Explorer Kit is illustrated in the figure below.

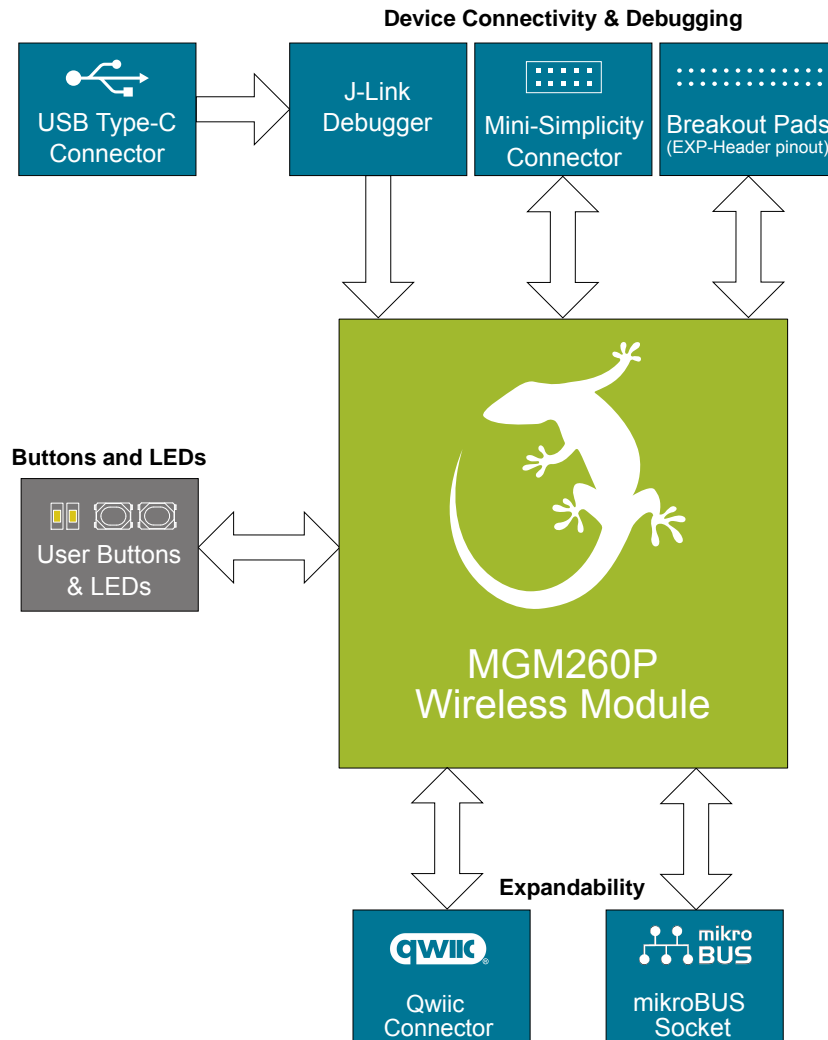


Figure 3.1. Kit Block Diagram

3.2 Power Supply

The kit is powered by the debug USB cable as illustrated in the figure below.

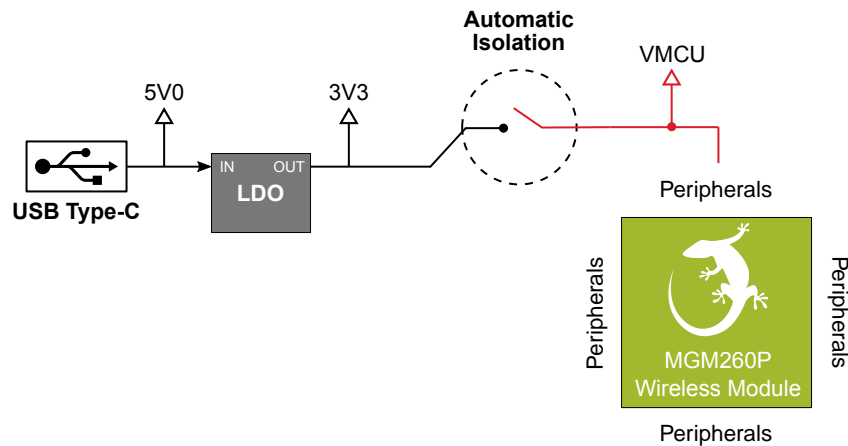


Figure 3.2. MGM260P Module Explorer Kit Power Topology

The 5 V power net on the USB bus is regulated down to 3.3 V using a low-dropout regulator (LDO). An automatic isolation circuit isolates the LDO when the USB cable is not plugged in.

Power can be injected externally on the VMCU net if the USB cable is removed and no other power sources are present on the kit. Failure to follow this guideline can cause power conflicts and damage the LDO.

3.3 MGM260P Reset

The MGM260P can be reset by a few different sources:

- A user pressing the RESET button.
- The on-board debugger pulling the #RESET pin low.

3.4 Push Button and LED

The kit has two user push buttons, marked BTN0 and BTN1, that are connected to GPIOs on the MGM260P. The buttons are connected to pin PB01 and PB00, respectively, and they are debounced by an RC filter with a time constant of 1 ms. The logic state of a button is high while that button is not being pressed, and low when it is pressed.

The kit also features two yellow LEDs, marked LED0 and LED1, that are controlled by GPIO pins on the MGM260P. The LEDs are connected to pin PA09 and PC09, respectively, in an active-high configuration.

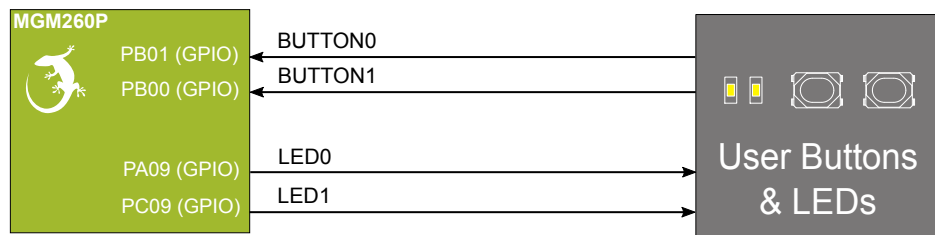


Figure 3.3. Buttons and LEDs

3.5 On-board Debugger

The MGM260P Module Explorer Kit contains a microcontroller separate from the MGM260P Wireless Gecko Module that provides the user with an on-board J-Link debugger through the USB Type-C port. This microcontroller is referred to as the "on-board debugger", and is not programmable by the user. When the USB cable is removed, the on-board debugger goes into a very low power shutoff mode (EM4S), consuming around 80 nA typically (from EFM32GG12 datasheet).

In addition to providing code download and debug features, the on-board debugger also presents a virtual COM port for general purpose application serial data transfer.

The figure below shows the connections between the target MGM260P device and the on-board debugger.

Refer to section 4. [Debugging](#) for more details on debugging.

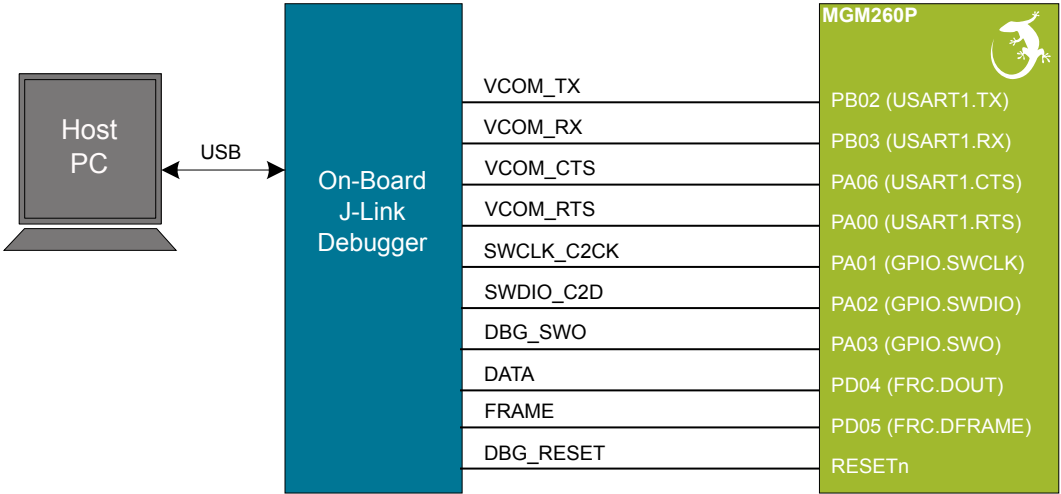


Figure 3.4. On-Board Debugger Connections

3.6 Connectors

The MGM260P Module Explorer Kit features a USB Type-C connector, 26 breakout pads, a Mini Simplicity connector (not mounted), a mikroBUS connector for connecting mikroBUS add-on boards, and a Qwiic connector for connecting Qwiic Connect System hardware. The Qwiic connector, mikroBUS socket, and USB Type-C connector are located on the top side of the board. The breakout header can be placed on either side of the board based on user preference. The Mini Simplicity connector can be placed on the bottom side of the board. Their placement and pinout are shown in the figure below. For additional information on the connectors, see the following sub chapters.

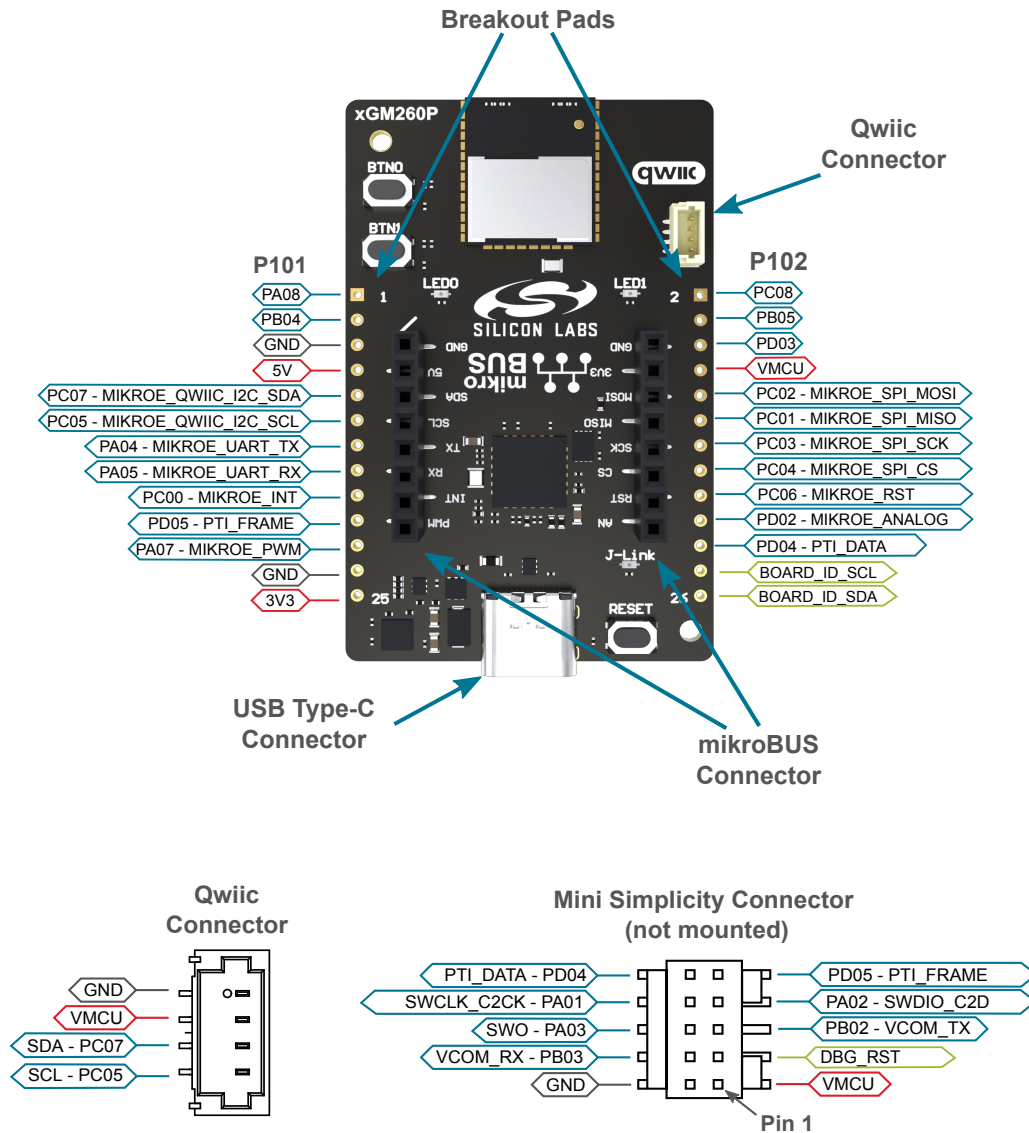


Figure 3.5. MGM260P Module Explorer Kit Connectors

3.6.1 Breakout Pads

Twenty-six breakout pads are provided and allow connection of external peripherals. There are 13 pads on the left side of the board, and 13 pads on the right. The breakout pads contain a number of I/O pins that can be used with most of the MGM260P Wireless Gecko Module's features. Additionally, the VMCU (main board power rail), 3V3 (LDO regulator output), and 5V power rails are also exposed on the pads.

The pin-routing on the Wireless Gecko Module is very flexible, so most peripherals can be routed to any pin. However, pins may be shared between the breakout pads and other functions on the MGM260P Module Explorer Kit. The table below includes an overview of the breakout pads and functionality that is shared with the kit.

Table 3.1. Breakout Pads Pinout

Pin	Connection	Shared Feature	Peripheral Mapping
Left-side Breakout Pins			
1	PA08	—	GPIO
3	PB04	—	GPIO
5	GND	Ground	
7	5V	Board USB voltage	
9	PC07	QWIIC_I2C_SDA, MIKROE_I2C_SDA	I2C_SDA
11	PC05	QWIIC_I2C_SCL, MIKROE_I2C_SCL	I2C_SCL
13	PA04	MIKROE_TX	UART_TX
15	PA05	MIKROE_RX	UART_RX
17	PC00	MIKROE_INT	EXT_INT
19	PD05	PTI_FRAME	PTI_FRAME
21	PA07	MIKROE_PWM	PWM
23	GND	Ground	
25	3V3	Board controller supply	
Right-side Breakout Pins			
2	PC08	—	GPIO
4	PB05	—	GPIO
6	PD03	—	GPIO
8	VMCU	MGM260P voltage domain	
10	PC02	MIKROE_MOSI	SPI_MOSI
12	PC01	MIKROE_MISO	SPI_MISO
14	PC03	MIKROE_SCK	SPI_SCLK
16	PC04	MIKROE_CS	SPI_CS
18	PC06	MIKROE_RST	GPIO
20	PD02	MIKROE_AN	AIN
22	PD04	PTI_DATA	PTI_DATA
24	BOARD_ID_SCL	Connected to Board Controller for identification of add-on boards.	
26	BOARD_ID_SDA	Connected to Board Controller for identification of add-on boards.	

3.6.2 Mini Simplicity Connector

The Mini Simplicity Connector (not mounted) is a 10-pin, 1.27 mm pitch connector that allows the use of an external debugger such as the one found on a Silicon Labs Wireless Starter Kit mainboard. The pinout of the connector on the board is described in the table below with the names being referenced from the MGM260P.

Table 3.2. Mini Simplicity Connector Pin Descriptions

Pin number	Function	Connection	Description
1	AEM	VMCU	Target voltage on the debugged application. May be supplied and monitored by the AEM on an external debugger.
2	GND	GND	Ground
3	RST	RESET	MGM260P reset
4	VCOM_RX	PB03	Virtual COM Rx
5	VCOM_TX	PB02	Virtual COM Tx
6	SWO	PA03	Serial Wire Output
7	SWDIO	PA02	Serial Wire Data
8	SWCLK	PA01	Serial Wire Clock
9	PTI_FRAME	PD05	Packet Trace Frame
10	PTI_DATA	PD04	Packet Trace Data

3.6.3 MikroBUS Socket

The MGM260P Module Explorer Kit features a mikroBUS socket compatible with mikroBUS add-on boards. mikroBUS add-on boards can expand the functionality of the kit with peripherals such as sensors and LCDs. Add-on boards follow the mikroBUS socket pin mapping and communicate with the on-kit MGM260P through UART, SPI, or I²C. Several GPIOs are exposed on the mikroBUS socket. mikroBUS add-on boards can be powered by the 5V or VMCU power rails, which are available on the mikroBUS socket.

The pinout of the MGM260P on the kit is made such that all required peripherals are available on the mikroBUS socket. The I²C signals are, however, shared with the Qwiic connector.

When inserting a mikroBUS add-on board, refer to the orientation notch on the MGM260P Module Explorer Kit, shown in the figure below, to ensure correct orientation. Add-on boards have a similar notch that needs to be lined up with the one shown below.

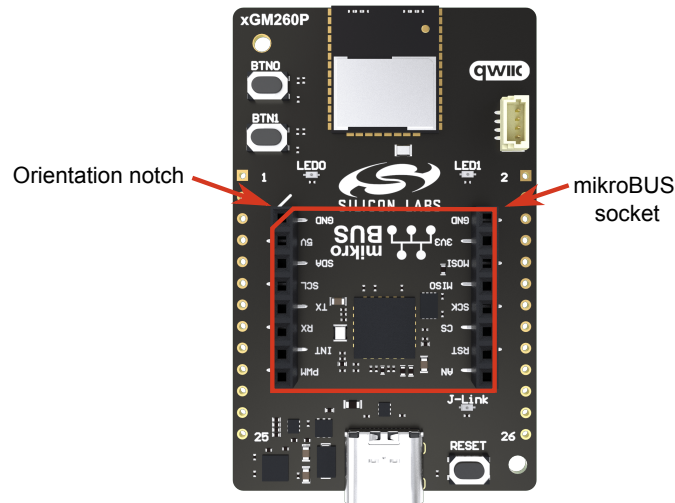


Figure 3.6. mikroBUS Add-on Board Orientation

The table below gives an overview of the mikroBUS socket pin connections to the MGM260P.

Table 3.3. mikroBUS Socket Pinout

mikro-BUS Pin Name	mikroBUS Pin Function	Connection	Shared Feature	Suggested Peripheral Mapping
AN	Analog	PD02	—	IADC0
RST	Reset	PC06	—	—
CS	SPI Chip Select	PC04	—	USARTx.CS
SCK	SPI Clock	PC03	—	USARTx.CLK
MISO	SPI Main Input Secondary Output	PC01	—	USARTx.RX
MOSI	SPI Main Output Secondary Input	PC02	—	USARTx.TX
PWM	PWM Output	PA07	—	TIMER0.CCx
INT	Hardware Interrupt	PC00	—	—
RX	UART Receive	PA05	—	USARTx.RX
TX	UART Transmit	PA04	—	USARTx.TX
SCL	I2C Clock	PC05	QWIIC_I2C_SCL	I2Cx.SCL
SDA	I2C Data	PC07	QWIIC_I2C_SDA	I2Cx.SDA

mikro-BUS Pin Name	mikroBUS Pin Function	Connection	Shared Feature	Suggested Peripheral Mapping
3V3	VCC 3.3V power	VMCU	MGM260P voltage domain	
5V	VCC 5V power	5V	Board USB voltage	
GND	Reference Ground	GND	Ground	

3.6.4 Qwiic Connector

The MGM260P Module Explorer Kit features a Qwiic connector compatible with Qwiic Connect System hardware. The Qwiic connector provides an easy way to expand the functionality of the MGM260P Module Explorer Kit with sensors, LCDs, and other peripherals over the I²C interface. The Qwiic connector is a 4-pin polarized JST connector, which ensures the cable is inserted the right way.

Qwiic Connect System hardware is daisy chain-able as long as each I²C device in the chain has a unique I²C address.

Note: The Qwiic I²C lines are shared with the on-board I²C sensors.

The Qwiic connector and its connections to Qwiic cables and the MGM260P are illustrated in the figure below.

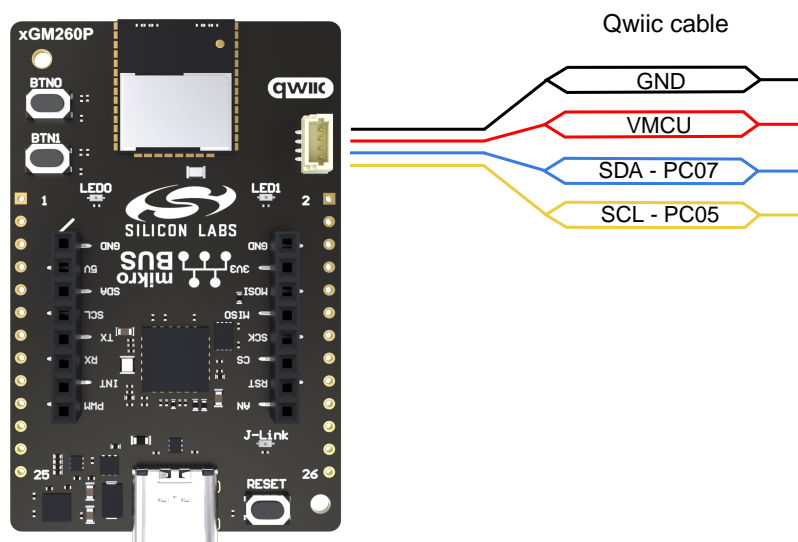


Figure 3.7. Qwiic Connector

The table below gives an overview of the Qwiic connections to the MGM260P.

Table 3.4. Qwiic Connector Pinout

Qwiic Pin	Connection	Shared Feature	Suggested Peripheral Mapping
Ground	GND	Ground	
3.3V	VMCU	MGM260P voltage domain	
SDA	PC07	MIKROE_I2C_SDA	I2Cx.SDA
SCL	PC05	MIKROE_I2C_SCL	I2Cx.SCL

3.6.5 Debug USB Type-C Connector

The debug USB port can be used for uploading code, debugging, and as a Virtual COM port. More information is available in section [4. Debugging](#).

4. Debugging

The MGM260P Module Explorer Kit contains an on-board SEGGER J-Link Debugger that interfaces to the target MGM260P using the Serial Wire Debug (SWD) interface. The debugger allows the user to download code and debug applications running in the target MGM260P. Additionally, it provides a virtual COM port (VCOM) to the host computer that is connected to the target device's serial port for general purpose communication between the running application and the host computer. The on-board debugger is accessible through the USB Type-C connector.

4.1 On-board Debugger

The on-board debugger is a SEGGER J-Link debugger running on an EFM32 Giant Gecko. The debugger is directly connected to the debug and VCOM pins of the target MGM260P.

When the debug USB cable is inserted, the on-board debugger is automatically activated and takes control of the debug and VCOM interfaces. This means that debug and communication will **not** work with an external debugger connected at the same time. The on-board LDO is also activated, providing power to the board.

4.2 Virtual COM Port

The virtual COM port is a connection to a UART of the target MGM260P and allows serial data to be sent and received from the device. The on-board debugger presents this as a virtual COM port on the host computer that shows up when the USB cable is inserted.

Data is transferred between the host computer and the debugger through the USB connection, which emulates a serial port using the USB Communication Device Class (CDC). From the debugger, the data is passed on to the target device through a physical UART connection.

The serial format is 115200 bps, 8 bits, no parity, and 1 stop bit by default.

Note: Changing the baud rate for the COM port on the PC side does not influence the UART baud rate between the debugger and the target device.

5. Schematics, Assembly Drawings, and BOM

Schematics, assembly drawings, and Bill of Materials (BOM) are available through Simplicity Studio when the kit documentation package has been installed. They are also available from the kit page on the Silicon Labs website: silabs.com.

6. Kit Revision History and Errata

6.1 Revision History

The kit revision can be found printed on the box label of the kit, as outlined in the figure below. The kit revision history is summarized in the table below.



Figure 6.1. Revision Info

Table 6.1. Kit Revision History

Kit Revision	Released	Description
A00	7 January 2025	New kit introduction of MGM260P-EK2713A.

6.2 Errata

There are no known errata at present.

7. Board Revision History and Errata

7.1 Revision History

The board revision can be found laser printed on the board, and the board revision history is summarized in the following table.

Table 7.1. Board Revision History

Revision	Released	Description
A04	20 December 2024	Initial production release.

7.2 Errata

There are no known errata at present.

8. Document Revision History

Revision 1.0

February 2025

- Initial document release.

Simplicity Studio

One-click access to MCU and wireless tools, documentation, software, source code libraries & more. Available for Windows, Mac and Linux!



IoT Portfolio
www.silabs.com/iot



SW/HW
www.silabs.com/simplicity



Quality
www.silabs.com/quality



Support & Community
www.silabs.com/community

Disclaimer

Silicon Labs intends to provide customers with the latest, accurate, and in-depth documentation of all peripherals and modules available for system and software implementers using or intending to use the Silicon Labs products. Characterization data, available modules and peripherals, memory sizes and memory addresses refer to each specific device, and "Typical" parameters provided can and do vary in different applications. Application examples described herein are for illustrative purposes only. Silicon Labs reserves the right to make changes without further notice to the product information, specifications, and descriptions herein, and does not give warranties as to the accuracy or completeness of the included information. Without prior notification, Silicon Labs may update product firmware during the manufacturing process for security or reliability reasons. Such changes will not alter the specifications or the performance of the product. Silicon Labs shall have no liability for the consequences of use of the information supplied in this document. This document does not imply or expressly grant any license to design or fabricate any integrated circuits. The products are not designed or authorized to be used within any FDA Class III devices, applications for which FDA premarket approval is required or Life Support Systems without the specific written consent of Silicon Labs. A "Life Support System" is any product or system intended to support or sustain life and/or health, which, if it fails, can be reasonably expected to result in significant personal injury or death. Silicon Labs products are not designed or authorized for military applications. Silicon Labs products shall under no circumstances be used in weapons of mass destruction including (but not limited to) nuclear, biological or chemical weapons, or missiles capable of delivering such weapons. Silicon Labs disclaims all express and implied warranties and shall not be responsible or liable for any injuries or damages related to use of a Silicon Labs product in such unauthorized applications.

Trademark Information

Silicon Laboratories Inc., Silicon Laboratories®, Silicon Labs®, SiLabs® and the Silicon Labs logo®, Bluegiga®, Bluegiga Logo®, EFM®, EFM32®, EFR, Ember®, Energy Micro, Energy Micro logo and combinations thereof, "the world's most energy friendly microcontrollers", Redpine Signals®, WiSeConnect, n-Link, EZLink®, EZRadio®, EZRadioPRO®, Gecko®, Gecko OS, Gecko OS Studio, Precision32®, Simplicity Studio®, Telegesis, the Telegesis Logo®, USBXpress®, Zentri, the Zentri logo and Zentri DMS, Z-Wave®, and others are trademarks or registered trademarks of Silicon Labs. ARM, CORTEX, Cortex-M3 and THUMB are trademarks or registered trademarks of ARM Holdings. Keil is a registered trademark of ARM Limited. Wi-Fi is a registered trademark of the Wi-Fi Alliance. All other products or brand names mentioned herein are trademarks of their respective holders.



Silicon Laboratories Inc.
400 West Cesar Chavez
Austin, TX 78701
USA

www.silabs.com

Mouser Electronics

Authorized Distributor

Click to View Pricing, Inventory, Delivery & Lifecycle Information:

[Silicon Labs:](#)

[MGM260P-EK2713A](#)