

C8051F970 DEVELOPMENT KIT QUICK START GUIDE

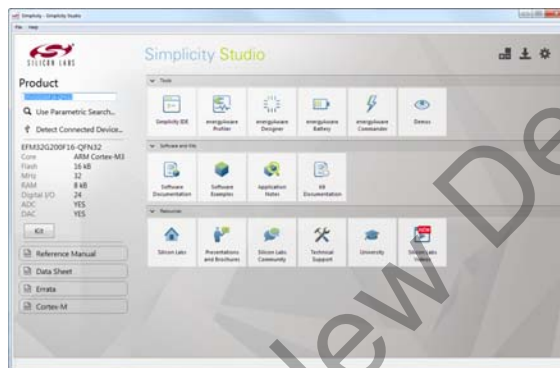
1. Getting Started

Step 1. Install Simplicity Studio

If it's not already installed, download and install Simplicity Studio from the Silicon Labs website. Simplicity Studio is a free software suite needed to start developing your application.

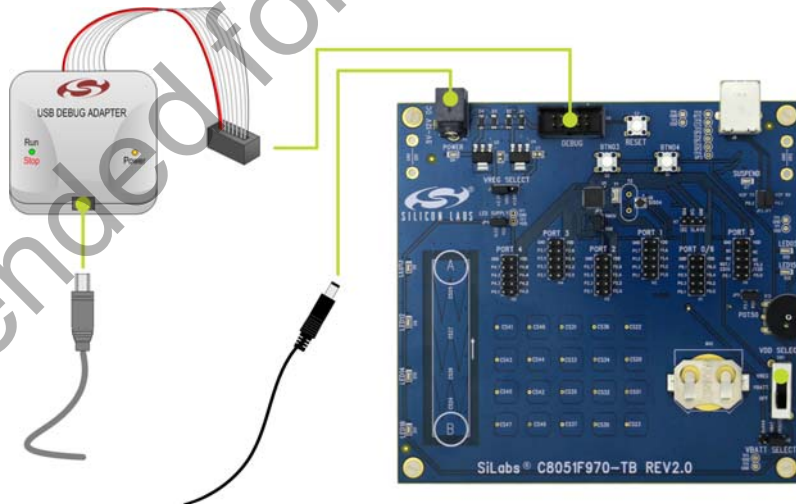
www.silabs.com/simplicity-studio

The CP210x VCP drivers must be installed to view the capacitive sensing data. Accept if Simplicity Studio opens a prompt to install the drivers.



Step 2. Set Up Your Kit

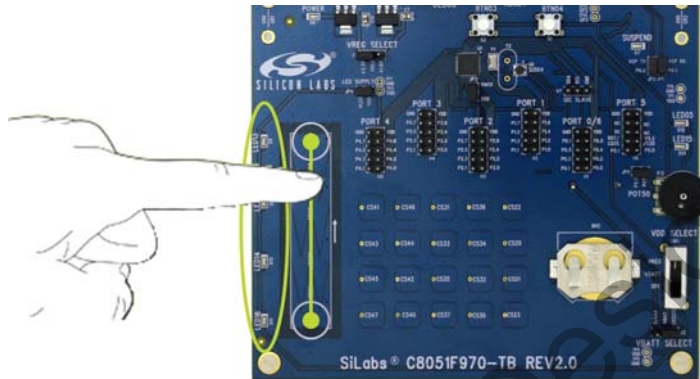
Connect the USB Debug Adapter to the computer using one of the standard USB cables. Connect the 10-pin ribbon cable from the USB Debug Adapter to the DEBUG header (H8) on the development board and move the VDD Select switch (SW1) to the VREG position. Then, connect the power adapter to the 5–12 V DC (P1) connector on the development board.



C8051F970DK-QSG

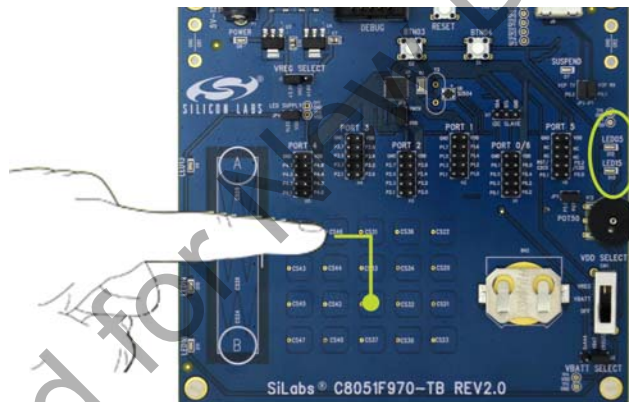
Step 3. Use the Capacitive Sensing Slider

Slide a finger along the capacitive sensing slider (picture). LED12, LED13, LED14, and LED16 will light up indicating the detected finger position on the slider.



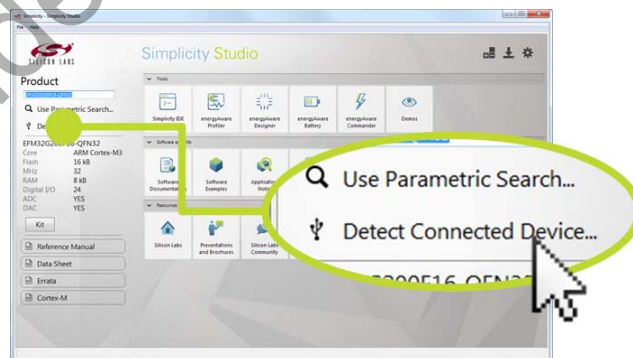
Step 4. Use the Capacitive Sensing Buttons

Place a finger on one of the buttons in the capacitive sensing array (picture). LED05 will indicate a single finger detected, and LED15 lights up when a second button is pressed concurrently.



Step 5. Detect Your Device

Once the kit is connected, open Simplicity Studio and click the “Detect Connected Device” button. This will verify that the installation was successful, identify the MCU on the kit hardware, and automatically configure the software tools for use with your device.



Step 6. View the Capacitive Sensing Data

The CP210x VCP drivers must be installed to view the capacitive sensing data. If not installed during the Simplicity Studio installation process, drivers may be installed manually by going to:

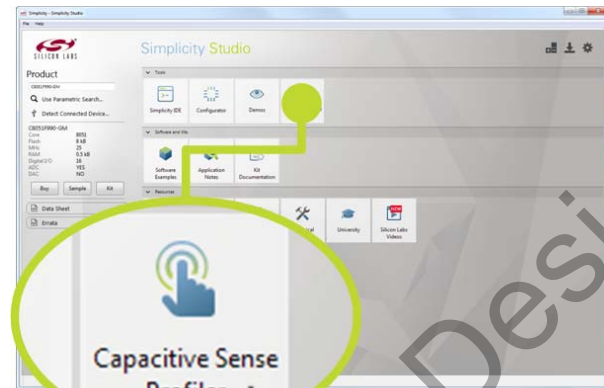
Help → Install Drivers → CP210x VCP

Or download and install from:

www.silabs.com/vcpdrivers

Connect a USB cable between the computer and the USB port on the development board (J9), and click the “Capacitive Sense Profiler” tile under Software in Simplicity Studio.

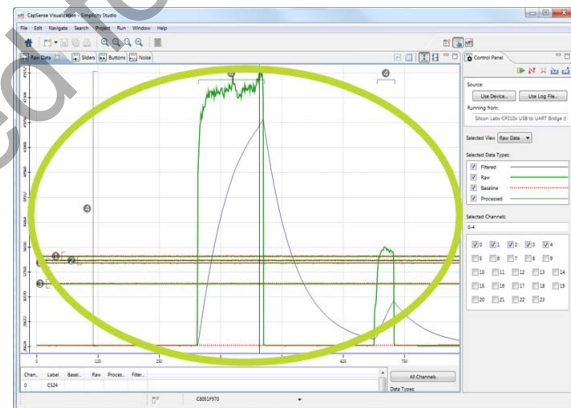
The application notes, “AN0828: Capacitive Sensing Library Overview” and “AN0829: Capacitive Sensing Library Configuration Guide”, contain more information on how to use the capacitive sensing library and profiler tool. These documents can be accessed using the “Application Notes” tile.



Step 7. Touch and Visualize

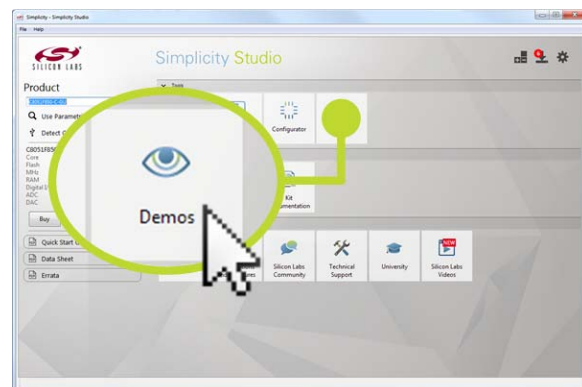
The Capacitive Sense Profiler indicates touches, raw and processed data, and noise information in a simple-to-use GUI.

Touch and release any of the capacitive sensing buttons on the board. The profiler will display the measured raw data delta, touch detection points, and baseline.



Step 8. Load New Demos in a Few Easy Steps

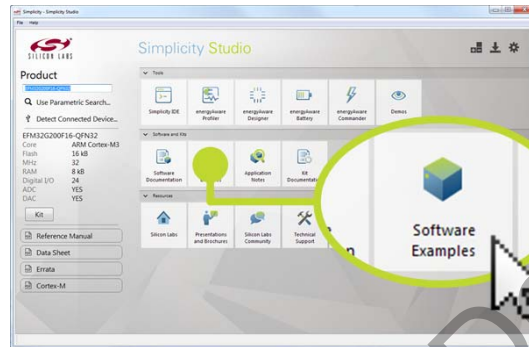
Load a new demo onto the board by clicking the Demos tile and selecting the desired demo from the list.



2. Resources

■ Software Examples

Other software examples can be imported, compiled, and downloaded using the “Software Examples” tile.



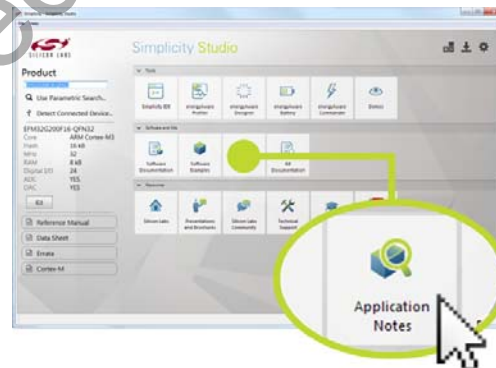
■ Kit Documentation and User's Guide

Kit documentation like the schematic and detailed board description can be found using the “Kit Documentation” tile.



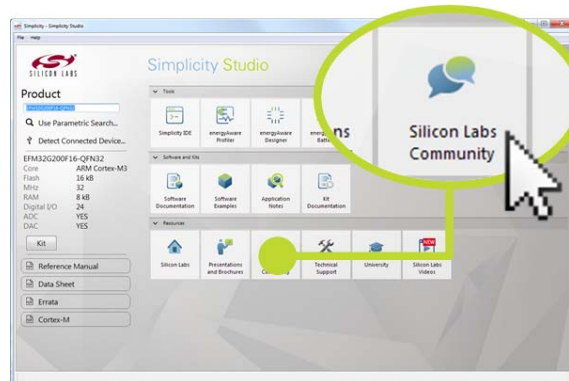
■ Capacitive Sense Profiler

“AN0828: Capacitive Sensing Library Overview” and “AN0829: Capacitive Sensing Library Configuration Guide” contain more information on how to use the capacitive sensing library and visualization tool. These documents can be accessed using the “Application Notes” tile.



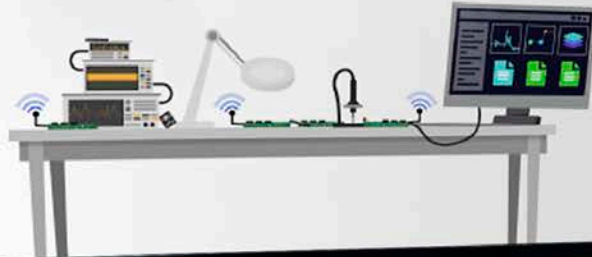
■ Community and Support

Have a question? Visit the Silicon Labs community by clicking the “Community” tile.



Silicon Labs

Simplicity Studio™4



Simplicity Studio

One-click access to MCU and wireless tools, documentation, software, source code libraries & more. Available for Windows, Mac and Linux!



IoT Portfolio
www.silabs.com/IoT



SW/HW
www.silabs.com/simplicity



Quality
www.silabs.com/quality



Support and Community
community.silabs.com

Disclaimer

Silicon Labs intends to provide customers with the latest, accurate, and in-depth documentation of all peripherals and modules available for system and software implementers using or intending to use the Silicon Labs products. Characterization data, available modules and peripherals, memory sizes and memory addresses refer to each specific device, and "Typical" parameters provided can and do vary in different applications. Application examples described herein are for illustrative purposes only. Silicon Labs reserves the right to make changes without further notice and limitation to product information, specifications, and descriptions herein, and does not give warranties as to the accuracy or completeness of the included information. Silicon Labs shall have no liability for the consequences of use of the information supplied herein. This document does not imply or express copyright licenses granted hereunder to design or fabricate any integrated circuits. The products are not designed or authorized to be used within any Life Support System without the specific written consent of Silicon Labs. A "Life Support System" is any product or system intended to support or sustain life and/or health, which, if it fails, can be reasonably expected to result in significant personal injury or death. Silicon Labs products are not designed or authorized for military applications. Silicon Labs products shall under no circumstances be used in weapons of mass destruction including (but not limited to) nuclear, biological or chemical weapons, or missiles capable of delivering such weapons.

Trademark Information

Silicon Laboratories Inc.®, Silicon Laboratories®, Silicon Labs®, SiLabs® and the Silicon Labs logo®, Bluegiga®, Bluegiga Logo®, Clockbuilder®, CMEMS®, DSPLL®, EFM®, EFM32®, EFR®, Ember®, Energy Micro, Energy Micro logo and combinations thereof, "the world's most energy friendly microcontrollers", Ember®, EZLink®, EZRadio®, EZRadioPRO®, Gecko®, ISOModem®, Precision32®, ProSLIC®, Simplicity Studio®, SiPHY®, Telegesis, the Telegesis Logo®, USBXpress® and others are trademarks or registered trademarks of Silicon Labs. ARM, CORTEX, Cortex-M3 and THUMB are trademarks or registered trademarks of ARM Holdings. Keil is a registered trademark of ARM Limited. All other products or brand names mentioned herein are trademarks of their respective holders.



SILICON LABS

Silicon Laboratories Inc.
400 West Cesar Chavez
Austin, TX 78701
USA

<http://www.silabs.com>

Mouser Electronics

Authorized Distributor

Click to View Pricing, Inventory, Delivery & Lifecycle Information:

[Silicon Laboratories:](#)

[C8051F970-A-DK](#)