

Embedded Wi-Fi Mesh with Enterprise Security

MNS-300EM

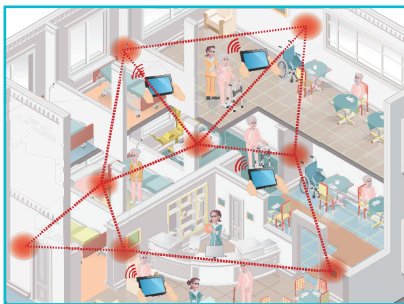
Silex Mesh Delivers High Throughput and Reliable Connectivity

Overview

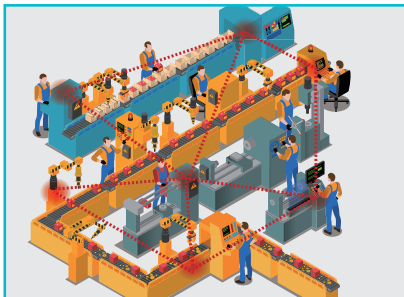
MNS-300EM is an embedded module that provides mesh connectivity for low-power portable devices to connect to a 802.11s capable mesh network. The MNS-300EM features NXP's power efficient and cost optimized applications processor, the i.MX 6ULL, featuring a single ARM Cortex-A7 core, with an 802.11ac radio, a complete TCP/IP network protocol stack, and an optimized QCA9377 wireless radio driver and security supplicant in a self-contained hardware package. It also supports enterprise security, including WPA2 with 802.1x authentication, which ensures data integrity and privacy for highly sensitive applications. It can be used as a mesh node to extend your existing BR-400AN based mesh network infrastructure. It supports two operation modes; mesh mode and WLAN slave mode (regular Wi-Fi). It has the ability to toggle between these two operation modes making it a flexible option for either of these two types Wi-Fi networks.

Applications

Medical / Health Care

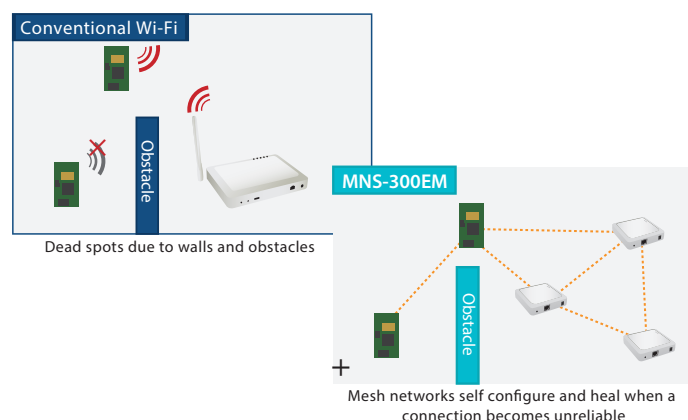


Factory / Warehouse



Benefits

Mesh networks are "self healing," since the network automatically finds the fastest and most reliable paths to send data, even if nodes are blocked or lose their signal. In addition to creating a strong, reliable Wi-Fi signal, it is also easier to setup and manage a mesh network when compared with traditional Wi-Fi.



Features

Two Operation Modes

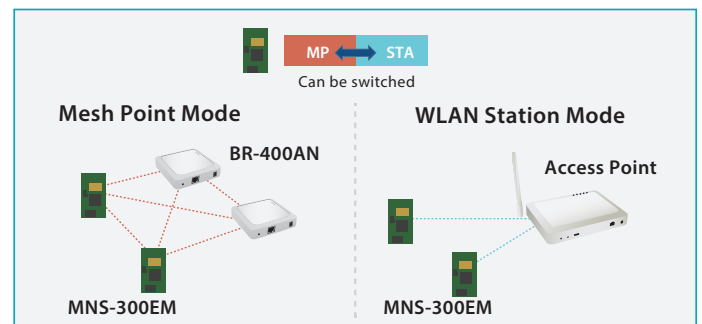
MNS-300EM can operate in two modes. It can automatically toggle between the two modes depending on its wireless environment.

Mesh Point Mode (MP):

As a mesh point, MNS-300EM can provide mesh backhaul /network connectivity. It is compatible with our BR-400AN. Mesh points are aware of potential neighbors and can form new mesh links if the current mesh link is no longer available.

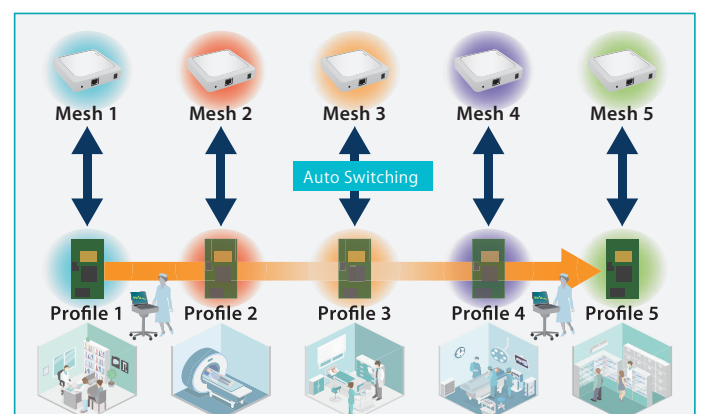
WLAN Station Mode (STA):

MNS-300EM in STA mode, can connect to a traditional access point as a wireless client and join the wireless network.



Automatic Profile Switching

MNS-300EM can save up to five mesh network profiles that it wants to automatically toggle between. As your device moves between different mesh networks, it automatically configures itself to the network profile with the best strength.



PN: 141-xxxxxx-xxx
REV A 20190918

Mouser Electronics

Authorized Distributor

Click to View Pricing, Inventory, Delivery & Lifecycle Information:

Silex Technology:

[MNS-300EM-US](#) [MNS-300EM-US-SP](#)