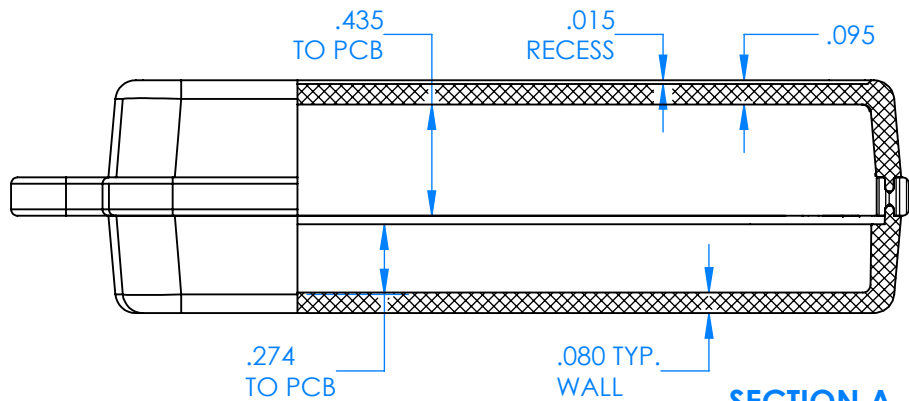
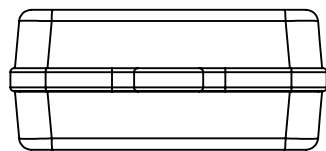
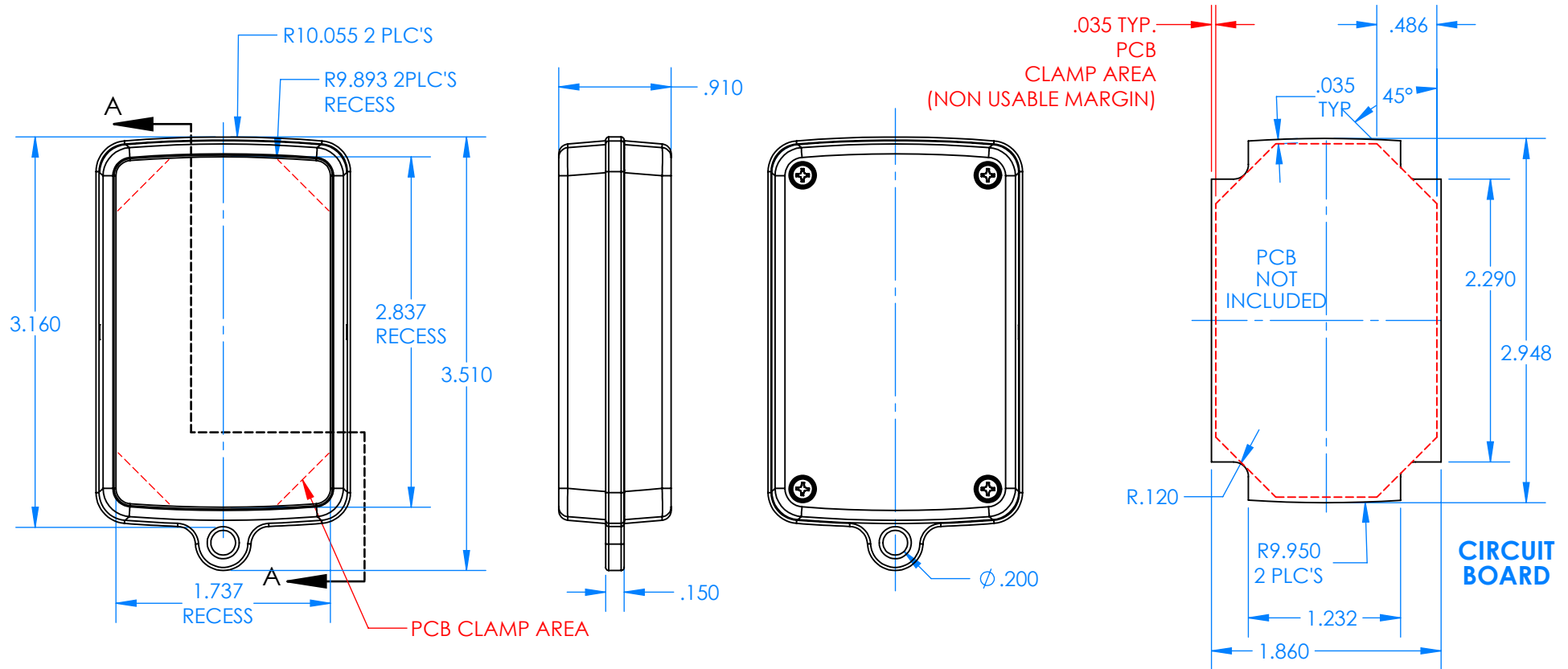


# SERPAC CXL68D-YY-A-ZZ

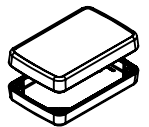
Electronic Enclosures



## Enclosure color (YY)

### Top-Bottom combinations available

BK=black  
CL=clear  
TRGY=translucent gray  
TRRD=translucent red



## Seal color (ZZ)

BK=black  
BL=blue  
GM=gunmetal  
NG=neon green  
NO=neon orange  
OR=orange  
YL=yellow  
WH=white



PN	Description
5535D	(1) BW 6C Top style D
5536D	(1) BW 6C Bottom style D
5541A	(1) CXL6A Series perimeter seal style A
6002	(4) #2 X 3/8" PH HD screw TORQUE 35-60 in-oz.

Wateright enclosure meets or exceeds:  
IP67  
NEMA 4X, 12, 13

# Mouser Electronics

Authorized Distributor

Click to View Pricing, Inventory, Delivery & Lifecycle Information:

## SERPAC:

[CXL68DBKABL](#) [CXL68DBKANG](#) [CXL68DBKABK](#) [CXL68DBKAOR](#) [CXL68DBKAYL](#) [CXL68DBKAGM](#)  
[CXL68DBKANO](#) [CXL68DBKAWH](#) [CXL68D-CLBK-A-BK](#) [CXL68D-CLBK-A-BL](#) [CXL68D-CLBK-A-GM](#) [CXL68D-CLBK-](#)  
[A-NG](#) [CXL68D-CLBK-A-NO](#) [CXL68D-CLBK-A-OR](#) [CXL68D-CLBK-A-WH](#) [CXL68D-CLBK-A-YL](#)