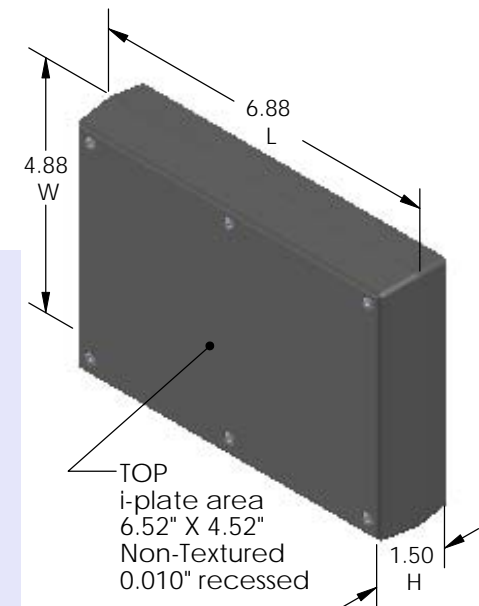
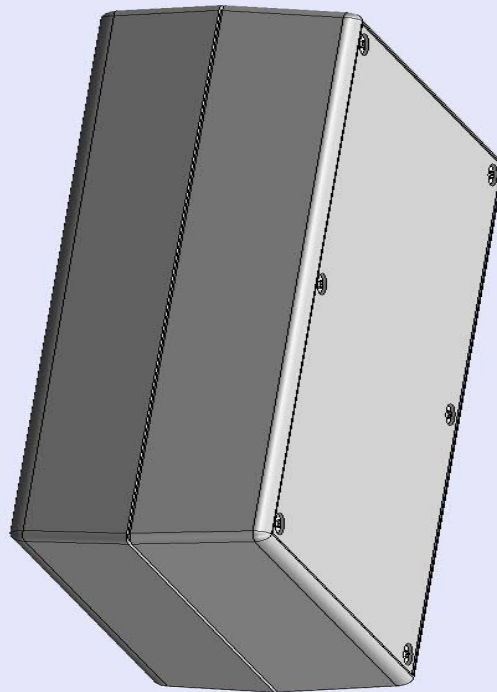


SERPAC 171 Ri (exploded isometric)

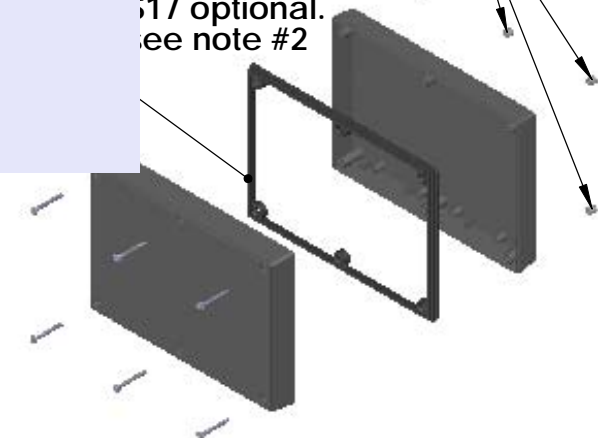
Electronic Enclosures

- Click on image to show toolbar. Use ►|| to Play/Pause Animation.
- Left click and drag on image to move 3D model.



Threaded inserts only have to be assembled the first time.

proofing gasket PS-17 optional. See note #2



- a) Zoom in & out with center wheel.
- b) Pause at any moment to view and or print views.
- c) Change the views to ortho and section views if needed from the Views pull down menu.
- d) Explore options included in the tool bar like: Views, Transparency of model, Lighting type, etc.

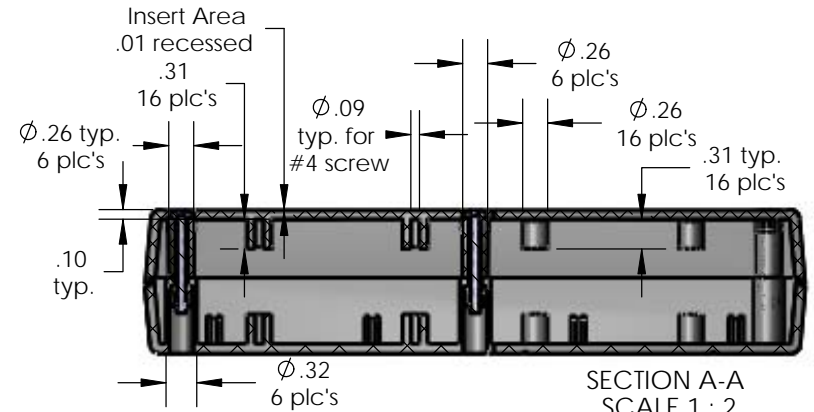
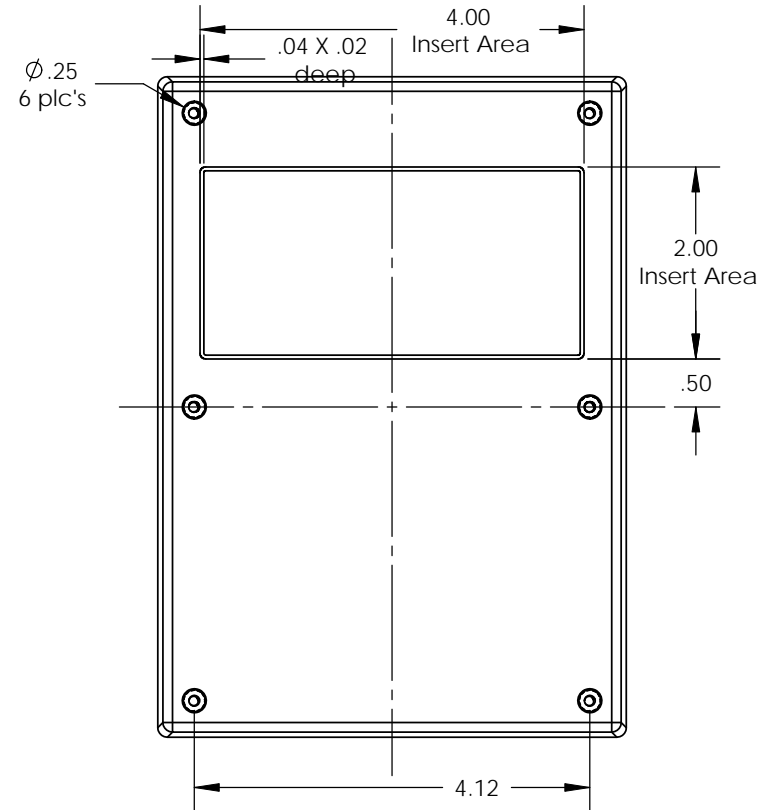
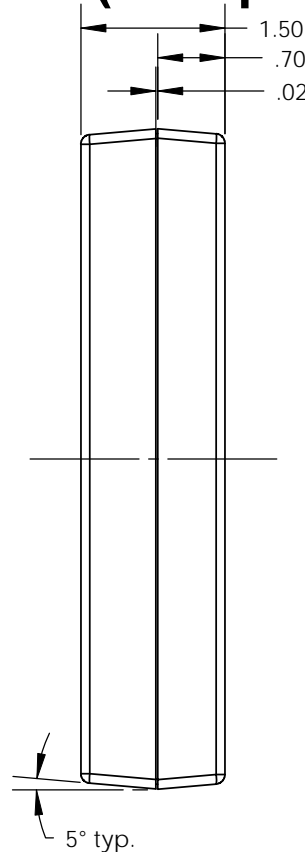
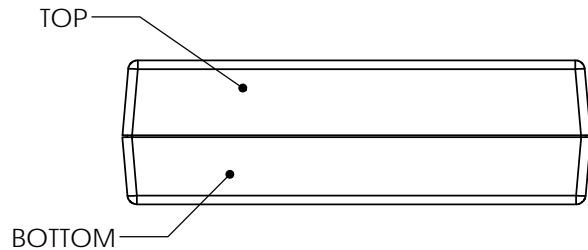
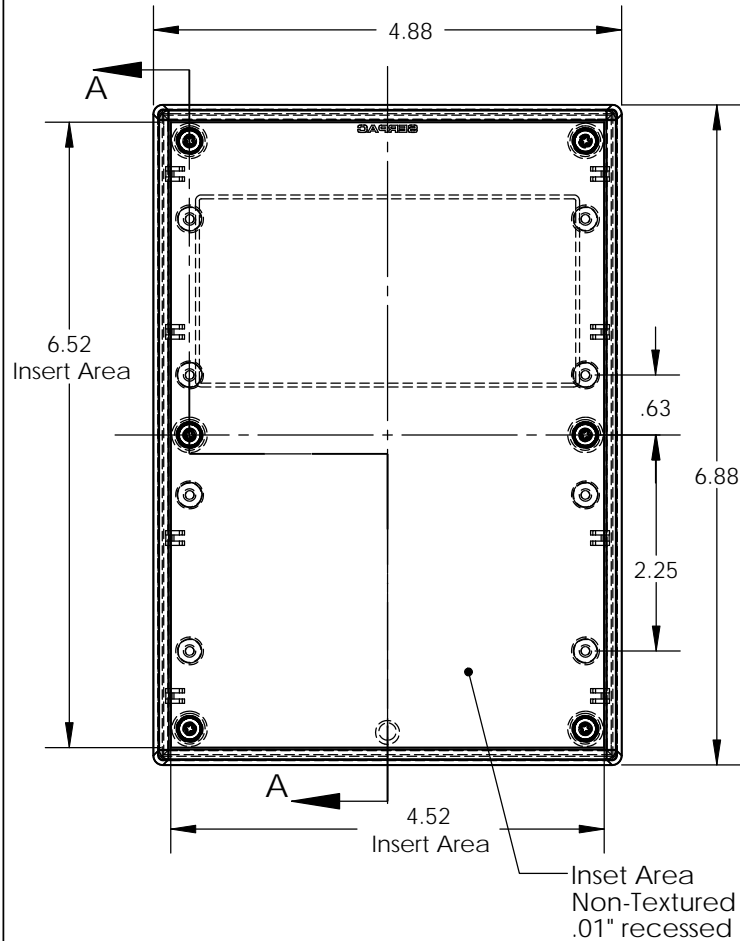
| PART NO. | DESCRIPTION (Included) | ACCESSORIES (Optional) | |
|----------|------------------------|------------------------|------------------------------|
| 7-1-RI | TOP | PART NO. | DESCRIPTION |
| 17 | BOTTOM | PS-17 | Perimeter Seal |
| 6017 | 4-40 SCREW (6) | 370 | Prototype Grid Circuit Board |
| 6102 | THREADED INSERTS (6) | 470 | Prototype Clad Circuit Board |

Notes: Enclosure weight .42 lbs / 190 gm
1) Enclosure meets or exceeds IP40 and NEMA 1
2) When used with PS-17 the enclosure meets or exceeds IP 67 and NEMA 4X, 12 and 13 MIL-STD-810G 506.5
3) Circuit Board drawings can be download at:
<http://www.serpac.com/Accessories/CircuitBoard/drawings/370-470-cbc.pdf>
4) All components are RoHS Compliant.

ALL DIMENSIONS ARE $\pm .010"$ 8/28/09 (1 of 2)
619 Commercial Ave. Covina, CA 91723
Ph. (626) 331-0517 Fx. (626) 331-8584 serpac.com

SERPAC 171Ri (user print)

Electronic Enclosures



SECTION A-A
SCALE 1 : 2

| PART NO. | DESCRIPTION (Included) | ACCESSORIES (Optional) | |
|----------|------------------------|------------------------|------------------------------|
| 7-1Ri | TOP | PART NO. | DESCRIPTION |
| 17 | BOTTOM | PS17 | Perimeter Seal |
| 6017 | 4-40 SCREW (6) | 370 | Prototype Grid Circuit Board |
| 6102 | THREADED INSERTS (6) | 470 | Prototype Clad Circuit Board |

Notes: Enclosure weight .45 lbs / 206 gm

- 1) Enclosure meets or exceeds IP40 and NEMA 1
- 2) When used with PS17 the enclosure meets or exceeds IP 67 and NEMA 4X, 12 and 13 MIL-STD-810G 506.5
- 3) Circuit Board drawings can be download at: <http://www.serpac.com/Accessories/CircuitBoard/drawings/370-470-cbg.pdf>
- 4) All components are RoHS Compliant.

ALL DIMENSIONS ARE ± .010" 7/28/10 (2 of 2)
2009 Wright Ave. La Verne, CA 91750
Ph. (626) 331-0517 Fx. (626) 331-8584 www.serpac.com

Mouser Electronics

Authorized Distributor

Click to View Pricing, Inventory, Delivery & Lifecycle Information:

SERPAC:

[171RI,BK](#) [171RI,GY](#) [171RI.AL](#)