



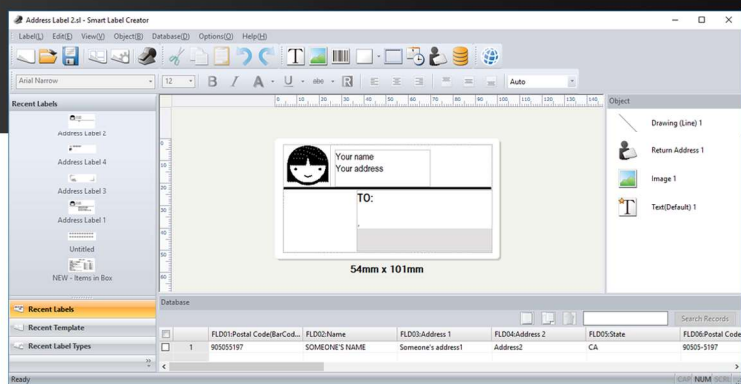
SLP 600 SERIES SMART LABEL PRINTERS

**SLEEK.
SIMPLE.
SURPRISINGLY AFFORDABLE.**

Seiko Instruments' SLP 600 series label printers bring industry-leading direct thermal printing technology to your desktop from SII, the world-leader in precision manufacturing. Whether you need address labels, shipping labels with bar codes, color-coded file folder labels, or any number of other label printing uses, the SLP 600 series gives you a faster, easier, and more affordable way to get organized.

PRODUCT HIGHLIGHTS

Seiko Instruments label printers are quick to setup and easy to use. Advanced direct thermal printer technology means fast — up to almost 4 inches per second — high- quality label printing without the fuss of ink cartridges, toner or ribbons. The only consumable these printers use is labels. Replacing rolls and changing labels could not be easier. Simply drop in a new roll and you are ready. The SLP 600 series features three affordable printers, giving you an array of print speed, print resolution, and communication interface options to choose from. Each model includes a limited 3-year warranty.



Smart Label Software

Rapidly produce professional labels on your PC or Mac, running Windows, Mac OS, or Linux. Intuitive Smart Label Software supports Microsoft Excel, Outlook, Access, and Word, and gives you an easy-to-use interface for creating, formatting, printing, and saving all your labels.

Need to design your own labels?

No problem. Smart Label Printer software gives you the tools to create great looking labels. Specify where to place text, graphics, or bar codes. Use your own images by importing from existing desktop files or use copy and paste to import images from your computer's clipboard. For fast, personalized name tag labels, Smart Label Printer software imports images captured directly from your computer's camera.



Seiko Instruments U.S.A., Inc.

21221 S. Western Avenue, Suite 250
Torrance, CA 90501
Tel: 310.517.7778
Fax: 310.517.8154
E: printerinfo@seikoinstruments.com
W: www.sii-thermalprinters.com

LABELS

The SLP 600 series label printers support a wide variety of label stock. For best results, use only labels designed for the SLP 600 series by SII. Popular labels include:

- Address labels: clear, white, and assorted colors for all your mailing needs.
- Shipping labels: with plenty of options: clear, opaque, removable, and bulk rolls.
- File folder labels: multiple sizes and assorted colors to get you organized.
- Multipurpose Labels: narrow, wide, clear, tamper proof, bulk rolls removable, "toughie"
- Name badge, Jewelry Labels, custom labels (min qty required)

For a complete list of available products, visit www.siibusinessproducts.com



TECHNICAL SPECIFICATIONS

Specification	SLP620	SLP650 & SLP650SE
Printing Technology	Direct Thermal	
Resolution	203 DPI (8dots/mm)	300 DPI (11.81 dots/mm)
Max. Paper Width	2.28 in. (57.9 mm)	
Max. Printing Speed	2.76 inches/second (70mm/second)	3.94 inches/second (100 mm/second)
Interface	USB	650 USB 650SE USB, RS-232C
Operating Voltage	DC5.7 V to DC6.3 V	DC11.4 V to DC12.6 V
Current Consumption (Normal)	2.3 A	2.8 A
Current Consumption (Maximum)	2.5 A	3.0 A
Dimensions	4.48 in. (W) x 6.77 in. (D) x 5.83 in. (H) 113.8mm (W) x 172.0 mm (D) x 148.0 mm (H)	
Weight	Approx. 1.08 lbs. (490 g)	
Life Span	6 km	15 km

Mouser Electronics

Authorized Distributor

Click to View Pricing, Inventory, Delivery & Lifecycle Information:

[Seiko Instruments:](#)

[SLP650SE](#)