

Voltage selector switch, 6 stages, step switch, panel mounting



See below:

Approvals and Compliances

Description

- Voltage Selector , 6 stages
- Step switch
- Solder terminals

References

Weblinks

[pdf data sheet](#), [html datasheet](#), [General Product Information](#), [Approvals](#), [Distributor-Stock-Check](#), [Detailed request for product](#)

Technical Data

| | |
|---------------------------------|-------------------------------------|
| Ratings | IEC: 6.3 A / 250 VAC; 50 Hz |
| | UL: 10 A / 250 VAC; 60 Hz |
| | CSA: 8 A / 250 VAC; 60 Hz |
| Mounting | Panel mount front side |
| Attachment | Screw-on mounting |
| Terminal | Solder |
| Number of Stages | 6 |
| Lifetime | 300 operating cycles (without load) |
| Degree of Protection | IP40 |
| Allowable Operation Temperature | -40 °C to 85 °C |
| Climatic Category | 25/85/21 acc. to IEC 60068-1 |
| Material: Socket | Thermoplastic, black, UL 94V-0 |
| Weight | 16.5 g |

| | |
|---------------------------------|---|
| Solderability | 350 °C / 2 sec acc. to IEC 60068-2-20, Test Ta, method 2 |
| Resistance to Soldering Heat | 350 °C / 10 sec acc. to IEC 60068-2-20, Test Tb, method 2 |
| Insulation Resistance | > 10'000MΩ (500VDC; 1min) |
| Contact Resistance | < 10 mΩ at 20 mV |
| Dielectric Strength | > 2.5kVAC between L-N > 4kVAC between L/N-PE (1min; 50Hz) |
| Clearance and Creepage Distance | > 5mm > 8mm between L/N-PE |
| Resistance to Vibration | acc. to IEC 60068-2-6, test Fc |

Approvals and Compliances



Detailed information on product approvals, code requirements, usage instructions and detailed test conditions can be looked up in [Details about Approvals](#)

SCHURTER products are designed for use in industrial environments. They have approvals from independent testing bodies according to national and international standards. Products with specific characteristics and requirements such as required in the automotive sector according to IATF 16949, medical technology according to ISO 13485 or in the aerospace industry can be offered exclusively with customer-specific, individual agreements by SCHURTER.

Approvals



The approval mark is used by the testing authorities to certify compliance with the safety requirements placed on electronic products.

Approval Reference Type: SWP

| Approval Logo | Certificates | Certification Body | Description |
|---|-------------------------------|--------------------|--------------------------------|
|  | VDE Approvals | VDE | Certificate Number: 40040798 |
|  | UL Approvals | UL | UR File Number: NRNT2&8.E72661 |



Product standards

Product standards that are referenced

| Organization | Design | Standard | Description |
|---|-----------------------|------------------|------------------------------|
|  | Designed according to | UL 508 | Industrial control equipment |
|  | Designed according to | CSA C22.2 no. 14 | Industrial Control Equipment |





Application standards


Application standards where the product can be used

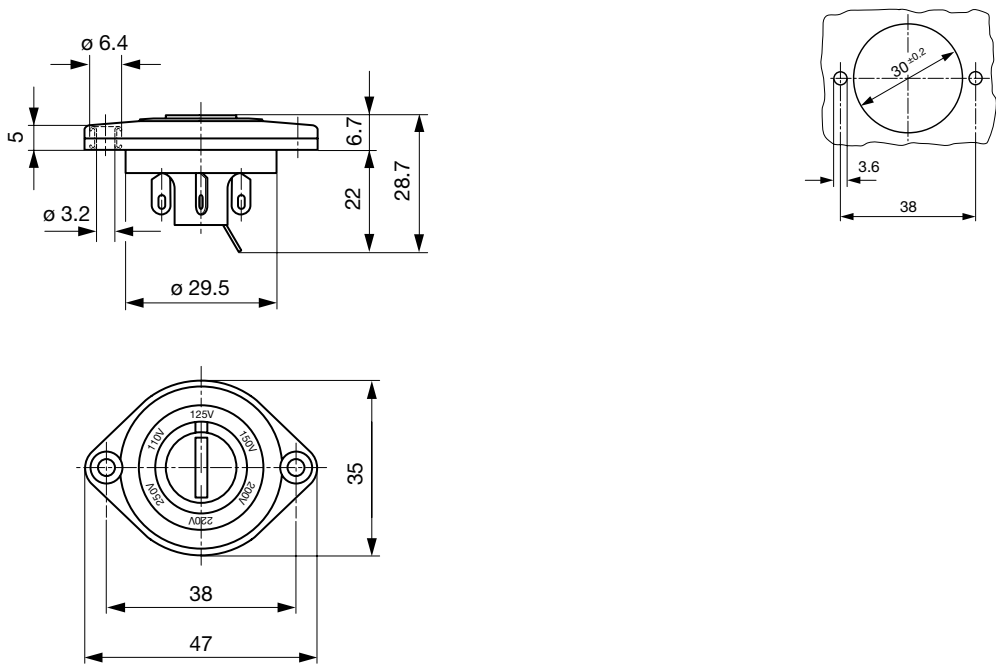
| Organization | Design | Standard | Description |
|--|--------------------------------|----------------|--|
|  | Suitable for applications acc. | IEC/UL 62368-1 | Audio/video, information and communication technology equipment - Part 1: Safety requirements |
|  | Suitable for applications acc. | IEC 60335-1 | Safety of electrical appliances for household and similar purposes. Meets the requirements for appliances in unattended use. This includes the enhanced requirements of glow wire tests acc. to IEC 60695-2-11 or -12 & -13. |

Compliances

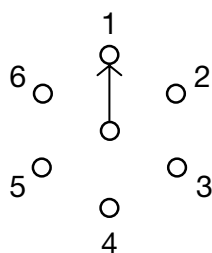
The product complies with following Guide Lines

| Identification | Details | Initiator | Description |
|--|--|-------------|---|
|  | CE declaration of conformity | SCHURTER AG | The CE marking declares that the product complies with the applicable requirements laid down in the harmonisation of Community legislation on its affixing in accordance with EU Regulation 765/2008. |
|  | UKCA declaration of conformity | SCHURTER AG | The UKCA marking declares that the product complies with the applicable requirements laid down in the British Amendment of Regulation (EC) 765/2008. |
|  | China RoHS | SCHURTER AG | The law SJ / T 11363-2006 (China RoHS) has been in force since 1 March 2007. It is similar to the EU directive RoHS. |
|  | REACH | SCHURTER AG | On 1 June 2007, Regulation (EC) No 1907/2006 on the Registration, Evaluation, Authorization and Restriction of Chemicals 1 (abbreviated as "REACH") entered into force. |

Dimension [mm]  47 mm
Panel mounting hole



Diagrams



All Variants

| Letterings | | | | | | Order Number |
|------------|---------|---------|---------|---------|---------|--------------|
| Stage 1 | Stage 2 | Stage 3 | Stage 4 | Stage 5 | Stage 6 | |
| 110 V | 125 V | 145 V | 160 V | 220 V | 250 V | 0033.1101 |
| | | | | | | 0033.1104 |
| 100 V | 115 V | 127 V | | 220 V | 240 V | 0033.1108 |
| 100 V | 115 V | 120 V | 220 V | 240 V | | 0033.1109 |
| 100 V | 115 V | 125 V | 200 V | 220 V | 240 V | 0033.1113 |
| | 100 V | 115 V | 220 V | 240 V | | 0033.1118 |
| 100 V | 110 V | 220 V | 240 V | | | 0033.1120 |
| 100 V | 120 V | 200 V | 220 V | 230 V | 240 V | 0033.1127 |
| 100 V | 110 V | 120 V | 125 V | 230 V | 240 V | 0033.1130 |
| 4 Ω | 8 Ω | 16 Ω | | | | 0033.1133 |
| 110 V | 220 V | 230 V | | | | 0033.1134 |
| 100 | 120 | 200 | 208 | 230 | 0 | 0033.1136 |
| 100 | 115 | 230 | 240 | | | 0033.1137 |
| 1 | 2 | 3 | 4 | 5 | 0 | 0033.1140 |

Availability for all products can be searched real-time: <https://www.schurter.com/en/info-center/support-tools/stock-check-distributors>

Packaging Unit

50 Pcs

Mouser Electronics

Authorized Distributor

Click to View Pricing, Inventory, Delivery & Lifecycle Information:

[Schurter:](#)

| | | | | | | | | | |
|----------------------------------|----------------------------------|----------------------------------|----------------------------------|----------------------------------|----------------------------------|----------------------------------|----------------------------------|----------------------------------|----------------------------------|
| <u>0033.1101</u> | <u>0033.1104</u> | <u>0033.1106</u> | <u>0033.1109</u> | <u>0033.1111</u> | <u>0033.1112</u> | <u>0033.1118</u> | <u>0033.1119</u> | <u>0033.1124</u> | <u>0033.1125</u> |
| <u>0033.1127</u> | <u>0033.1133</u> | <u>0033.1137</u> | <u>0033.1120</u> | <u>0033.1134</u> | <u>0033.111</u> | | | | |