

## LED Reflector Holder round with 5 mm LED



Housing chrome  
LED red  
Optionally with and without series resistor and with protruding LED or external reflector



Housing black dull  
LED red  
Exposed LED and external reflector



Housing black dull  
LED red  
Chalice shape with internal reflector



Housing chrome  
LED green  
Chalice shape with internal reflector

See below:

### Approvals and Compliances

#### Description

- Panel Mounting
- Illumination with 5 mm LED
- available with or without series resistor
- Housing chrome plated or black dull
- Solder terminals

#### Weblinks

[pdf data sheet](#), [html datasheet](#), [CAD-Drawings](#), [Detailed request for product](#)

#### Technical Data

##### Electrical Data

Current consumption	10 mA with Built-in Multiplier
LED	Technical data LED see separate table

##### Climatical Data

Allowable Operation Temp.	-25 to 55 °C
Storage Temperature	-55 to 100 °C
Protection Class	IP67

##### Soldering Data

Solderability	235 °C / 2 sec acc. to IEC 60068-2-20 , Test Ta, method 1
Resistance to Soldering Heat	350 °C / 5 sec acc. to IEC 60068-2-20 , Test Tb, method 1B

##### Material

Housing	Brass chrome-plated
Solder terminals	Tin-Plated Copper
Nut	Nickel-Plated Brass
Sealing	Nitril rubber

#### Technical Data LED

	LED red	LED green	LED yellow
Let-through current DC IF max.	30 mA	30 mA	30 mA
Power Loss PV max.	100 mW	100 mW	100 mW
Forward voltage	typ. 2.0 V; max. 3.0 V	typ. 2.4 V; max. 3.0 V	typ. 2.4 V; max. 3.0 V
Luminous intensity	min. 6.3 mcd; typ. 10 mcd	min. 6.3 mcd; typ. 10 mcd	min. 6.3 mcd; typ. 12 mcd
Viewing angle	60°	60°	60°
Peak wave length	typ. 635 nm	typ. 565 nm	typ. 585 nm
Reverse voltage	typ. 15 V	typ. 15 V	typ. 15 V

#### Approvals and Compliances

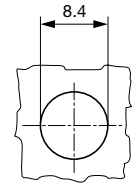
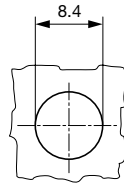
Detailed information on product approvals, code requirements, usage instructions and detailed test conditions can be looked up in [Details about Approvals](#)

SCHURTER products are designed for use in industrial environments. They have approvals from independent testing bodies according to national and international standards. Products with specific characteristics and requirements such as required in the automotive sector according to IATF 16949, medical technology according to ISO 13485 or in the aerospace industry can be offered exclusively with customer-specific, individual agreements by SCHURTER.

The product complies with following Guide Lines

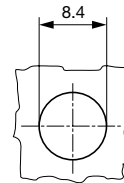
**Dimension [mm]**

### LFM without resistor with internal reflector




Technical drawing of a bolt assembly. The drawing shows a bolt with a hexagonal head and a threaded shank. The dimensions are as follows:

- Head diameter:  $\varnothing 10$
- Head width: max. 6
- Head thickness: 2
- Shank diameter: M8x0.75
- Shank length: 27
- Thread length: 4
- Distance from head to thread start: 10
- Distance from head to end of shank: max. 32
- Distance from head to end of thread: max. 5
- Distance from thread start to end of shank: 1.4
- Material: - Pol



Type	Multiplier	Housing	Supply Voltage	Color LED	Order Number
Internal Reflector	with	chrome-plated	24VDC	red	0035.0607
Internal Reflector	with	chrome-plated	24VDC	green	0035.0608
Internal Reflector	with	chrome-plated	24VDC	yellow	0035.0609
Outside Reflector	with	black dull	12VDC	red	0035.0664
Outside Reflector	with	black dull	12VDC	green	0035.0665
Outside Reflector	with	black dull	12VDC	yellow	0035.0666
Outside Reflector	with	black dull	24VDC	red	0035.0667
Outside Reflector	with	black dull	24VDC	green	0035.0668
Outside Reflector	with	black dull	24VDC	yellow	0035.0669
Internal Reflector	without	black dull	-	red	0035.0726
Internal Reflector	without	black dull	-	green	0035.0727

Type	Multiplier	Housing	Supply Voltage	Color LED	Order Number
Internal Reflector	without	black dull	-	yellow	0035.0728

 Most Popular.

Availability for all products can be searched real-time:<https://www.schurter.com/en/Stock-Check/Stock-Check-SCHURTER>

<b>Packaging unit</b>	50 pcs
-----------------------	--------

# Mouser Electronics

Authorized Distributor

Click to View Pricing, Inventory, Delivery & Lifecycle Information:

Schurter:

[0035.0607](#) [0035.0608](#) [0035.0609](#) [0035.0664](#) [0035.0665](#) [0035.0666](#) [0035.0667](#) [0035.0668](#) [0035.0669](#) [0035.0726](#)  
[0035.0727](#) [0035.0728](#)