

COMBIFIT

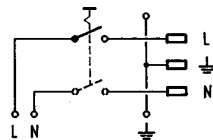
Pcb Mount, Snap-in or Screw-on • AC Inlet • AC Outlet
On / off Line Switch • Fuseholder for 5 x 20mm Fuses



NEW

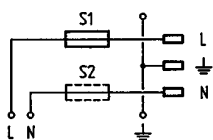


AC inlet / switch

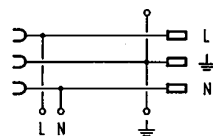


Medical
Fusedrawer

AC inlet / fuseholder



AC inlet / outlet



Complete **MULTIFIT** family on page 10

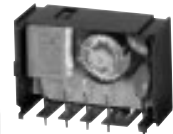
- Power entry module with line switch, fuseholder or inlet/outlet
- For "cold" connections 65° C, Protection Class I.
- Pcb mount with snap-in or screw-on feet (self-tapping M3 screws provided, \varnothing 3 x 8mm)
- Panel mount from rear or "sandwich" between top and bottom / side to side panels
- Single or double pole shocksafe fuseholder according to IEC 65/VDE 0860 for 5 x 20mm fuses
- Integral 1-pole SPST on/off line switch or 2-pole DPST switch (70A/3-4ms in-rush max.; 10,000 cycles lifetime)
- Insulation cover in back protects against inadvertent electric contact
- Ground terminal solder/quick-connect .187 x .032" (4.8 x 0.8mm) or .250 x .032" (6.3 x 0.8mm)
- 0.5 Nm screw torque required for screw-on type
- Max. power dissipation 3.2 watts (1-pole fusing) or 5 watts (2-pole fusing) according to IEC 127-6. For additional values P_v in function of T_{amb} , see page 6.
- For **materials**, options and accessories please see page 23
- For inlets with piggy-back **fuse clips** see GSF, page 13

		Inlet / switch	Inlet / outlet
UL	recognition	10A/250V ¹⁾ File #E96454	10A/250V File #E103791
CSA	certification	10A/250V ¹⁾ File #LR38456	10A/250V File #LR38456
VDE	approval	10A/250V ²⁾ File #83482	10A/250V File #83482
SEMKO	approval	10A/250V ²⁾	10A/250V File numbers on request
SEV	approval	10A/250V ²⁾	10A/250V

¹⁾ 10A/250V approval with 1/2 HP; 10A/125V approval with 1/3 HP
²⁾ 4A inductive load

		Inlet / fuseholder
UL	recognition	10A/250V File #E93617
CSA	certification	10A/250V File #LR38456
VDE	approval	10A/250V File #83482
SEMKO	approval	10A/250V File numbers on request
SEV	approval	10A/250V

Optional "back-pack"
FILTERFIT (see pg. 45)



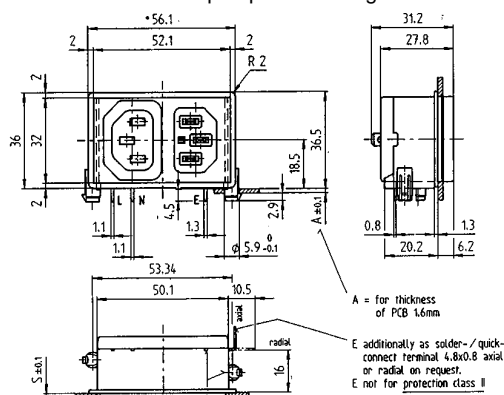
Optional "back-pack"
SURGEFIT (see pg. 45)



Cascading multi-function design
streamlines packaging

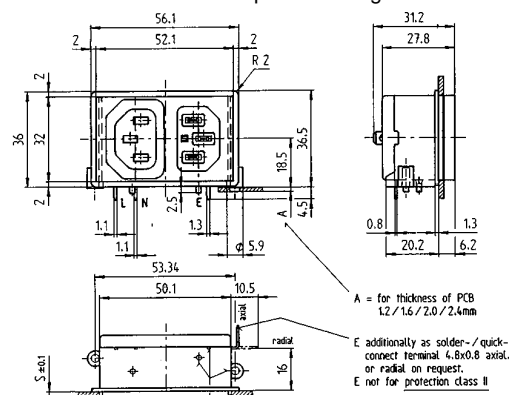
Standards: IEC 320/C14/F; IEC 127-6; EN 60320; EN 60127-6. Fusedrawer meets tool-only accessibility requirements of medical standards IEC 601-1, BS5724 part 1, DIN/VDE 0750 part 1.

Snap-in pcb mounting



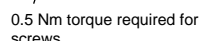
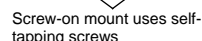
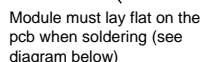
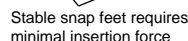
see next page for drilling diagram and panel cut-out

Screw-on pcb mounting

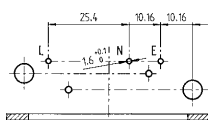


see next page for drilling diagram and panel cut-out

Printed circuit board mounting

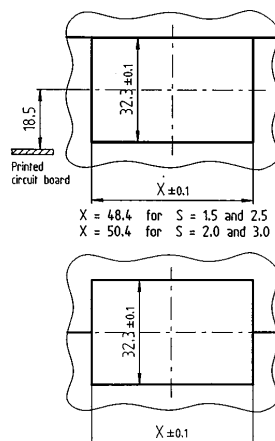
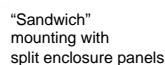
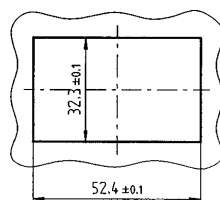


For 1-pole inlet/switch and
1-pole inlet/fuseholder



Tolerances not marked:
 $\leq 15 = \pm 0.05$
 $> 15 = \pm 0.1$

Insertion
from behind



KP01. 1 X X X . X X

- 0 = protection class II, without ground
- 1* = protection class I, solder/quick-connect
4.8 x 0.8mm, in connector axis
- 2 = protection class I, solder/quick-connect
6.3 x 0.8mm, in connector axis
- 6 = protection class I, solder/quick-connect
4.8 x 0.8mm, 90° to connector axis
- 7 = protection class I, solder/quick-connect
6.3 x 0.8mm, 90° to connector axis

0 = without switch

<u>non-illuminated</u>	<u>illuminated</u> 100- 250V~
1* = black	7* = red
2 = white	8* = green
3 = red	9 = orange
4 = green	
5 = orange	

– For snap-in Pcb mount (thickness 1.6 mm):
 11 = slot for panel, thickness S = 1.0mm
 12* = slot for panel, thickness S = 1.5 – 2.0mm
 13* = slot for panel, thickness S = 2.5 – 3.0mm
 14 = slot for panel, thickness S = 3.5 – 4.0mm
 15 = without slot for panel fixation

For screw-on Pcb mount (thickness 1.2-2.5mm):
With or without self-tapping screws, $\varnothing 3 \times 8\text{mm}$

With	Without	
51	61	panel thickness $S = 1.0\text{mm}$
52*	62	panel thickness $S = 1.5 - 2.0\text{mm}$
53*	63	panel thickness $S = 2.5 - 3.0\text{mm}$
54	64	panel thickness $S = 3.5 - 4.0\text{mm}$
55	65	panel thickness $S = 0$

0 = AC inlet with ac outlet
1 = AC inlet with on/off line switch, 2-pole
2 = AC inlet with on/off line switch, 1-pole
3 = AC inlet with fuseholder, 2-pole
4 = AC inlet with fuseholder, 1-pole

1* = black

KP01 = Power entry module for Pcb mounting,
SNAPFIT or SCREWFIT

* standard configuration. Contact Schurter for non-standard order minimums.

KP01.1112.11

Diagram illustrating the components of the power entry module assembly:

- Protection class I, solder/quick-connect ground terminal 4.8 x 0.8mm in connector axis
- Black unlighted rocker switch
- Snap-in pcb mounting (1.6mm pcb), with bezel for 1.5-2.0mm panel
- Combination ac inlet with on/off line switch (2-pole)
- Black housing
- Power entry module for pcb mounting

Mouser Electronics

Authorized Distributor

Click to View Pricing, Inventory, Delivery & Lifecycle Information:

Schurter:

[KP01.1052.06](#) [KP01.1112.86](#)