

Standards: IEC 320/C14/F; IEC 127-6; EN 60320; EN 60127-6. Fusedrawer meets tool-only accessibility requirements of medical standards IEC 601-1, BS5724 part 1, DIN/VDE 0750 part 1.

MULTIFIT

- Power entry module with line switch, fuseholder or inlet/outlet
- For "cold" connections 65° C, Protection Class I (with ground pin).
- Pcb mount with snap-in or screw-on feet (self-tapping M3 screws provided, \varnothing 3 x 8mm)
- Panel mount from rear or "sandwich" between top and bottom / side to side panels
- Single or double pole shocksafe fuseholder according to IEC 65/VDE 0860 for 5 x 20mm fuses
- Integral 1-pole SPST on/off line switch or 2-pole DPST switch (70A/3-4ms in-rush max.; 10,000 cycles lifetime)
- Insulation cover in back protects against inadvertent electric contact
- Ground terminal solder/pick-connect .187 x .032" (4.8 x 0.8mm) or .250 x .032" (6.3 x 0.8mm)
- 0.5 Nm screw torque required for screw-on type
- Max. power dissipation 2 watts (1-pole fusing) or 1.6 watts (2-pole fusing) according to IEC 127-6. For additional values P_v in function of T_{amb} , see page 5.
- For materials, options and accessories please see page 30
- For inlets with piggy-back fuse clips see GSF, page 13-14

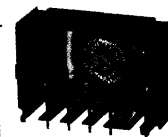
		<u>Inlet / switch</u>	<u>Inlet / outlet</u>	
UL	recognition	15A/250V ⁽¹⁾	File #E96454	10A/250V ⁽²⁾
CSA	certification	15A/250V ⁽¹⁾	File #LR38456	10A/250V ⁽²⁾
VDE	approval	10A/250V ⁽³⁾	File #83482	10A/250V
SEMKO	approval	10A/250V ⁽³⁾		10A/250V
SEV	approval	10A/250V ⁽³⁾		10A/250V

File #E103791
File #LR38456
File #83482
File numbers
on request

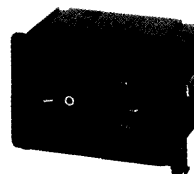
²⁾ 15A/250V pending ³⁾ 4A inductive load

		10A/250V perching	10A/250V inductive load
UL	recognition	10A/250V	File #E93617
CSA	certification	10A/250V	File #LR38456
VDE	approval	10A/250V	File #83482
SEMKO	approval	10A/250V	} File numbers on request
SEV	approval	10A/250V	

Optional "back-pack" filter
(see KPF, pg. 55)

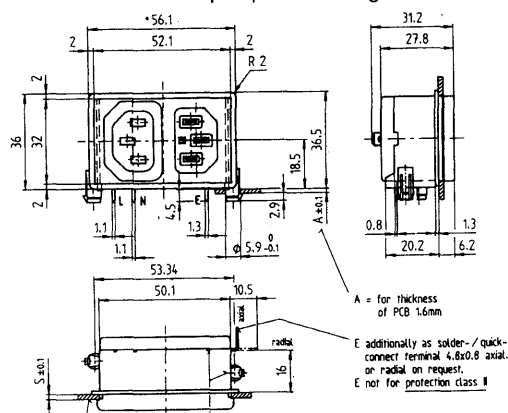


Optional “back-pack” surge protector (see KPS, pg. 55)



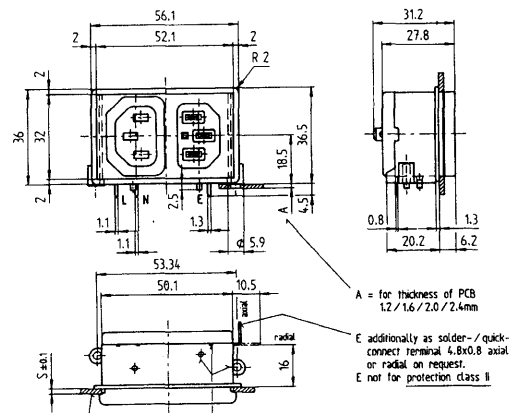
Cascading multi-function design streamlines packaging

Snap-in pcb mounting



see next page for drilling diagram and panel cut-out

Screw-on pcb mounting



see next page for drilling diagram and panel cut-out

Mouser Electronics

Authorized Distributor

Click to View Pricing, Inventory, Delivery & Lifecycle Information:

Schurter:

[KP01.1112.81](#)