

Metal Switch Short Stroke Ring Illuminated



See below:  
[Approvals and Compliances](#)

**Description**

- Momentary switch available in version ring illumination and Lettering Assembly by mounting with nut
- Flexible wire connection

**Unique Selling Proposition**

- Flat front design metal made
- Switching voltage 48 VDC, switching current 125 mA
- With multicolor ring illumination

**Characteristics**

- Housing material: aluminum or stainless steel, actuator material types: zinc die-cast or stainless steel
- for use in harsh environments (see technical data)

**Weblinks**

[html-datasheet](#), [General Product Information](#), [CAD-Drawings](#), [Product News](#), [Detailed request for product](#), [Microsite](#)

**Technical Data**

**Electrical Data**

Supply Voltage	LED operating data are listed in separate table
Supply Voltage Ring Illumination	24 VDC, Multicolor: 5 - 28 VDC
Switching Voltage	min. 4 VDC , max. 48 VDC
Switching Current	max. 125 mA
Rated Switching Capacity	1.2 W
Lifetime	1 million actuations at Rated Switching Capacity
Contact Resistance	< 50mΩ, < 150 mΩ
Insulation Resistance	> 100 MΩ
Duration of Bounce	< 5 ms

**Mechanical Data**

Actuating Force	3.7 N
Actuating Travel	0.4 mm,
Lifetime	1 million actuations
Shock Protection	IK 05 ,

**Climatical Data**

Operating Temperature	-20 to +60 °C
Storage Temperature	-20 to +60 °C
Protection Class	IP 65
Switching Unit	IP 65
Salt Spray Test (acc. to DIN 50021-SS)	24 h / 48 h / 96 h Residence Time

**Material**

Contact Material	Ag
Housings	Aluminium anodized
Finger Guide	Zinc Die Casting Nickel Plated
Actuator unlettered	Zinc Die Casting Nickel Plated
Actuator lettered	Stainless Steel

**Approvals and Compliances**

Detailed information on product approvals, code requirements, usage instructions and detailed test conditions can be looked up in [Details about Approvals](#)

**Application standards**

Application standards where the product can be used

Organization	Design	Standard	Description
	Designed for applications acc.	IEC/UL 60950	IEC 60950-1 includes the basic requirements for the safety of information technology equipment.

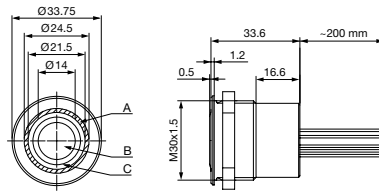
**Compliances**

The product complies with following Guide Lines

Identification	Details	Initiator	Description
	RoHS	SCHURTER AG	EU Directive RoHS 2011/65/EU
	REACH	SCHURTER AG	On 1 June 2007, Regulation (EC) No 1907/2006 on the Registration, Evaluation, Authorization and Restriction of Chemicals 1 (abbreviated as "REACH") entered into force.

## Dimension [mm]

MCS 30 RI



Legend:

A = Illumination Area

B = Actuating Area

C = Finger Guide

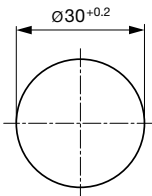
Lettering:

- optional with/without lettering

- location of the wires to the location of the lettering is not defined

## Dimension

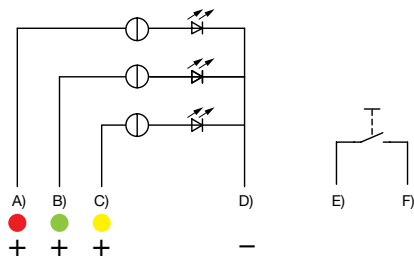
Front Panel Drilling MCS 30 RI



Drilling diagram

## Diagrams

MCS 30 RI RGY

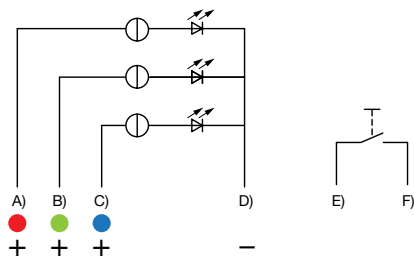


- A) Cable (color of the LED), Supply voltage
- B) Cable (color of the LED), Supply voltage
- C) Cable (color of the LED), Supply voltage
- D) Cable (black), Common mass
- E) Cable (white), Input and output MCS switch
- F) Cable (white), Input and output MCS switch

Illumination options for RGY

Lighting type	Active terminal A) <span style="color: red;">●</span>	Active terminal B) <span style="color: green;">●</span>	Active terminal C) <span style="color: yellow;">●</span>	Resulting Color
Multicolor Singlecolor	A			Red <span style="color: red;">●</span>
Multicolor Singlecolor		B		Green <span style="color: green;">●</span>
Multicolor Singlecolor			C	Yellow <span style="color: yellow;">●</span>

MCS 30 RI Multicolor



- A) Cable (color of the LED), Supply voltage
- B) Cable (color of the LED), Supply voltage
- C) Cable (color of the LED), Supply voltage
- D) Cable (black), Common mass
- E) Cable (white), Input and output MCS switch
- F) Cable (white), Input and output MCS switch

Illumination options for Multicolor

Lighting type	Active terminal A) <span style="color: red;">●</span>	Active terminal B) <span style="color: green;">●</span>	Active terminal C) <span style="color: blue;">●</span>	Resulting Color
Multicolor Singlecolor	A			Red <span style="color: red;">●</span>
Multicolor Singlecolor		B		Green <span style="color: green;">●</span>
Multicolor Singlecolor			C	Blue <span style="color: blue;">●</span>
Multicolor RGB Additive 2	A	B		Yellow <span style="color: yellow;">●</span>
Multicolor RGB Additive 2	A		C	Magenta <span style="color: magenta;">●</span>
Multicolor RGB Additive 2		B	C	Cyan <span style="color: cyan;">●</span>
Multicolor RGB Additive 3	A	B	C	White <span style="color: white;">○</span>

### Lettering





The last three digits in the order number define the lettering:

000	No Lettering
001-074	Standard Lettering
101-	Customized Lettering

### Lettering Colour of Laser Lettering

Material	Lettering Colour	
Stainless Steel	black	Filled letters

### Order Index Lettering

Laser Marking			
001 = <b>A</b>	021 = <b>U</b>	041 = ÷	061 = <b>EIN</b>
002 = <b>B</b>	022 = <b>V</b>	042 = *	062 = <b>AUS</b>
003 = <b>C</b>	023 = <b>W</b>	043 = =	063 = <b>AUF</b>
004 = <b>D</b>	024 = <b>X</b>	044 = #	064 = <b>AB</b>
005 = <b>E</b>	025 = <b>Y</b>	045 = ↔	065 = <b>ON</b>
006 = <b>F</b>	026 = <b>Z</b>	046 = †	066 = <b>OFF</b>
007 = <b>G</b>	027 = <b>0</b>	047 = →	067 = <b>UP</b>
008 = <b>H</b>	028 = <b>1</b>	048 = ←	068 = <b>DOWN</b>
009 = <b>I</b>	029 = <b>2</b>	049 = ↓	069 = <b>HIGH</b>
010 = <b>J</b>	030 = <b>3</b>	050 = ↑	070 = <b>LOW</b>
011 = <b>K</b>	031 = <b>4</b>	051 = %	071 = <b>ON/OFF</b>
012 = <b>L</b>	032 = <b>5</b>	052 = √	072 = <b>START</b>
013 = <b>M</b>	033 = <b>6</b>	053 = <b>CTRL</b>	073 = <b>RESET</b>
014 = <b>N</b>	034 = <b>7</b>	054 = <b>RETURN</b>	074 = 
015 = <b>O</b>	035 = <b>8</b>	055 = <b>SHIFT</b>	075 = 
016 = <b>P</b>	036 = <b>9</b>	056 = <b>LOCK</b>	076 = 
017 = <b>Q</b>	037 = <b>+</b>	057 = <b>STOP</b>	077 = 
018 = <b>R</b>	038 = <b>-</b>	058 = <b>ENTER</b>	
019 = <b>S</b>	039 = <b>.</b>	059 = <b>BACK</b>	
020 = <b>T</b>	040 = <b>x</b>	060 = <b>LINE</b>	

### All Variants

Housing Material	Finger guide Material	Actuator Material	Lettering	Illumination, LED	Config. Code	Bestellnummer
Aluminum	Zinc Diecasting	Zinc Diecasting	lettering not possible	Ring Illumination, red, 24 VDC	MCS 30 RI	<a href="#">1241.6400</a>
Aluminum	Zinc Diecasting	Zinc Diecasting	lettering not possible	Ring Illumination, green, 24 VDC	MCS 30 RI	<a href="#">1241.6401</a>
Aluminum	Zinc Diecasting	Zinc Diecasting	lettering not possible	Ring Illumination, yellow, 24 VDC	MCS 30 RI	<a href="#">1241.6402</a>
Aluminum	Zinc Diecasting	Zinc Diecasting	lettering not possible	Ring Illumination, red / green, 24 VDC	MCS 30 RI	<a href="#">1241.6403</a>
Aluminum	Zinc Diecasting	Zinc Diecasting	lettering not possible	Ring Illumination, blue, 24 VDC	MCS 30 RI	<a href="#">1241.6404</a>
Aluminum	Zinc Diecasting	Stainless Steel	lettering possible	Ring Illumination, red, 24 VDC	MCS 30 RI	<a href="#">1241.6405</a>
Aluminum	Zinc Diecasting	Stainless Steel	lettering possible	Ring Illumination, green, 24 VDC	MCS 30 RI	<a href="#">1241.6406</a>
Aluminum	Zinc Diecasting	Stainless Steel	lettering possible	Ring Illumination, yellow, 24 VDC	MCS 30 RI	<a href="#">1241.6407</a>
Aluminum	Zinc Diecasting	Stainless Steel	lettering possible	Ring Illumination, red / green, 24 VDC	MCS 30 RI	<a href="#">1241.6408</a>

Housing Material	Finger guide Material	Actuator Material	Lettering	Illumination, LED	Config. Code	Bestellnummer
Aluminum	Zinc Diecasting	Zinc Diecasting	lettering not possible	Ring Illumination, white, 24 VDC	MCS 30 RI	1241.6437
Aluminum	Zinc Diecasting	Zinc Diecasting	lettering not possible	Ring Illumination, multicolor, 5 - 28 VDC	MCS 30 RI	1241.6454
Aluminum	Zinc Diecasting	Zinc Diecasting	lettering not possible	Ring Illumination, RGY, 5 - 28 VDC	MCS 30 RI	1241.6455
Stainless Steel	Stainless Steel	Stainless Steel	lettering possible	Ring Illumination, multicolor, 5 - 28 VDC	MCS 30 RI	1241.6456

The MCS 30 switch versions "Lettering possible" can be lettered according to the lettering indices.

The MOQ for standard laser lettering on standard variants is 10 pieces.

The contact material is silver

Terminal: wire 200 mm

Nut with gasket are enclosed in the box.

Most Popular.

Availability for all products can be searched real-time: <https://www.schurter.com/en/Stock-Check/Stock-Check-SCHURTER>

**Packaging unit** 20 in cardboard box packed in air cushion bag



- Actuating elements in ESD safe packaging
- Screw nuts and sealing rings in a bag (enclosed in the box)

**Accessories**

**Description**



**Power Supply**  
 Power Supply IP42 for LED- and Illumination applications indoor 90~264 VAC => 24 VDC 0.34 A 8 W

# Mouser Electronics

Authorized Distributor

Click to View Pricing, Inventory, Delivery & Lifecycle Information:

[Schurter:](#)

[1241.6407](#)