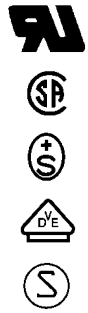
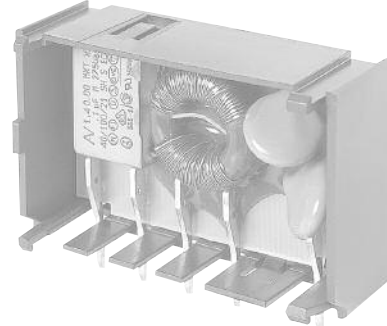
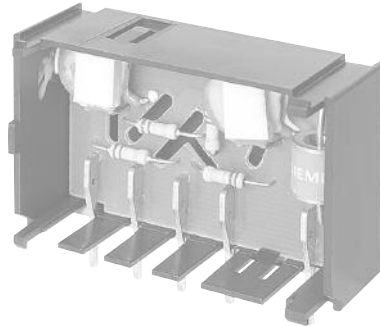


## KP (Switch)

Actual information about approvals can be found on  
<http://www.schurter.com/approvals>



Inlet with line switch

C14



70° C

### Description

- Panel Mount:  
Sandwich or rear-side
- 2 Functions:  
Inlet Protection class I, Line switch 1- and 2- pole
- For PCB mounting
- Alternative: version with line filter [KPF](#); [KPS](#)
- We recommend for new applications type [DC21](#)

### Characteristics

- Panel mount from rear or "sandwich" between top and bottom/side to side panels  
PCB mount with snap-in or screw-on <BREAK/> feet (self tapping screws Ø 3 x 8 mm)
- All single elements are already wired
- Line switch non-illuminated
- Insulation cover on the rear-side
- Qualified for use in equipment according IEC/EN 60950

### Other versions on request

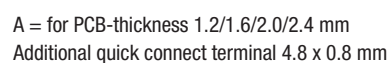
- solder terminals
- Quick-connect terminals
- line switch, illuminated (only 2-pole version)
- line switch with other rocker marking
- for protection class II

### Technical Data

Ratings IEC	10 A / 250 VAC; 50 Hz
Ratings UL/CSA	15 A / 250 VAC; 60 Hz
Dielectric Strength	> 2.3 kVAC between L-N > 2.8 kVAC between L/N-PE (1 min/50 Hz)
Allowable operation temp.	-25 °C to 70 °C
Degree of Protection	from front side IP 40 acc. to IEC 60529
Protection Class	Suitable for appliances with protection class I acc. to IEC 61140
Terminals	For PCB mounting Quick connect terminals 4.8 x 0.8 mm Solder terminal on request
Panel Thickness s	Snap-In: 1.5/2/2.5/3 mm
Material: Housing	Thermoplastic, Black, UL 94V-0

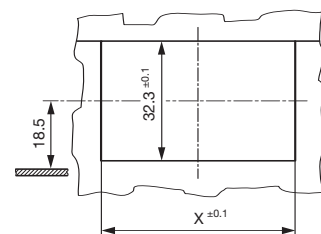
Appliance-inlet /-outlet	C14 acc. to IEC/EN 60320-1, UL 498, CSA C22.2 no. 42 (for cold condition) pin-temperature 70 °C, 10 A, Protection class I
Line switch	Rocker switch 1- or 2-pole, non-illuminated, acc. to IEC 61058-1 Technical details <a href="#">POWER ENTRY MODULES WITHOUT LINE FILTER</a>

### Screw on PCB mounting



Mounting holes for backside mounting

## Sandwich mounting holes

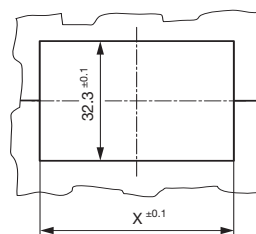


X = 48.4 at S = 1.5 and 2.5  
X = 50.4 at S = 2.0 and 3.0



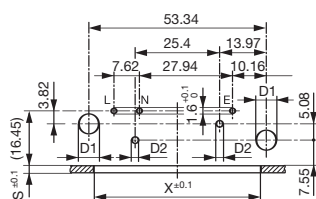
Additional quick connect terminal 4.8 x 0.8 mm  
s = panel thickness

### Sandwich mounting holes

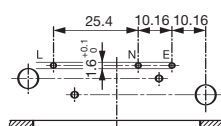


X = 48.4 at S = 1.5 and 2.5  
X = 50.4 at S = 2.0 and 3.0

For 2-pole inlet/switch, 2-pole inlet/fuseholder and inlet/outlet



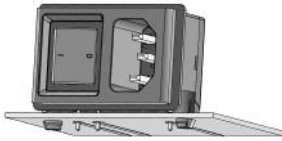
For 1-pole inlet/switch and 1-pole  
inlet/fuseholder  
S and X see mounting holes



Other dimensions as for 2-poles  
 $d1 = 6 \pm 0.05$  for (snap-in)  
 $d1 = 3.6$  (screw-on)  
 $d2 = 2 \pm 0.1$  (screw-on)  
 Dimensions without tolerance:  
 $\leq 15 = \pm 0.05$ ;  $\geq 15 = \pm 0.1$

## KP (Switch)

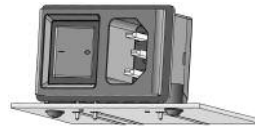
### Mounting instructions



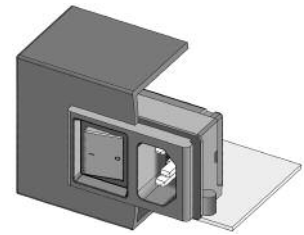
Stable snap feet requires minimal insertion force



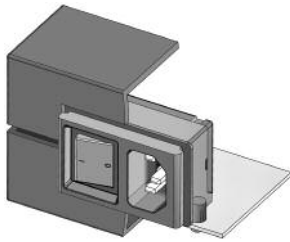
Module must lay flat on the PCB when soldering



Screw-on mount uses self-tapping screws

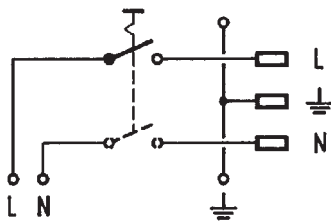


Insertion from behind



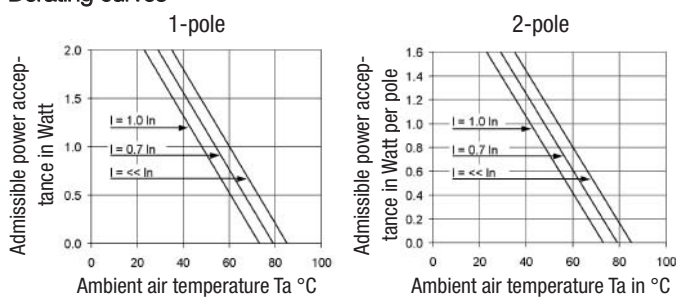
"Sandwich" mounting with split enclosure panels

### Diagrams



Inlet with line switch

### Derating curves



### Variants

Order Number	Panel mounting	Panel Thickness s [mm]	PCB [mm]	Line switch	Fuseholder	Appliance outlet
KP01.1112.16				1- or 2-pole		
KP01.1115.11				1- or 2-pole		
KP01.1153.1190				1- or 2-pole		
KP01.1212.16				1- or 2-pole		
KP01.1212.11	Snap-In	2	1.6	1-pole		
KP01.1112.11	Snap-In	2	1.6	2-pole		
KP01.1213.11	Snap-In	3	1.6	1-pole		
KP01.1113.11	Snap-In	3	1.6	2-pole		
KP01.1252.11	Screw-on	2	1.2/1.6/2.0/2.4	1-pole		
KP01.1152.11	Screw-on	2	1.2/1.6/2.0/2.4	2-pole		

**KP (Switch)**

Order Number	Panel mounting	Panel Thickness s [mm]	PCB [mm]	Line switch	Fuseholder	Appliance outlet
KP01.1253.11	Screw-on	3	1.2/1.6/2.0/2.4	1-pole		
KP01.1153.11	Screw-on	3	1.2/1.6/2.0/2.4	2-pole		

Packaging unit	50 Pcs
----------------	--------

# Mouser Electronics

Authorized Distributor

Click to View Pricing, Inventory, Delivery & Lifecycle Information:

Schurter:

[KP01.1115.11](#)