

Product availability: Non-Stock - Not normally stocked in distribution facility



Main

| | |
|------------------------------|-------------------------------------|
| Range of product | OsiSense XCC |
| Encoder type | Multiturn absolute encoder |
| Device short name | XCC |
| Product specific application | - |
| Diameter | 2.28 in (58 mm) |
| Shaft diameter | 0.39 in (10 mm) |
| Shaft type | Solid shaft |
| Resolution | 4096 turns/8192 points |
| Electrical connection | 1 male connector M23 radial 12 pins |
| Output stage | Type SB |
| Type of output stage | SSI 25-bit binary |
| [Us] rated supply voltage | 11...30 V DC |
| Enclosure material | Steel |

Complementary

| | |
|--------------------------|---|
| Residual ripple | 500 mV |
| Maximum revolution speed | 6000 rpm |
| Shaft moment of inertia | 0 lb.in ² (10 g.cm ²) |
| Torque value | 0.04 lbf.in (0.004 N.m) |
| Maximum load | 10 daN radial 5 daN axial |
| Output frequency | 100...500 kHz |
| Current consumption | 0...100 mA no-load |
| Protection type | Reverse polarity protection Short-circuit protection |
| Physical interface | RS422 |
| Output level | High level: 2 V minimum 20 mA |
| Surge withstand | 1 kV level 2 IEC 61000-4-5 |
| Base material | Aluminium |
| Shaft material | Stainless steel |
| Type of ball bearings | 6900ZZ1 |
| Product weight | 1.51 lb(US) (0.685 kg) |


Environment

| | |
|---------------------------------------|--|
| Marking | CE |
| Ambient air temperature for operation | -4...185 °F (-20...85 °C) |
| Ambient air temperature for storage | -4...185 °F (-20...85 °C) |
| IP degree of protection | IP65 IEC 60529 |
| Vibration resistance | 10 gn (10...2000 Hz) IEC 60068-2-6 |
| Shock resistance | 30 gn (11 ms) IEC 60068-2-27 |
| Resistance to electrostatic discharge | 4 kV contact discharge level 3 IEC 61000-4-2 8 kV air discharge level 3 IEC 61000-4-2 |
| Resistance to electromagnetic fields | 9.14 V/yd (10 V/m) level 3 IEC 61000-4-3 |
| Resistance to fast transients | 1 kV signal ports level 3 IEC 61000-4-4 2 kV power ports level 3 IEC 61000-4-4 |

Ordering and shipping details

| | |
|-----------------------|----------------------------|
| Category | 22486 - SENSORS, PROXIMITY |
| Discount Schedule | DS2 |
| GTIN | 003389119056250 |
| Nbr. of units in pkg. | 1 |
| Package weight(Lbs) | 1.51 |
| Returnability | N |
| Country of origin | FR |

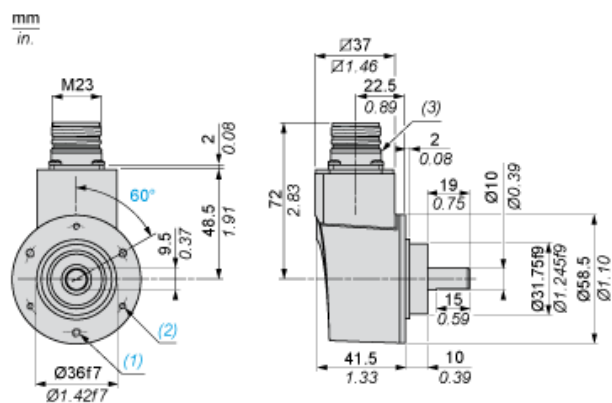
Offer Sustainability

| | |
|----------------------------|--|
| RoHS (date code: YYWW) | Compliant - since 0701 - Schneider Electric declaration of conformity  Schneider Electric declaration of conformity |
| REACH | Reference not containing SVHC above the threshold |
| California proposition 65 | WARNING: This product can expose you to chemicals including: |
| - - - - - Substance 1 | Diisononyl phthalate (DINP), which is known to the State of California to cause cancer, and |
| - - - - - Substance 2 | Di-isodecyl phthalate (DIDP), which is known to the State of California to cause birth defects or other reproductive harm. |
| - - - - - More information | For more information go to www.p65warnings.ca.gov |

Contractual warranty

| | |
|-----------------|-----------|
| Warranty period | 18 months |
|-----------------|-----------|

Dimensions

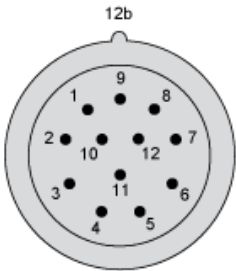


- (1) 3 M4 holes at 120° on 48 PCD, depth: 8 mm
- (2) 3 M3 holes at 120° on 48 PCD, depth: 8 mm
- (3) Nitrile seal



Wiring Diagram

M23, 12-pin Connector, Anticlockwise Connections

Male Connector on Encoder



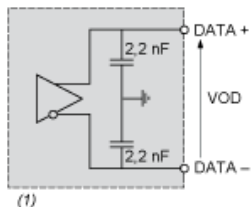
| Pin number | 1 | 2 | 3 | 4 | 5 | 6 | 7 | 8 | 9 | 10 | 11 | 12 |
|---------------|-----|--------|-------|---|------------------|---------------|---|-----|---|--------|-------|----|
| Signal Supply | 0 V | Data + | Clk + | R | Direction (1) | Reset to zero | R | + V | R | Data - | Clk - | R |

(1)  : Clockwise direction
 : Anticlockwise direction

R = Reserved (do not connect)

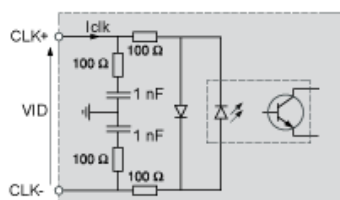
Technical Description

RS 422 Data Output



(1) $I_{data} = 20 \text{ mA}$ $|VOD| > 2 \text{ V}$

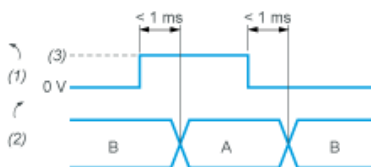
Isolated Clock Input



VID maximum: 5 V

Iclk maximum: 15 mA

DIRECTION Input



A : Anticlockwise

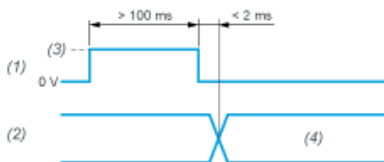
B : Clockwise

(1) DIRECTION input

(2) DIRECTION of counting

(3) V supply

Input Stage - Reset to Zero



(1) Reset input

(2) Position

(3) V supply

(4) Position=0 (Reset to zero)

Mouser Electronics

Authorized Distributor

Click to View Pricing, Inventory, Delivery & Lifecycle Information:

[Schneider Electric:](#)

[XCC3510PS84SBN](#)