

Product availability: Stock - Normally stocked in distribution facility



Main

Range of product	Modicon M171
Product or component type	Communication module
Communication port protocol	Modbus RTU BACnet MS/TP RS485

Complementary

Integrated connection type	RS485 wire crimp - twisted pair
Adjustment	Pitch 3.81 mm
Electrical connection	Removable screw terminal block
Physical interface	90° insertion - 0 in ² (2.5 mm ²) cable
Supply	Via base board EVD/EVC
Product compatibility	Logic controller M171 performance Logic controller M172 performance
Product weight	0.17 lb(US) (0.077 kg)


Environment

Product certifications	CE CSA CURus EAC
Marking	CE
IP degree of protection	IP20
Ambient air temperature for operation	14...131 °F (-10...55 °C)
Ambient air temperature for storage	-4...185 °F (-20...85 °C)
Relative humidity	10...90 % without condensation

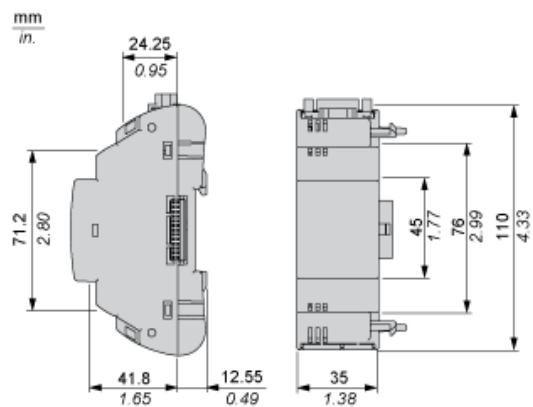
Ordering and shipping details

Category	22537 - M171 / M172 HVAC CONTROLLERS
Discount Schedule	PC12
GTIN	00785901534198
Nbr. of units in pkg.	1
Package weight(Lbs)	0.40000000000000002
Returnability	Y
Country of origin	IT

Offer Sustainability

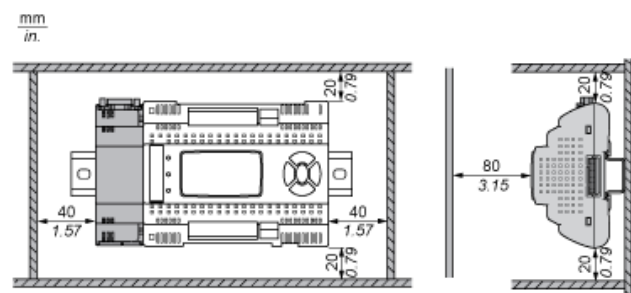
RoHS (date code: YYWW)	Compliant - since 1429 - Schneider Electric declaration of conformity  Schneider Electric declaration of conformity
REACH	Reference not containing SVHC above the threshold
California proposition 65	WARNING: This product can expose you to chemicals including:
- - - - - Substance 1	Lead and lead compounds which is known to the State of California to cause cancer and birth defects or other reproductive harm.
- - - - - More information	For more information go to www.p65warnings.ca.gov

Dimensions

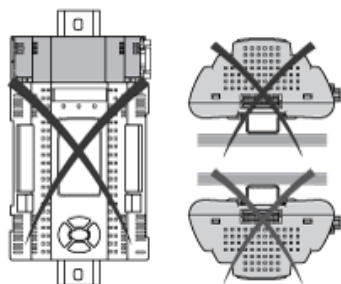


Mounting and Clearance

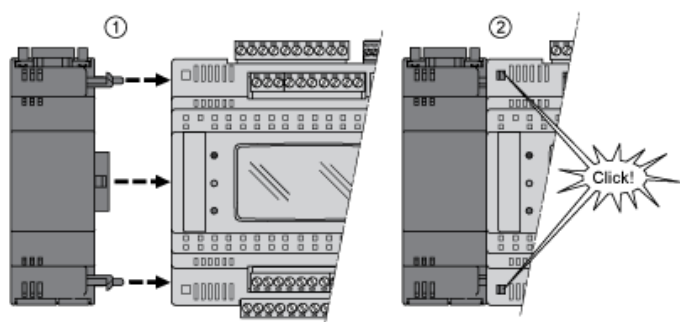
Clearance



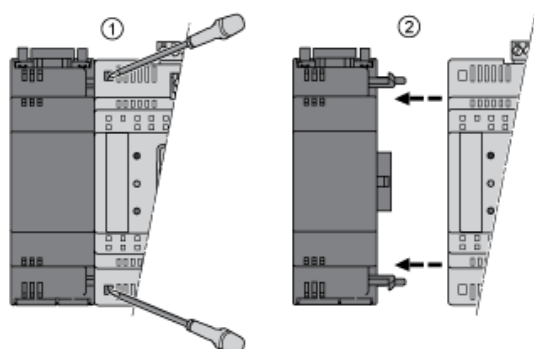
Misplacement



Mounting on Controller



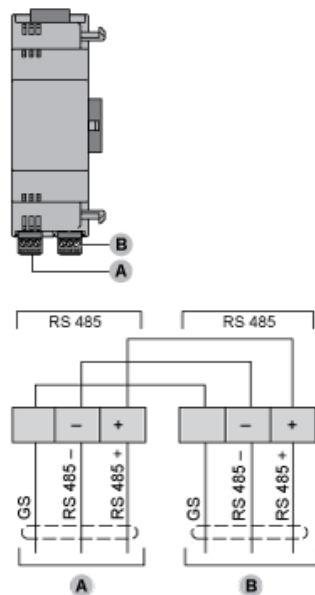
Dismounting



Connections and Schema

RS 485 Communication Module

TM171ARS485



Mouser Electronics

Authorized Distributor

Click to View Pricing, Inventory, Delivery & Lifecycle Information:

[Schneider Electric:](#)

[TM171ARS485](#)