

Product availability: Stock - Normally stocked in distribution facility



### Main

Range of product	Modicon M171/M172
Product or component type	Additional I/O module
Product specific application	HVAC and pumping solution
Total inputs/outputs	14
Discrete input number	4
Discrete output number	1For relay outputs SPDT with independent common 3For relay outputs SPST with same common
Discrete output current	3 AFor relay
Analogue input number	4 configurable by pair
Analogue output number	2 voltage 0...10 V


### Complementary

Number of port	1 CAN port - screw terminal block
Input/output number	2 analog output(s) 4 digital output(s) 4 analog input(s) 4 digital input(s)
Discrete input logic	Sink or source (positive/negative)
Discrete input voltage	24 V AC/DC
Discrete input current	2.5 mA
Input impedance	20 kOhm
Analogue input type	Voltage 0...5 V (ratiometric) NTC temperature probe - 50...110 °C - resolution: 0.1 °C NTC temperature probe - 40...137 °C - resolution: 0.1 °C (extended) PTC temperature probe - 50...150 °C - resolution: 0.1 °C Current 4...20 mA Voltage 0...10 V
Sensor power supply	12 V DC at 85 mA
[Us] rated supply voltage	24 V

### Ordering and shipping details

Category	22537 - M171 / M172 HVAC CONTROLLERS
Discount Schedule	PC12
GTIN	00785901614111
Nbr. of units in pkg.	1
Package weight(Lbs)	0.5100000000000001
Returnability	Y
Country of origin	IT

### Offer Sustainability

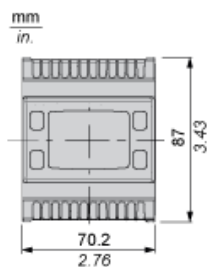
Sustainable offer status	Green Premium product
RoHS (date code: YYWW)	Compliant - since 1438 - Schneider Electric declaration of conformity  Schneider Electric declaration of conformity
REACH	Reference not containing SVHC above the threshold
Product environmental profile	Available
Product end of life instructions	Available
California proposition 65	WARNING: This product can expose you to chemicals including:

----- Substance 1	Lead and lead compounds which is known to the State of California to cause cancer and birth defects or other reproductive harm.
----- More information	For more information go to <a href="http://www.p65warnings.ca.gov">www.p65warnings.ca.gov</a>

---

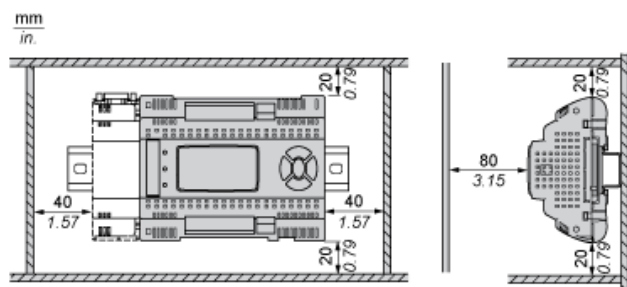
Dimensions

---

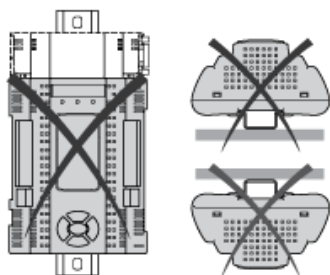


## Mounting and Clearance

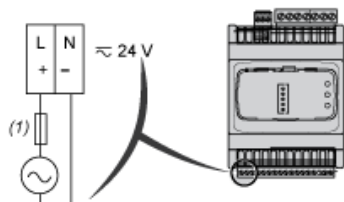
### Clearance



### Misplacement

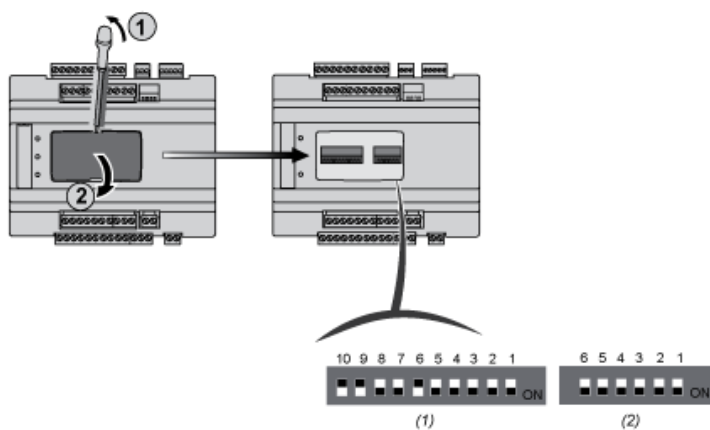


## Power Supply



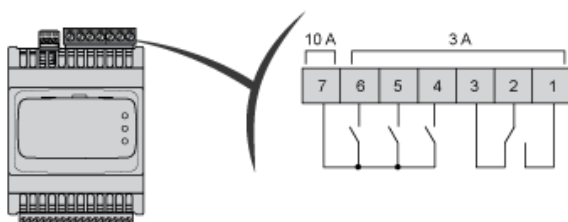
(1) Type T fuse 1.25 A

## 6 - 10 DipSwitches



(1) 10 DIP SWITCH  
(2) 6 DIP SWITCH

## Digital Outputs

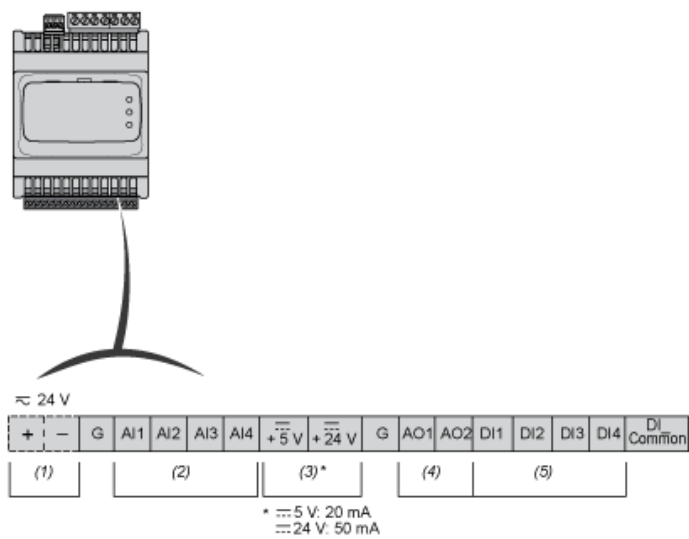


N°	Pin -out
1	DO1-N.O.
2	COMMON DO1
3	DO1-N.C.
4	DO2-N.O.
5	DO3-N.O.
6	DO4-N.O.
7	Common DO2, DO3,DO4

N.C.: Normally Closed

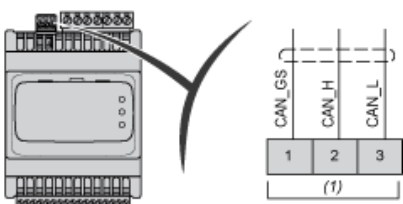
N.O.: Normally Open

Low Voltage I/O



- (1) Power Supply
- (2) Analog Input
- (3) Power Out
- (4) Analog Output
- (5) Digital Input

Expansion Bus (CAN)



- (1) CAN

4 DipSwitches



- (1) LOW Address

# Mouser Electronics

Authorized Distributor

Click to View Pricing, Inventory, Delivery & Lifecycle Information:

[Schneider Electric:](#)

[TM171EP14R](#)