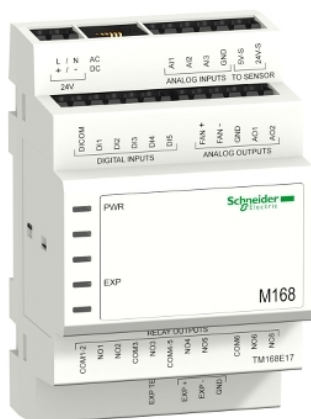


# Product data sheet

## Characteristics

# TM168AVCM

## Battery charger for M168 electronic expansion valve module



### Main

Range of Product	Modicon M168 logic controller
Accessory / separate part category	Electrical accessories
Accessory / Separate Part Type	Battery charger
Product or Component Type	Battery charger
Product Compatibility	TM168.EVCM..
Product Specific Application	Control of electronic expansion valve module Backup energy in case of power failure

### Complementary

Electrical connection	<= 1.5 mm <sup>2</sup> removable screw terminal block power supply) <= 1.5 mm <sup>2</sup> removable screw terminal block electronic expansion valve module)
Net Weight	0.43 lb(US) (0.197 kg)

### Environment

IP Degree of Protection	IP20
Operating altitude	0...6561.68 ft (0...2000 m)
Pollution degree	2
Overvoltage category	III
Marking	CE
Width	2.80 in (71 mm)
Height	5.04 in (128 mm)
Depth	2.36 in (60 mm)

### Ordering and shipping details

Category	22535 - M168 HVAC CONTROLLER
Discount Schedule	PC12
GTIN	3595864109640
Nbr. of units in pkg.	1
Package weight(Lbs)	10.93 oz (310 g)
Returnability	No
Country of origin	FR

### Packing Units

Unit Type of Package 1	PCE
Package 1 Height	3.15 in (8 cm)
Package 1 width	4.33 in (11 cm)
Package 1 Length	6.10 in (15.5 cm)

### Contractual warranty

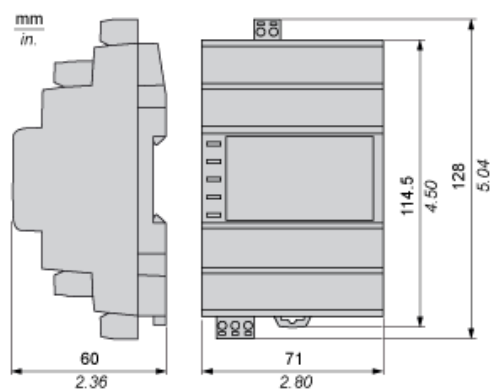
Warranty	18 months
----------	-----------

---

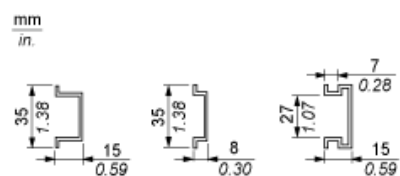
Battery Backup Module for Electronic Expansion Valve Module

---

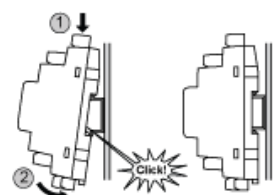
Dimensions



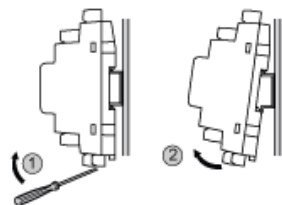
## Mounting and Clearance



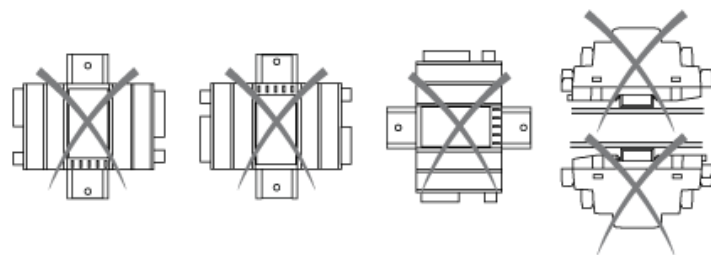
### Mounting



### Dismounting

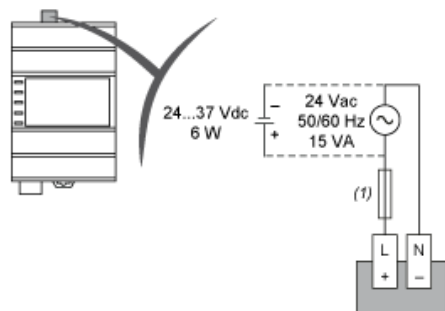


### Misplacement



## Power Supply

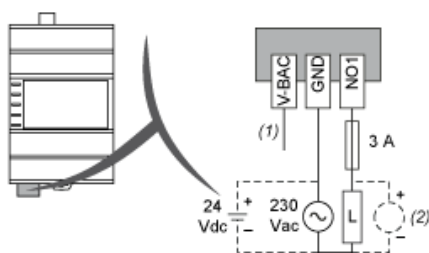
### Wiring Diagram



(1) 1 A Type T 250 V AC

## Backup Power Supply

### Wiring Diagram



(1) To TM168•EVCM••, terminal V-BAC  
(2) Protection for inductive load



# Mouser Electronics

Authorized Distributor

Click to View Pricing, Inventory, Delivery & Lifecycle Information:

[Schneider Electric:](#)

[TM168AVCM](#)