

Product data sheet

Characteristics

9001KN279

legend - Ø 30 - 40 x 43 mm - PULL TO START/ PUSH TO STOP

Product availability: Non-Stock - Not normally stocked in distribution facility



Main

Range of product	Harmony 9001K
Accessory / separate part type	Legend plate
Accessory / separate part category	Marking accessory
Accessory / separate part destination	Control and signalling units Ø 30 mm (metal range)
Label dimensions	40 x 43 mm
Marking	White PULL TO START/PUSH TO STOP on black background
Language	English

Complementary

Mounting diameter	1.18 in (30 mm)
Material	Aluminium
Product weight	0.01 lb(US) (0.005 kg)

Ordering and shipping details

Category	21433 - 9001 ACCESS FOR K,KX,SK
Discount Schedule	CS1
GTIN	003389110946277
Nbr. of units in pkg.	1
Package weight(Lbs)	0.01
Returnability	N
Country of origin	MX

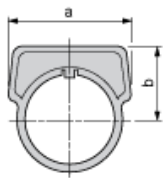
Offer Sustainability

RoHS (date code: YYWW)	Compliant - since 0840 - Schneider Electric declaration of conformity Schneider Electric declaration of conformity
REACH	Reference not containing SVHC above the threshold
California proposition 65	WARNING: This product can expose you to chemicals including:
- - - - - Substance 1	Nickel compounds, which is known to the State of California to cause cancer, and
- - - - - Substance 2	Di-isodecyl phthalate (DIDP), which is known to the State of California to cause birth defects or other reproductive harm.
- - - - - More information	For more information go to www.p65warnings.ca.gov

Contractual warranty

Warranty period	18 months
-----------------	-----------

Dimensions



a		b	
mm	in.	mm	in.
41.3	1.62	24.6	0.97

Mouser Electronics

Authorized Distributor

Click to View Pricing, Inventory, Delivery & Lifecycle Information:

[Schneider Electric:](#)

[9001KN279](#)