

Product availability: Non-Stock - Not normally stocked in distribution facility



## Main

Range of product	Advantys Telefast ABE7
Product or component type	Plug-in solid state relay
Relay type	Output relay
Quantity per set	Set of 4


## Complementary

Response time	<= 0.1 ms from state 0 to 1 <= 0.6 ms from state 1 to 0
Width pitch dimension	0.47 in (12 mm)
Product compatibility	ABE7P16T318 ABE7P16T318E ABE7P16T330 ABE7P16T330E ABE7P16T334 ABE7R16T330 ABE7R16T332
Discrete input voltage	24 V DC
Discrete output voltage	5..48 V DC
Discrete output current	1500 mA
Current state 0 guaranteed	0.4 mA DC
Current state 1 guaranteed	2.9 mA DC
Voltage state 0 guaranteed	3.8 V DC
Voltage state 1 guaranteed	18.6 V DC
Product weight	0.04 lb(US) (0.016 kg)

## Ordering and shipping details

Category	22375 - INTERFACE MODULE(ABA,R,S)
Discount Schedule	CP2
GTIN	00785901767350
Nbr. of units in pkg.	4
Package weight(Lbs)	0.01
Returnability	N
Country of origin	LV

## Offer Sustainability

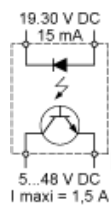
Sustainable offer status	Green Premium product
RoHS (date code: YYWW)	Compliant - since 0808 - Schneider Electric declaration of conformity  Schneider Electric declaration of conformity
REACH	Reference not containing SVHC above the threshold
Product environmental profile	Available
Product end of life instructions	Need no specific recycling operations

California proposition 65	WARNING: This product can expose you to chemicals including:
- - - - - Substance 1	Lead and lead compounds, which is known to the State of California to cause cancer and birth defects or other reproductive harm.
- - - - - More information	For more information go to <a href="http://www.p65warnings.ca.gov">www.p65warnings.ca.gov</a>

### Contractual warranty

Warranty period	18 months
-----------------	-----------

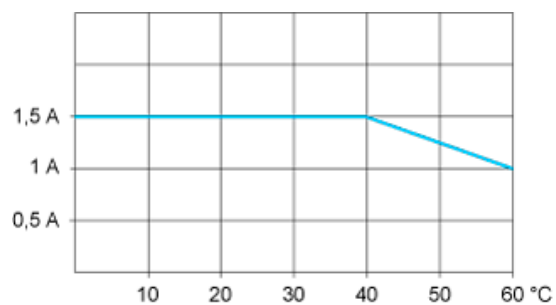
## Internal Wiring Diagram



---

Temperature Derating Curves

---



# Mouser Electronics

Authorized Distributor

Click to View Pricing, Inventory, Delivery & Lifecycle Information:

[Schneider Electric:](#)

[ABS7SC3E](#)