



Main

| | |
|---|--|
| Range of Product | Telemecanique Pressure sensors XM |
| Pressure sensor type | Electromechanical pressure sensor |
| Product Specific Application | ATEX D |
| Pressure sensor name | XMLB |
| Electrical circuit type | Control circuit |
| Pressure switch type of operation | Regulation between 2 thresholds |
| Scale type | Adjustable differential |
| Pressure Rating | 36.26 psi (2.5 bar) |
| Local display | With |
| Fluid connection type | G 1/4 (female) ISO 228 |
| Adjustable range of switching point on falling pressure | 2.03...33.21 psi (0.14...2.29 bar) |
| Adjustable range of switching point on rising pressure | 4.35...36.26 psi (0.3...2.5 bar) |
| Possible differential maximum at high setting | 25.38 psi (1.75 bar) |
| Maximum permissible accidental pressure | 130.53 psi (9 bar) |
| Destruction pressure | 261.07 psi (18 bar) |
| Pressure actuator | Diaphragm |
| Controlled fluid | Water 32...158 °F (0...70 °C)) Air 32...158 °F (0...70 °C)) Hydraulic oil 32...158 °F (0...70 °C)) |
| Materials in contact with fluid | Zinc alloy Nitrile |
| Enclosure Material | Zinc alloy |

Complementary

| | |
|--|---|
| Maximum permissible pressure - per cycle | 72.52 psi (5 bar) |
| Cable entry number | 1 tapped entry M20 x 1.5 cable gland (included) |
| Terminal block type | 4 terminals |
| Repeat accuracy | 2 % |
| Auxiliary contacts operation | Snap action |
| Contacts material | Silver contacts |
| Mechanical durability | 8000000 cycles |
| Setting | External |
| Terminals description ISO n°1 | (13-14-11-12)OF |
| Height | 6.22 in (158 mm) |
| Depth | 3.05 in (77.5 mm) |
| Width | 2.17 in (55 mm) |

Environment

| | |
|---------------------------------------|---|
| Standards | EN/IEC 60079-0 EN/IEC 60079-31 |
| Directives | 2014/34/EU - ATEX directive |
| Product Certifications | INERIS 04ATEX0058 IEC-Ex INE 17.0019 |
| Marking | II2 D-Ex tb IIIC T85°C Db IP66 |
| Protective treatment | TC |
| Ambient air temperature for operation | -4...140 °F (-20...60 °C) |
| Operating position | Any position |

Ordering and shipping details

| | |
|-----------------------|--------------------------------------|
| Category | 22661 - XMLA,B,C,D PRESSURE SWITCHES |
| Discount Schedule | DS2 |
| GTIN | 3389118027138 |
| Nbr. of units in pkg. | 1 |
| Package weight(Lbs) | 2.24 lb(US) (1.017 kg) |
| Returnability | No |
| Country of origin | FR |

Packing Units

| | |
|------------------------|-------------------|
| Unit Type of Package 1 | PCE |
| Package 1 Height | 2.80 in (7.1 cm) |
| Package 1 width | 4.02 in (10.2 cm) |
| Package 1 Length | 5.94 in (15.1 cm) |

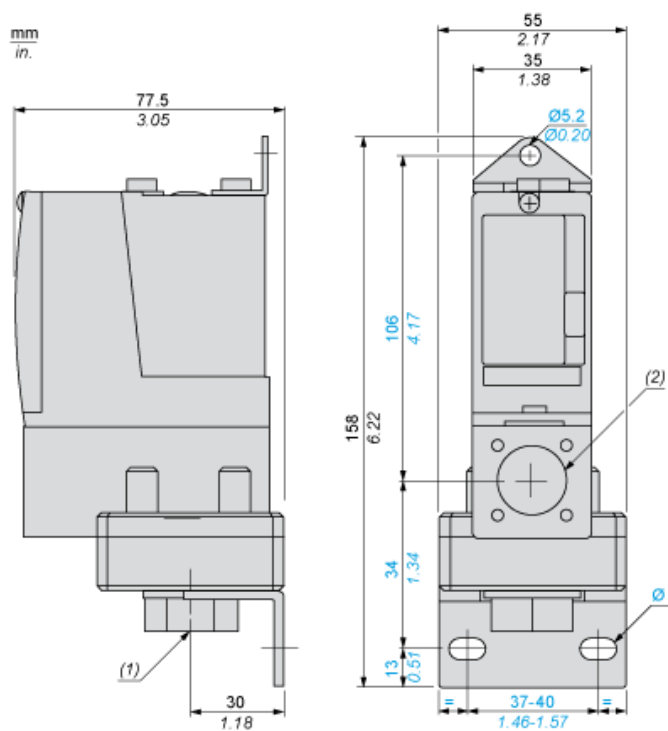
Offer Sustainability

| | |
|----------------------------|---|
| Sustainable offer status | Green Premium product |
| California proposition 65 | WARNING: This product can expose you to chemicals including: Diisononyl phthalate (DINP), which is known to the State of California to cause cancer, and Di-isodecyl phthalate (DIDP), which is known to the State of California to cause birth defects or other reproductive harm. For more information go to www.P65Warnings.ca.gov |
| REACH Regulation | REACH Declaration |
| EU RoHS Directive | Pro-active compliance (Product out of EU RoHS legal scope) EU RoHS Declaration |
| Mercury free | Yes |
| RoHS exemption information | Yes |
| Environmental Disclosure | Product Environmental Profile |

Contractual warranty

| | |
|----------|-----------|
| Warranty | 18 months |
|----------|-----------|

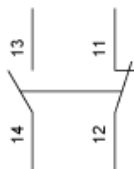
Dimensions



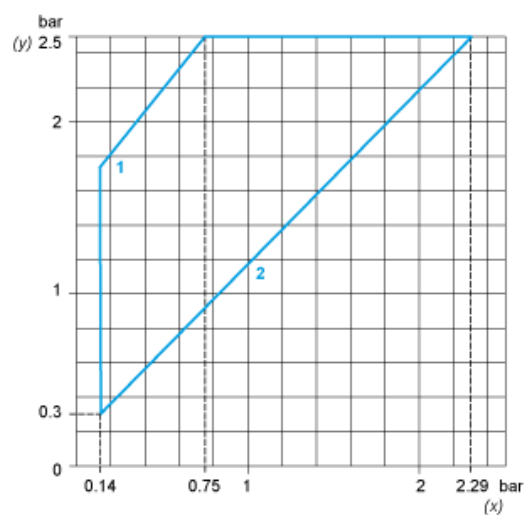
- (1) 1 fluid entry, tapped G1/4 (BSP female)
(2) 1 electrical connections entry, tapped M20 x 1.5
Ø : 2 elongated holes Ø 10.2 x 5.2

Wiring Diagram

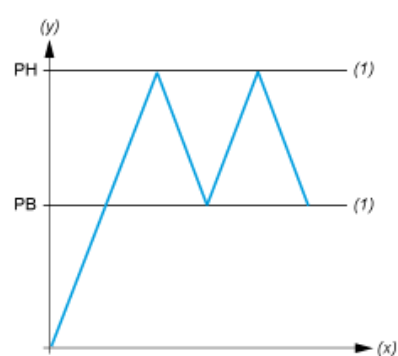
Terminal Model



Operating Curves



- (y) Rising pressure
(x) Falling pressure
1 : Maximum differential
2 : Minimum differential



- (y) Pressure
(x) Time
(1) Adjustable value
PH : High point
PB : Below point

Mouser Electronics

Authorized Distributor

Click to View Pricing, Inventory, Delivery & Lifecycle Information:

Schneider Electric:

[XMLB002A2S12EX](#)