

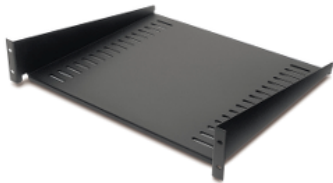
Product data sheet

Specifications



Fixed Shelf 50lbs/22.7kg Black

AR8105BLK



Overview

Presentation	Cantilever fixed shelf to enable the mounting of a monitor or other equipment into the rack environment.
Lead time	Usually in Stock

Main

Number of rack unit	2U
Number of cables	1

General

Provided equipment	Installation guide Mounting Hardware
--------------------	---

Physical

Color	Black
Depth	15.98 in (40.6 cm)
Height	3.50 in (8.9 cm)
Maximum Mounting Depth	16.00 in (40.64 cm)
Minimum mounting depth	16.00 in (40.64 cm)
Net Weight	5.00 lb(US) (2.27 kg)
Permanent permissible load	50 lb(US) (22.68 kg) static
Width	19.02 in (48.3 cm)

Conformance

Standards	EIA-310D
-----------	----------

Ordering and shipping details

GTIN	00731304107859
Package weight(Lbs)	9.41 lb(US) (4.27 kg)

Packing Units

Package 1 Height	4.02 in (10.2 cm)
Package 1 width	22.52 in (57.2 cm)

Package 1 Length	17.52 in (44.5 cm)
------------------	--------------------

Offer Sustainability

Sustainable offer status	Green Premium product
REACH Regulation	REACH Declaration
REACH free of SVHC	Yes
EU RoHS Directive	Pro-active compliance (Product out of EU RoHS legal scope) EU RoHS Declaration
Toxic heavy metal free	Yes
Mercury free	Yes
RoHS exemption information	Yes
Take-back	Take-back program available

Contractual warranty

Warranty	2 years repair or replace
----------	---------------------------

Mouser Electronics

Authorized Distributor

Click to View Pricing, Inventory, Delivery & Lifecycle Information:

[Schneider Electric:](#)

[AR8105BLK](#)