

Product availability: Non-Stock - Not normally stocked in distribution facility



### Main

Range of product	Modicon M171
Product or component type	Communication module
Communication port protocol	CAN2.B

### Complementary

Integrated connection type	CAN port wire crimp - twisted pair
Physical interface	Twisted pair
Supply	Via base board EVD/EVC
Product compatibility	Logic controller M171 performance Logic controller M172 performance
Product weight	0.17 lb(US) (0.077 kg)

### Environment

Product certifications	CE CSA CURus EAC
Marking	CE
IP degree of protection	IP20
Ambient air temperature for operation	14...131 °F (-10...55 °C)
Ambient air temperature for storage	-4...185 °F (-20...85 °C)
Relative humidity	10...90 % without condensation

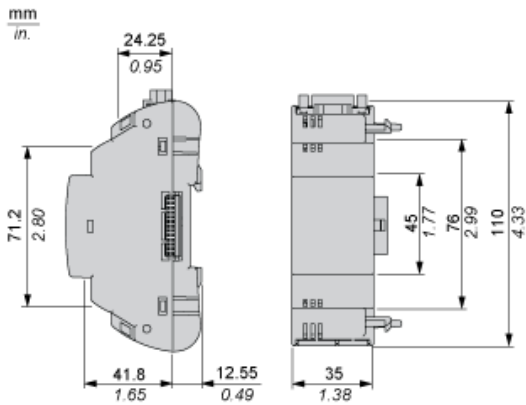
### Ordering and shipping details

Category	22537 - M171 / M172 HVAC CONTROLLERS
Discount Schedule	PC12
GTIN	003606480752421
Nbr. of units in pkg.	1
Package weight(Lbs)	0.6500000000000002
Returnability	N
Country of origin	IT

### Offer Sustainability

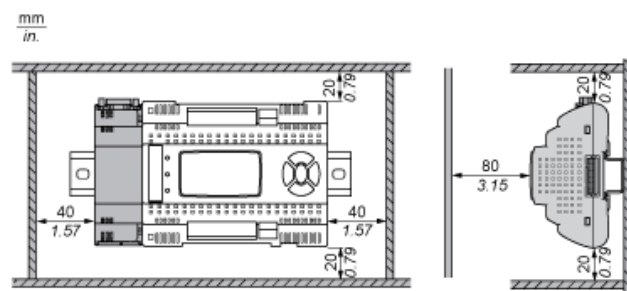
RoHS (date code: YYWW)	Compliant - since 1429 - Schneider Electric declaration of conformity <a href="#">Schneider Electric declaration of conformity</a>
REACH	Reference not containing SVHC above the threshold
California proposition 65	WARNING: This product can expose you to chemicals including:
----- Substance 1	Lead and lead compounds which is known to the State of California to cause cancer and birth defects or other reproductive harm.
----- More information	For more information go to <a href="http://www.p65warnings.ca.gov">www.p65warnings.ca.gov</a>

Dimensions

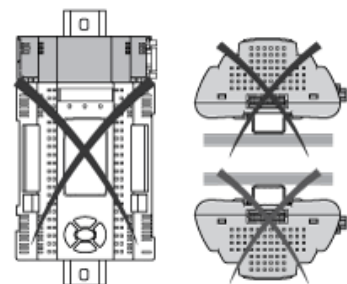


## Mounting and Clearance

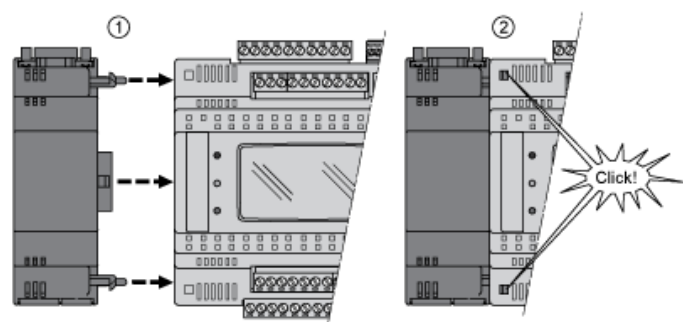
### Clearance



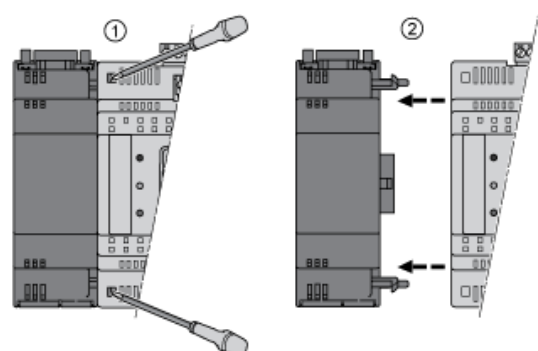
### Misplacement



### Mounting on Controller



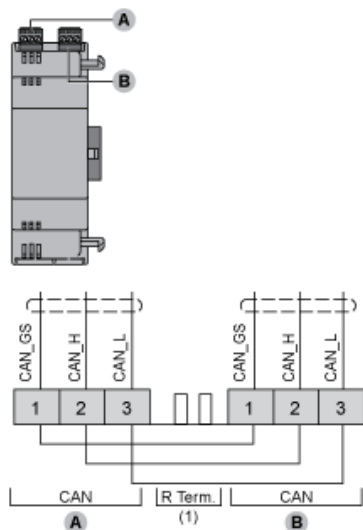
### Dismounting



## Connections and Schema

### CAN Communication Module

TM171ACAN



(1) CAN terminal resistance.

# Mouser Electronics

Authorized Distributor

Click to View Pricing, Inventory, Delivery & Lifecycle Information:

[Schneider Electric:](#)

[TM171ACAN](#)