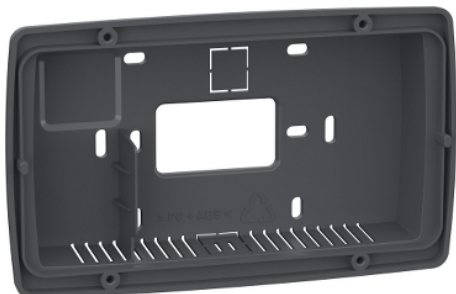


Product availability: Non-Stock - Not normally stocked in distribution facility



Main

Range of product	Modicon M171/M172
Accessory / separate part category	Mounting accessory
Accessory / separate part type	Mounting support

Complementary

Product or component type	Mounting support
Product compatibility	Logic controller M171 performance (flush mounting)
Color	Grey
Accessory / separate part destination	Remote display
Product specific application	Wall mounting support
Fixing mode	By screws
Width	6.3 in (160 mm)
Depth	1.18 in (30 mm)
Height	3.78 in (96 mm)
Product weight	0.03 lb(US) (0.015 kg)

Ordering and shipping details

Category	22537 - M171 / M172 HVAC CONTROLLERS
Discount Schedule	PC12
GTIN	003606480752414
Nbr. of units in pkg.	1
Package weight(Lbs)	0.14999999999999999
Returnability	N
Country of origin	IT

Offer Sustainability

RoHS (date code: YYWW)	Compliant - since 1429 - Schneider Electric declaration of conformity Schneider Electric declaration of conformity
REACH	Reference not containing SVHC above the threshold
California proposition 65	WARNING: This product can expose you to chemicals including:
- - - - - Substance 1	Lead and lead compounds which is known to the State of California to cause cancer and birth defects or other reproductive harm.
- - - - - More information	For more information go to www.p65warnings.ca.gov

Mouser Electronics

Authorized Distributor

Click to View Pricing, Inventory, Delivery & Lifecycle Information:

[Schneider Electric:](#)

[TM171ABKPG](#)