

HMIDT752

Flat screen, Harmony GTU, 15 W Touch Smart Display FWXGA



Product availability: Stock - Normally stocked in distribution facility

Price*: 3700.00 USD



Main

| | |
|----------------------------|---------------------------------------|
| Range of product | Harmony GTU |
| Product or Component Type | Flat screen |
| Terminal type | Touchscreen display |
| Integrated connection type | USB 2.0 type A USB 2.0 type mini B |

Complementary

| | |
|---------------------------|---|
| Pixel resolution | 1366 x 768 |
| Touchscreen resolution | 2048 x 2048 |
| Function Available | Brightness sensor |
| [Us] rated supply voltage | 12...24 V DC power supply |
| Supply voltage limits | 10.8...28.8 V |
| Power Consumption in W | 17 W |
| Display size | 15.6 inch |
| Display type | Colour TFT LCD |
| Display Resolution | 1366 x 768 pixels FWXGA |
| Display colour | 16 million colours |
| Backlight lifespan | 50000 hours |
| Touch panel | Multi-touch projected capacitive technology (PCT) 50000000 cycles |
| Type of Installation | Indoor installation |
| Type of cooling | Natural convection |
| Inrush current | 30 A |
| Cut-out dimensions | 396 (+ 1/- 0) x 277 (+ 1/- 0) mm |
| Width | 16.30 in (414 mm) |
| Height | 11.61 in (295 mm) |
| Depth | 2.72 in (69 mm) |
| Product Weight | 11.02 Lb(US) (5 kg) |

Environment

| | |
|---------------------------------------|---|
| IP degree of protection | Front panel IP66 Front panel IP67 |
| NEMA degree of protection | NEMA 4X front panel |
| Standards | UL 508 ANSI/ISA 12-12-01 Class I division 2 CSA C22.2 No 213 CSA C22.2 No 142 IEC 61132-2 |
| Product Certifications | KC CE RCM cULus |
| Ambient air temperature for operation | 32...131 °F (0...55 °C) EN 61131-2 |
| Ambient air temperature for storage | -4...140 °F (-20...60 °C) |
| Pollution degree | 2 |
| Relative Humidity | 10...90 % non-condensing |
| Operating altitude | 6561.68 ft (2000 m) |
| Vibration resistance | 3.5 mm constant amplitude 5...9 Hz) EN/IEC 61131-2 9.8 m/s² 9...150 Hz) EN/IEC 61131-2 |
| Shock resistance | 147 m/s² EN/IEC 61131-2 |
| Electromagnetic compatibility | Electrostatic discharge immunity testlevel 3 EN/IEC 61000-4-2 |





Ordering and shipping details

| | |
|-----------------------|-------------------------|
| Category | 22567 - MAGELIS HMI GTU |
| Discount Schedule | MC2 |
| GTIN | 3606481203465 |
| Nbr. of units in pkg. | 1 |
| Package weight(Lbs) | 15 Lb(US) (6.80 kg) |
| Returnability | Yes |

Packing Units

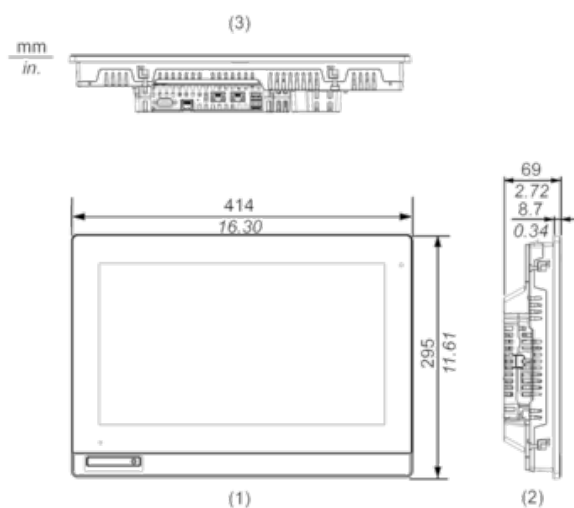
| | |
|------------------|----------------------|
| Package 1 Height | 16.69 In (42.400 cm) |
| Package 1 width | 6.89 In (17.500 cm) |
| Package 1 Length | 20.75 In (52.700 cm) |

Offer Sustainability

| | |
|----------------------------|---|
| Sustainable offer status | Green Premium product |
| California proposition 65 | WARNING: This product can expose you to chemicals including: Lead and lead compounds, which is known to the State of California to cause cancer and birth defects or other reproductive harm. For more information go to www.P65Warnings.ca.gov |
| REACH Regulation |  REACH Declaration |
| REACH free of SVHC | Yes |
| EU RoHS Directive | Pro-active compliance (Product out of EU RoHS legal scope)  EU RoHS Declaration |
| Mercury free | Yes |
| RoHS exemption information |  Yes |
| China RoHS Regulation |  China RoHS Declaration |
| WEEE | The product must be disposed on European Union markets following specific waste collection and never end up in rubbish bins. |

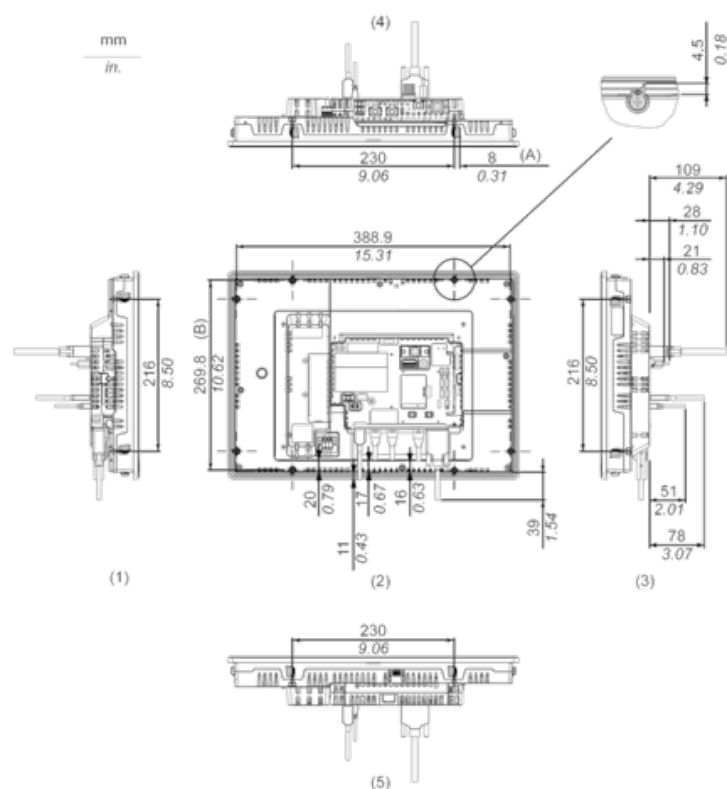
External Dimensions

Display Unit with Box Module



- (1) Front
- (2) Left
- (3) Bottom

Installation with Installation Fasteners and Dimensions with Cables

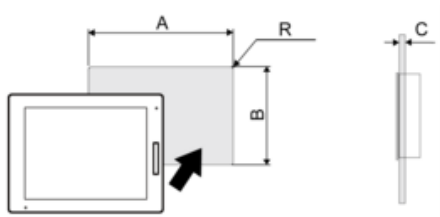


- (A) Rotation area of the fastener

(B) Pitch of the center of installation fastner screws

- (1) Right
- (2) Front
- (3) Left
- (4) Bottom
- (5) Top

Panel Cut Dimensions



Dimensions in mm

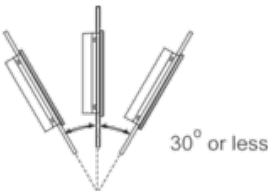
| A | B | C | R |
|-------------|-------------|---------|--------|
| 396 (+1/-0) | 277 (+1/-0) | 1.6...5 | 3 max. |

Dimensions in in.

| A | B | C | R |
|------------------|------------------|------------|-----------|
| 15.59 (+0.04/-0) | 10.91 (+0.04/-0) | 0.06...0.2 | 0.12 max. |

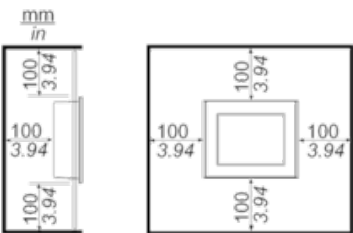
Installation Requirements

Mounting Angle



When installing this product in a slanted position with an incline more than 30°, the ambient temperature must not exceed 40 °C (104 °F). You may need to use forced air cooling (fan, A/C) to ensure the ambient operating temperature is 40 °C or less (104 °F or less).

Clearance



| | |
|-----------------------|----------------|
| Product Life Status : | Commercialised |
|-----------------------|----------------|

Mouser Electronics

Authorized Distributor

Click to View Pricing, Inventory, Delivery & Lifecycle Information:

[Schneider Electric:](#)

[HMIDT752](#)