

Product End of Life Instructions

APM LH/Regen Power Module 200kW - 500...690V

**ATV600/900 Altivar Process Modular LH/Regen
110kW...1200kW (125HP...1200HP), 380V...690V**



Schneider
Electric



Potential disassembly risks



DANGER



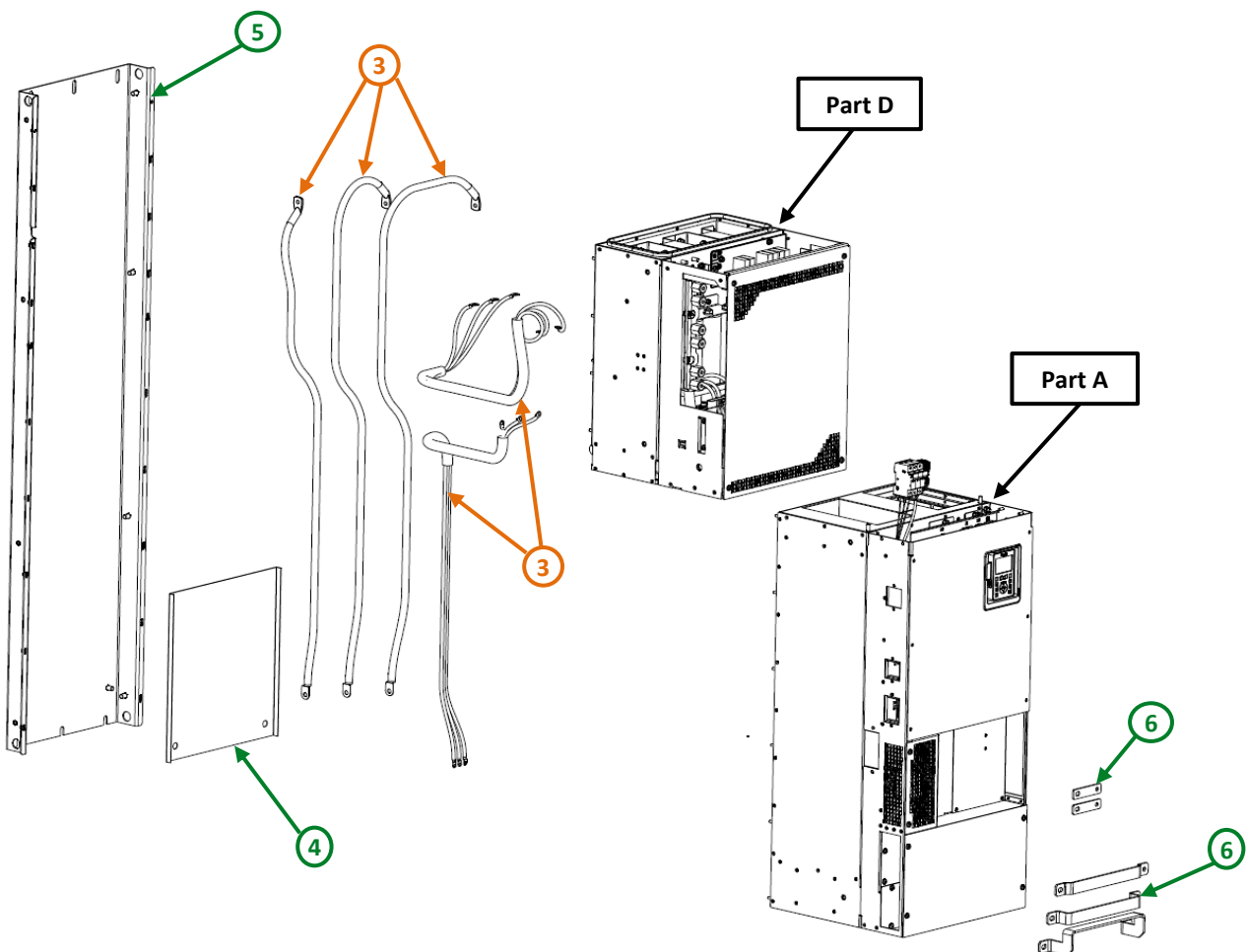
HAZARD OF ELECTRIC SHOCK, EXPLOSION OR ARC FLASH

- Before servicing, remove all power and wait 15 minutes.
- Verify that no voltage is present.
- Ground and short circuit the phases.
- Mount all protective covers after servicing.
- Read the instructions.

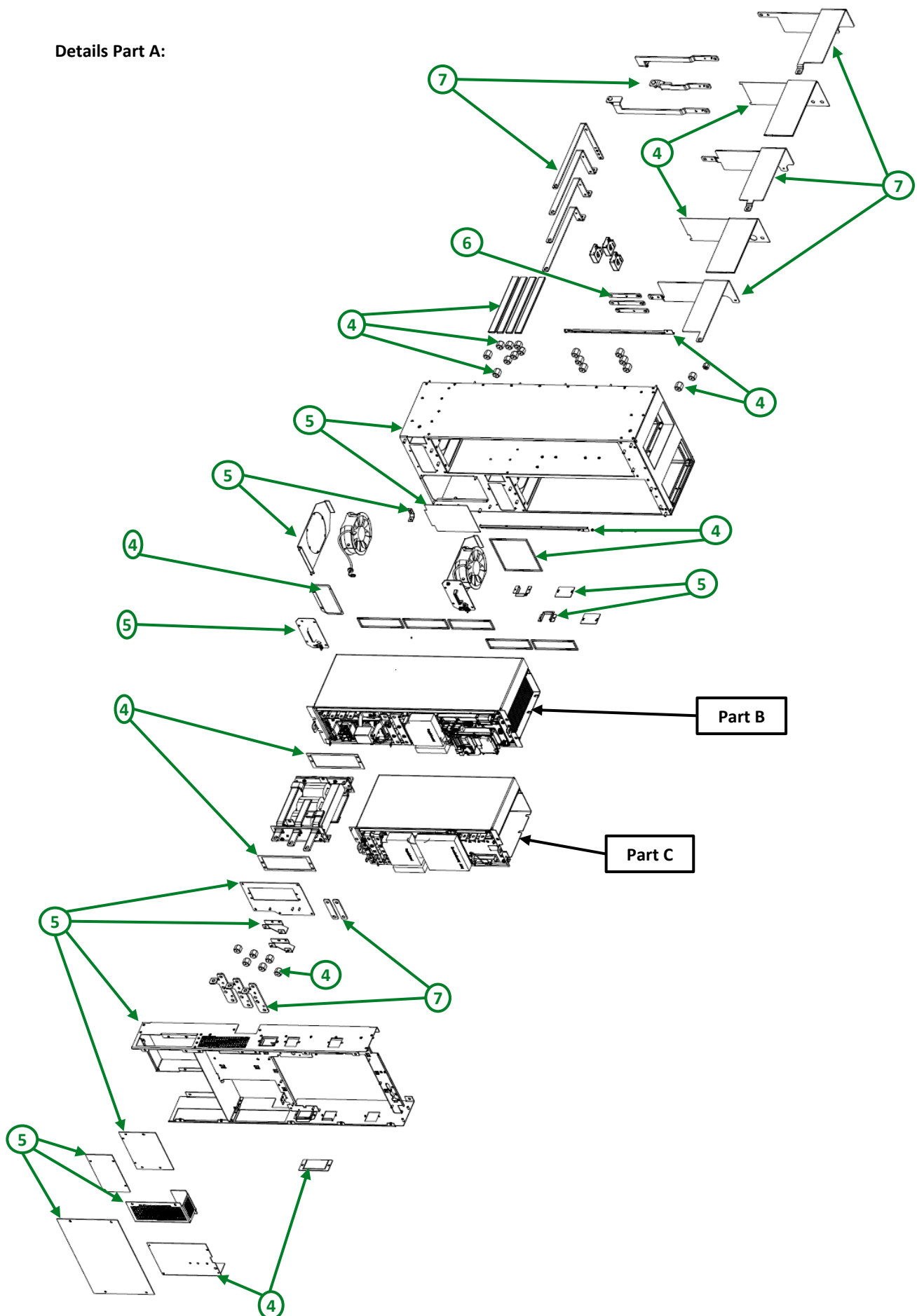
Failure to follow these instructions will result in death or serious injury.



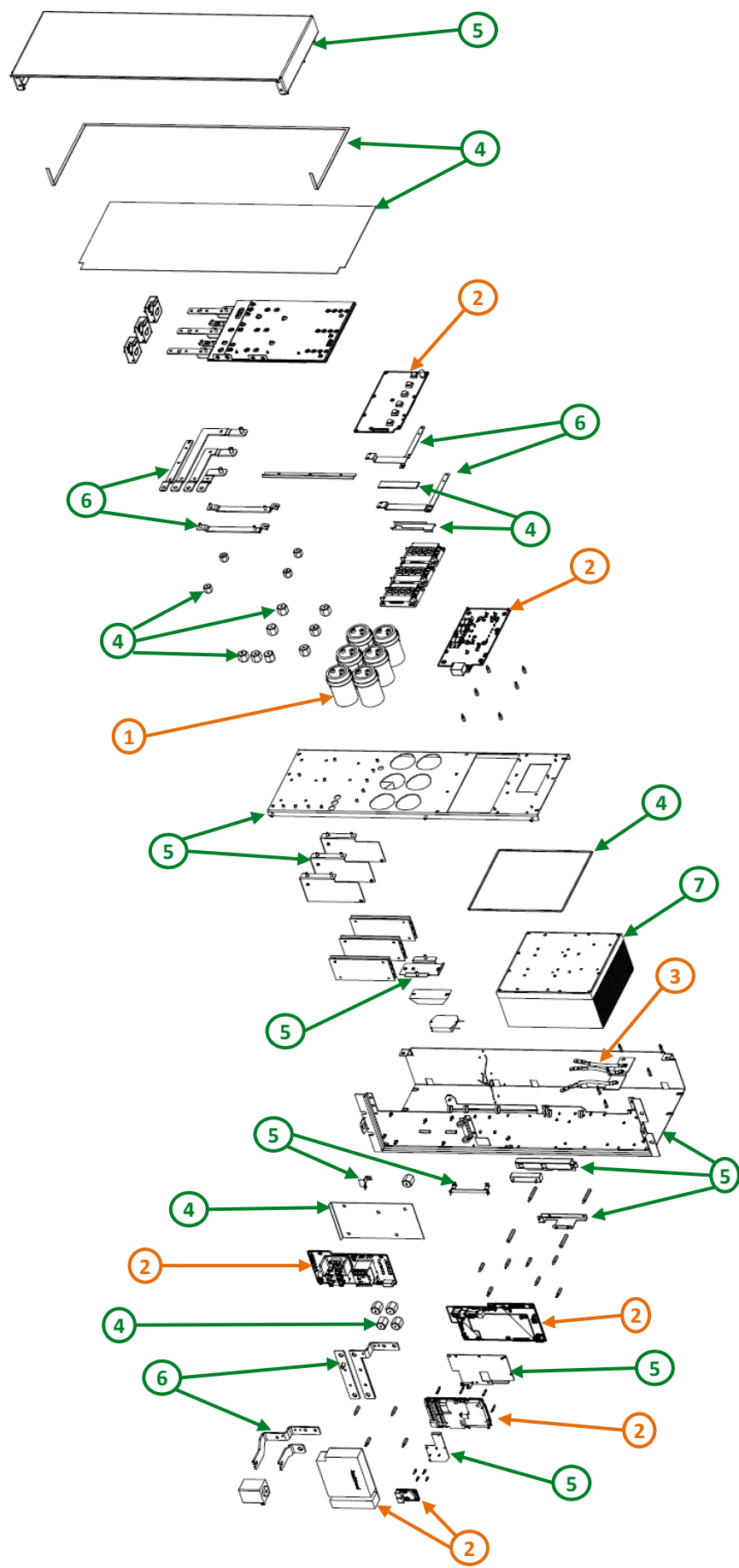
End of Life Instructions



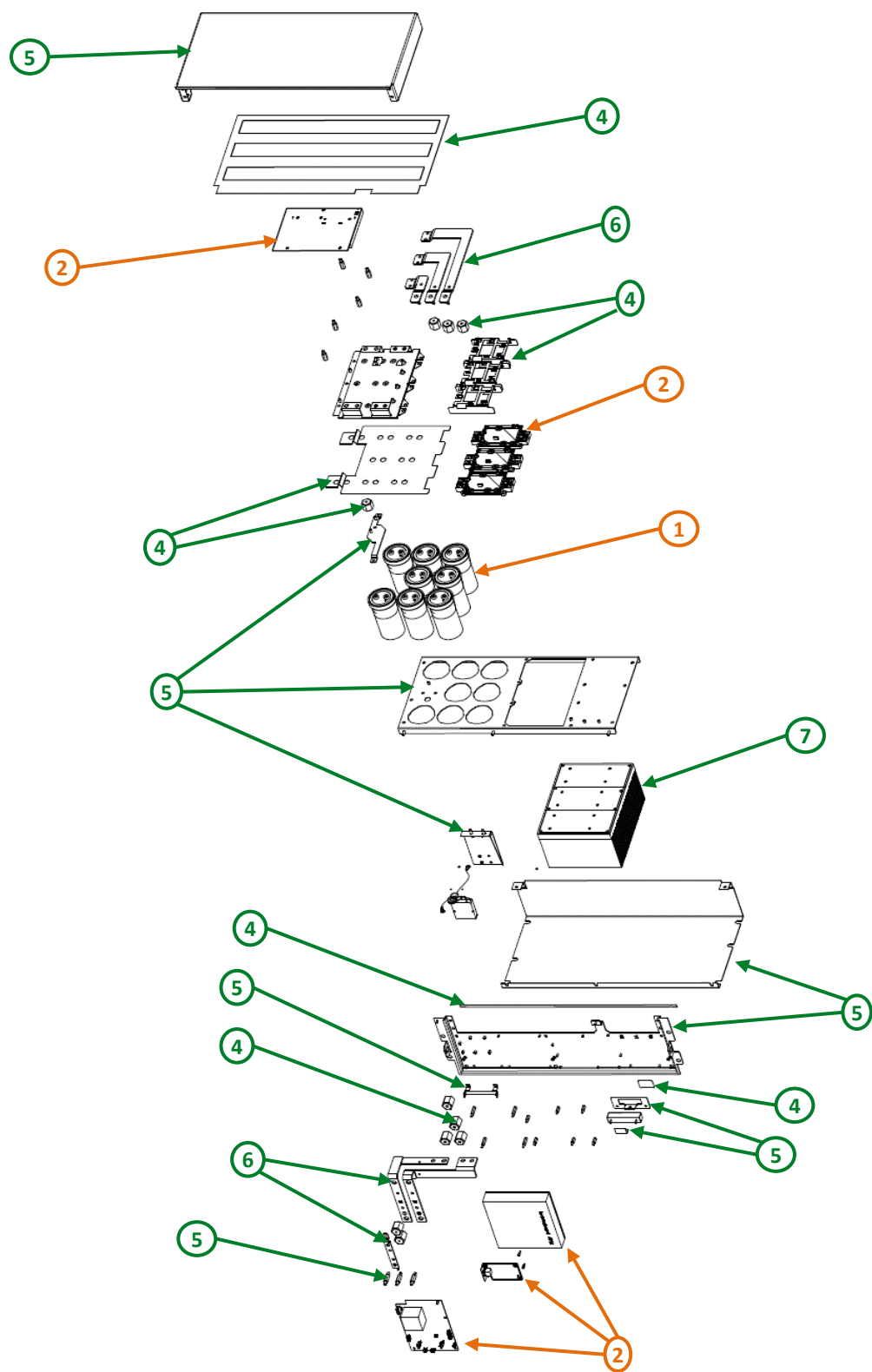
Details Part A:



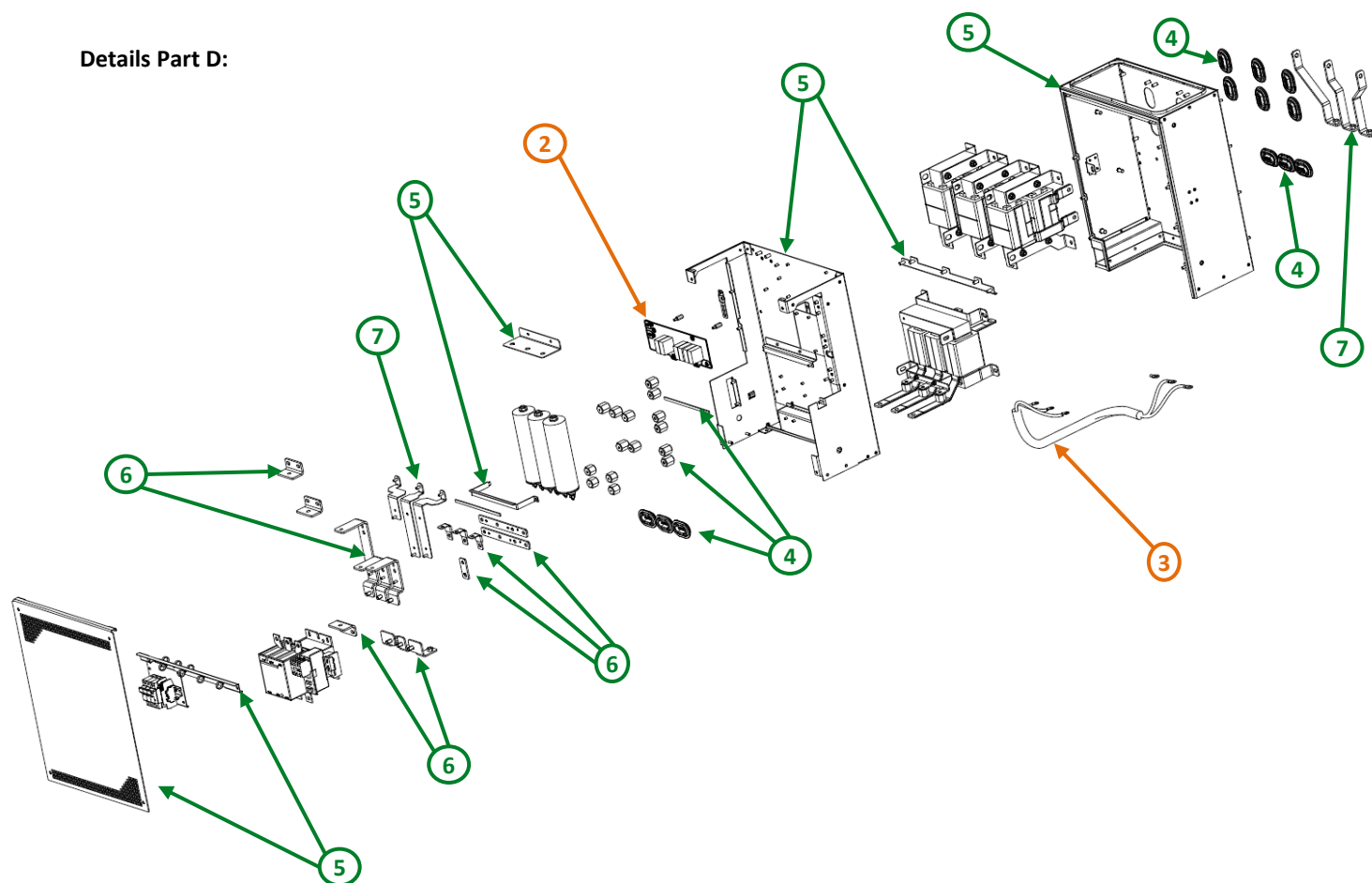
Details Part B:



Details Part C:



Details Part D:



Recommendation	Number on drawing	Component / Material	Weight (in g)	Comment
To be depolluted	1	Electrolyte capacitors which size: height > 25 mm, diameter > 25 mm or proportionately similar volume	7864	
To be depolluted	2	Electronic Board (Power) > 10cm ²	4328	
To be depolluted	3	Cable (high current)	6190	
To be dismantled	4	Plastic	771	Insulation, Cover
To be dismantled	5	Steel	113770	Housing
To be dismantled	6	Copper	8703	Bars
To be dismantled	7	Aluminium	28269	Heatsink, Bars
Other			126177	Chokes, Power Resistor



Product description

Manufacturer identification	Schneider Electric Industries SAS
Brand name	Schneider Electric
Product function	The main function of the Altivar Process product range is the speed control and variation of a synchronous, asynchronous or reluctance electric motor for fluid management and industrial applications. The APM Regen is a Drive Module to be integrated into a Drive System by a Certified Partner.
Product reference	APM1B0C20Y6
Additional similar product references	APM1B0C20Y6 APM1B0C16N4
Total representative product mass	290000 g
Representative product dimensions	1722mm x 508mm x 450mm
Accessories	No accessories needed.
Date of information release	12/2018



Additional information

Legal information	The product family must be disposed according to the legislation of the country. This document is intended for use by end of life recyclers or treatment facilities. It provides the basic information to assure an appropriate end of life treatment for the components and materials of the product.	
In case of special transportation: transportation method	No special transportation.	
Recyclability potential	80%	Based on "ECO'DEEE recyclability and recoverability calculation method" (version V1, 20 Sep. 2008 presented to the French Agency for Environment and Energy Management: ADEME).

Schneider Electric Industries SAS

Country Customer Care Center
<https://www.schneider-electric.com/contact>

35, rue Joseph Monier
CS 30323
F- 92506 Rueil Malmaison Cedex
RCS Nanterre 954 503 439
Capital social 896 313 776 €

www.schneider-electric.com

ENVEOL1810008EN_V1

Published by Schneider Electric

© 2018 - Schneider Electric – All rights reserved

12/2018

Mouser Electronics

Authorized Distributor

Click to View Pricing, Inventory, Delivery & Lifecycle Information:

[Schneider Electric:](#)

[APM1B0C16N4](#) [APM1B0C20Y6](#)