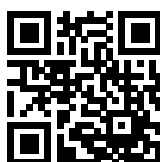


Compact 690 VAC power line EMC/RFI filter

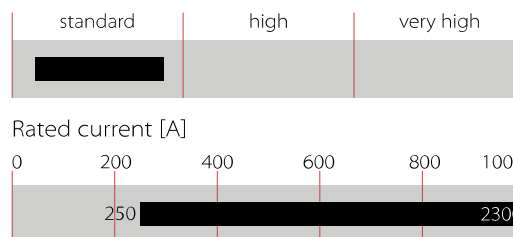


- High current 3-phase filter up to 2300 A
- Extremely compact and light weight design
- Minimum installation foot print
- Performance optimised for standard purpose applications
- FN3310 series without Cy capacitors to ground
- FN3311 IT versions for use in IT power networks



Performance indicators

Attenuation performance



Technical Specifications

Maximum continuous operating voltage	3x760 VAC for FN 3310 HV and FN 3311 HVIT 3x760/440 VAC for FN 3311 HV
Nominal operating voltage	690 VAC
Rated currents	250 to 2300 A @ 50°C
Overload capability	4x rated current at switch on, max. 8 sec 1.5x rated current for 1 minute, once per hour
Operating frequency	DC to 60 Hz
High potential test voltage	P -> E 3.0 kVAC for 2 s (FN 3310 HV/FN 3311 HVIT 3.35 kVAC for 2 s) P -> P 3.45 kVDC for 2 s
Temperature range (operation and storage)	-40°C to +100°C
Climatic category	40/100/21 acc. to IEC 60068-1
Protection category	IP 00
Flammability corresponding to	UL 94V-0
Design corresponding to	UL 1283, CSA 22.2 No. 8, IEC/EN 60939, EN 60721-3
MTBF (Mil-HB-217F)	>200,000 h @ 50°C/1000 V
Terminals/Housing	Ni plated cu bars/Metal

Approvals & Compliances



The FN 3311/FN 3310 product series of standard EMC/RFI filters are based on Schaffner's many years of expertise in filter design for all types of converter and inverter applications. Installed between the PV inverter and the power grid, the FN 3311/FN 3310 AC filters are used to influence positively the conducted emissions on the grid side to help to comply with the required emission standards.

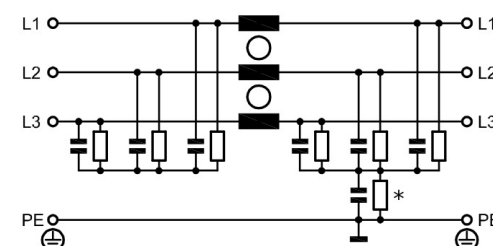
Features and Benefits

The FN 3311/FN 3310 series are the most compact dedicated high current AC filters, not only suitable for PV applications, but being an optimum fit with most modern PV inverter topologies. In addition the filters can be configured in a very flexible way to fulfil custom specific application requirements. All FN 3311/FN 3310 come in unsymmetrical housings, which help to prevent inverse installation and wrong electrical connection. Along with solar panel-side installed Schaffner DC EMC/RFI filters FN 2211/FN 2210, the AC filters FN 3311/FN 3310 are key to meet the stringent international standards for electro-magnetic compatibility and help to ensure a reliable and fault-free operation of the entire PV system.

Typical Applications

The FN 3311/FN 3310 series are primarily designed for all kind of power line connected converter and inverter applications between 250 and 2'300 A. However, they are optimised for PV inverter and can potentially also be applied for general purpose motor drives applications.

Typical electrical schematic



Filter Selection Table

Filters */**		Rated current @ 50°C	Typical inverter AC power rating***	Leakage current**** @ 760 VAC/50 Hz	Power losss @ 25°C/DC	Weight
		[A]	[kVA]	[mA]	[W]	[kg]
FN3311HV with Cy caps		FN3311HVIT with Cy caps				
FN3311HV-250-99-C18-R55	FN3311HVIT-250-99-C18-R5	250	240	0.09	18	2.7
FN3311HV-400-99-C18-R55	FN3311HVIT-400-99-C18-R5	400	380	0.09	30	3.3
FN3311HV-600-99-C18-R55	FN3311HVIT-600-99-C18-R5	600	570	0.09	33	4.5
FN3311HV-1000-99-C18-R55	FN3311HVIT-1000-99-C18-R5	1000	950	0.09	70	6.1
FN3311HV-1500-99-C18-R55	FN3311HVIT-1500-99-C18-R5	1500	1430	0.09	133	11.0
FN3311HV-2300-99-C18-R55	FN3311HVIT-2300-99-C18-R5	2300	2200	0.09	201	18.0
FN3310 without Cy caps						
FN3310HV-250-99-R5		250	240		18	2.7
FN3310HV-400-99-R5		400	380		30	3.3
FN3310HV-600-99-R5		600	570		33	4.5
FN3310HV-1000-99-R5		1000	950		70	6.1
FN3310HV-1500-99-R5		1500	1430		133	11.0
FN3310HV-2300-99-R5		2300	2200		201	18.0

* Filters with higher current ratings available upon request.

** Filters with reduced Cy capacitance to ground for high asymmetrical currents and higher voltages available upon request.

*** Calculated at rated current, 690 VAC and cos phi = 0.8. The exact value depends upon the efficiency of the drive, the motor and the entire application.£

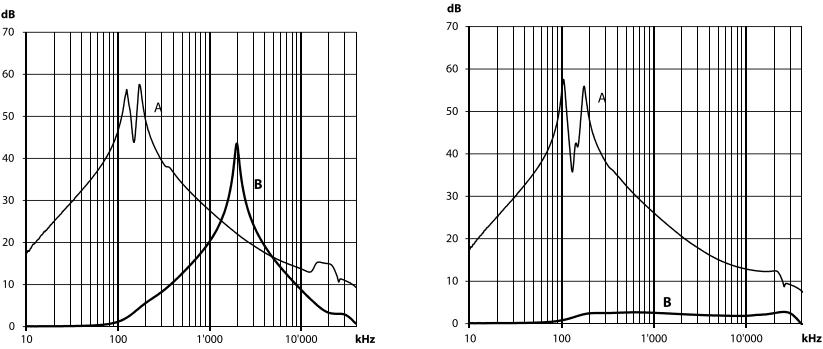
**** Leakage current according IEC 60939-1

Typical Filter Attenuation Curves

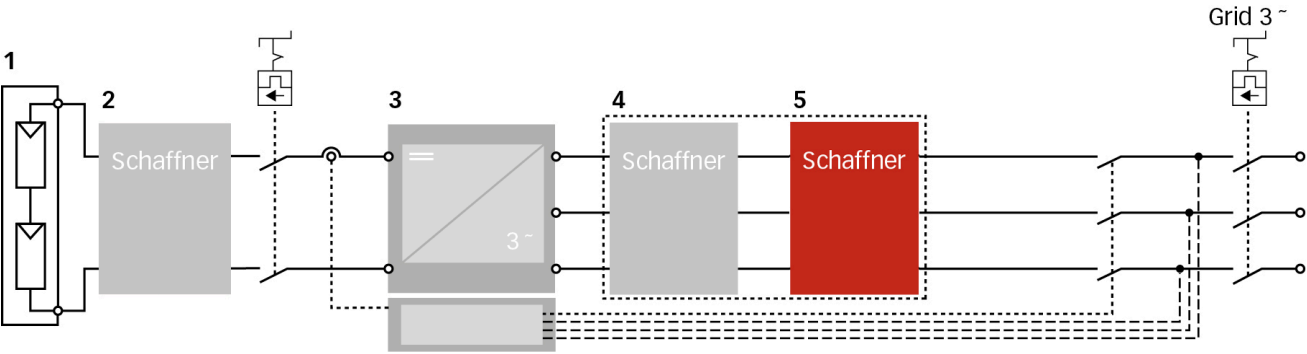
Per CISPR 17; A=50 Ω/50 Ω sym; B=50 Ω/50 Ω asym

FN3311HV-250...2300-99-C18-R5 and FN3311HVIT-250...2300-99-C18-R55

FN3310HV-250...2300-99-R5



Typical Block Schematic



- 1 PV modules

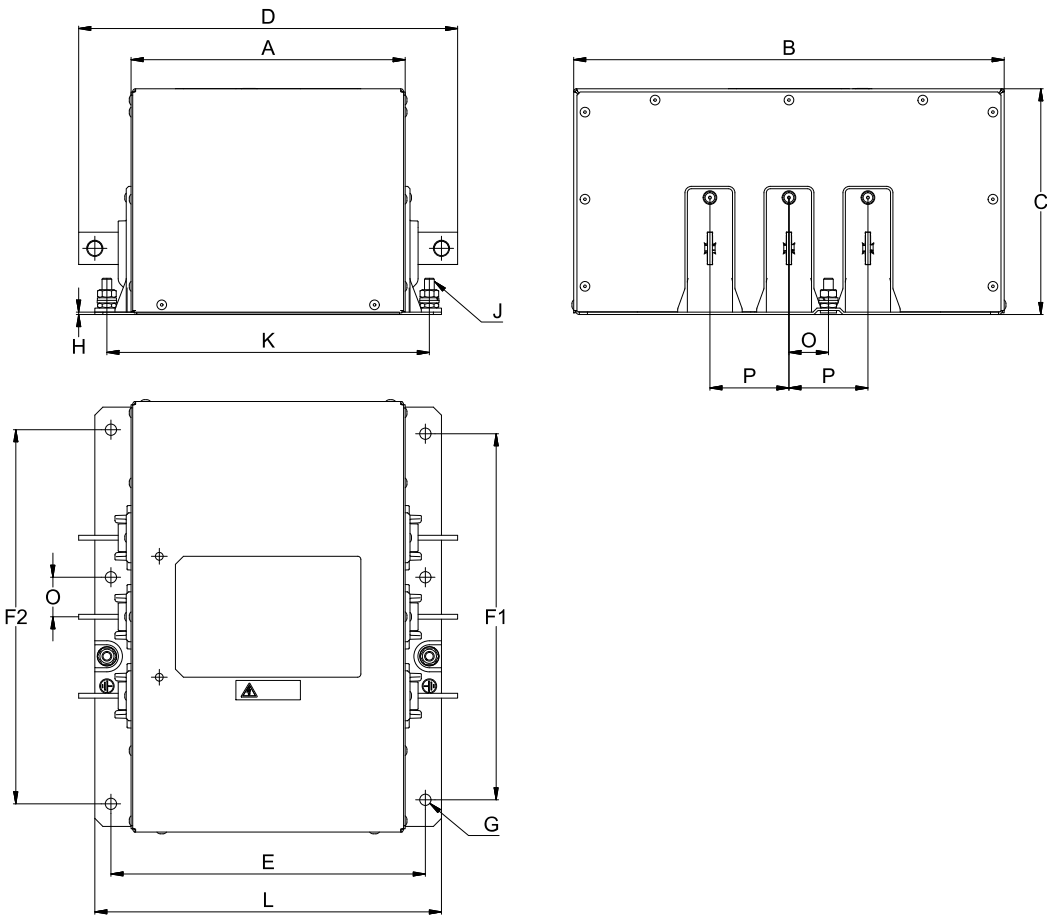
2 Schaffner DC filter FN 22xx
- 3 Central Inverter

4 Schaffner magnetic components
- 5 Schaffner AC EMC/EMI filter FN 3xxx

Important note: depending on the grounding scheme of the solar power system, including the solar panel and the grid side transformer, the appropriate DC- and AC EMC/EMI filter version need to be selected. For support, please contact your local Schaffner sales office or partner.

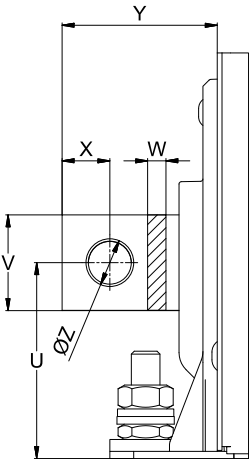
Mechanical Data

250 to 2'300 A types

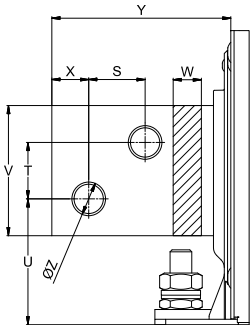


Busbar Connections

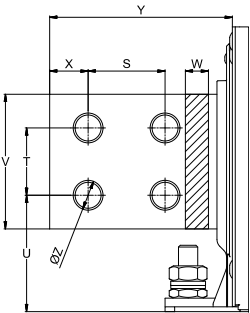
250 to 1'000 A types



1'500 A types



2'300 A types



Note: all FN3311 and FN3310 provide unsymmetrical mounting hole patterns to prevent inverse filter installation in the field.

Dimensions Of FN3311HV And FN3310HV Series

(the FN3311HVIT versions have the same dimensions as the FN3311HV)

	250 A	400 A	600 A	1'000 A	1'500 A	2'300 A
A	170	175	190	190	195	220
B	267	280	290	290	310	320
C	140	140	140	140	150	165
D	235	250	265	305	360	410
E	195	205	220	220	240	265
F1	227	240	250	250	270	275
F2	232	245	255	255	275	280
G	Ø7 (6x)	Ø9 (6x)	Ø9 (6x)	Ø9 (6x)	Ø11 (6x)	Ø11 (6x)
H	1.5	2	2.5	2.5	2.5	2.5
J	M6 (2x)	M8 (2x)	M8 (2x)	M8 (2x)	M10 (2x)	M10 (2x)
K	200 (+/- 1)	210 (+/- 1)	225 (+/- 1)	225 (+/- 1)	241 (+/- 1)	266 (+/- 1)
L	215	230	245	245	265	290
O	24.5	27	29.5	29.5	34.8	40
P	49 (+/- 0.5)	54 (+/- 0.5)	59 (+/- 0.5)	59 (+/- 0.5)	69.5 (+/- 0.5)	80 (+/- 0.5)
S					26	40
T					26	35
U	41	46	50	53	58	60.5
V	20	25	25	40	60	70
W	3	4	8	8	10	15
X	10	12.5	12.5	20	17	20
Y	32.5	37.5	37.5	57.5	82.5	95
Z	Ø9	Ø11	Ø11	Ø13.5	Ø13.5	Ø13.5

All dimensions in mm; 1 inch = 25.4 mm
Tolerances according: ISO 2768-m/EN 22768-m, if not stated otherwise

Please see the brochure "Basics in EMC and Power Quality" on our website www.schaffner.com to find more details on filter connectors.

Headquarters, Global
Innovation and
Development

Switzerland
Schaffner Group
Industrie Nord
Nordstrasse 5
4542
Luterbach
+41 32 681 66 26
info@schaffner.com

To find your local partner within
Schaffner's global network [schaffner.com](https://www.schaffner.com)

© 2025 Schaffner Group

The content of this document has been carefully checked and understood. However, neither Schaffner nor its subsidiaries assume any liability whatsoever for any errors or inaccuracies of this document and the consequences thereof. Published specifications are subject to change without notice. Product suitability for any area of application must ultimately be determined by the customer. In all cases, products must never be operated outside their published specifications. Schaffner does not guarantee the availability of all published products. This disclaimer shall be governed by substantive Swiss law and resulting disputes shall be settled by the courts at the place of business of Schaffner Holding AG. Latest publications and a complete disclaimer can be downloaded from the Schaffner website. All trademarks recognized.

Sales and Application
Centers

Finland
Schaffner Oy
Lohjanharjuntie 1109
08500
Lohja
+ 358 50 468 72 84
finlandsales@schaffner.com

France
Schaffner EMC S.A.S.
16-20 Rue Louis Rameau
95875
Bezons
+33 1 34 34 30 60
francesales@schaffner.com

Germany
Schaffner Deutschland GmbH
Ohiostr. 8
76149
Karlsruhe
+49 721 56910
germanysales@schaffner.com

Italy
Schaffner EMC S.r.l.
Via Ticino, 30
20900
Monza (MB)
+39 335 120 44 32
italysales@schaffner.com

Japan
Schaffner EMC K.K.
ISM Sangenjaya 7F
1-32-12 Kamiuma Setagaya-ku
154-0011
Tokyo
+81 3 5712 3650
japansales@schaffner.com

Singapore
Schaffner EMC Pte Ltd.
Blk 3015A Ubi Road 1 #05-09 Kampong Ubi
Industrial Estate
408705
Singapore
+65 63773283
singaporesales@schaffner.com

Sweden
Schaffner EMC AB
Östermalmströg 1
114 42
Stockholm
+46 8 5050 2425
swedensales@schaffner.com

Switzerland
Schaffner EMV AG
Industrie Nord
Nordstrasse 5
4542
Luterbach
+41 32 681 66 26
switzerlandsales@schaffner.com

India
Schaffner India Pvt. Ltd
Regus World Trade Centre
WTC 22nd Floor Unit No 2238 Brigade
Gateway Campus 26/1 Dr. Rajkumar Road
Malleshwaram (W)
560055
Bangalore
+91 8067935355
indiasales@schaffner.com

United Kingdom
Schaffner Ltd.
Suite 1 Oakmede Place
Terrace Road
RG42 4JF
Binfield
+44 118 9770070
schaffner.uksales@te.com

United States
Schaffner EMC Inc.
52 Mayfield Avenue
Edison, New Jersey
+1 732 225 9533
usasales@schaffner.com

Mouser Electronics

Authorized Distributor

Click to View Pricing, Inventory, Delivery & Lifecycle Information:

[Schaffner:](#)

[FN3310HV-1000-99-R5](#) [FN3310HV-600-99-R5](#) [FN3311HV-400-99-C18-R55](#) [FN3311HVIT-1500-99-C18-R5](#)
[FN3311HVIT-400-99-C18-R5](#) [FN3310HV-400-99-R5](#) [FN3311HVIT-600-99-C18-R5](#) [FN3311HV-1000-99-C18-R55](#)
[FN3310HV-250-99-R5](#) [FN3311HVIT-250-99-C18-R5](#) [FN3311HVIT-1500-99-C21-R5](#) [FN3311HV-1500-99-C18-R55](#)
[FN3311HVIT-2300-99-C18-R5](#) [FN3311HV-250-99-C18-R55](#) [FN3311HV-600-99-C18-R55](#) [FN3311HVIT-1000-99-C18-](#)
[R5](#) [FN3311HV-2300-99-C18-R55](#) [FN3310HV-1500-99-R5](#) [FN3310HV-2300-99-R5](#)