



P/N 16-304633-18 20-Pin PLCC-to-16-Pin DIP Adapter for Motorola MC12009 and Others

FEATURES

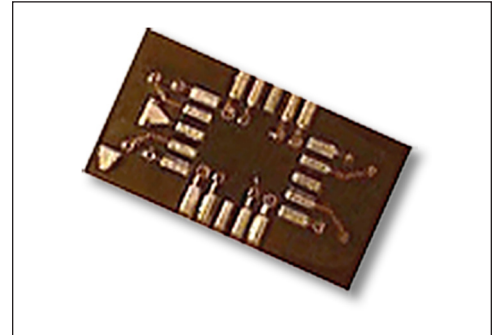
- A cost-effective means of upgrading to PLCC package without changing your PCB layout.

GENERAL SPECIFICATIONS

- BOARD MATERIAL: 0.062 thick FR-4 with 1-oz. Cu traces, both sides
- PINS: Brass 360 1/2-hard per UNS C36000, ASTM B16/B16M
- PIN PLATING: 200μ [5.08μ] Sn/Pb 93/7 ASTM B579-73 over 100μ [2.54μ] Ni per SAE AMS-QQ-N-290
- OPERATING TEMPERATURE: 221°F [105°C]

MOUNTING CONSIDERATIONS

- SUGGESTED PCB HOLE SIZE: 0.28 ±0.003 dia.



CUSTOMIZATION: In addition to the standard products shown on this page, Aries specializes in custom design and production. Special materials, platings, sizes, and configurations can be furnished, depending on the quantity. **NOTE:** Aries reserves the right to change product general specifications without notice.

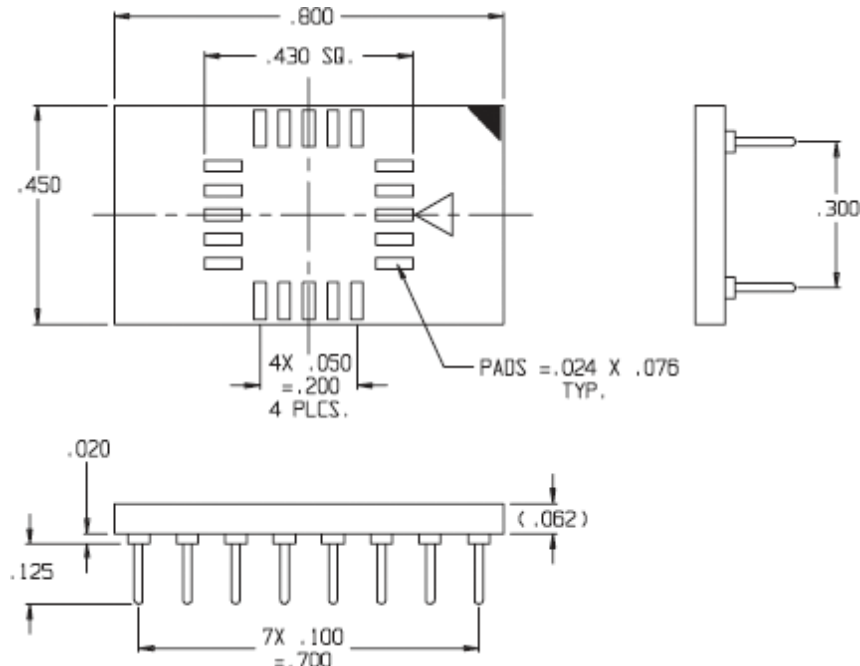
ORDERING INFORMATION

16-304633-18

16-304633-18-P for Panelized Version

ALL DIMENSIONS: INCHES [MILLIMETERS]

ALL TOLERANCES: ±0.005 [0.13] UNLESS OTHERWISE SPECIFIED



Pinout List																				
PLCC	1	2	3	4	5	6	7	8	9	10	11	12	13	14	15	16	17	18	19	20
	NC					NC					NC					NC				
DIP		1	2	3	4		5	6	7	8		9	10	11	12		13	14	15	16



ARIES
ELECTRONICS, INC.

Bristol, PA 19007-6810 USA
TEL (215) 781-9956 • FAX (215) 781-9845
WWW.ARIESELEC.COM • INFO@ARIESELEC.COM

PRINTOUTS OF THIS DOCUMENT MAY BE OUT OF DATE AND SHOULD BE CONSIDERED UNCONTROLLED

18070
Rev. AA

Mouser Electronics

Authorized Distributor

Click to View Pricing, Inventory, Delivery & Lifecycle Information:

[Aries Electronics:](#)

[16-304633-18](#)