

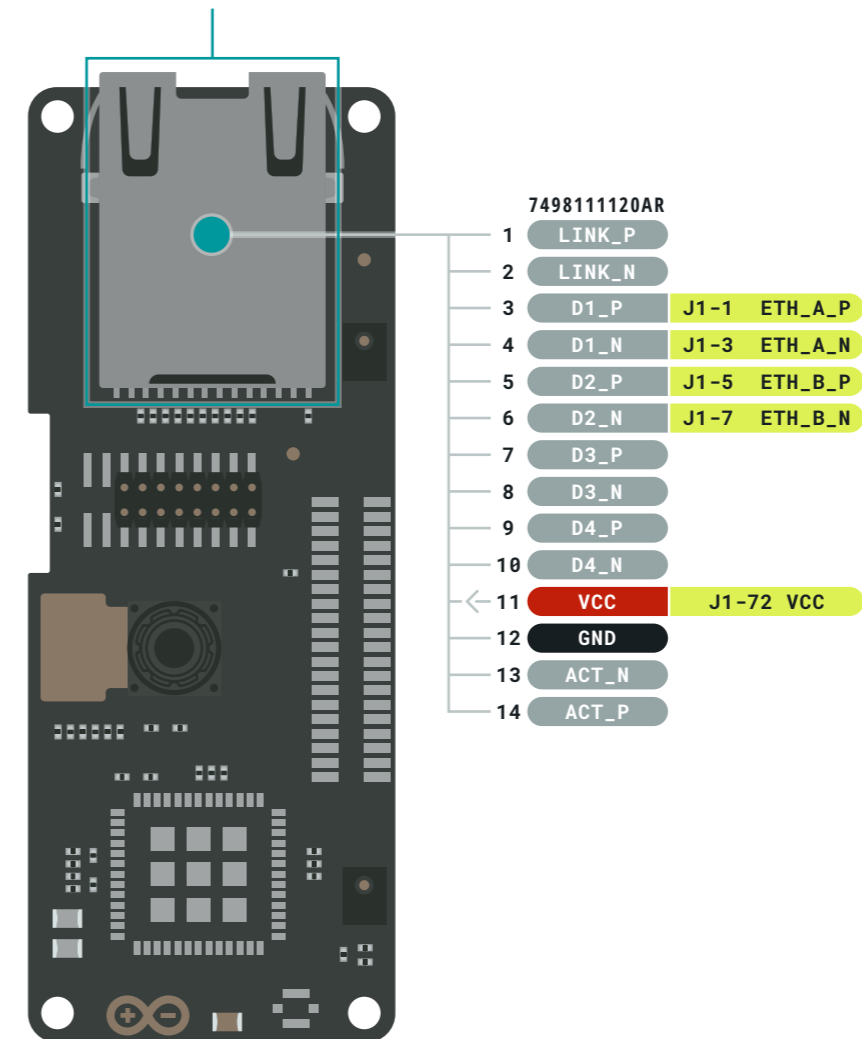
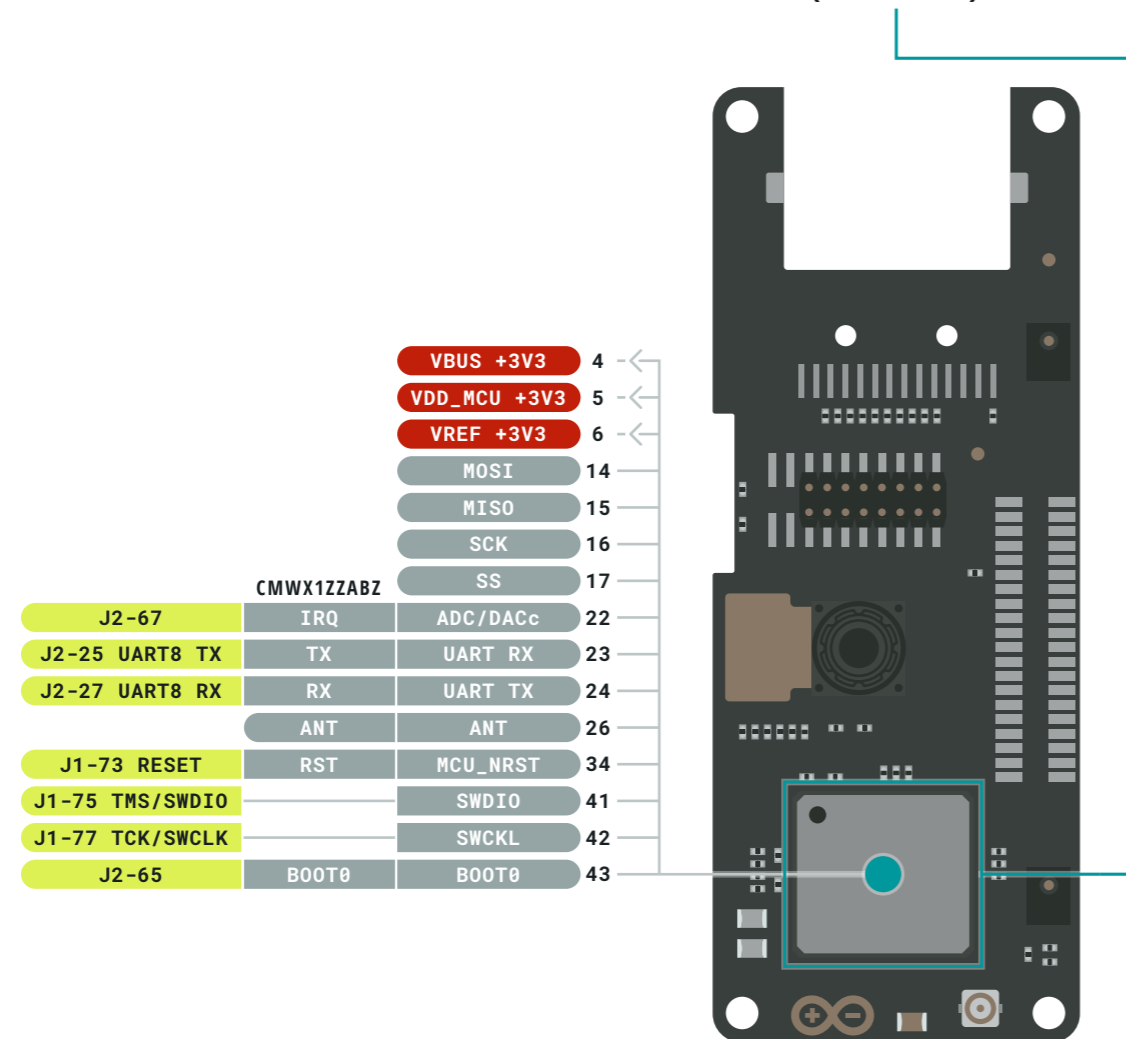
- Ground
- Power
- LED
- Internal Pin
- SWD Pin
- Digital Pin
- Analog Pin
- Other Pin
- Microcontroller's Port
- High Density Connector

- ⚠ **WARNING** Total output current sunk by sum of all I/Os and control pins is 140 mA
- ⚠ **WARNING** Total output current sourced by sum of all I/Os and control pins is 140 mA
- ⚠ **WARNING** Output current sunk by any I/O and control pin is 20 mA



The LoRa® connector is available only in the version with LoRa® Connectivity (ASX00026)

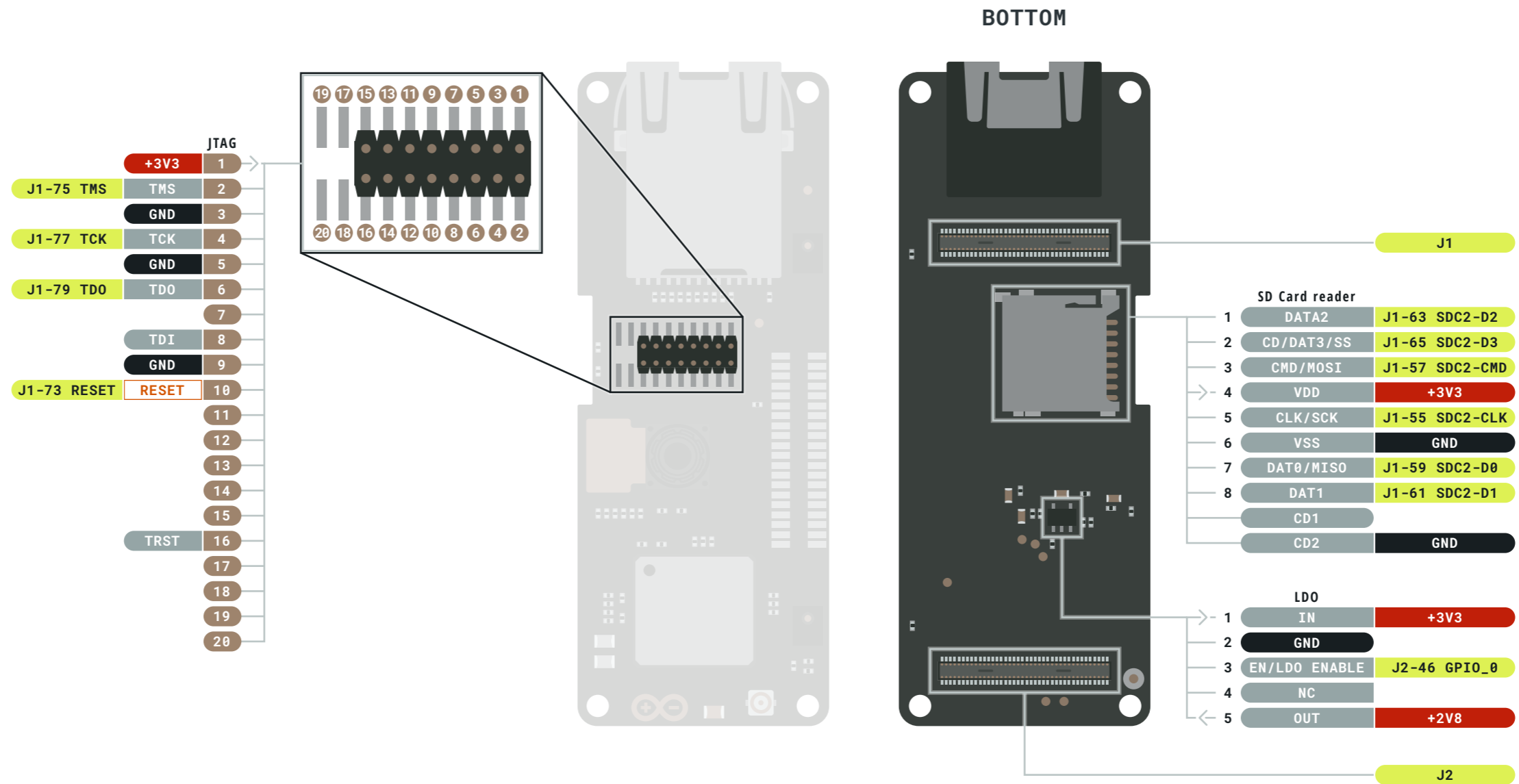
The Ethernet connector is available only in the version with Ethernet Connectivity (ASX00021)



- Ground
- Power
- LED
- Internal Pin
- SWD Pin
- Digital Pin
- Analog Pin
- Other Pin
- Microcontroller's Port
- High Density Connector

- ⚠ **WARNING** Total output current sunk by sum of all I/Os and control pins is 140 mA
- ⚠ **WARNING** Total output current sourced by sum of all I/Os and control pins is 140 mA
- ⚠ **WARNING** Output current sunk by any I/O and control pin is 20 mA





- Ground
- Power
- LED
- Internal Pin
- SWD Pin
- Digital Pin
- Analog Pin
- Other Pin
- Microcontroller's Port
- High Density Connector

- ⚠ **WARNING** Total output current sunk by sum of all I/Os and control pins is 140 mA
- ⚠ **WARNING** Total output current sourced by sum of all I/Os and control pins is 140 mA
- ⚠ **WARNING** Output current sunk by any I/O and control pin is 20 mA



Mouser Electronics

Authorized Distributor

Click to View Pricing, Inventory, Delivery & Lifecycle Information:

[Arduino:](#)

[ASX00021](#) [ASX00026](#)