

**Features:**

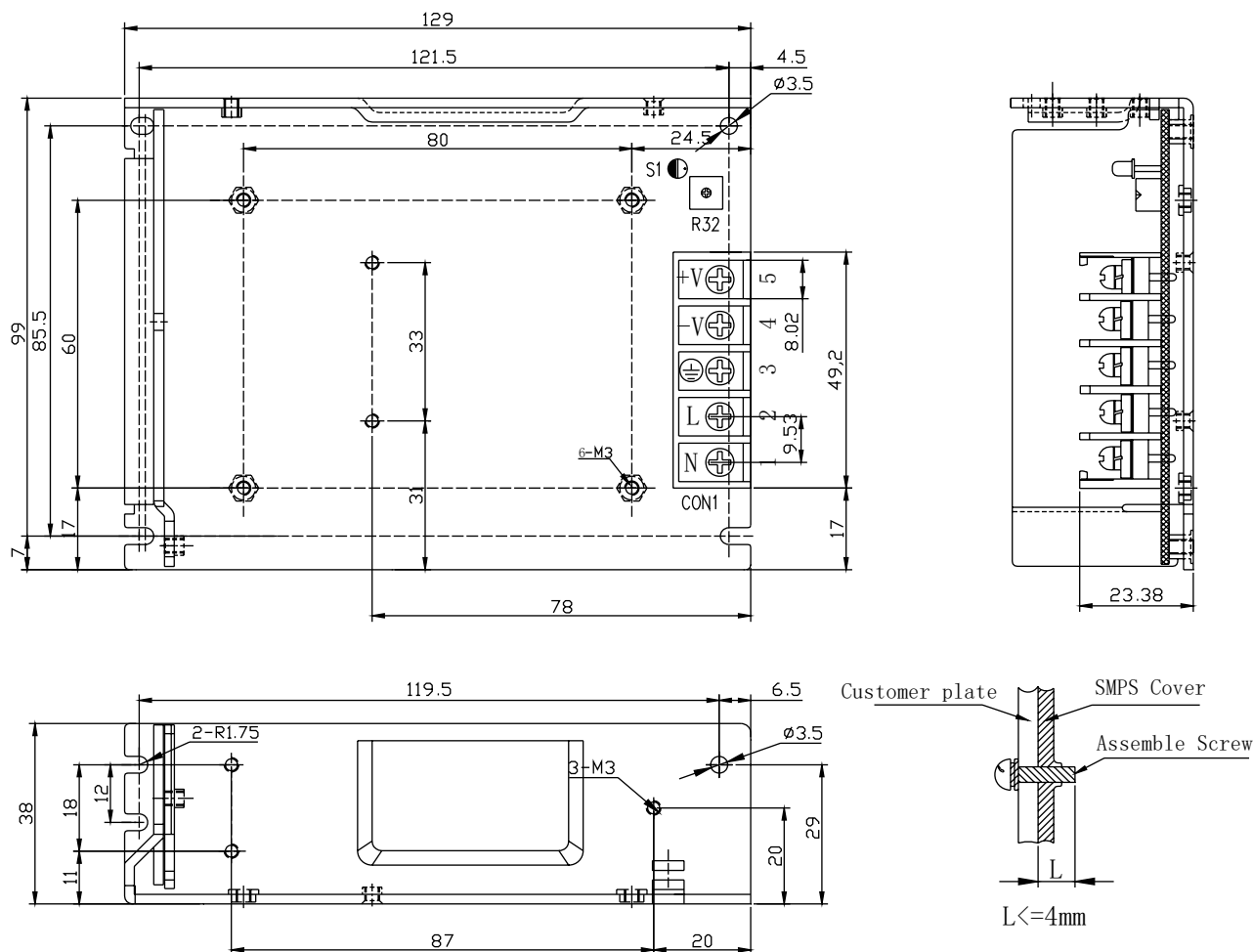
- Universal AC input/ Full range
- No Load Power Consumption <0.5W
- Wide Operating Ambient Temperature (-25°C~70°C)
- Operating Altitude up to 5000M
- High Efficiency, and High Reliability
- Output Protections: OLP/OVP/SCP
- All using 105°C long life electrolytic capacitors.
- 100% full load burn-in test
- Withstand 300VA Surge Input for 5 Sec
- PCB soldering side with conformal coating

CE CB c **UL** **US**

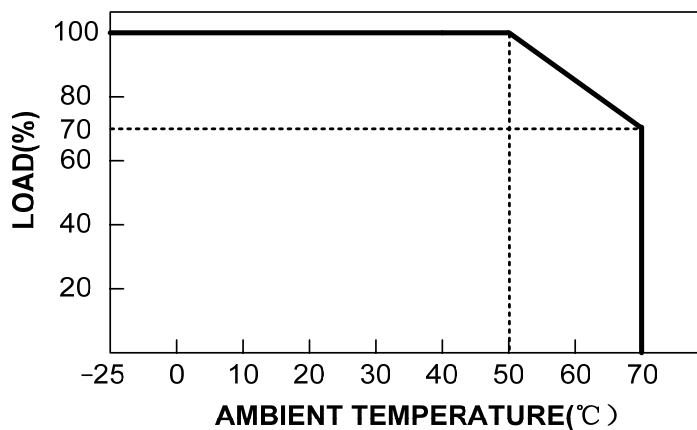
 RoHS
Compliant

Model		QPD-75-5	QPD-75-12	QPD-75-15	QPD-75-24	QPD-75-48
Output Characteristics						
DC Output		5V	12V	15V	24V	48V
Rated Current		12A	6A	5A	3.2A	1.62A
Current Range		0~12A	0~6A	0~5A	0~3.2A	0~1.62A
Ripple and Noise (-25~70°C)		80mV	120mV	150mV	200mV	200mV
Voltage ADJ. Range		±10% of rated output voltage				
Voltage Accuracy		±3.0%	±3.0%	±3.0%	±3.0%	±3.0%
Line Regulation		±0.5%	±0.5%	±0.5%	±0.5%	±0.5%
Load Regulation		±2.0%	±2.0%	±2.0%	±2.0%	±2.0%
Set-up Time		<2.0s (115VAC input, full load); <1.5s (230VAC input, full load)				
Hold-up Time		>20ms (115VAC input, full load); >50ms (230VAC input, full load)				
Temperature Coefficient		±0.03%/°C				
Overshoot and Undershoot		<5.0%				
Input Characteristics						
Voltage Range		90VAC~264VAC, 127VDC~370VDC				
Frequency Range		47Hz-63Hz				
Efficiency (Typical)	115VAC Input	79%	84%	85%	86%	88%
	230VAC Input	80%	85%	86%	87%	89%
AC Current (max)		<2.5A				
Inrush Current (Typical)		<20A@115VAC Cold start <40A@230VAC Cold start				
Leakage Current		Input-Output: <0.25mA Input-PG: <0.75mA				
Protection						
Over Load (OLP)		105%~150% of rated output current, constant power, auto recovery				
Over Voltage (OVP)		105%~150% of rated output voltage, constant voltage				
Short Circuit (SCP)		Long-term mode, auto recovery				
Environmental Characteristics						
Operating Amb. Temp. & Hum		-25°C~70°C; 20%~90% RH Non-Condensing				
Storage Temp. & Hum		-40°C~85°C; 10%-95% RH Non-Condensing				
Safety Standards		UL60950-1; EN60950-1: 2006				
Withstand Voltage		Primary-Secondary: 3.0KVAC;≤10mA. Primary-PG: 1.5KVAC;≤10mA. Secondary-PG: 0.5KVDC;≤10mA				
Isolation Resistance		≥100M ohms				
EMI Conduction & Radiation		Compliance to EN55022(CISPR22) Class B				
Harmonic Current		Compliance to EN61000-3-2,-3				
EMS Immunity		Compliance to EN61000-4-2, 3, 4, 5, 6, 8, 11; ENV50204, light industry level, criteria A				
General Characteristics						
MTBF (MIL-HDBK-217F)		More than 100,000Hrs (25°C, Full load)				
Dimension (LxWxH)		129x98x38mm				
Packing		30PCS/CTN. G.W: 14.2kgs				
Cooling Method		Cooling by free air convection				

MECHANICAL SPECIFICATIONS



DERATING CURVE



UNIT: mm

Mouser Electronics

Authorized Distributor

Click to View Pricing, Inventory, Delivery & Lifecycle Information:

Qualtek:

[QPD-75-15](#) [QPD-75-12](#) [QPD-75-48](#) [QPD-75-5](#) [QPD-75-24](#)