

PE-6189NL

4

3

2

1

NOTICE: THE INFORMATION AND
DATA CONTAINED HEREIN IS THE
PROPERTY OF PULSAR AND
RESERVES ALL RIGHTS THEREO.

TEST NOTES:

UNLESS OTHERWISE SPECIFIED, TESTING IS PERFORMED AT 25°C ±5°C.

1. TURNS RATIO: 26:26:4:4:1210 ±5%
2. POLARITY: PER SCHEMATIC
3. INSULATION RESISTANCE:
(1-3) TO (7-8) = 10 KMEG OHMS MINIMUM AT 500 Vdc
(4-6) TO (7-8) = 10 KMEG OHMS MINIMUM AT 500 Vdc
(1-3) TO (4-6) = 10 KMEG OHMS MINIMUM AT 100 Vdc

4. HIPOT:

2500 VRMS (1-3) TO (7-8) AND (4-6) TO (7-8)
100 VRMS (1-3) TO (4-6)

5. FUNCTIONAL TEST:

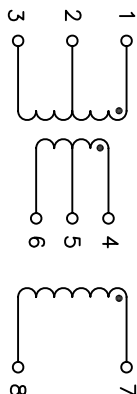
- 5.1 SET UP EQUIPMENT PER TEST SET-UP OF FIGURE 4, SHEET 3
- 5.2 PLUG STANDARD UNIT INTO FIXTURE C-JM-17061
- 5.3 ADJUST POWER SUPPLY UP TO 28 Vdc
- 5.4 DECREASE THE RESISTANCE OF THE DECADE BOX STARTING FROM THE LARGEST DECADE UNTIL FULL LOAD CURRENT OF 4 mA IS REACHED. APPROXIMATE $R_L = 312 \text{ KOHMS} - 10 \text{ WATTS}$.
- 5.5 THE OUTPUT VOLTAGE SHALL BE: 1250 V NOM.
- 5.6 ALL SUBSEQUENT UNITS TESTED SHALL HAVE AN OUTPUT VOLTAGE BETWEEN 1125 V MINIMUM AND 1375 V MAXIMUM

*6. INDUCED VOLTAGE TEST: APPLY 28 VRMS TO LEADS 1, 2 AT A FREQUENCY

ABOVE THE FREQUENCY OF SELF OSCILLATION (SUGGEST 50 KHZ) FOR 15 SECONDS. MONITOR INPUT CURRENT AND OBSERVE THAT ABRUPT CHANGES DO NOT OCCUR. RADICAL OR ABRUPT CHANGES INDICATE ARCING OR BREAKDOWN. CURRENT MONITORING SHOULD BE ACCOMPLISHED BY A SERIES RESISTOR OR OTHER SUITABLE MEANS. IF A RESISTOR IS USED A HIGH IMPEDANCE SCOPE OR VTVM SHOULD BE USED AS A MONITORING DEVICE.

(* REF ONLY DUPLICATED CONDITIONS OF TEST NOTE 5)

7. $I_{MAG} = 20 \text{ mA MINIMUM} - 70 \text{ mA MAXIMUM}$
 $E = 15 \text{ V}$, $t_w = 20 \text{ } \mu\text{S}$, $P_{rr} = 1 \text{ KHz}$
USE STD. TRANSISTOR SWITCH
8. LL: (1-3) TO (7-8) SHORT = 14 μH MAXIMUM
100 KHz AT .02 VRMS ON HP-4277A
9. CWW: (1-3) TO (4-6) = 27 pF MAXIMUM
(1-3) TO (7-8) = 17 pF MAXIMUM
100 KHz AT .02 VRMS ON HP-4277A
10. DCR:
(1-3) = .78 OHMS MAXIMUM
(4-6) = .15 OHMS MAXIMUM
(7-8) = 480 OHMS MAXIMUM



SCHEMATIC

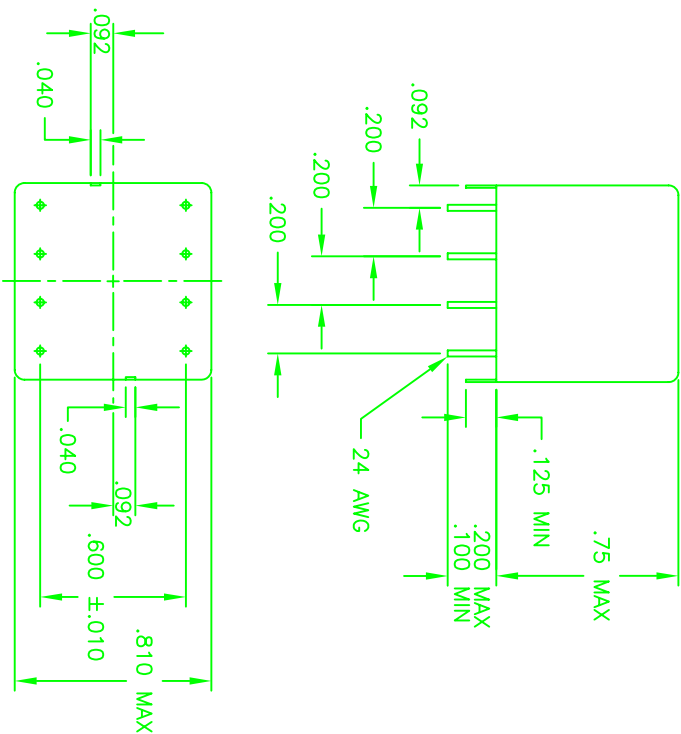
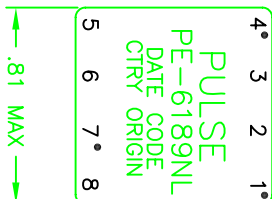


FIGURE 5 - FINAL OUTLINE

UNLESS OTHERWISE SPECIFIED, ALL
DIMENSIONS ARE IN INCHES
TOLERANCES ARE:
DIMENSIONS .010 ±.01
DIMENSIONS .005 ±.005
DO NOT SCALE DRAWING

SIZE CODE B01961 DWG. NO. PE-6189NL
SCALE NONE CADD FILE SHEET 4 OF 4
REV 11

Mouser Electronics

Authorized Distributor

Click to View Pricing, Inventory, Delivery & Lifecycle Information:

Pulse:

[PE-6189NL](#)