

**Description: 1608 2.4G&5GHz Diplexer**
**PART NUMBER: DPX1608LL83R2455A**
**Features:**

- Compact size : 1.6x0.8x0.6mm
- RoHS compliant

**Applications:**

- WLAN, 802.11a/b/g/n
- ISM Band

**ELECTRICAL SPECIFICATIONS**

DESCRIPTION	Value	
Pass Band	Low Band	High Band
	2400 ~ 2500 MHz	4900 ~ 5950 MHz
Insertion Loss	0.5 dB (Max.)	1.0 dB (Max.)
Return Loss	10dB (Min.)	10dB (Min.)
Attenuation	25 dB(Min). @ 4800 ~ 5000 MHz	32 dB(Min). @ 30 ~ 2700 MHz
	25 dB(Min). @ 7200 ~ 7500 MHz	15 dB(Min). @ 9800 ~ 11900 MHz
		11 dB(Min). @ 14700 ~ 17850 MHz
Operating Temperature	-40 ~ 85°C	

In the effort to improve our products, we reserve the right to make changes judged to be necessary.

CONFIDENTIAL AND PROPRIETARY INFORMATION

This document contains confidential and proprietary information of Pulse Electronics, Inc. (Pulse) and is protected by copyright, trade secret and other state and federal laws. Its receipt or possession does not convey any rights to reproduce, disclose its contents, or to manufacture, use or sell anything it may describe. Reproduction, disclosure or use without specific written authorization of Pulse is strictly forbidden.

For more information:



Pulse Worldwide Headquarters  
 15255 Innovation Drive #100  
 San Diego, CA 92128  
 USA  
 Tel: 1-858-674-8100

Pulse/Larsen Antennas  
 18110 SE 34<sup>th</sup> St Bldg 2 Suite 250  
 Vancouver, WA 98683  
 USA  
 Tel: 1-360-944-7551

Europe Headquarters  
 Pulse GmbH & Co, KG  
 Zeppelinstrasse 15  
 Herrenberg, Germany  
 Tel: 49 7032 7806 0

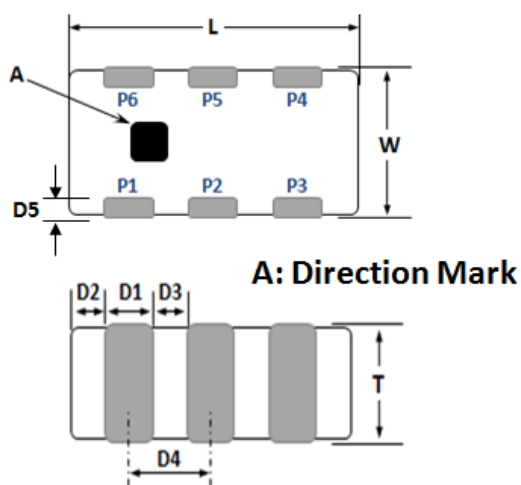
Pulse (Suzhou) Wireless Products Co, Inc.  
 99 Huo Ju Road(#29 Bldg, 4<sup>th</sup> Phase  
 Suzhou New District  
 Jiangsu Province, Suzhou 215009 PR China  
 Tel: 86 512 6807 9998

## Description: 1608 2.4G&5GHz Diplexer

**PART NUMBER: DPX1608LL83R2455A**

### MECHANICAL DIMENSION

#### Outline



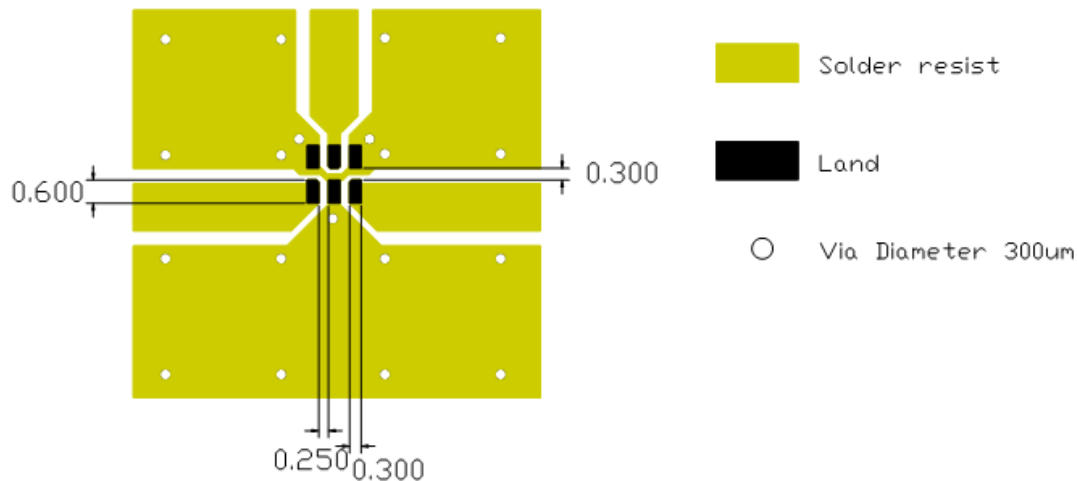
#### Termination

Terminal name	Function
P1	GND
P2	Common
P3	GND
P4	High band
P5	GND
P6	Low band

#### Mechanical

	Dimension
L (mm)	1.60±0.15
W (mm)	0.80±0.15
T (mm)	0.60±0.15
D1 (mm)	0.20±0.10
D2 (mm)	0.20±0.15
D3 (mm)	0.30±0.10
D4 (mm)	0.50±0.05
D5 (mm)	0.15±0.10

### Reference design of EVB



Line width should be designed to match 50Ω characteristic impedance, depending on PCB material and thickness.

In the effort to improve our products, we reserve the right to make changes judged to be necessary.

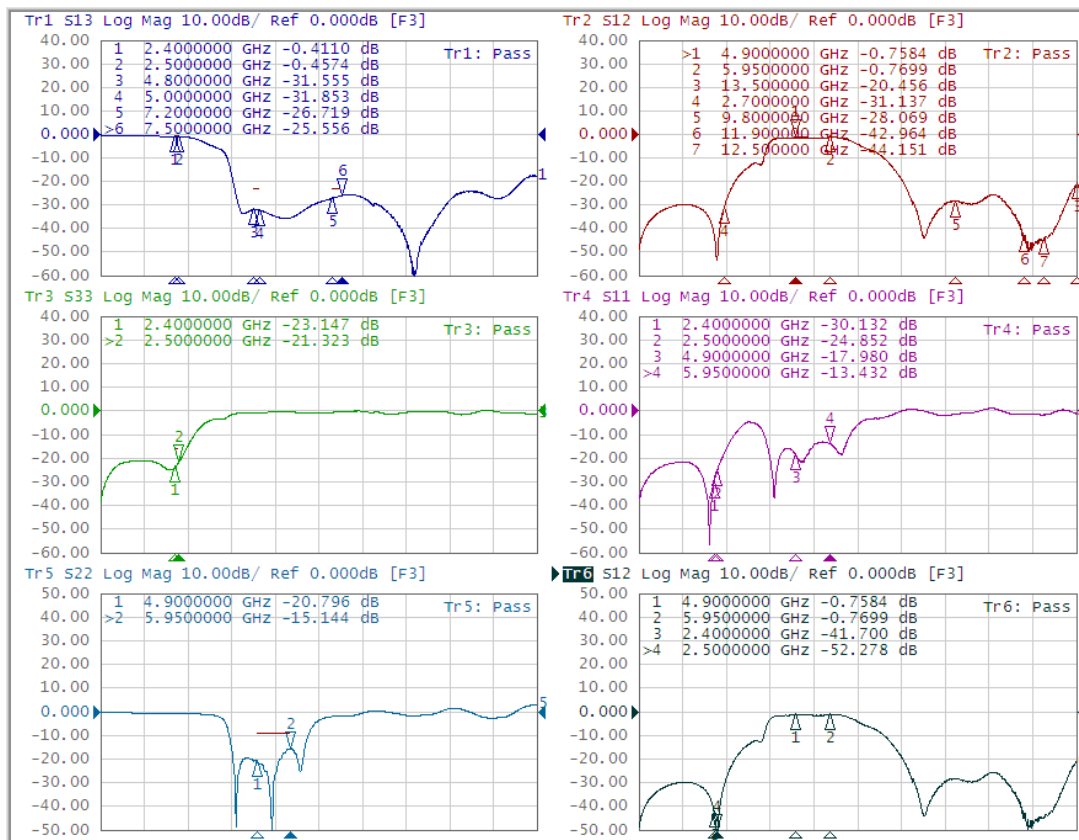
CONFIDENTIAL AND PROPRIETARY INFORMATION

This document contains confidential and proprietary information of Pulse Electronics, Inc. (Pulse) and is protected by copyright, trade secret and other state and federal laws. Its receipt or possession does not convey any rights to reproduce, disclose its contents, or to manufacture, use or sell anything it may describe. Reproduction, disclosure or use without specific written authorization of Pulse is strictly forbidden.

## Description: 1608 2.4G&5GHz Diplexer

**PART NUMBER: DPX1608LL83R2455A**

### ELECTRICAL PERFORMANCES



- Measured on Agilent E5071C Network Analyzer
- Common port : Port 1 (Return loss : S22)
- Low band port : Port 3 (Low band Insertion loss S13, and attenuation at high band)
- High band port : Port 2 (High band Insertion loss S12, and attenuation at low band)

#### Frequency Characteristics

In the effort to improve our products, we reserve the right to make changes judged to be necessary.

CONFIDENTIAL AND PROPRIETARY INFORMATION

This document contains confidential and proprietary information of Pulse Electronics, Inc. (Pulse) and is protected by copyright, trade secret and other state and federal laws. Its receipt or possession does not convey any rights to reproduce, disclose its contents, or to manufacture, use or sell anything it may describe. Reproduction, disclosure or use without specific written authorization of Pulse is strictly forbidden.

**Description:** 1608 2.4G&5GHz Diplexer

**PART NUMBER: DPX1608LL83R2455A**

## REVISION HISTORY

Revision	Date	Description
Version 1	Oct. 06, 2020	- New issue

# Mouser Electronics

Authorized Distributor

Click to View Pricing, Inventory, Delivery & Lifecycle Information:

Pulse:

[DPX1608LL83R2455A](#)