

**Description:** 2.4-2.5GHz Dipole swivel stick antenna**PART NUMBER: W1030****Features:**

- Frequency 2400-2500MHz
- Gain 2.0 dBi
- Return Loss -10dB
- Length 108mm Straight position
- Connector:
  - RP SMA Male as default
  - SMA Male available by request

**Applications:**

- 2.4GHz ISM band radios
- Bluetooth, BLE, Zigbee
- WLAN, WiFi 802.11x for 2.4GHz
- Indoor use

All dimensions are in mm / inches

Issue: 2047

In the effort to improve our products, we reserve the right to make changes judged to be necessary.

CONFIDENTIAL AND PROPRIETARY INFORMATION

This document contains confidential and proprietary information of Pulse Electronics, Inc. (Pulse) and is protected by copyright, trade secret and other state and federal laws. Its receipt or possession does not convey any rights to reproduce, disclose its contents, or to manufacture, use or sell anything it may describe. Reproduction, disclosure or use without specific written authorization of Pulse is strictly forbidden.

For more information:

Pulse Worldwide Headquarters  
15255 Innovation Drive #100  
San Diego, CA 92128  
USA  
Tel: 1-858-674-8100

Pulse/Larsen Antennas  
18110 SE 34<sup>th</sup> St Bldg 2 Suite 250  
Vancouver, WA 98683  
USA  
Tel: 1-360-944-7551

Europe Headquarters  
Pulse GmbH & Co, KG  
Zeppelinstrasse 15  
Herrenberg, Germany  
Tel: 49 7032 7806 0

Pulse (Suzhou) Wireless Products Co, Inc.  
99 Huo Ju Road(#29 Bldg, 4<sup>th</sup> Phase  
Suzhou New District  
Jiangsu Province, Suzhou 215009 PR China  
Tel: 86 512 6807 9998

**Series: Stick Antenna****Description :** 2.4-2.5GHz Dipole swivel stick antenna**PART NUMBER: W1030****ELECTRICAL SPECIFICATIONS**

Antenna Type	1/2 $\lambda$ Swivel Type Dipole Antenna
Frequency	2.4-2.5 GHz
Nominal Impedance	50 $\Omega$
Return Loss	$\leq -10$ dB
Radiation Pattern	Omni
Gain	2.0 dBi
Polarization	Vertical
Electrical Length	1/2 $\lambda$ dipole

**MECHANICAL SPECIFICATIONS**

Overall Length	108 mm
Weight	6.3 g
Antenna Color	Black
Connector type	Reverse SMA (Male), default SMA (Male), by request

**ENVIRONMENTAL SPECIFICATIONS**

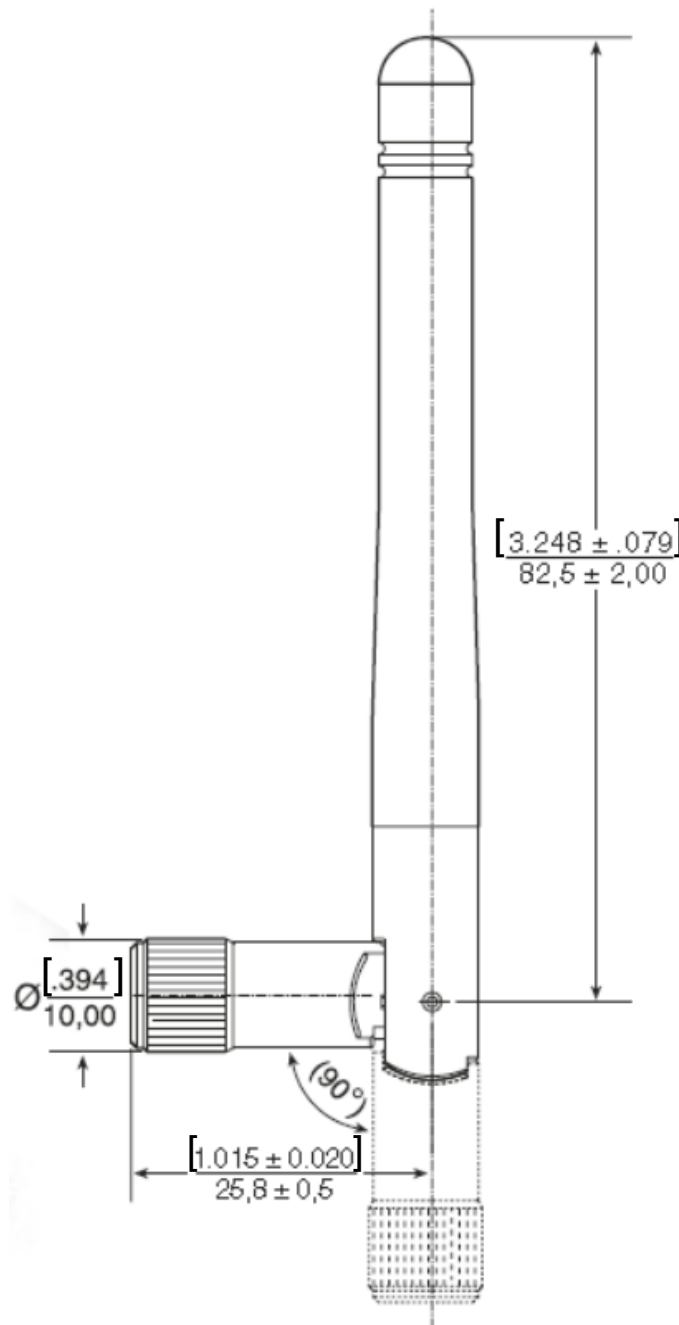
Operating Temperature	-40~+85° C
Storage Temperature	-40~+85° C
RoHS Compliant	Yes

**Description :** 2.4-2.5GHz Dipole swivel stick antenna

**Series:** Stick Antenna

**PART NUMBER:** W1030

## MECHANICAL DRAWING



Issue: 2047

In the effort to improve our products, we reserve the right to make changes judged to be necessary.

CONFIDENTIAL AND PROPRIETARY INFORMATION

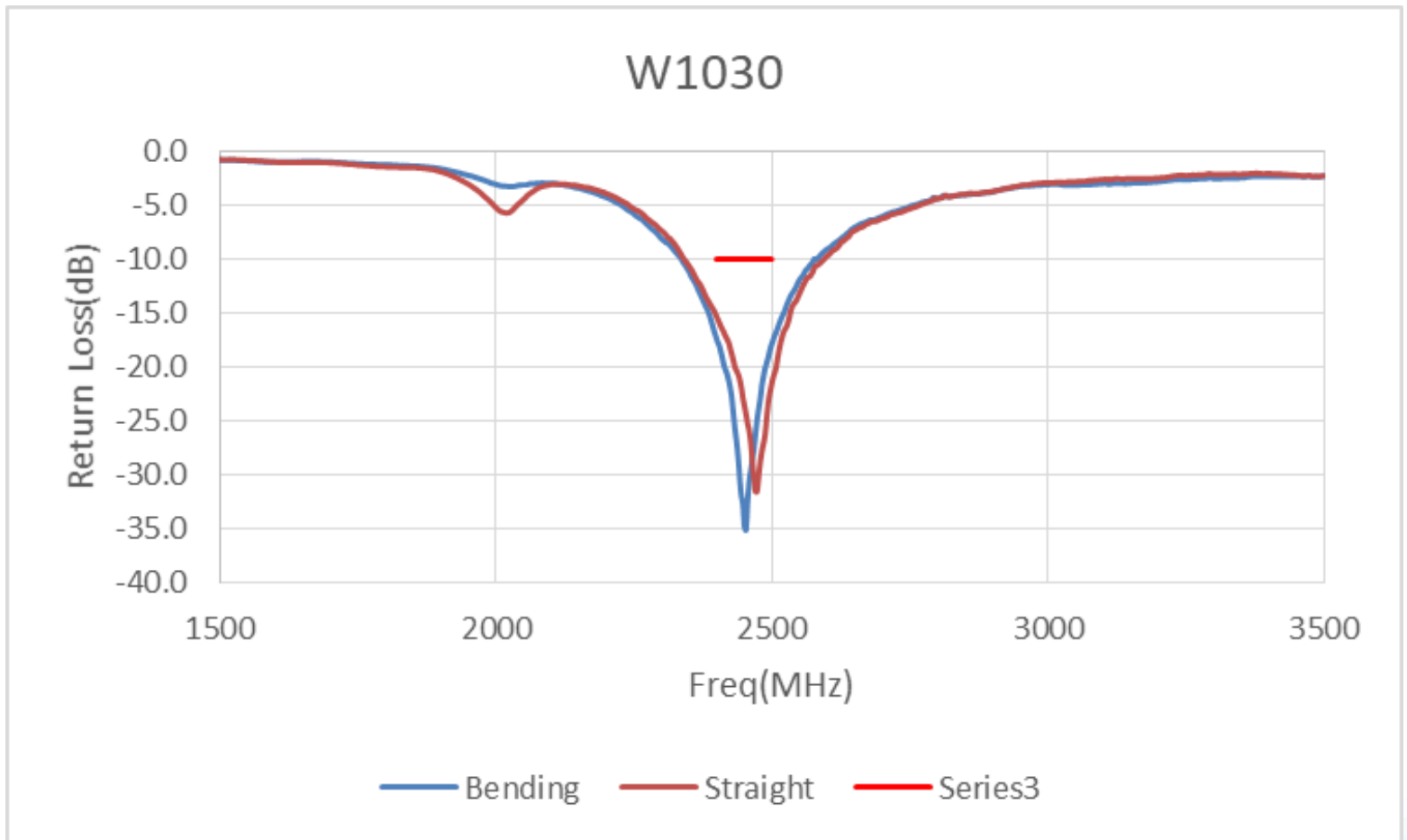
This document contains confidential and proprietary information of Pulse Electronics, Inc. (Pulse) and is protected by copyright, trade secret and other state and federal laws. Its receipt or possession does not convey any rights to reproduce, disclose its contents, or to manufacture, use or sell anything it may describe. Reproduction, disclosure or use without specific written authorization of Pulse is strictly forbidden.

**Description :** 2.4-2.5GHz Dipole swivel stick antenna

**Series:** Stick Antenna

**PART NUMBER:** W1030

### Return Loss

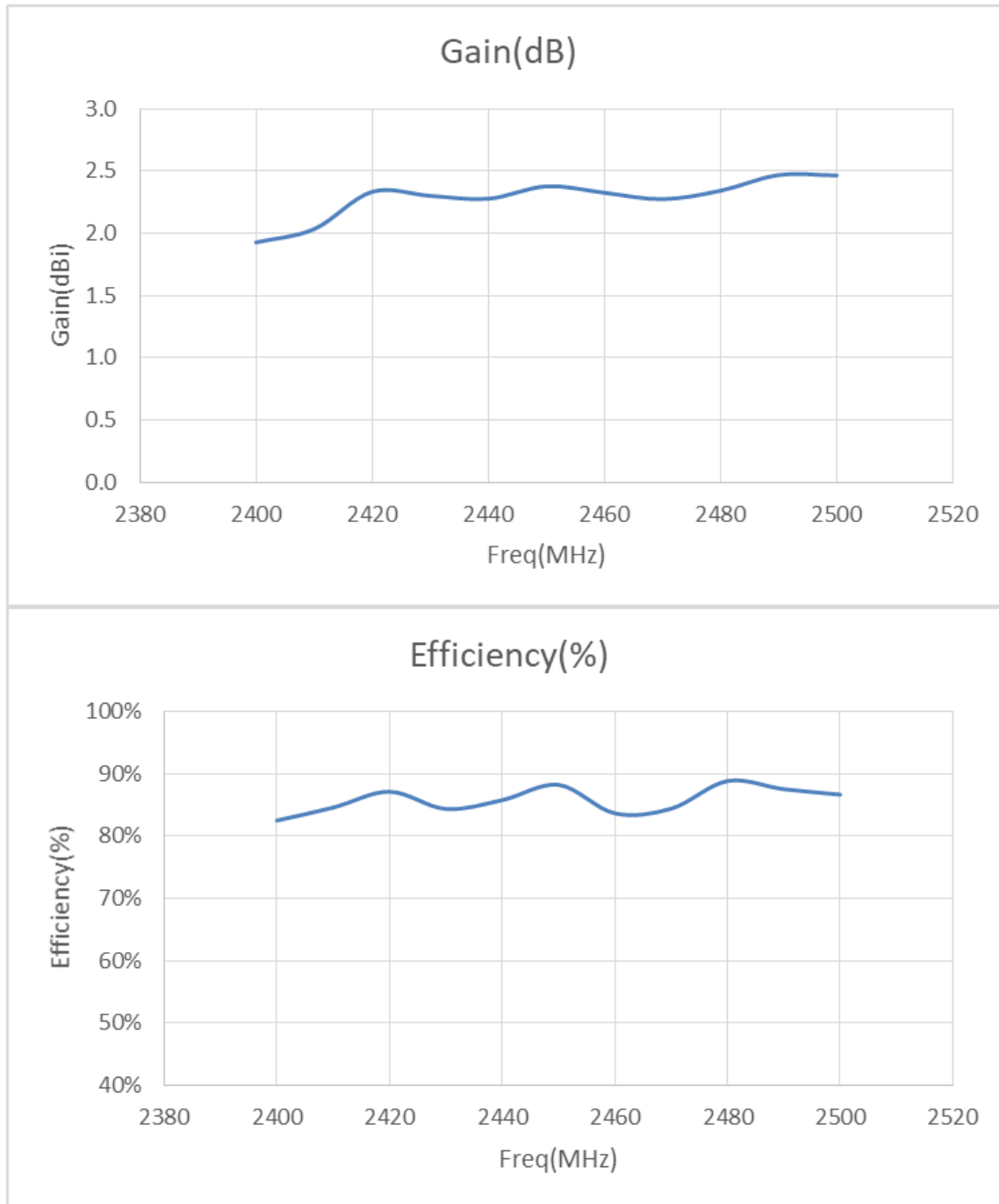


Issue: 2047

In the effort to improve our products, we reserve the right to make changes judged to be necessary.

CONFIDENTIAL AND PROPRIETARY INFORMATION

This document contains confidential and proprietary information of Pulse Electronics, Inc. (Pulse) and is protected by copyright, trade secret and other state and federal laws. Its receipt or possession does not convey any rights to reproduce, disclose its contents, or to manufacture, use or sell anything it may describe. Reproduction, disclosure or use without specific written authorization of Pulse is strictly forbidden.

**Description :** 2.4-2.5GHz Dipole swivel stick antenna**Series:** Stick Antenna**PART NUMBER:** W1030**Gain and efficiency**

Issue: 2047

In the effort to improve our products, we reserve the right to make changes judged to be necessary.

CONFIDENTIAL AND PROPRIETARY INFORMATION

This document contains confidential and proprietary information of Pulse Electronics, Inc. (Pulse) and is protected by copyright, trade secret and other state and federal laws. Its receipt or possession does not convey any rights to reproduce, disclose its contents, or to manufacture, use or sell anything it may describe. Reproduction, disclosure or use without specific written authorization of Pulse is strictly forbidden.

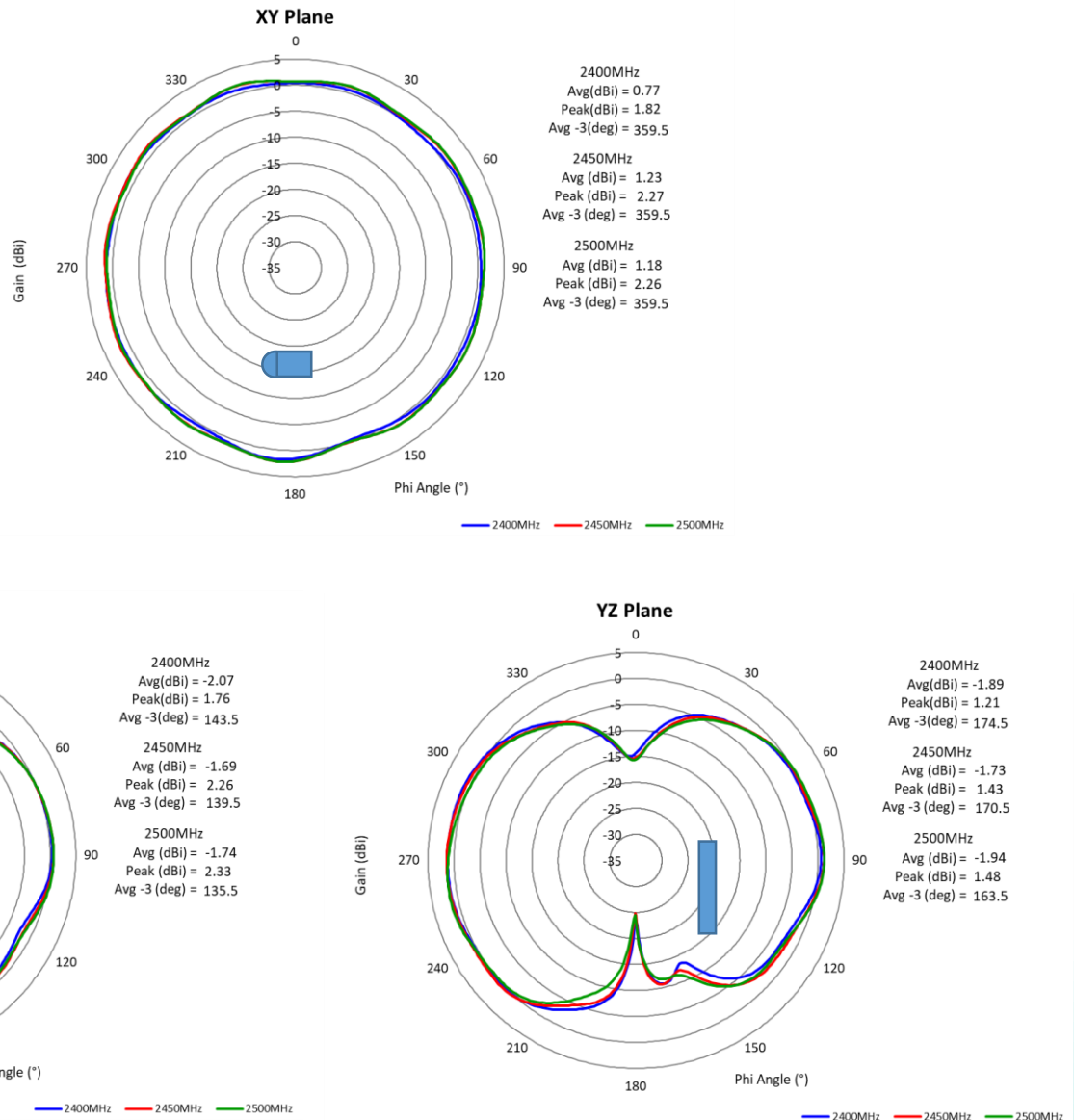
### Series: Stick Antenna

**Description :** 2.4-2.5GHz Dipole swivel stick antenna

**PART NUMBER: W1030**

## CHARTS

### Radiation pattern



Issue: 2047

In the effort to improve our products, we reserve the right to make changes judged to be necessary.

CONFIDENTIAL AND PROPRIETARY INFORMATION

This document contains confidential and proprietary information of Pulse Electronics, Inc. (Pulse) and is protected by copyright, trade secret and other state and federal laws. Its receipt or possession does not convey any rights to reproduce, disclose its contents, or to manufacture, use or sell anything it may describe. Reproduction, disclosure or use without specific written authorization of Pulse is strictly forbidden.

**Series: Stick Antenna****Description :** 2.4-2.5GHz Dipole swivel stick antenna**PART NUMBER: W1030****PACKAGING**

Pack 20pcs antenna in one PE bag, 30pcs PE bag (600pcs Antenna) in one carton.

# Mouser Electronics

Authorized Distributor

Click to View Pricing, Inventory, Delivery & Lifecycle Information:

Pulse:

[W1028](#) [W1030](#)