

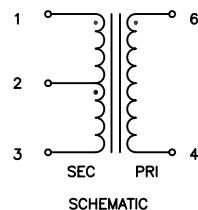


## CX2049LNL

BALUN TRANSFORMER  
1:8CT, 0.25 – 500 MHz  
SURFACE MOUNT

NOTES: UNLESS OTHERWISE SPECIFIED:

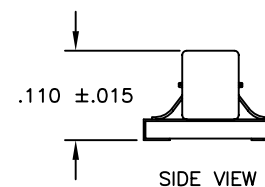
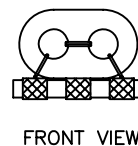
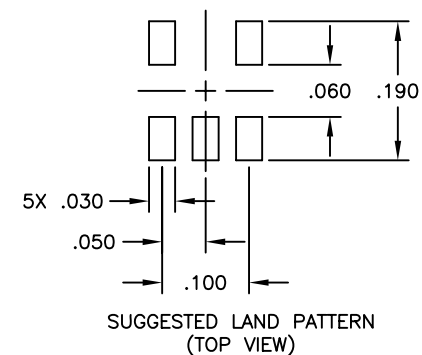
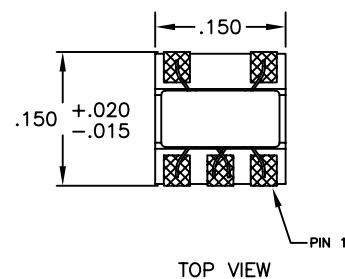
1. OPERATING TEMPERATURE:  $-40^{\circ}\text{C}$  TO  $+85^{\circ}\text{C}$
2. STORAGE TEMPERATURE:  $-20^{\circ}\text{C}$  TO  $+125^{\circ}\text{C}$
3. JEDEC MOISTURE SENSITIVITY LEVEL 1
4. DIMENSIONS ARE IN INCHES WITH THE FOLLOWING TOLERANCE:  
.XX =  $\pm 0.02$   
.XXX =  $\pm 0.010$
5. OPTIONAL TAPE & REEL PACKAGING CAN BE ORDERED BY ADDING A "T" SUFFIX TO THE PART NUMBER. ie: CX2049LNLT
6. ROHS COMPLIANT



## ELECTRICAL SPECIFICATIONS @ 25°C:

IMPEDANCE RATIO	TURNS RATIO (Pri:Sec)	OCL (Pin 6-4)	BANDWIDTH			INSERTION LOSS @ MIDBAND
			3.0 dB	2.0 dB	1.0 dB	
1:8CT	1:2.83CT	41.4uH (TYP)	.25-500 MHz	.30-400 MHz	.50-200 MHz	1.16dB (TYP)

## MECHANICAL SPECIFICATIONS:



© Copyright, 2010. Pulse Engineering, Inc. All rights reserved. Drawing specifications subject to change without notice. Date (05/11/11)

PULSE CONFIDENTIAL  
&  
PROPRIETARY

PRODUCT SPECIFICATION:

TRANSFORMER, BALUN, 1:8CT1, 0.25-500MHz, SM

DWG. NO./ PART NO.

CX2049LNL

SHEET:

1

REV.

M10

Pulse Electronics

12220 World Trade Drive  
San Diego, CA, USA, 92128  
Tel: 858 674 8100

# Mouser Electronics

Authorized Distributor

Click to View Pricing, Inventory, Delivery & Lifecycle Information:

Pulse:

[CX2049LNLT](#)