

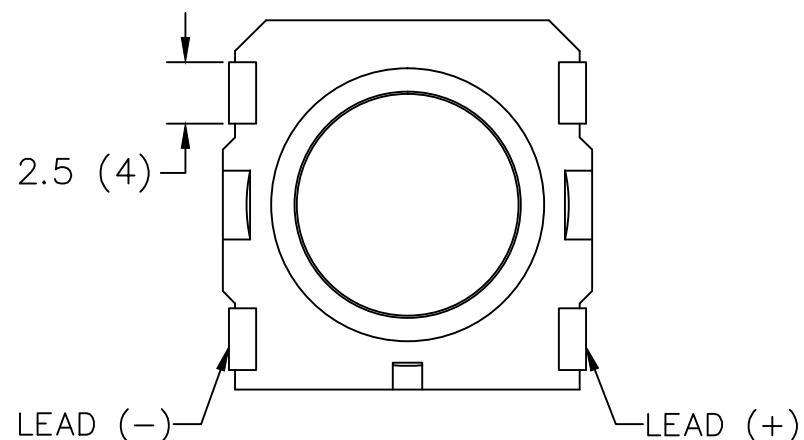
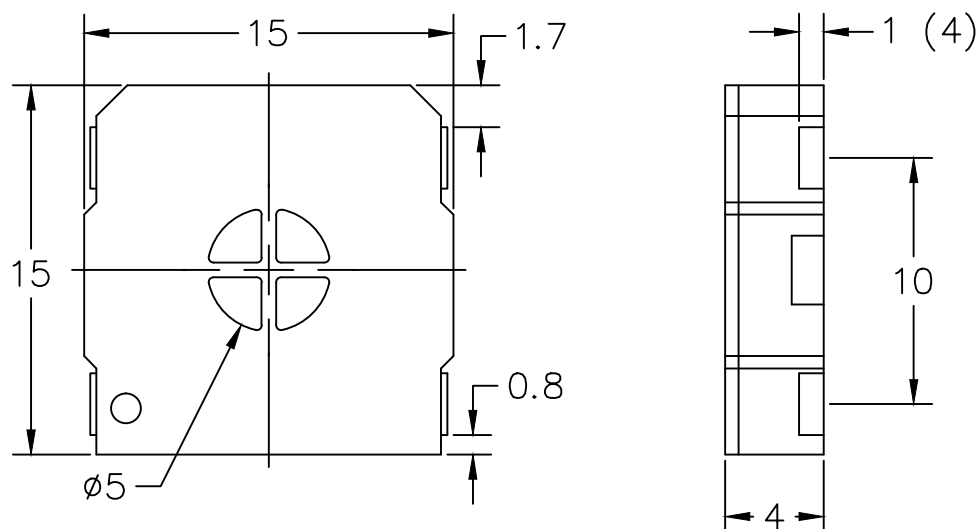
THIS DOCUMENT CONTAINS DATA PROPRIETARY TO PROJECTS UNLIMITED, INC. ANY USE OR REPRODUCTION, IN ANY FORM, WITHOUT PRIOR WRITTEN PERMISSION OF PROJECTS UNLIMITED, INC. IS PROHIBITED.
© 2005, Projects Unlimited Inc.

SPECIFICATIONS

PARAMETERS	VALUES	UNITS
RATED INPUT POWER	0.5	W
MAX INPUT POWER	0.8	W
IMPEDANCE	4±15%	OHM
OUTPUT SPL @ 0.5W/0.1M (AT 1.0, 1.6, 2.0, 3.2 kHz)	87±3	dBA
DISTORTION (MAX.)	5%	—
RESONANT FREQUENCY	800±20%	Hz
FREQUENCY RANGE	640 ~ 20,000	Hz
HOUSING MATERIAL	LCP	—
CONE MATERIAL	KAPTON	—
MAGNET MATERIAL	SmCo	—
OPERATING TEMPERATURE	-30 ~ +85	°C
WEIGHT	1.5	grams

REVISIONS

LTR	DESCRIPTION	DATE	APPROVED
—	RELEASED FROM ENGINEERING	4/9/12	



NOTES:

1. ALL DIMENSIONS ARE IN MILLIMETERS.
2. SPECIFICATION SUBJECT TO CHANGE OR WITHDRAWAL WITHOUT NOTICE.
3. THIS PART IS RoHS 2002/95/EC COMPLIANT.

UNLESS OTHERWISE SPECIFIED:
DIMENSIONS ARE IN
MILLIMETERS, TOLERANCES ARE ±0.5 AND
ANGLES ARE ±3°.



3541 Stop Eight Road
Dayton, Ohio 45414

APPROVALS		DATE	SPEAKER	
DRAWN	J.D.	4/12	SIZE	DRAWING NO.
CHECKED	M.L.	4/12	A	SMS-1504MS-2-R
APPROVED	B.R.	4/12	SCALE: N.T.S.	SHEET 1 OF 1

FILE NAME
SMS-1504MS-2-R.DWG

Mouser Electronics

Authorized Distributor

Click to View Pricing, Inventory, Delivery & Lifecycle Information:

[PUI Audio:](#)

[SMS-1504MS-2-R](#)