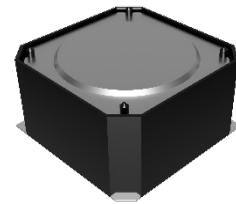




PUIaudio



Data Sheet

HD-LA1307-SM

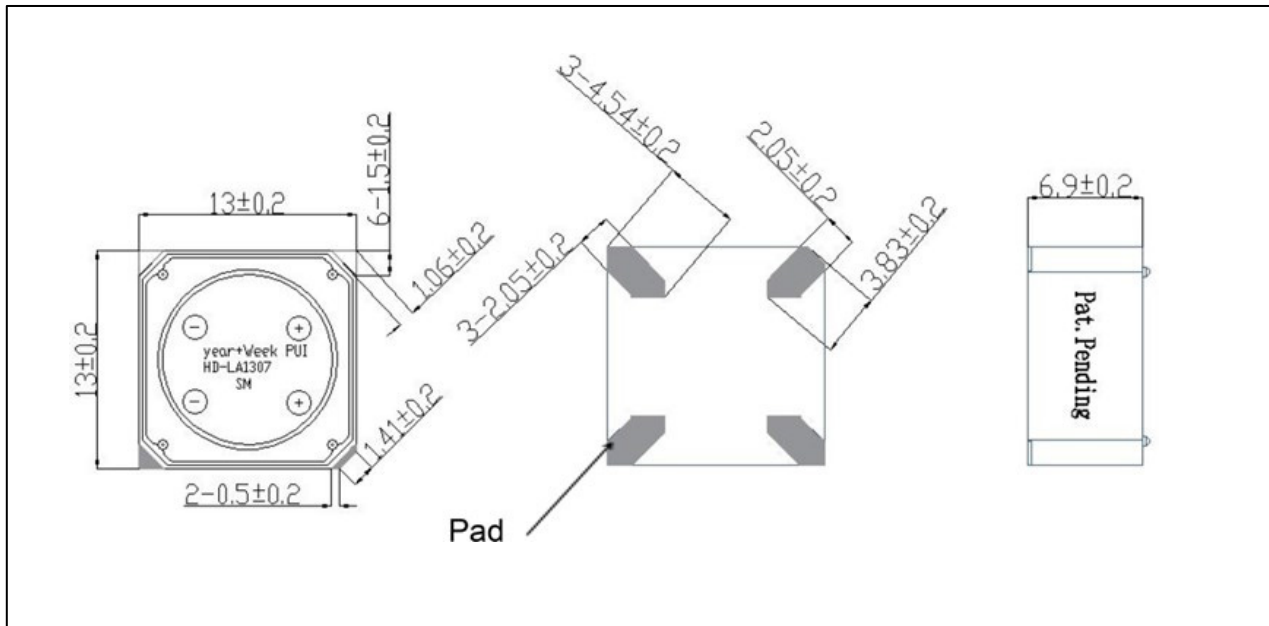
Features:

- PUI Audio's Patented Haptic Technology
- Surface Mount Technology is ideal for virtual realities environment, gaming consoles, medical simulators, handheld devices, consumer and industrial control interfaces.
- Designed by PUI Audio to provide immediate, high-resolution tactile feedback in nearly any application.

Specifications

Parameters	Values	Units
Maximum Input Voltage (AC sine wave)	2	V _{RMS}
Input Voltage Range	1~2	V _{RMS}
Maximum Current Draw (at 2Vrms)	≤ 90	mA
Coil Resistance	22 ± 15%	Ohms
Resonant Frequency	154 ± 15	Hz
Maximum Acceleration	1.8 ± 0.3	Gpp
Weight	2.4 ± 0.5	grams
Storage Temperature	-40 ~ +75°C	°C
Operating Temperature	-20 ~ +65°C	°C

Dimensions (+/- markings indicate polarity; pins of same polarity are connected internally)



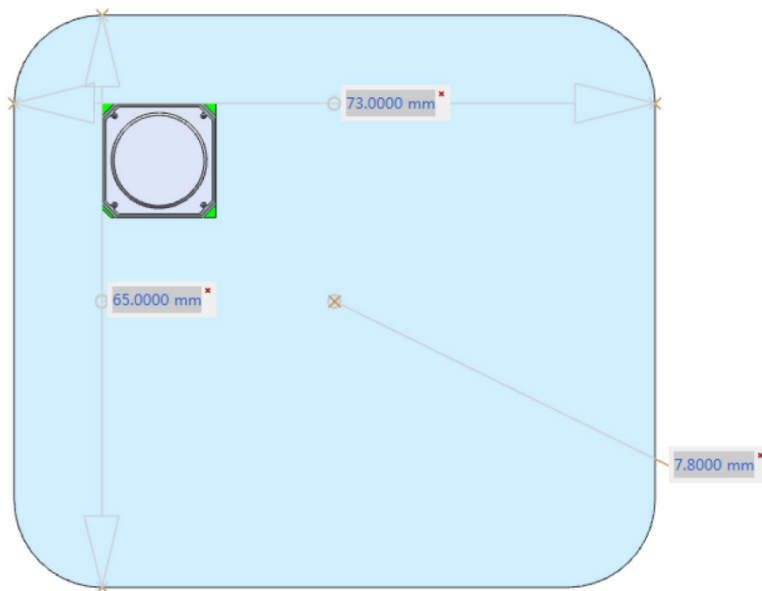
Acceleration Frequency Response

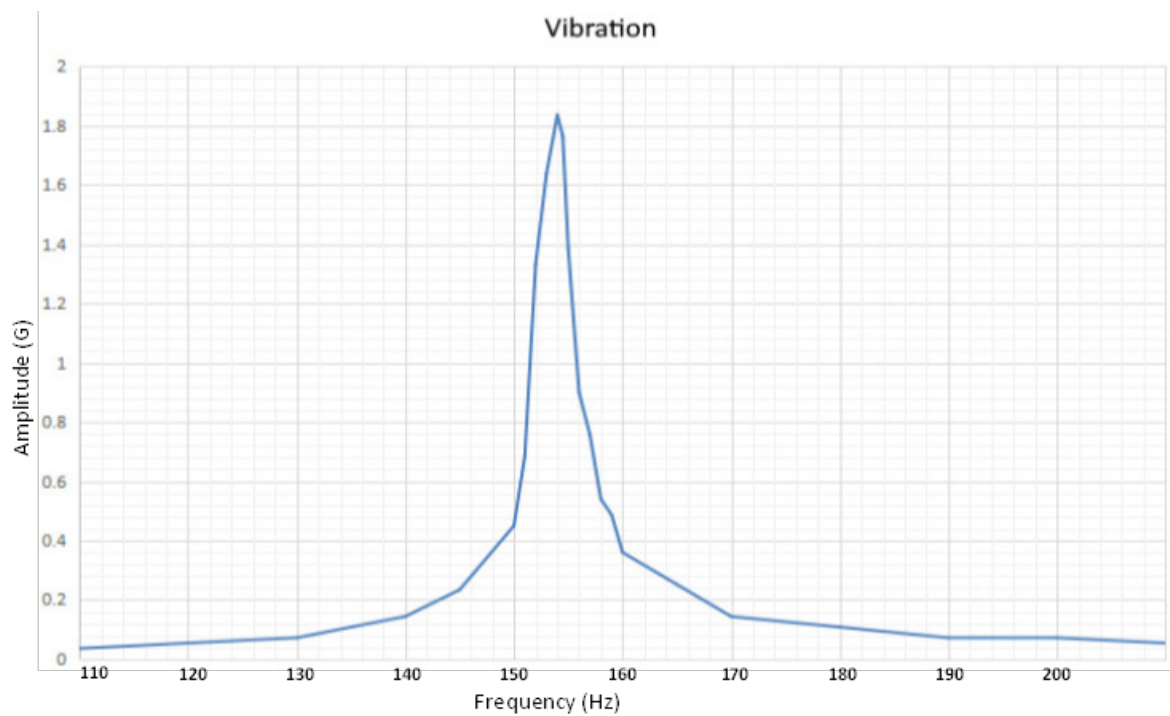
Fixture:

Weight: 100g

Material: AL

Dimension: 65mm x 75mm x 8mm



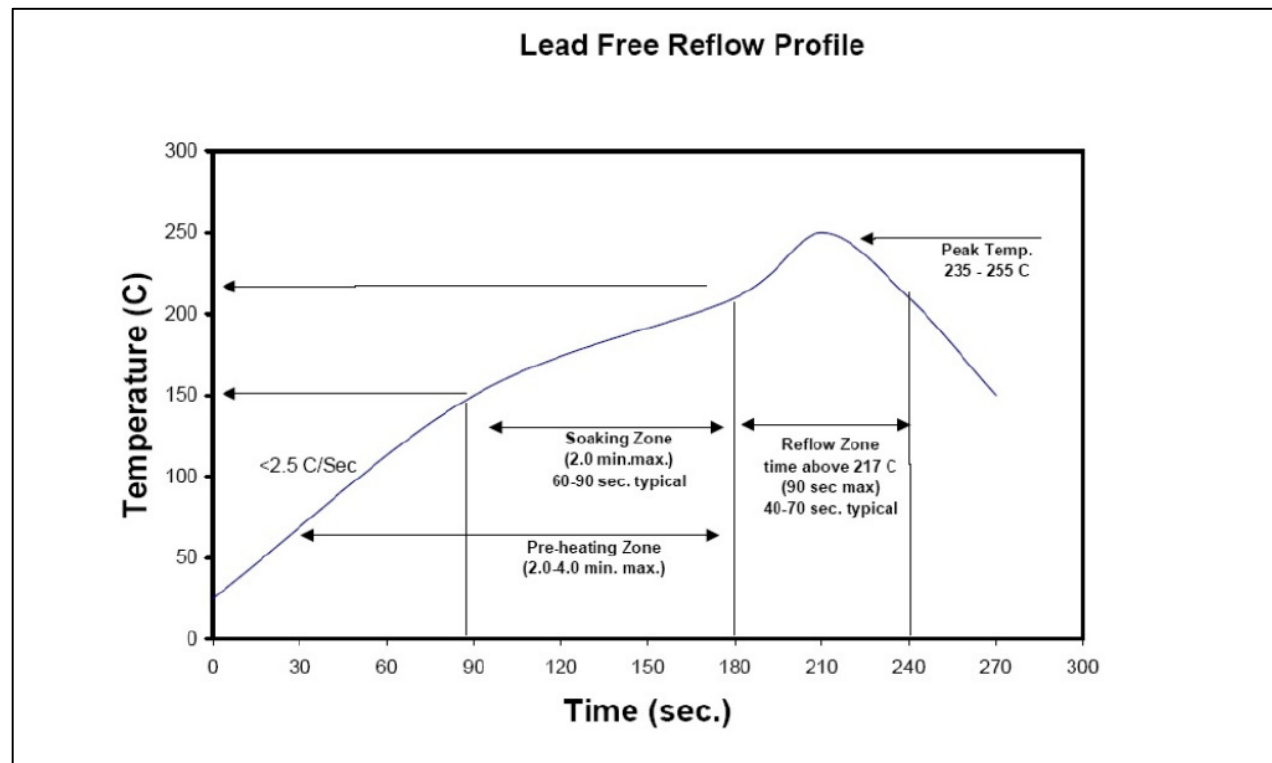


Reliability Testing

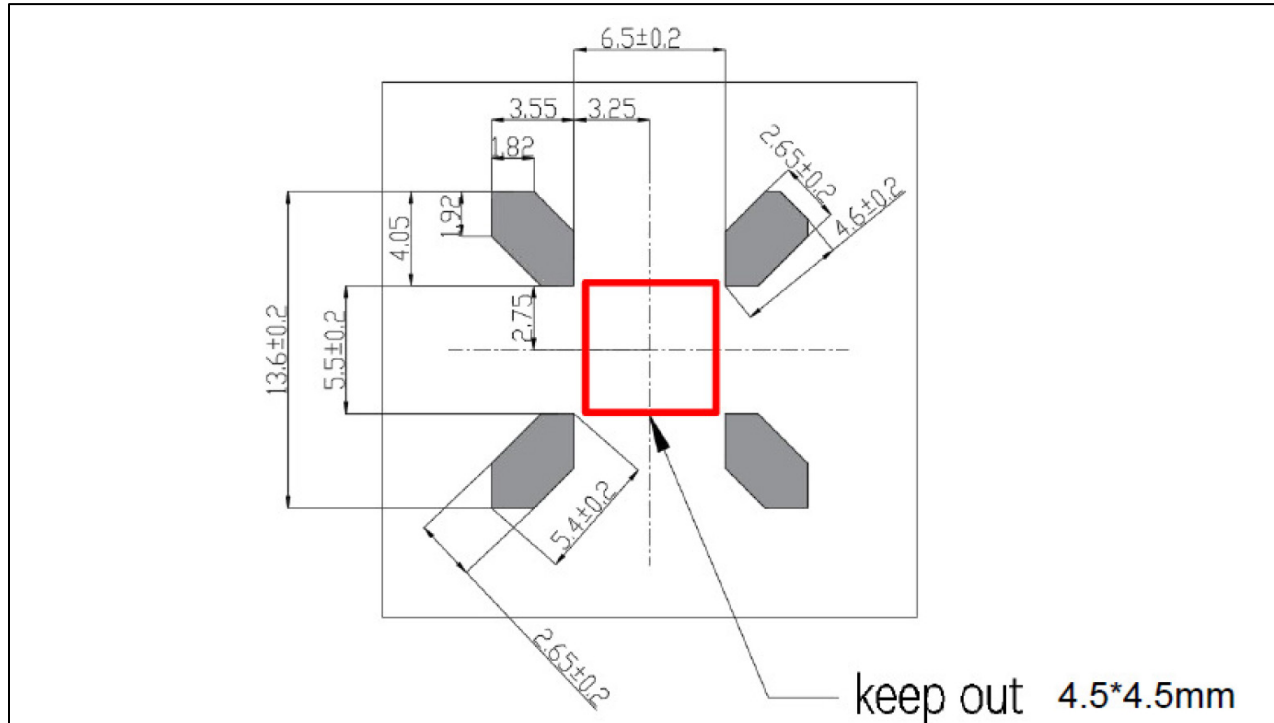
Type of Test	Test Specifications
High Temperature Storage Test	96 hours at 80°C
Low Temperature Storage Test	96 hours at -40°C
Salt Spray Test	NACL 15%, PH: 6.5~7.2, 24 hours exposure
Temperature Cycle Test	Temperature: -40°C ~ +80°C Duration: 30 Minutes Number Cycles: 15
Vibration Test	3mm deflection at 1000 cycles/min, 10 minutes per axis (X,Y,Z)
Drop Test	Weight: 100g mass including part Drop Height: 150cm Floor Material: Steel Drop in $\pm X$, $\pm Y$, $\pm Z$ directions, 3x each face (18 total)
Load Test	100,000 operating cycles at room temperature Condition: 2 seconds on, 1 second off

Acceleration, resistance, rated current, and noise must meet specifications after allowing device to rest for 4 hours after each test.

Recommended Reflow Profile



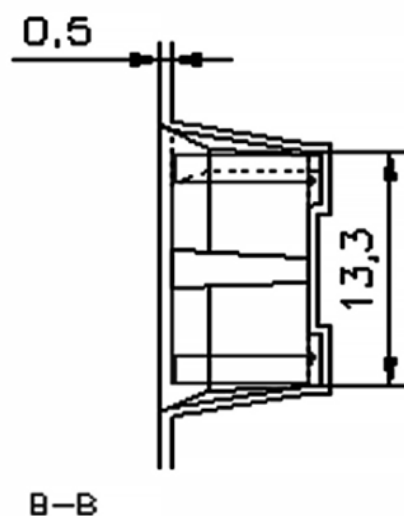
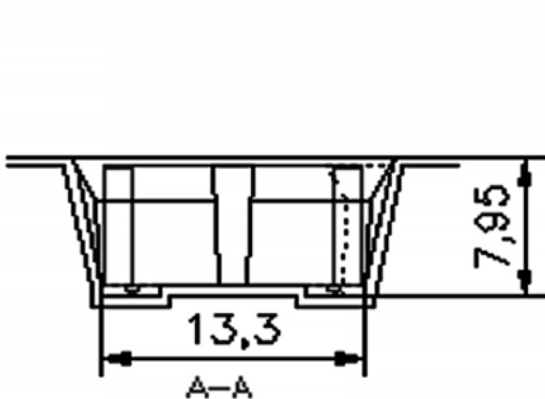
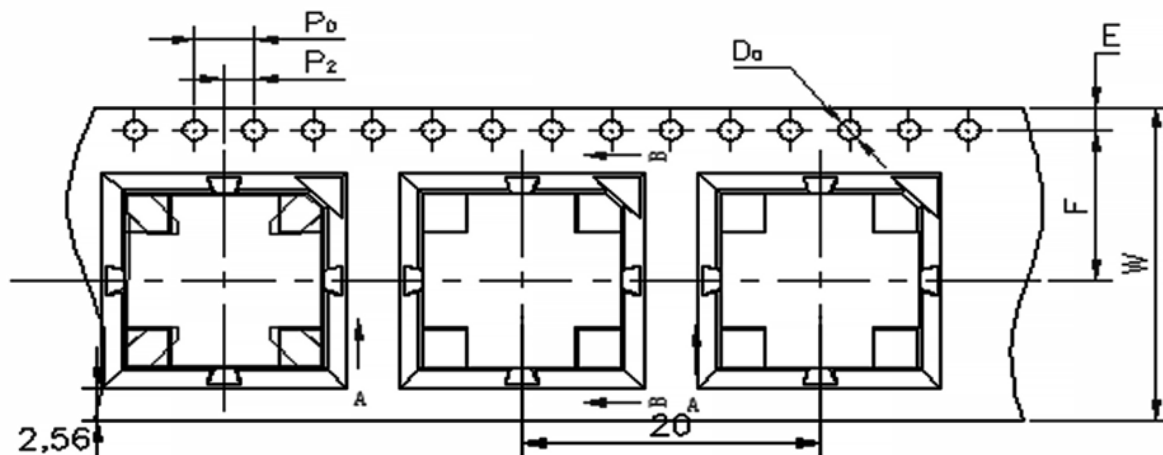
Suggested Land Pattern*



***This land pattern is advisory only and its use or adaptation is entirely voluntary.**

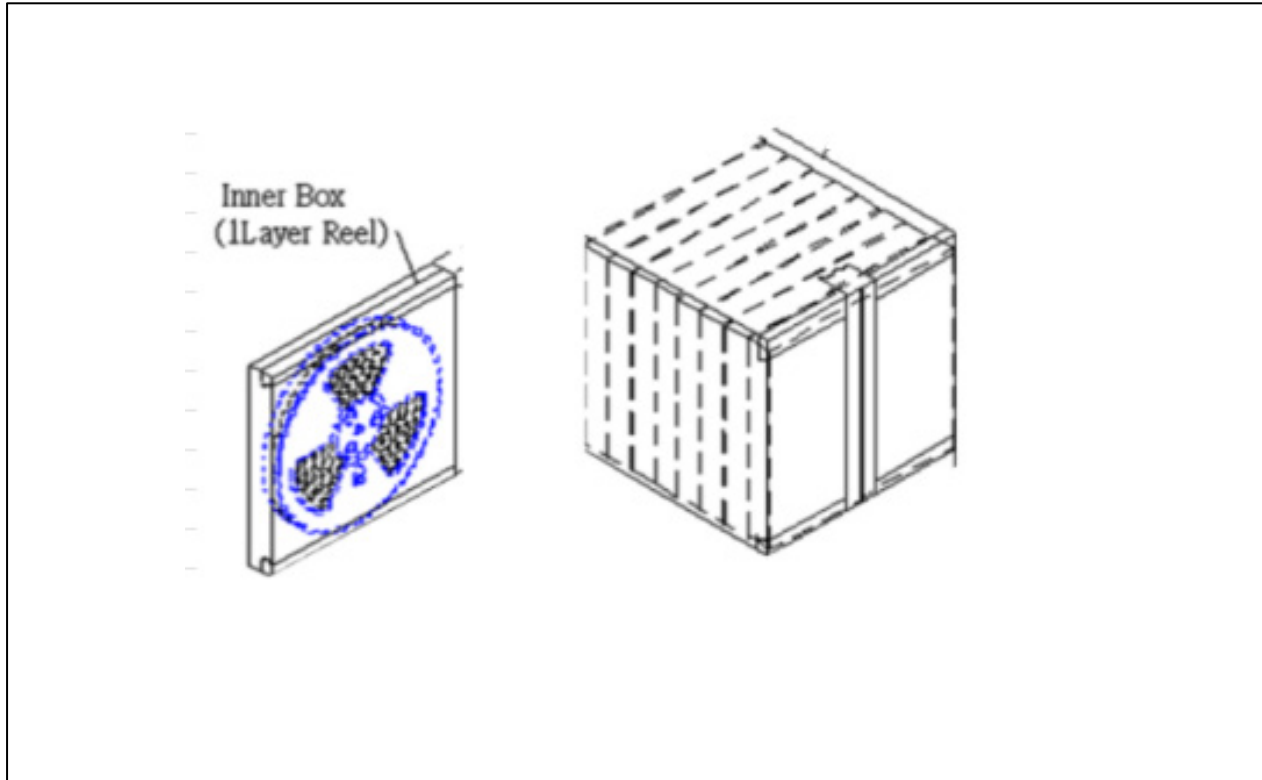
PUI Audio disclaims all liability of any kind associated with the use, application, or adaptation of this land pattern.

Tape & Reel Drawing



E	1.75 ± 0.10
F	11.50 ± 0.10
P2	2.00 ± 0.10
D₀	$1.50 \pm \begin{matrix} +0.10 \\ -0.00 \end{matrix}$
P₀	4.00 ± 0.10
10P₀	40.00 ± 0.20
W	24.00 ± 0.30
P	20.00 ± 0.10
A₀	13.30 ± 0.10
B₀	13.30 ± 0.10
K₀	7.95 ± 0.10
†	0.50 ± 0.05

Packaging



Pack	Quantity (pcs)	Dimension LxWxH (cm)
Reel	400	-
Box	400 * 21 = 8400	61.5 x 34.5 x 36.5

Specifications Revisions

Revision	Description	Date
A	RELEASED FROM ENGINEERING	12/6/23

Note:

- Unless otherwise specified:
 - All dimensions are in millimeters.
 - Default tolerances are $\pm 0.5\text{mm}$ and angles are $\pm 3^\circ$.ssw
- Specifications subject to change or withdrawal without notice.

Mouser Electronics

Authorized Distributor

Click to View Pricing, Inventory, Delivery & Lifecycle Information:

[PUI Audio:](#)

[HD-LA1307-SM](#)