



Data Sheet	HD-EMB1408-SC
------------	---------------

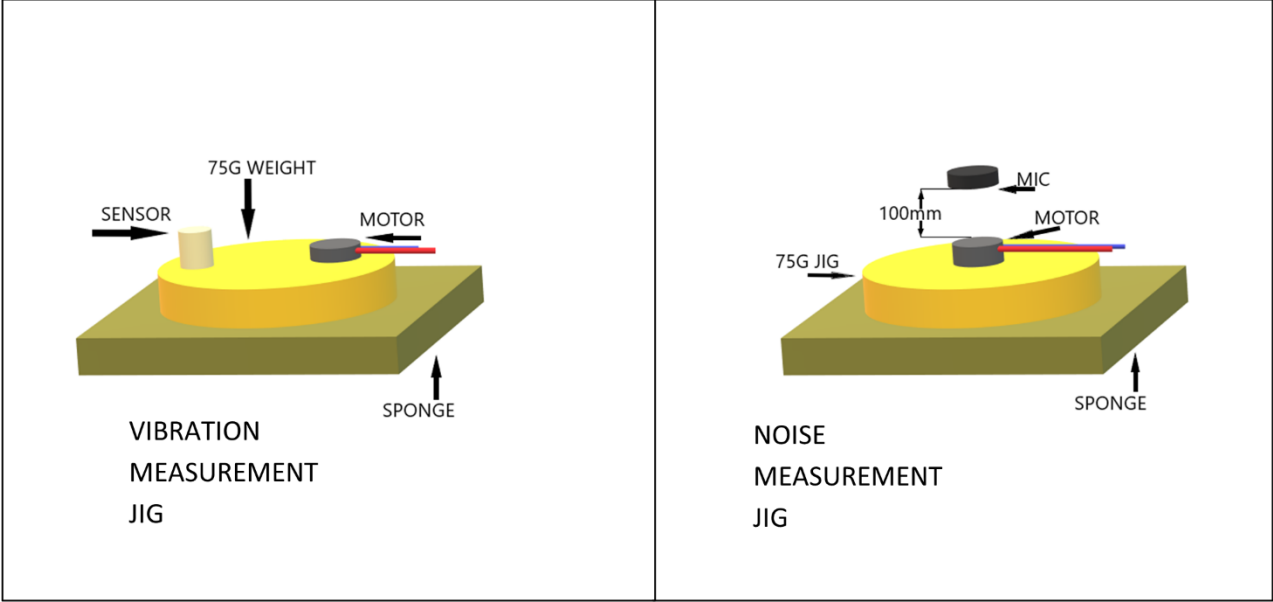
**Features:**

- 14.4mm x 8mm cylindrical design
- 105mA rated current
- 10,000 rpm rated speed
- Spring contacts for easy installation

**Specifications**

Parameters	Values	Units
Input Voltage (DC)	3	V <sub>DC</sub>
Starting Voltage (DC)	1.7	V <sub>DC</sub>
Operating Voltage Range (DC)	2.2 ~ 3.6	V <sub>DC</sub>
Direction of Rotation	CW/CCW	-
Rated Speed	10,000 ± 2,500	RPM
Rated Current (Max at 3.0 V <sub>DC</sub> )	70	mA
Starting Current (Max at 1.7 V <sub>DC</sub> )	105	mA
Terminal Resistance	30 ± 10%	Ohms
Shaft End Play (Max)	0.1 ~ 0.3	mm
Mechanical Noise (Max)	50	dBA
Environmental Compliances	RoHS/REACH	-
Weight	2.4	Grams
Storage Temperature	-10 ~ +60	°C
Operating Temperature	-10 ~ +60	°C

Measurement Methods

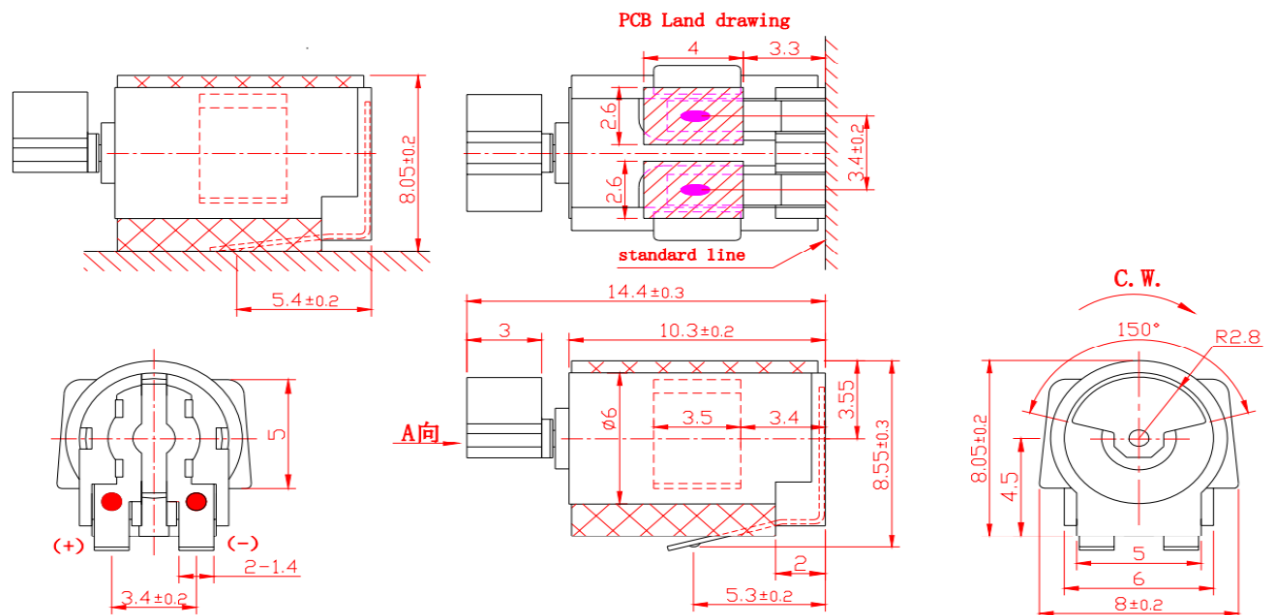


Reliability Testing

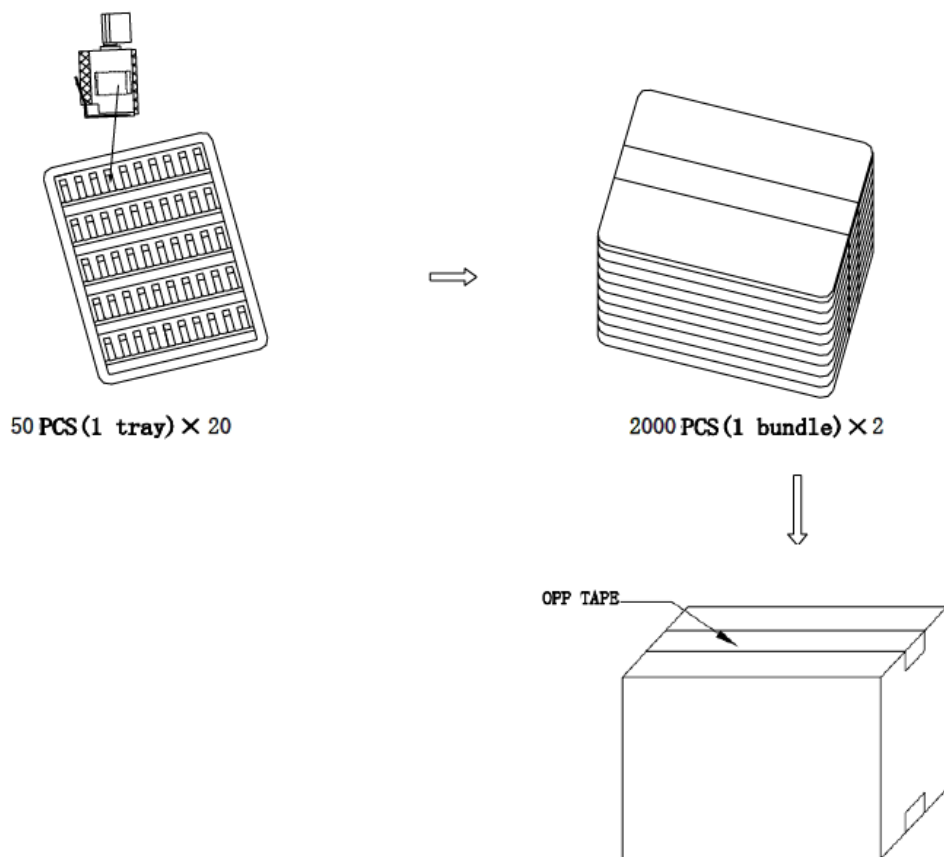
Type of Test	Test Specifications
High Temperature Test	Temperature: +60±2°C Test Duration Time: 96 hours
Low Temperature Test	Temperature: -40±2°C Test Duration Time: 96 hours
Humidity Test	Temperature: 40°C Relative Humidity: 90~95% Test Duration Time: 96 hours
Thermal Shock Test	Temperature Cycle: -30 to +70°C Cycle Time: 2 hours Test Repetition: 20 cycles (40 hours total)
Vibration Test	Vibration: 1.5mm, 10~55~10Hz Test Axis: XYZ Test Repetition: 20 minutes per axis (60 minutes total)
Drop Test	Drop Condition: 1.5m onto iron plate at weight 150g Test Repetition: 6 times per side (36 total)
Load Test	200,000 operating cycles at room temperature Test Cycle: 0.5 seconds on, 0.5 seconds off

**Rated current, speed, starting voltage, and mechanical noise must meet specifications after allowing the device to rest for 2 hours after test.**

## Dimensions



## Packaging



**Remarks:**  
4000PCS/CTN: 44\*22\*27.5cm

Specifications Revisions			
Revision	Description	Date	Approved
A	RELEASED FROM ENGINEERING	12/13/2024	JD

- Note:
- 1. Unless otherwise specified:
    - A. All dimensions are in millimeters.
    - B. Default tolerances are  $\pm 0.1\text{mm}$  and angles are  $\pm 3^\circ$ .
  - 2. Specifications subject to change or withdrawal without notice.

# Mouser Electronics

Authorized Distributor

Click to View Pricing, Inventory, Delivery & Lifecycle Information:

[PUI Audio:](#)

[HD-EMB1408-SC](#)