



PUIaudio



Data Sheet

AS05208PS

The **AS05208PS** is designed for applications that require robust low-frequency response and low THD in compact designs.

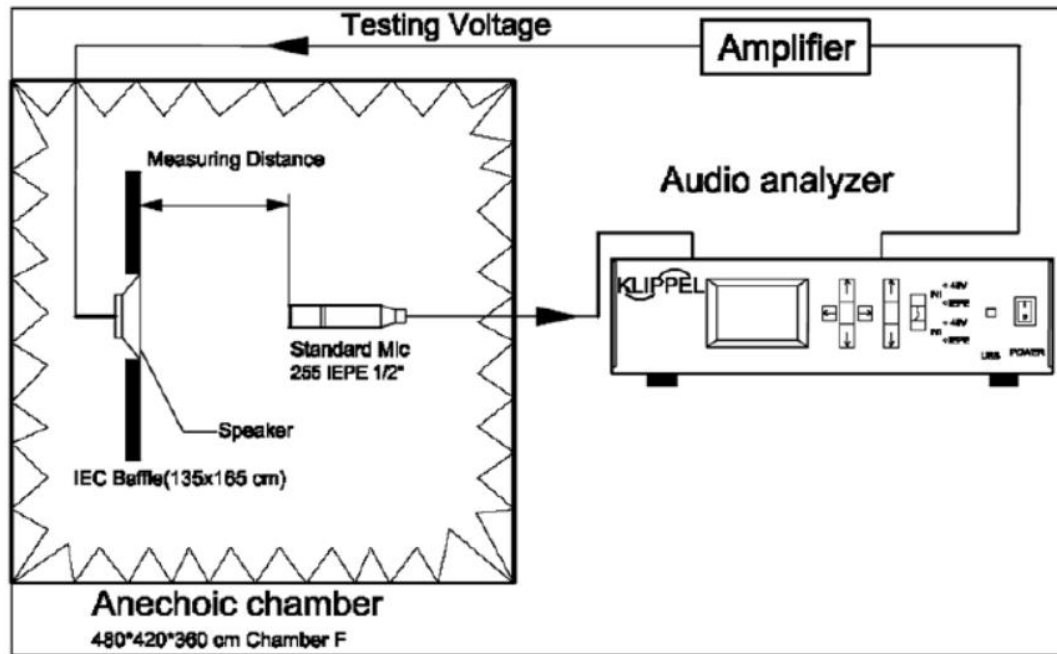
Features:

- 83dB SPL: 1W dissipation, distance = 0.5m
- 4.5W continuous dissipation
- 130Hz free-air resonance
- 51.5mm x 51.5mm x 30.3mm dimensions

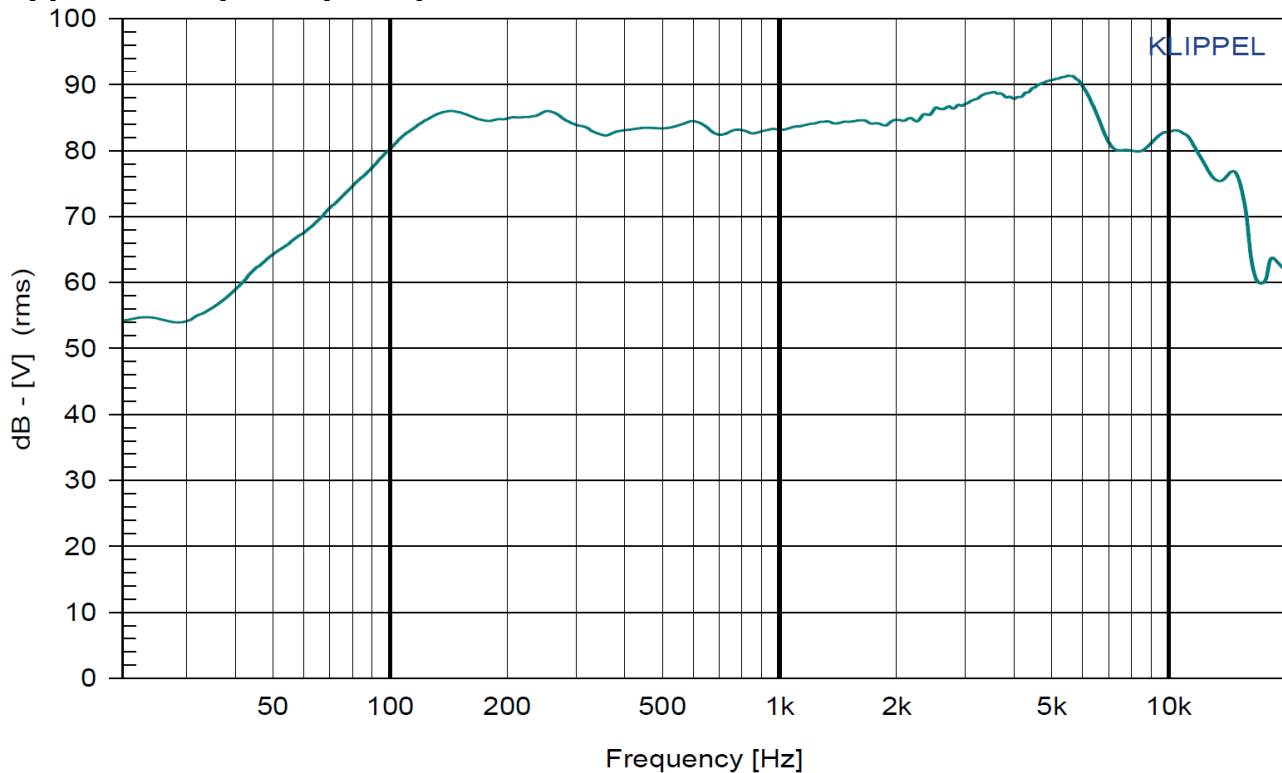
Specifications (Specifications measured with following conditions: ambient temperature; $15^{\circ}\text{C} \leq T_A \leq 35^{\circ}\text{C}$, relative humidity; $25\% \leq \text{RH}_A \leq 75\%$, according to standard GB/T9396-1996, unless otherwise stated. Judgement Condition: ambient temperature; $20 \pm 2^{\circ}\text{C}$; relative humidity; $63\% \leq \text{RH}_A \leq 67\%$. Product shelf life valid for 12 months.

Parameters	Values	Units
Rated Input Power	4.5	Watts
Max Input Power	5.0	Watts
Impedance	$8 \pm 15\%$	Ohms
Sensitivity $P_{\text{DRIVE}} = 1\text{W}$, distance = 0.5m $f = \text{ave. } 0.8\text{kHz}, 1.0\text{kHz}, 1.2\text{kHz}, 1.5\text{kHz}$	83 ± 3	dB
Resonant Frequency (f_0)	$130 \pm 20\%$	Hz
Frequency Range (-10dB SPL)	$f_0 \leq f \leq 15,000$	Hz
THD $f = 1\text{kHz}$, $P_{\text{DRIVE}} = 1.0\text{W}$	≤ 5	%
Frame Material	PBT + 15% GF	-
Magnet Material	NdFeB	-
Diaphragm Material	Paper + PU	-
Weight	25.8	gm
Buzz, Rattle, etc.	Not audible with $P_{\text{DRIVE}} = 4.5\text{W}$, sine wave	-
Polarity	Applying positive dc current to "+" terminal moves diaphragm forward	-
Storage Temperature	$-25 \leq T_s \leq 60$	$^{\circ}\text{C}$
Operating Temperature	$-25 \leq T_o \leq 50$	$^{\circ}\text{C}$
Environmental Compliances	ROHS/REACH	-

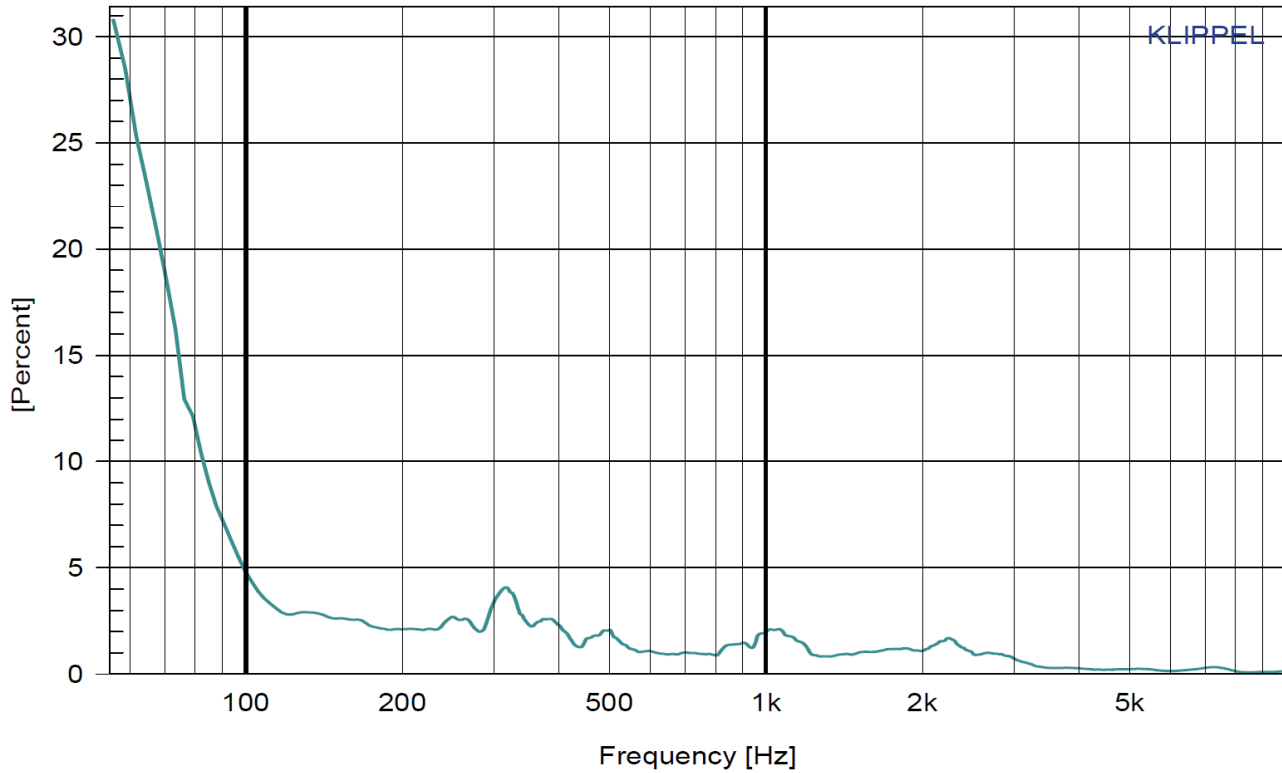
Measurement Method (Measured with $P_{\text{DRIVE}} = 1.0\text{W}$, distance = 0.5m, Temperature: 23 ~ 25°C, Relative Humidity: 55% (max).)



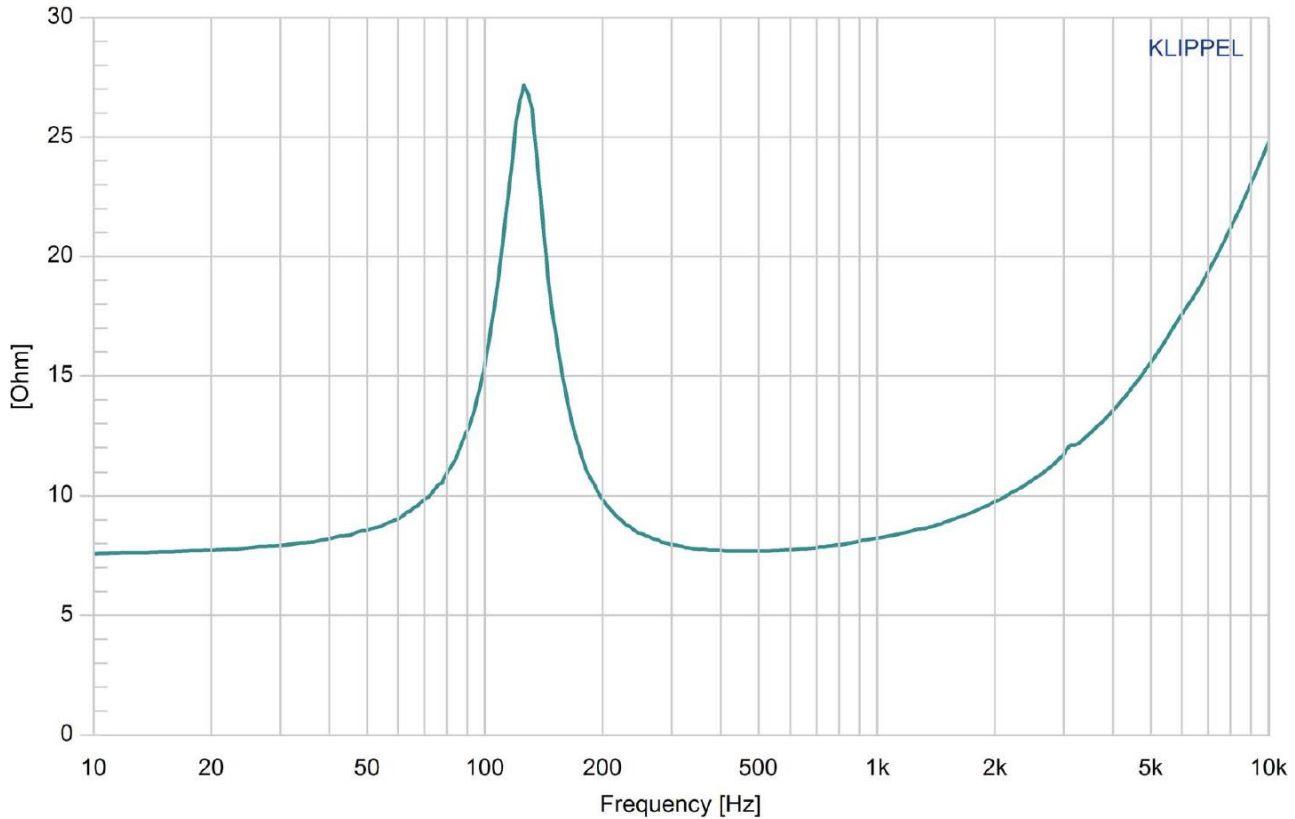
Typical Frequency Response ($P_{\text{DRIVE}} = 1.0\text{W}$, distance = 0.5m)



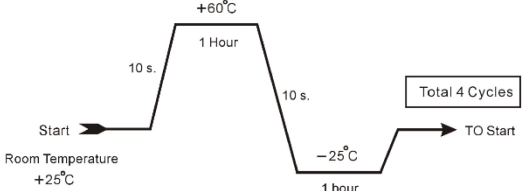
Typical THD vs. Frequency ($P_{\text{DRIVE}} = 1.0\text{W}$)



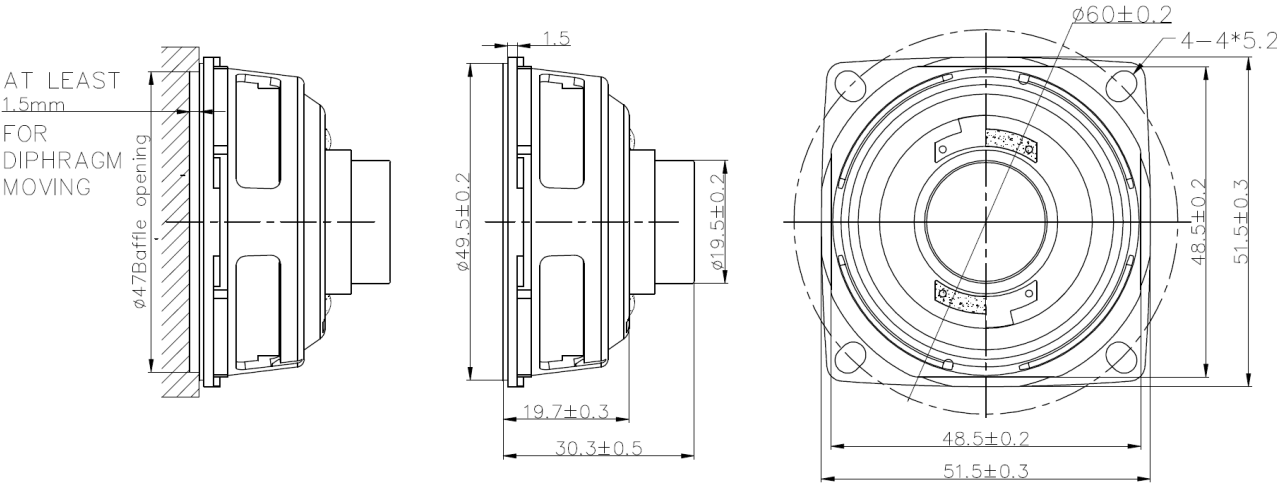
Typical Impedance Response



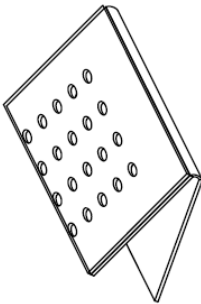
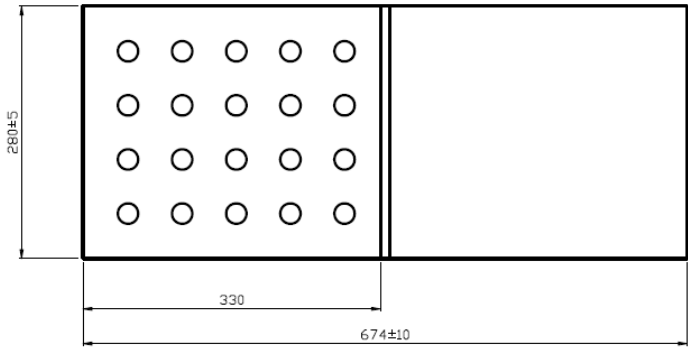
Reliability Testing

Type of Test	Test Specifications	Judgement
High Temperature Test GB2423.2-81	96 hours at +60°C ± 2°C followed by one hour in normal room temperature	SPL shall not deviate by ±3dB. Resonant frequency shall not deviate by ±50Hz. (compared with pre-test measurement)
Low Temperature Test GB2423.1-81	96 hours at -25°C ± 2°C followed by one hour in normal room temperature	
Humidity Test GB5170.18-87	96 hours at +40°C ± 2°C with relative humidity between 90% and 95% followed by 6 hours in normal room temperature	
Temperature Cycle Testing GB5170.18-87		SPL shall not deviate by ±4dB. Resonant frequency shall not deviate by ±80Hz. (compared with pre-test measurement)
Vibration Test GB11606.8-89	Frequency 30±15 Hz, Amplitude 1.5 mm for 3 Hours	SPL shall not deviate by ±3dB. (compared with pre-test measurement)
Drop Test GB2423.8-81	75 cm free falling on concrete floor, 10 times.	
Load Test GB/T12060.5-2011	Speaker should not fail after applying 20Hz ~ 20kHz pink noise with HPF rated power input (RMS), 96 hours.	

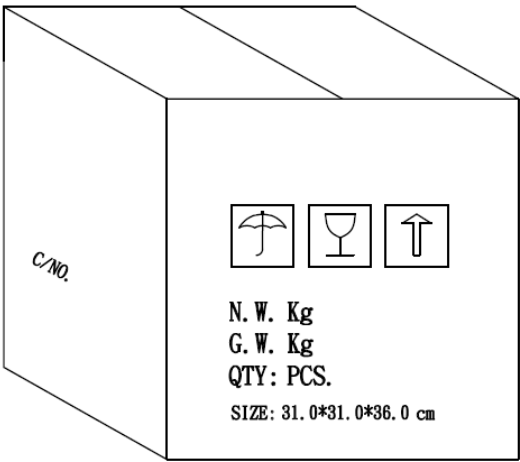
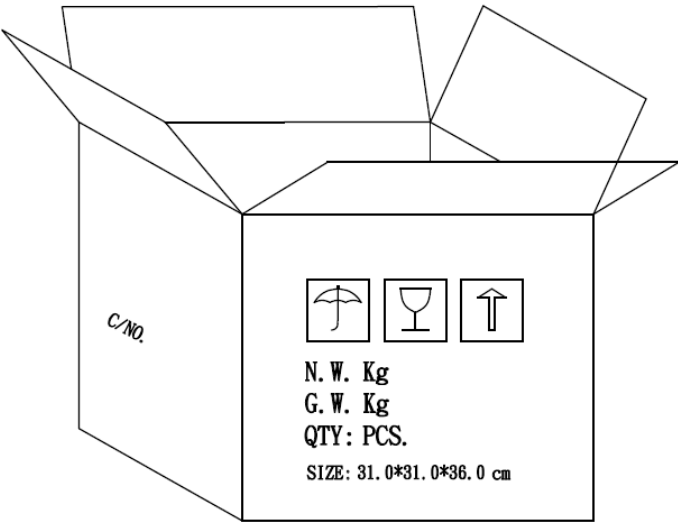
Dimensions (Tolerance: ±0.5mm, unless otherwise specified.)



Packaging



NOTE
16 PCS per Layer
Total 8 Layer per box
Total 128 PCS per box
31.0*31.0*36.0 cm
HF+ROHS 2



Measurement & Standard Reference

Abstract from GB/T 9396-1996 and IEC 268-5:1989: methods of measurement for main characteristics of loudspeakers.

5.1 Rated sine voltage.

A sinusoidal signal voltage specified by the manufacturer which makes the speaker work continuously in the rated frequency range, without causing electrical or mechanical damage to the speaker. The continuous voltage time is 1 hour.

5.2 Rated sine power.

The rated sine power corresponding with the rated sine voltage defined by: U_s^2/R , where U_s indicates the rated sin voltage and R indicates the rated impedance of the speaker.

5.3 Rated noise power.

The rated sine power corresponding with the rated sine voltage defined by: U_n^2/R , where U_n indicates the rated sin voltage and R indicates the rated impedance of the speaker.

Specifications Revisions			
Revision	Description	Date	Approved
A	Released from Engineering	03/25/2024	KH

Notes:

- 1. Unless otherwise specified:
 - A. All dimensions are in millimeters.
 - B. Default tolerances are ±0.5mm and angles are ±3°.
- 2. Specifications subject to change or withdrawal without notice.

Mouser Electronics

Authorized Distributor

Click to View Pricing, Inventory, Delivery & Lifecycle Information:

[PUI Audio:](#)

[AS05208PS](#)