

SPECIFICATIONS

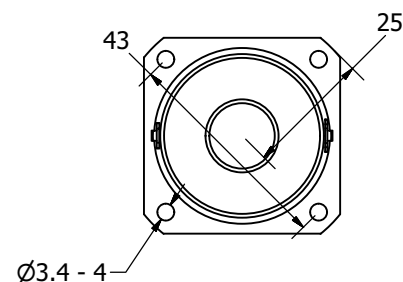
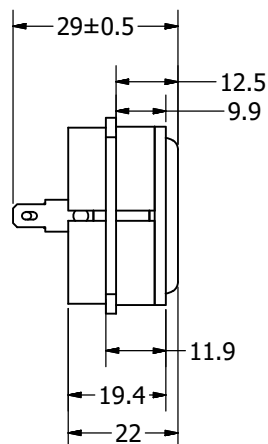
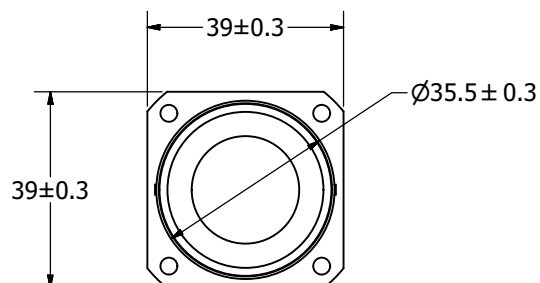
PARAMETERS	VALUES	UNITS
RATED INPUT POWER	5	W
MAX INPUT POWER	8	W
IMPEDANCE	8 ± 15%	OHM
OUTPUT SPL @ 1W/0.5M (AT 0.6, 0.8, 1.0, 1.2 kHz)	78 ± 3	dBA
DISTORTION (MAX. @ 1W/1 kHz)	5%	-
RESONANT FREQUENCY	250 ± 20%	Hz
FREQUENCY RANGE	130 ~ 20,000	Hz
HOUSING MATERIAL	ABS	-
CONE MATERIAL	ALUMINUM	-
MAGNET MATERIAL	NdFeB	-
OPERATING TEMPERATURE	-25 ~ +60	°C
WEIGHT	48.5	grams

THIS DOCUMENT CONTAINS DATA PROPRIETARY TO PROJECTS UNLIMITED, INC. ANY USE OR REPRODUCTION, IN ANY FORM, WITHOUT PRIOR WRITTEN PERMISSION OF PROJECTS UNLIMITED, INC. IS PROHIBITED.

©2003, Projects Unlimited Inc.

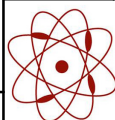
REVISION HISTORY

LTR	DESCRIPTION	DATE	APPROVED
-	RELEASED FROM ENGINEERING	2/19/16	



NOTES:

1. ALL DIMENSIONS ARE IN MILLIMETERS.
2. SPECIFICATIONS SUBJECT TO CHANGE OR WITHDRAWL WITHOUT NOTICE.
3. THIS PART IS RoHS 2011/65/EU COMPLIANT.

UNLESS OTHERWISE SPECIFIED: DIMENSIONS ARE IN MILLIMETERS, TOLERANCES ARE ±0.5 AND ANGLES ARE ±3°.	SIZE	Designed by	Date	Checked by	Date	Approved by	Date	Drawn Date
		M.V.	4/22/2016	M.V.	4/22/2016	B.R.	4/22/2016	4/22/2016
	A3	 pui audio a projects unlimited company			AS03908AS-R			
AS03908AS-R.idw		Speaker					Edition	Sheet
							-	1 / 1

AS03908AS-R.idw

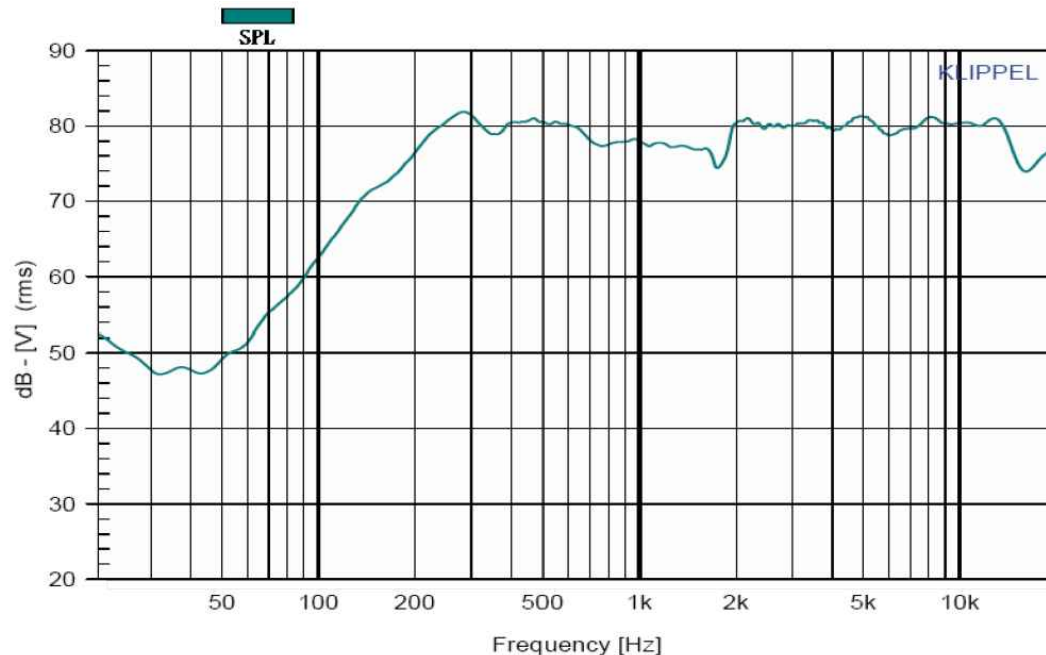
THIS DOCUMENT CONTAINS DATA PROPRIETARY TO PROJECTS UNLIMITED, INC. ANY USE OR REPRODUCTION, IN ANY FORM, WITHOUT PRIOR WRITTEN PERMISSION OF PROJECTS UNLIMITED, INC. IS PROHIBITED.
© 2005, Projects Unlimited Inc.

THIELE/SMALL PARAMETERS


PARAMETERS	VALUES
DC RESISTANCE (Re)	8 OHMS
INDUCTANCE (Le) @ 1kHz	0.27
MAXIMUM IMPEDANCE (Zm)	18 OHMS
MECHANICAL Q FACTOR (Qms)	2.77
ELECTRICAL Q FACTOR (Qes)	2.13
TOTAL Q FACTOR (Qts)	1.2
EQUIVALENT AIR VOLUME (Vas)	0.035 LITERS
VOICE COIL DIAMETER	20 mm
XMAX ((VOICE COIL HEIGHT - GAP)/2)	4.5 MM UNDERHUNG
XMECH (MAXIMUM EXCURSION BEFORE DAMAGE)	6 MM
RECOMMENDED SEALED ENCLOSURE VOLUME RANGE	0.05~1.5 LITERS
RECOMMENDED PORTED VOLUME AND TUNING FREQUENCY	0.5L, 100 Hz (-3 dB) 95 Hz



- Full range speaker designed using next-gen techniques for unsurpassed low distortion
- Completely open motor with mesh-covered rear vent for minimized reflections and improved heat dissipation
- Aluminum concave diaphragm and ported aluminum former
- High-energy neodymium magnet completely saturates the underhung voice coil for superior transient response
- Huge 20mm voice coil and dual surrounds for high power handling



REVISIONS			
LTR	DESCRIPTION	DATE	APPROVED
-	RELEASED FROM ENGINEERING	5/12/16	

<div>UNLESS OTHERWISE SPECIFIED: ALL PURCHASES ARE SUBJECT TO THE PUI AUDIO TERMS AND CONDITIONS SALE FOUND AT http://www.puiaudio.com/pdf/terms_conditions.pdf (paper copy available upon request).</div> <div>DIMENSIONS ARE IN MILLIMETERS, TOLERANCES ARE ±0.5 AND ANGLES ARE ±3°.</div>		<div><div><div>pui</div><div>audio</div><div>inc</div><div>a projects unlimited company</div></div></div>		<div>3541 Stop Eight Road Dayton, Ohio 45414</div>		
APPROVALS		DATE		SPEAKER		
DRAWN M. V.		5/16				
CHECKED M. V.		5/16				
APPROVED B.R.		5/16				
		SIZE	DRAWING NO.			
		A	AS03908A-R TS PARAMETERS			
		SCALE: N.T.S.		SHEET 1 OF 1		

Mouser Electronics

Authorized Distributor

Click to View Pricing, Inventory, Delivery & Lifecycle Information:

[PUI Audio:](#)

[AS03908AS-R](#)