

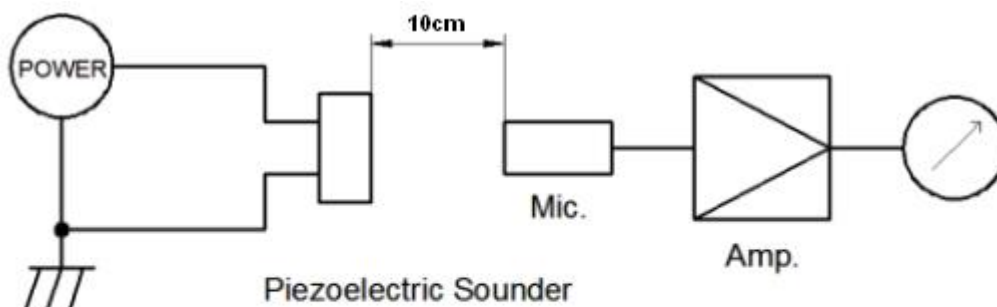
## Data Sheet

AI-2429-TWT-5V-R

### Indicator Specifications

Parameters	Values	Units
Rated Voltage	5	VDC
Operating Voltage Range	3~16	VDC
Current Draw at Rated Voltage	25	mA
Minimum SPL @ 10cm	98	dBA
Resonant Frequency	3000±500	Hz
Tone or Pulse Rate	Continuous	-
Housing Material	PBT	-
Terminal Material	Tin-Plated Copper	-
Acceptable Soldering Methods	Hand Solder, Wave Solder	See pages 2 and 3
Weight	5.4	Grams
Environmental Compliances	RoHS	-
Storage Temperature	-20 ~ +65	°C
Operating Temperature	-30 ~ +75	°C

### Measurement Method (Conditions: 20°C ±2°C, 40%~70% Relative Humidity, 860~1060 hPa Air Pressure)



MIC: ND10 Sound Meter or equivalent  
DC Power Supply: QJ6003S or equivalent

## Reliability Testing

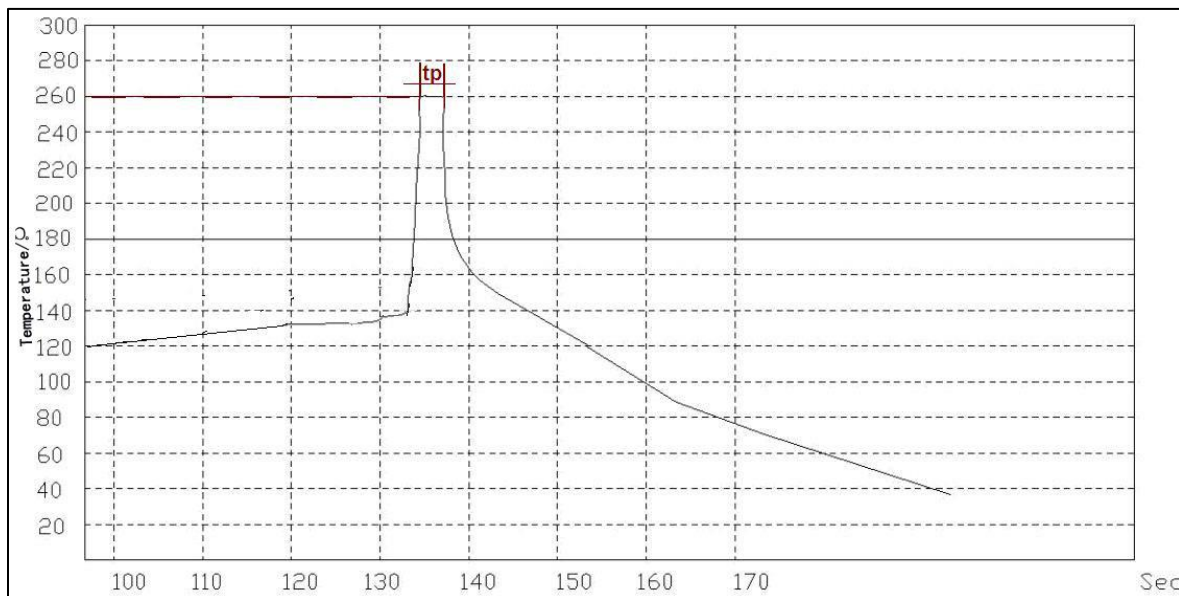
Type of Test	Test Specifications
High Temperature Test	96 hours at +75°C ± 2°C and allowed to rest for 2 to 4 hours.
Low Temperature Test	96 hours at -30°C ± 2°C and allowed to rest for 2 to 4 hours.
Humidity Test	96 hours at +40°C ± 2°C with relative humidity at 93% +2%/-3% and allowed to rest for 2 to 4 hours.
Temperature Cycle Testing	-30±2°C for 30minutes Room temp. for 15 minutes +75±2°C for 30 minutes Room temp. for 15 minutes 5 cycles
Vibration Test	Test for the directions of X Y and Z (total 0.5 hours). To-and-fro. sweep time (from 10 to 55 Hz and then 55 to 10) under single amplitude of 1 mm is 1 minute.
Drop Test	3 times from height of 70cm onto the surface of 10mm thick wooden board.
Solder Heat Resistance	The part leads (pins) shall be immersed in molten solder maintained at 260±5°C for 10seconds. Refer to GB/T 2423.28.

**After the test part shall meet specifications, except the SPL shall be in ±10dB.**

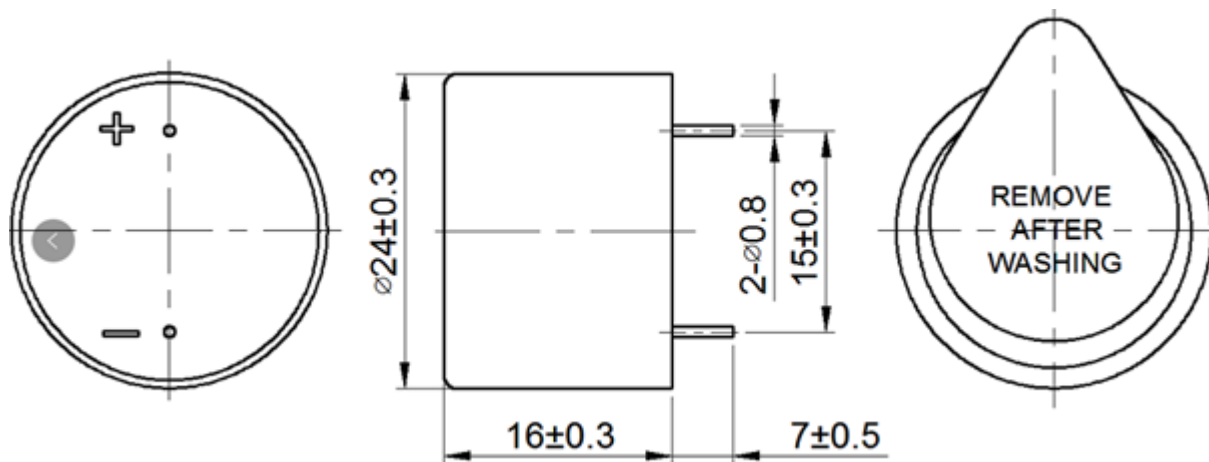
## Soldering Method:

No.	Item	Test condition
1	Hand soldering	Solder Temp.:350±10°C; Time: Max. 3 seconds.
2	Wave Soldering	Preheat 1 : 120°C Preheat 2 : 130°C Preheat 3 : 140°C  Tin oven Temp (Tp)/ Time: 260±5 °C/3s  Transit speed : 1200mm/min

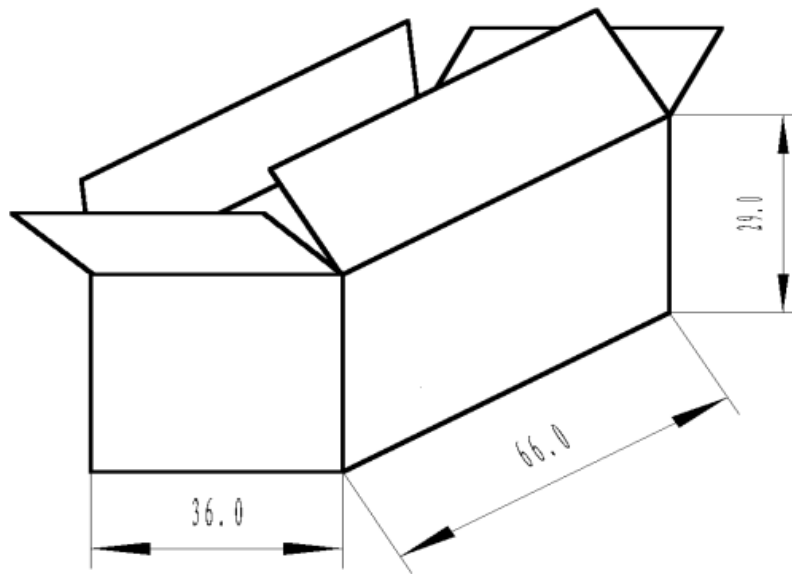
## Recommended Wave Solder Profile



## Dimensions (Positive pin is the top pin in the drawing below)



## Packaging



### NOTES:

1. 50 PCS per box
2. Total 40 boxes per carton
3. Total 2000 PCS a carton
4. Volume:  $66 \times 36 \times 29 \text{ cm}$

**Specifications Revisions**

<b>Revision</b>	<b>Description</b>	<b>Date</b>
-	Released from Engineering	3/21/2019

**Note:**

1. Unless otherwise specified:
  - A. All dimensions are in millimeters.
  - B. Default tolerances are  $\pm 0.5\text{mm}$  and angles are  $\pm 3^\circ$ .
2. Specifications subject to change or withdrawal without notice.

# Mouser Electronics

Authorized Distributor

Click to View Pricing, Inventory, Delivery & Lifecycle Information:

[PUI Audio:](#)

[AI-2429-TWT-5V-R](#)