

Device connector, rear mounting - RC-07P1NC24100 - 1594508

Please be informed that the data shown in this PDF Document is generated from our Online Catalog. Please find the complete data in the user's documentation. Our General Terms of Use for Downloads are valid (<http://phoenixcontact.com/download>)




Device connector for rear wall, straight, Screw locking, M23, No. of pos.: 7, type of contact: Pin, Solder-in connection, Flat gasket, 4xM3, Panel thickness min.: 2.7 mm, Panel thickness max.: 3.5 mm

The figure shows the 12-pos.
product version

RoHS

Key Commercial Data

Packing unit	20 pc
GTIN	 4 046356 879330
GTIN	4046356879330

Technical data

Data of the insulating body

Coding	N
Insertion/withdrawal cycles mechanical	100
Contact connection method	Solder-in connection
Type of contacts	Pin
Application	Signal
Number of positions	7
Contact diameter of power contacts	2 mm
Nominal current per power contact at 25°C	20 A
Nominal voltage, power contact	300 V
Rated surge voltage	2.5 kV
Overvoltage category	II
Degree of pollution	3
Overvoltage category	II
Degree of pollution	3

Housing data

Housing material	Metal
------------------	-------

Device connector, rear mounting - RC-07P1NC24100 - 1594508

Technical data

Housing data

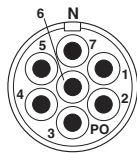
Type of locking	Screw locking
Degree of protection (when plugged in)	IP67
Thread type	M23

Environmental Product Compliance

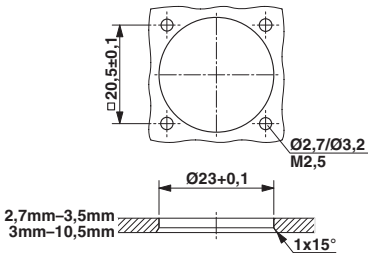
REACH SVHC	Lead 7439-92-1
China RoHS	Environmentally Friendly Use Period = 50
	For details about hazardous substances go to tab "Downloads", Category "Manufacturer's declaration"

Drawings

Schematic diagram



Dimensional drawing



Installation dimensions

Approvals

Approvals

Approvals

EAC

Ex Approvals

Approval details

EAC		B.01742
-----	--	---------

Phoenix Contact 2018 © - all rights reserved
<http://www.phoenixcontact.com>

PHOENIX CONTACT GmbH & Co. KG
Flachsmarktstr. 8
32825 Blomberg
Germany
Tel. +49 5235 300
Fax +49 5235 3 41200
<http://www.phoenixcontact.com>

Mouser Electronics

Authorized Distributor

Click to View Pricing, Inventory, Delivery & Lifecycle Information:

Phoenix Contact:

1594508