

## Device connector, rear mounting - RC-06P1NA24200 - 1593536

Please be informed that the data shown in this PDF Document is generated from our Online Catalog. Please find the complete data in the user's documentation. Our General Terms of Use for Downloads are valid (<http://phoenixcontact.com/download>)




Device connector for rear wall, straight, shielded: yes, Screw locking, M23, No. of pos.: 6, type of contact: Pin, Solder-in connection, Radial O-ring, 4x M2.5, Panel thickness min.: 2.7 mm, Panel thickness max.: 3.5 mm

The figure shows the 12-pos. product version

**RoHS**

### Key Commercial Data

Packing unit	20 pc
GTIN	 4 046356 196741
GTIN	4046356196741

### Technical data

#### Data of the insulating body

Coding	N
Insertion/withdrawal cycles mechanical	50
Contact connection method	Solder-in connection
Type of contacts	Pin
Application	Signal
Number of positions	6
Contact diameter of power contacts	2 mm
Nominal current per power contact at 25°C	20 A
Nominal voltage, power contact	300 V
Rated surge voltage	2.5 kV
Overvoltage category	II
Degree of pollution	3
Overvoltage category	II
Degree of pollution	3

#### Housing data

Housing material	Metal
------------------	-------

# Device connector, rear mounting - RC-06P1NA24200 - 1593536

## Technical data

### Housing data

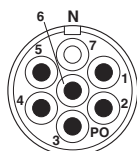
Type of locking	Screw locking
Degree of protection (when plugged in)	IP67
Thread type	M23

### Environmental Product Compliance

China RoHS	Environmentally Friendly Use Period = 50
	For details about hazardous substances go to tab "Downloads", Category "Manufacturer's declaration"

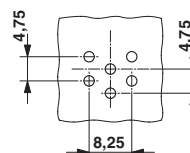
## Drawings

Schematic diagram

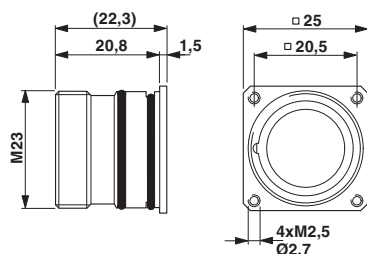


6-pos.

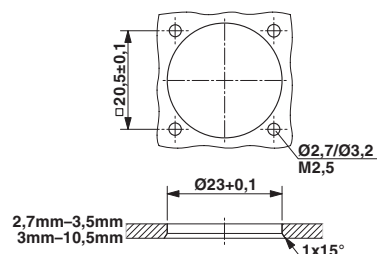
Drilling diagram



Dimensional drawing



Dimensional drawing



# Mouser Electronics

Authorized Distributor

Click to View Pricing, Inventory, Delivery & Lifecycle Information:

Phoenix Contact:

1593536