

## Device connector, rear mounting - RC-06P1N224200 - 1593398

Please be informed that the data shown in this PDF Document is generated from our Online Catalog. Please find the complete data in the user's documentation. Our General Terms of Use for Downloads are valid (<http://phoenixcontact.com/download>)




Device connector for rear wall, straight, shielded: yes, Screw locking, M23, No. of pos.: 6, type of contact: Pin, Solder-in connection, Radial O-ring, 4x M2.5, Panel thickness min.: 2.7 mm, Panel thickness max.: 3.5 mm

The figure shows the 12-pos. product version



### Key Commercial Data

Packing unit	40 pc
GTIN	 4 046356 195973
GTIN	4046356195973

### Technical data

#### Data of the insulating body

Coding	N
Insertion/withdrawal cycles mechanical	50
Contact connection method	Solder-in connection
Type of contacts	Pin
Application	Signal
Number of positions	6
Nominal current per power contact at 25°C	20 A
Nominal voltage, power contact	300 V
Rated surge voltage	2.5 kV
Overvoltage category	II
Degree of pollution	3
Overvoltage category	II
Degree of pollution	3

#### Housing data

Housing material	Metal
Type of locking	Screw locking

## Device connector, rear mounting - RC-06P1N224200 - 1593398

### Technical data

#### Housing data

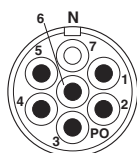
Degree of protection (when plugged in)	IP67
Thread type	M23

#### Environmental Product Compliance

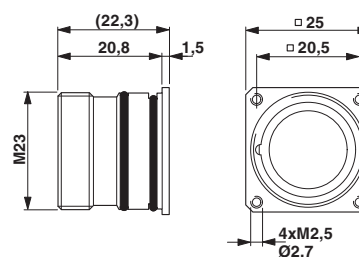
China RoHS	Environmentally Friendly Use Period = 50
	For details about hazardous substances go to tab "Downloads", Category "Manufacturer's declaration"

### Drawings

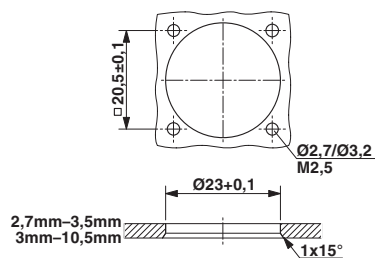
Schematic diagram



Dimensional drawing



Dimensional drawing



Phoenix Contact 2018 © - all rights reserved  
<http://www.phoenixcontact.com>

PHOENIX CONTACT GmbH & Co. KG  
Flachsmarktstr. 8  
32825 Blomberg  
Germany  
Tel. +49 5235 300  
Fax +49 5235 3 41200  
<http://www.phoenixcontact.com>

# Mouser Electronics

Authorized Distributor

Click to View Pricing, Inventory, Delivery & Lifecycle Information:

Phoenix Contact:

1593398